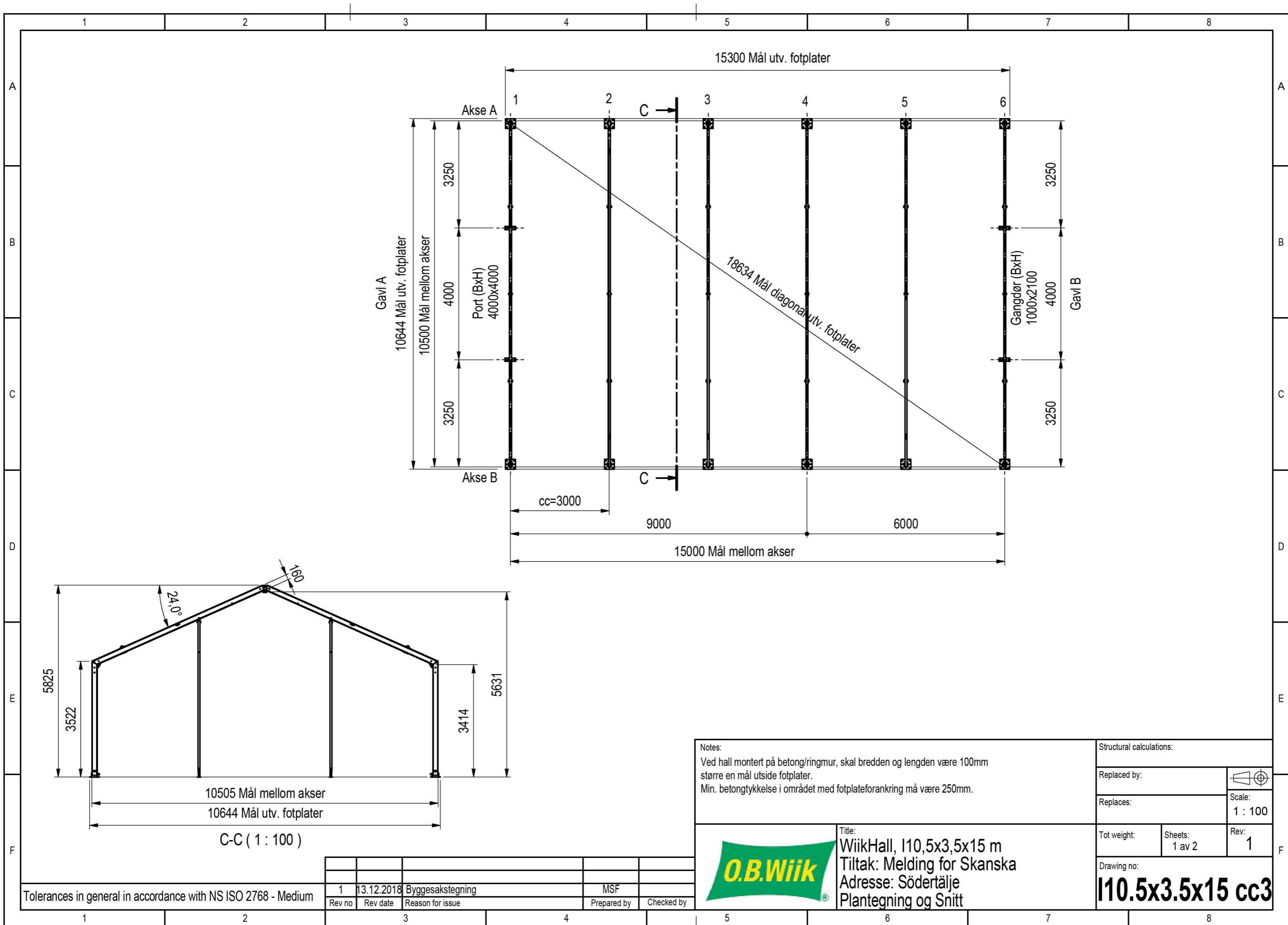


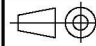
The drawing shall not be copied,
be giving third party without
O.B.Wiik's consent.



Notes:

Ved hall montert på betong/ringmur, skal bredden og lengden være 100mm større en mål utside fotplater.
Min. betongtykkelse i området med fotplateforankring må være 250mm.

Structural calculations:

Replaced by:	
Replaces:	
Scale:	1 : 100
Tot weight:	Sheets: 1 av 2
Rev:	1



Title:
WiikHall, I10,5x3,5x15 m
Tiltak: Melding for Skanska
Adresse: Södertälje
Plantegning og Snitt

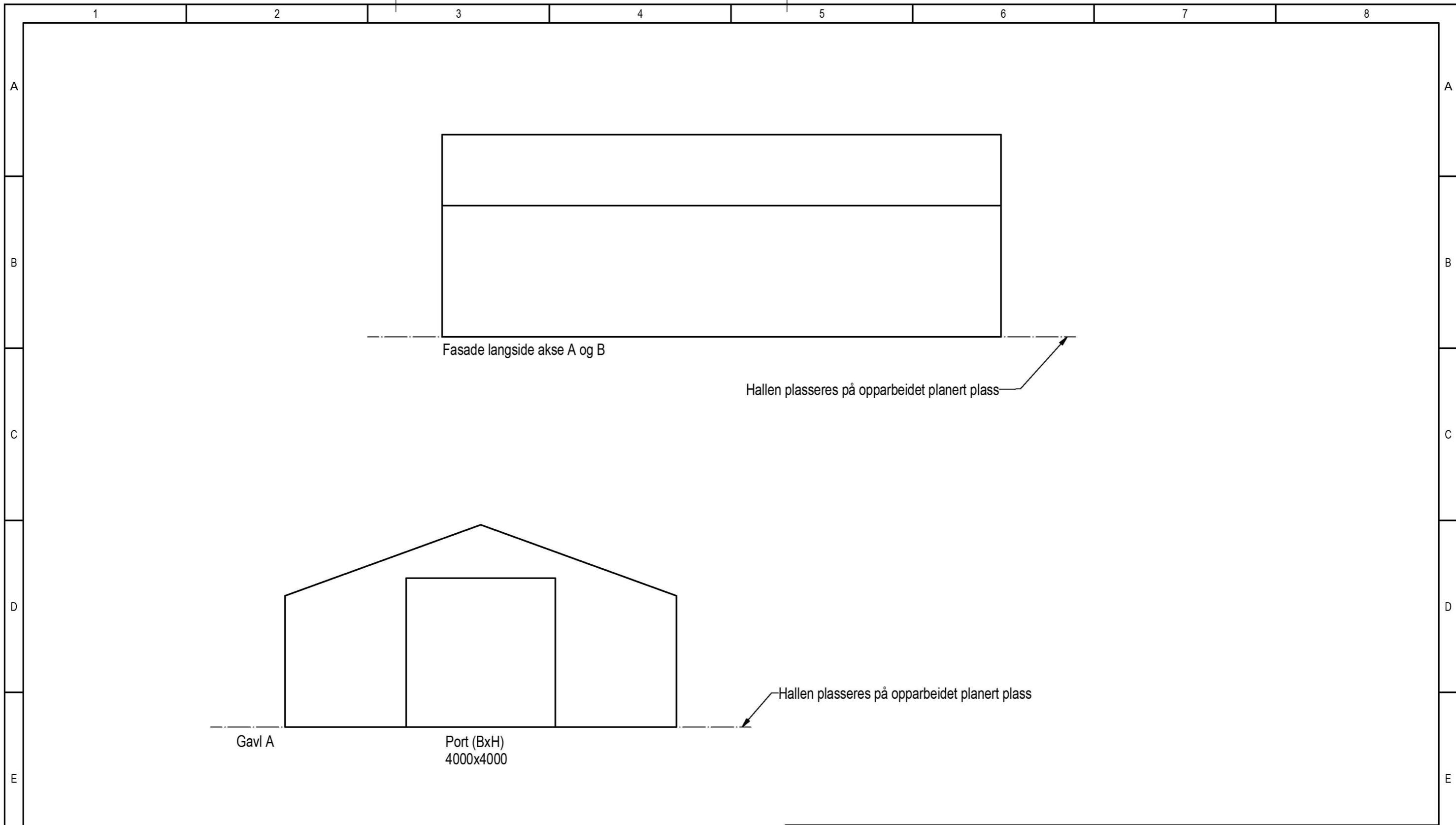
Drawing no:

I10.5x3.5x15 cc3

Tolerances in general in accordance with NS ISO 2768 - Medium

Rev no	Rev date	Reason for issue	Prepared by	Checked by
1	13.12.2018	Byggesakstegning	MSF	

The drawing shall not be copied,
be giving third party without
O.B.Wiik's consent.



Tolerances in general in accordance with NS ISO 2768 - Medium

Rev no	Rev date	Reason for issue	Prepared by	Checked by
1	13.12.2018	Byggesakstegning	MSF	

Notes:		Structural calculations:	
		Replaced by:	
		Replaces:	Scale: 1 : 100
		Tot weight:	Rev: 1
		Sheets: 2 av 2	
		Drawing no: 110.5x3.5x15 cc3	



Title:
WiikHall, I10,5x3,5x15 m
Tiltak: Melding for Skanska
Adresse: Södertälje
Fasadtegning