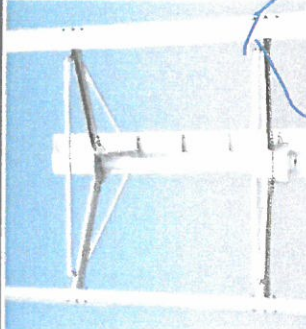
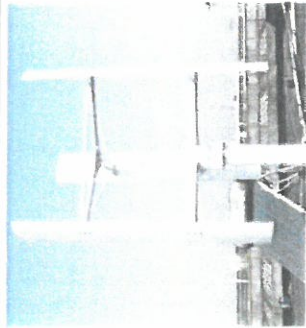


145/1



Item	SH-2K	SH-3K	SH-5K
Rated Power	2000W	3000W	5000W
Max Power	2100W	3200W	5300W
Rated Voltage(AC)	48V-96V	48V-220V	96V-380V
Started Wind Speed	3m/s	3m/s	3m/s
Cut-in Wind Speed	4m/s	4m/s	4m/s
Rated Wind Speed	11m/s	11m/s	11m/s
Rotor Diameter of Blades	1.4m	1.8m	2m
Blades Height	2.0m	2.8m	3.2m
Quantity of blades	3	3	3
Blades Colors	White/Multicolor		
Safe Wind Speed	≤55m/s		
Blade Material	Aviation Aluminum Alloy		
With inner blade	NO		
Generator	Three phase permanent magnet suspension motor		
Control System	Electromagnet		
Mount Height	6~20m (12m)		
Generator Protection Grade	IP54		
Work Environment Temperature	-25~+45°C		
Work Environment Humidity	≤90%		
Altitude	≤4500m		
Overspeed Protection	Electromagnetic brake		
Overload Protection	Electromagnetic Brake And The Unloading Unit		

Støy. Meter pr sekund.

	A	B	C	D	E	F	G	H	I	J
1	Wind Speed(m/s)	3	4	5	6	7	8	9	10	11
2	Sound(dB)	1.25	2.8	5.4	8.2	11.5	20.43	26.53	30.24	34.24
3	Wind Speed(m/s)	12	13	14	15	16	17	18	19	20
4	Sound(dB)	38.54	39.78	40.2	43.54	45.24	46.32	46.45	46.67	46.89

