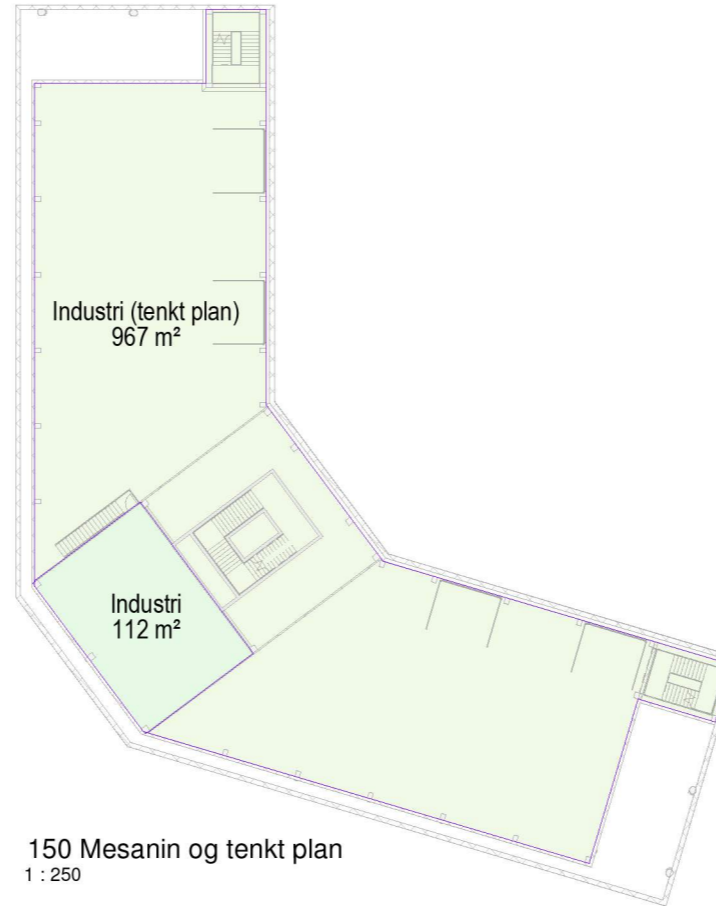
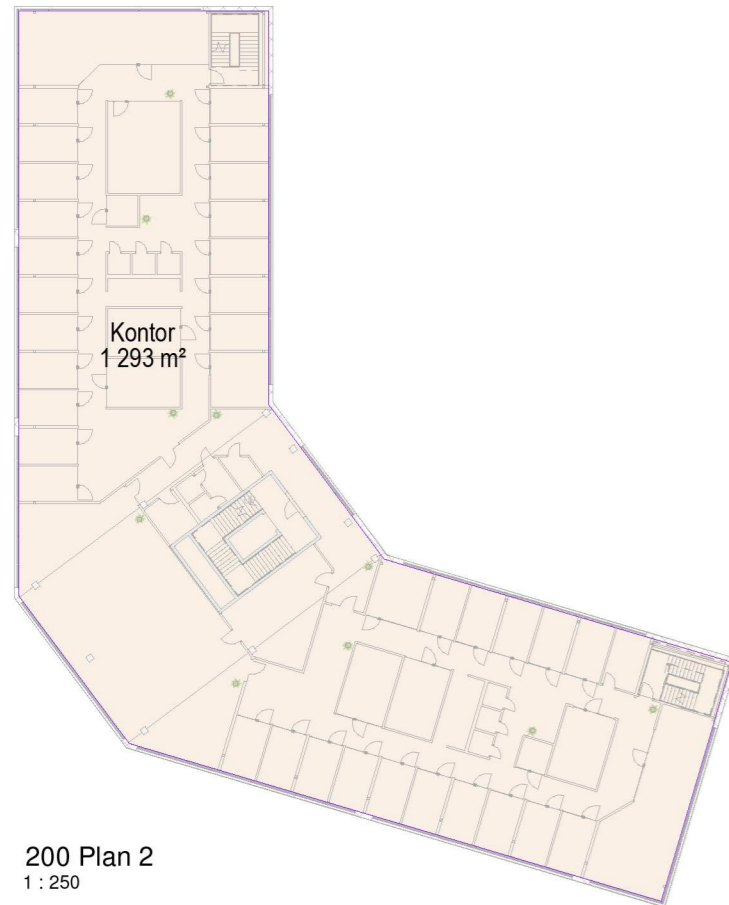


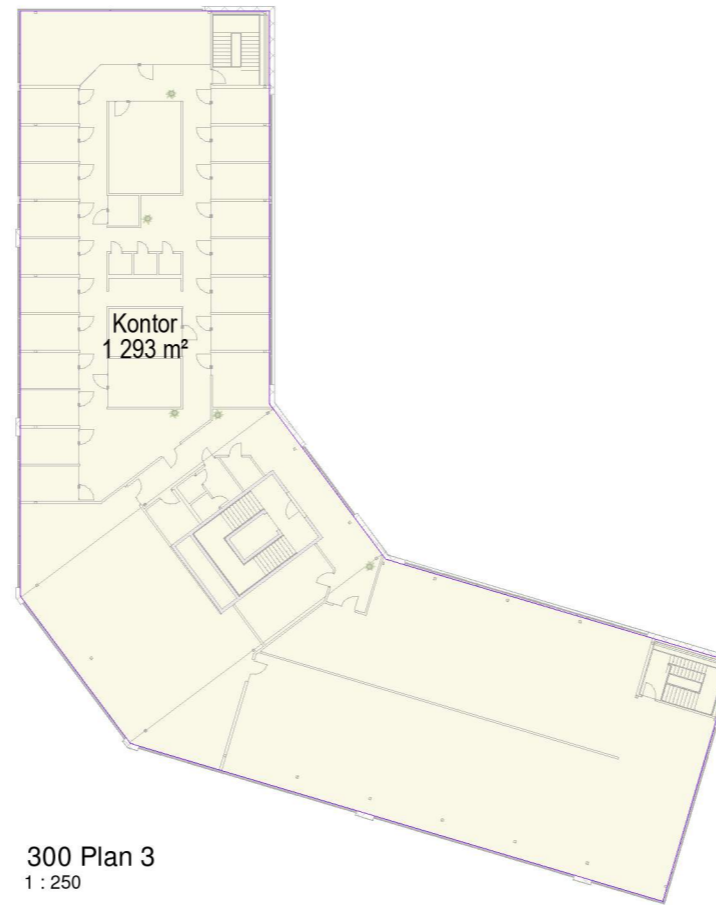
100 Plan 1  
1 : 250



150 Mesanin og tenkt plan  
1 : 250



200 Plan 2  
1 : 250



300 Plan 3  
1 : 250

19 Bruksareal (BRA)	
Navn	Areal
100 Plan 1	
Industri	1 185 m <sup>2</sup>
150 Mesanin	
Industri	112 m <sup>2</sup>
	1 297 m <sup>2</sup>
150 Mesanin	
Industri (tenkt plan)	967 m <sup>2</sup>
	967 m <sup>2</sup>
200 Plan 2	
Kontor	1 293 m <sup>2</sup>
300 Plan 3	
Kontor	1 293 m <sup>2</sup>
	2 585 m <sup>2</sup>
SUM BRA:	4 849 m <sup>2</sup>

### Kontorbygg

Austrheim Kommune Gnr/brnr: 130/93  
Littåsvegen 208  
5954 MONGSTAD

Oppdragsgiver  
Mongstadkrysset AS

**HTB** HELGESEN TEKNISKE BYGG AS  
5281 Valestrandfossen  
T: 56 19 34 00 www.htb.no

Prosjektnr. 5473, Dato 12.10.2022, Fase: Forprosjekt

### Arealoversikt BRA

Tegningsnummer **A-140**, Målestokk: 1 : 250 / A1, Tegn. SK