

XS MIKROHUS

SAUNDERS
ARCHITECTURE

5 JUNE 2023

GNR/BNR 169/190, FEDJE

BYGGEMELDINGSTEGNINGER



02	Innhold	
03	Eksteriør bilder	
04	Interiør bilder	
05	Kort beskrivelse	
06	Situasjonskart	1:500
07	Situasjonsplan	1:200
08	Plan & snitt	1:100
09	Fasader	1:100
10	Saunders Arkitektur Tidligere Prosjekter	



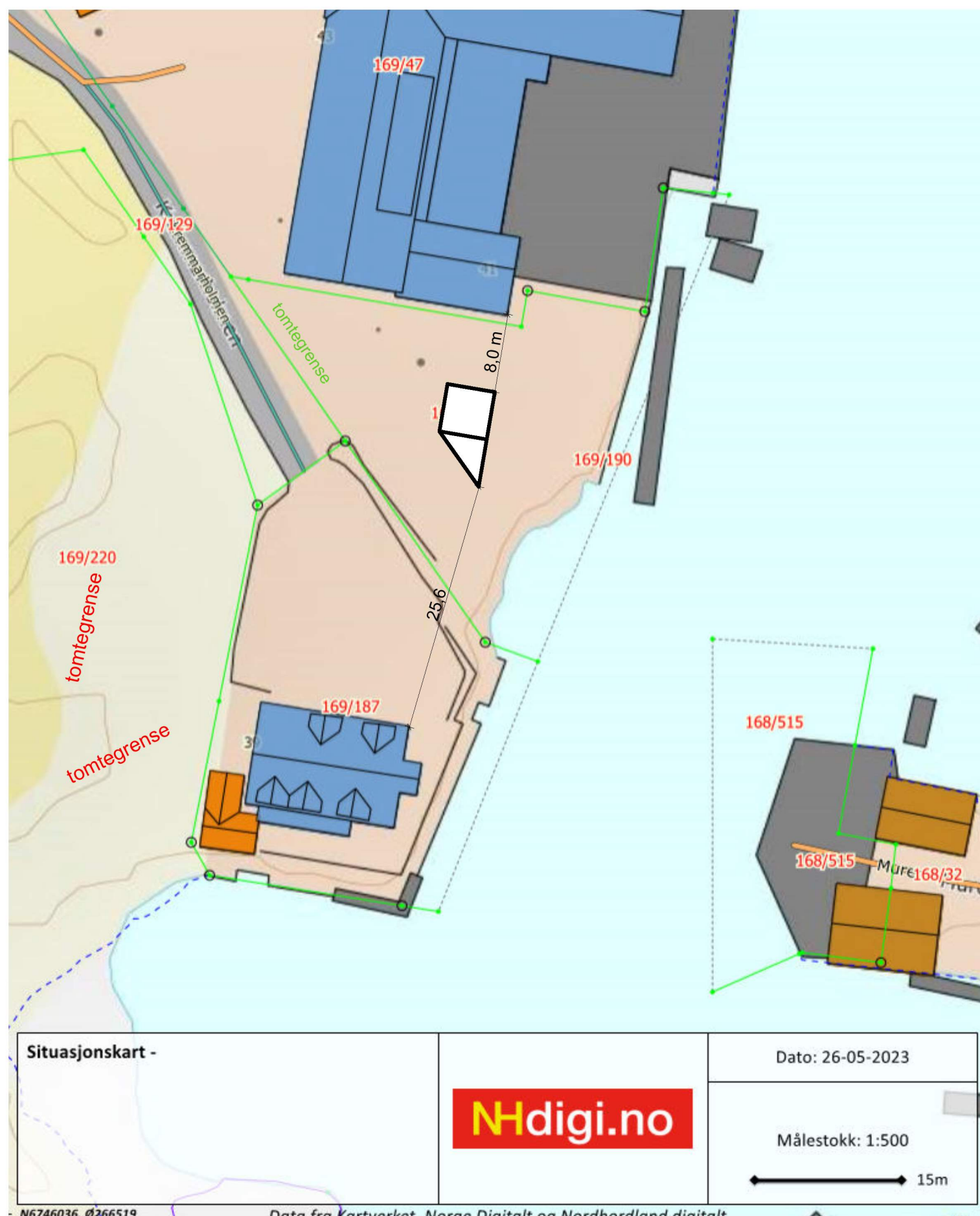




The XS Mikrohus is a finely detailed cabin designed to be manufactured off-site, shipped in and set up as a self-contained retreat. The project encapsulates Todd Saunders' approach, combining hand-crafted timber and simple finishes with careful spatial planning and striking geometric forms.

The 12 sq m triangular terrace protrudes out of the structure like an arrow. At the same time, the external cladding marries meticulous joints and details with a modernist simplicity. The tiny footprint (the 24 sq m micro-house fits within a 5m square plot) is paired with complete space efficiency. The fold-down Murphy bed can be hidden out of sight during the day, while the interior is festooned with open shelving for books, kitchen implements and even clothes.

The large sliding aluminium doors and windows and 4m internal ceiling height maximise the tiny volume, along with sliding interior doors to further save space. The exterior panelling has been carried through to the interior walls. The integral storage, folding bed, and light colour palette make this a tempting, if cosy proposition.



Tomteareal **717 m²**

BYA **36 m²**

%-BYA 5 %

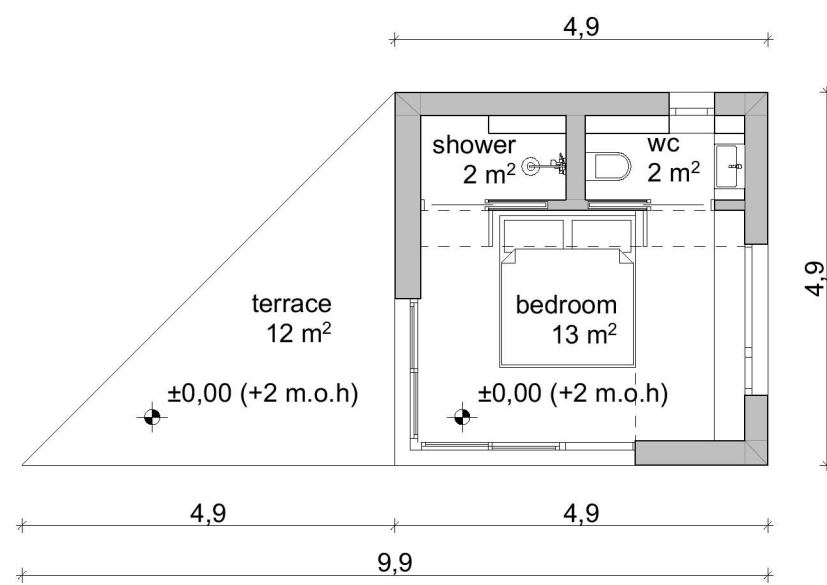
BRA **28 m²**

%-BRA 3,9 %

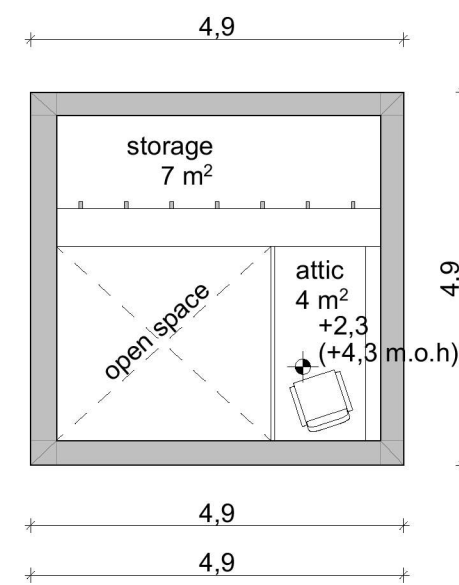
Situasjonskart -		Dato: 26-05-2023
		Målestokk: 1:500

N6746036, Ø266519 Data fra Kartverket, Norge Digitalt og Nordhordland digitalt

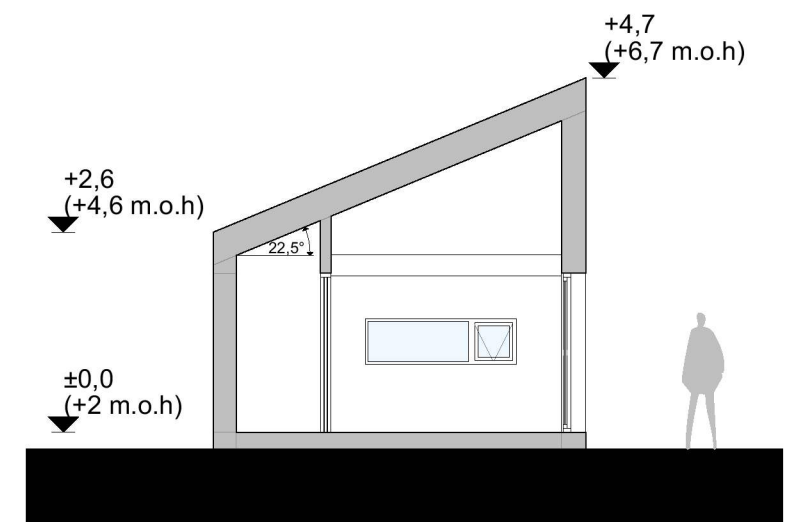




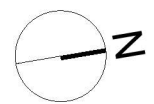
PLAN - 0 ETG



PLAN - HEMS

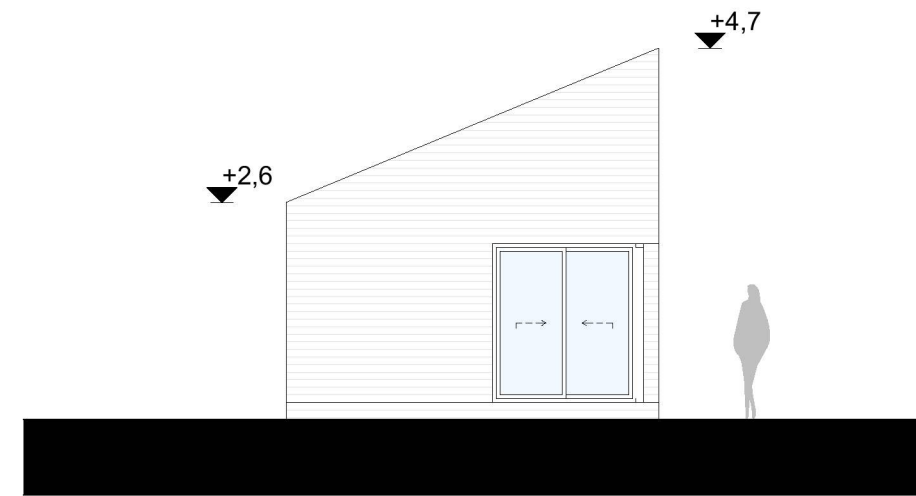


SNITT

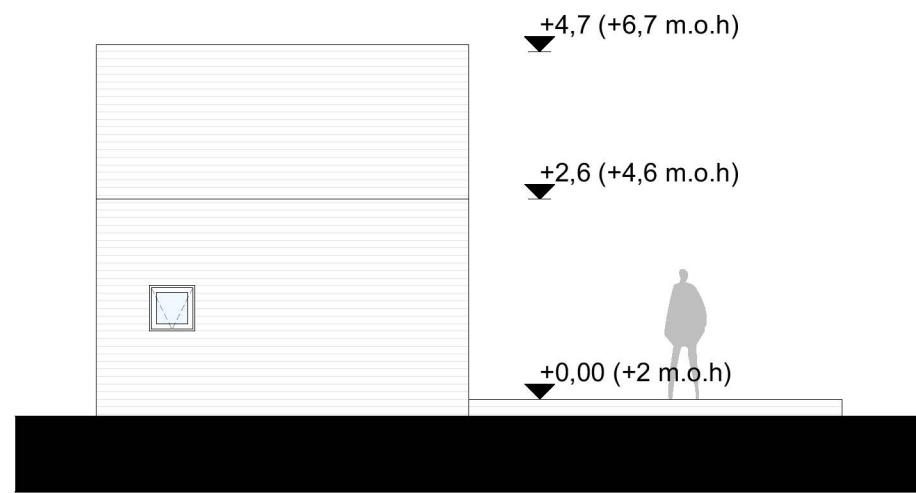




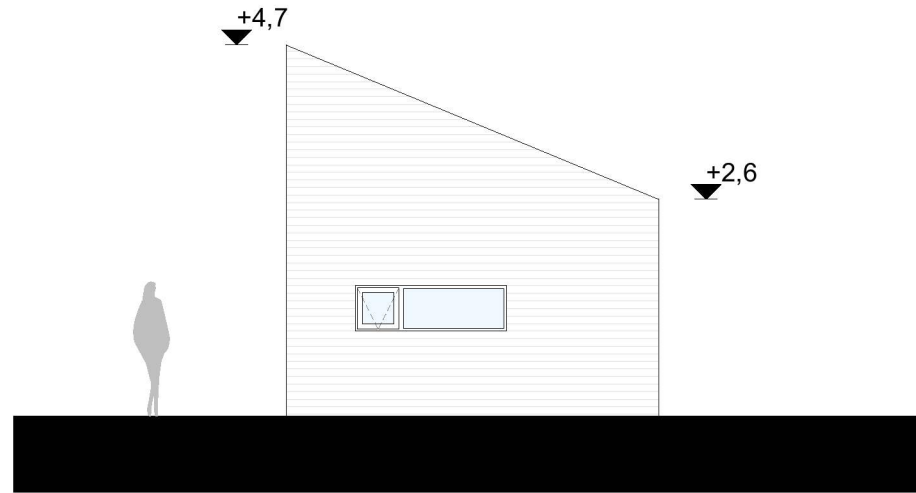
FASADE MOT ØST



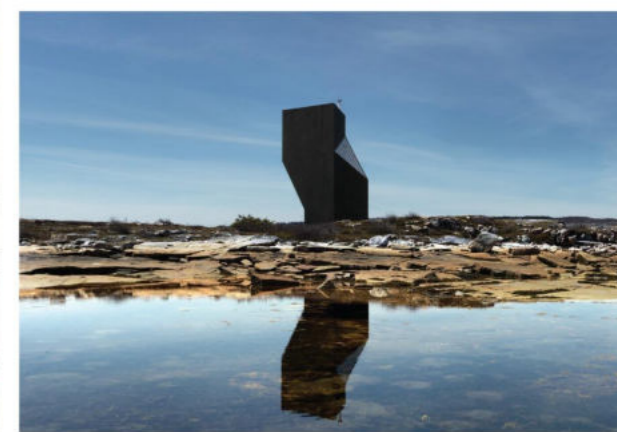
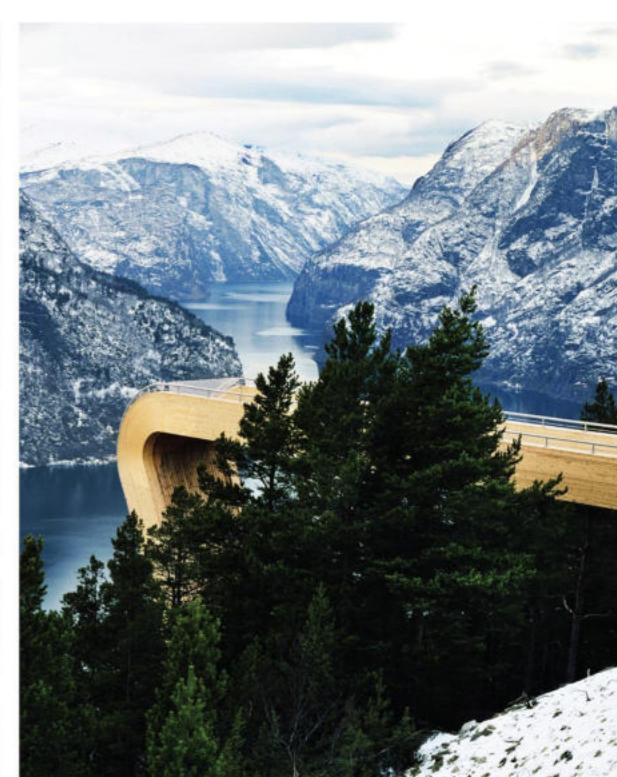
FASADE MOT SØR



FASADE MOT VEST



FASADE MOT NORD



**SAUNDERS
ARCHITECTURE**

www.saunders.no

T +47 55 36 85 06
M +47 975 25 761

E post@saunders.no
Wernersholmvegen 31
5232 Paradis
Norway