

# XS MIKROHUS

SAUNDERS  
ARCHITECTURE

5 JUNE 2023

GNR/BNR 169/190, FEDJE

BYGGEMELDINGSTEGNINGER



<b>02</b>	Innhold	
<b>03</b>	Eksteriør bilder	
<b>04</b>	Interiør bilder	
<b>05</b>	Kort beskrivelse	
<b>06</b>	Situasjonskart	1:500
<b>07</b>	Situasjonsplan	1:200
<b>08</b>	Plan & snitt	1:100
<b>09</b>	Fasader	1:100
<b>10</b>	Saunders Arkitektur Tidligere Prosjekter	



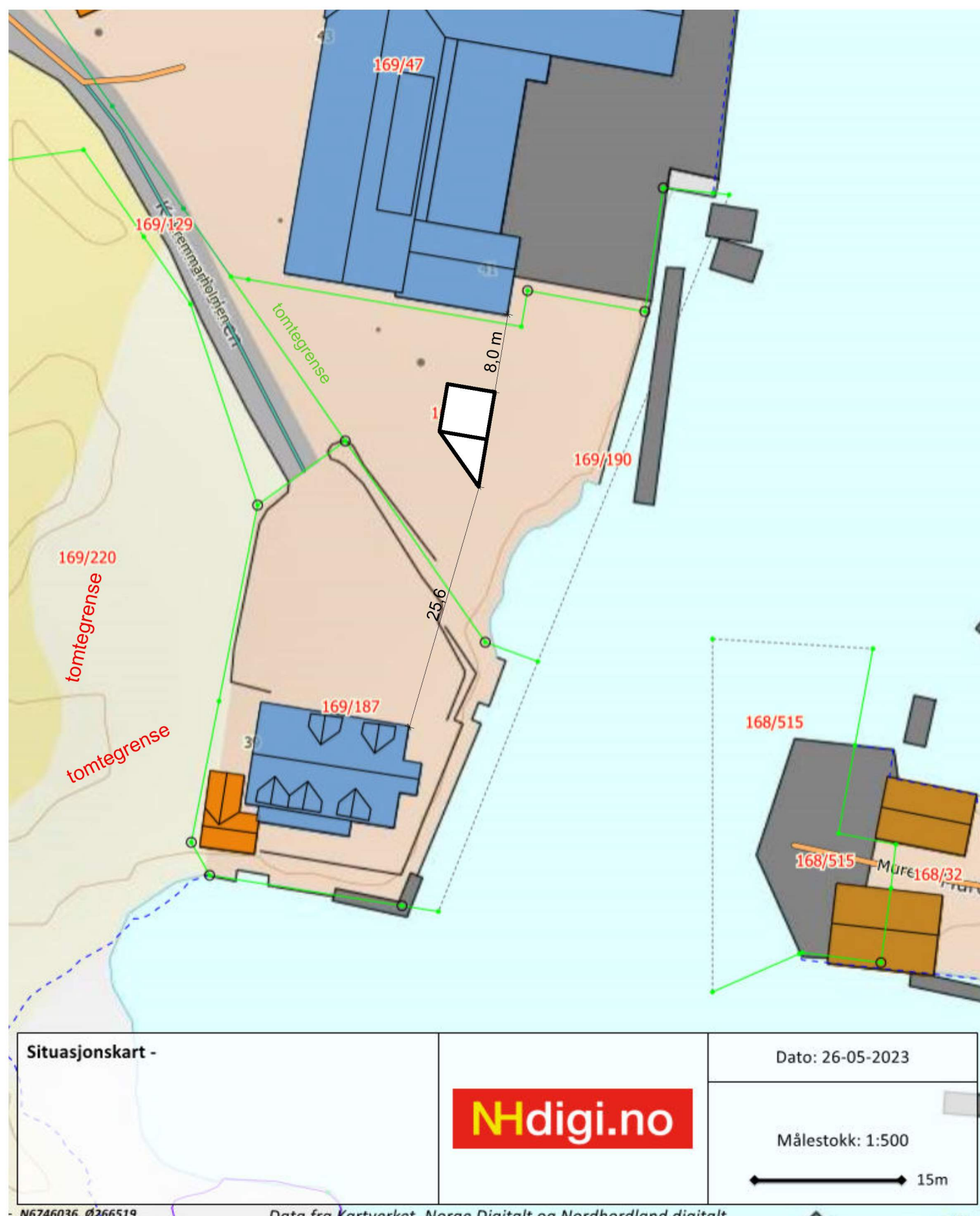




The XS Mikrohus is a finely detailed cabin designed to be manufactured off-site, shipped in and set up as a self-contained retreat. The project encapsulates Todd Saunders' approach, combining hand-crafted timber and simple finishes with careful spatial planning and striking geometric forms.

The 12 sq m triangular terrace protrudes out of the structure like an arrow. At the same time, the external cladding marries meticulous joints and details with a modernist simplicity. The tiny footprint (the 24 sq m micro-house fits within a 5m square plot) is paired with complete space efficiency. The fold-down Murphy bed can be hidden out of sight during the day, while the interior is festooned with open shelving for books, kitchen implements and even clothes.

The large sliding aluminium doors and windows and 4m internal ceiling height maximise the tiny volume, along with sliding interior doors to further save space. The exterior panelling has been carried through to the interior walls. The integral storage, folding bed, and light colour palette make this a tempting, if cosy proposition.



**Tomteareal**      **717 m<sup>2</sup>**

**BYA**      **36 m<sup>2</sup>**

%-BYA      5 %

**BRA**      **28 m<sup>2</sup>**

%-BRA      3,9 %

Situasjonskart -

N6746036, Ø266519

Data fra Kartverket, Norge Digitalt og Nordhordland digitalt

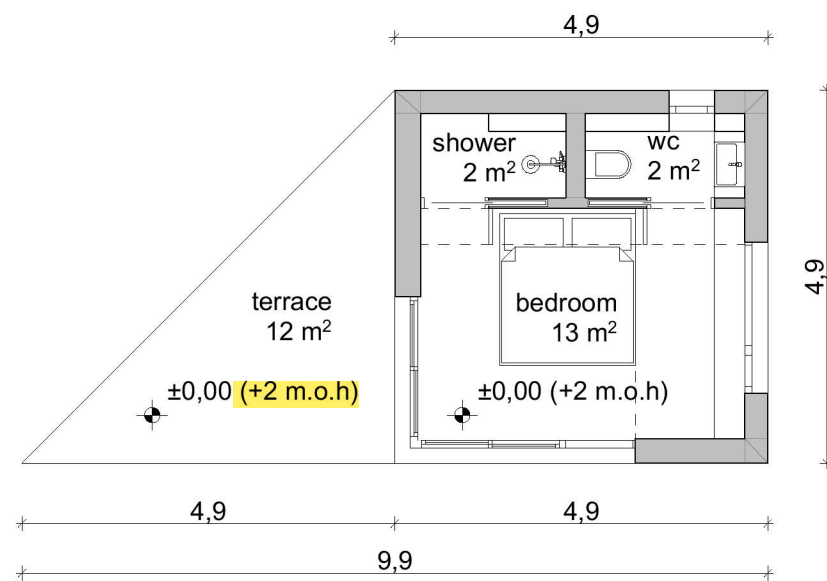
**Nhdigi.no**

Dato: 26-05-2023

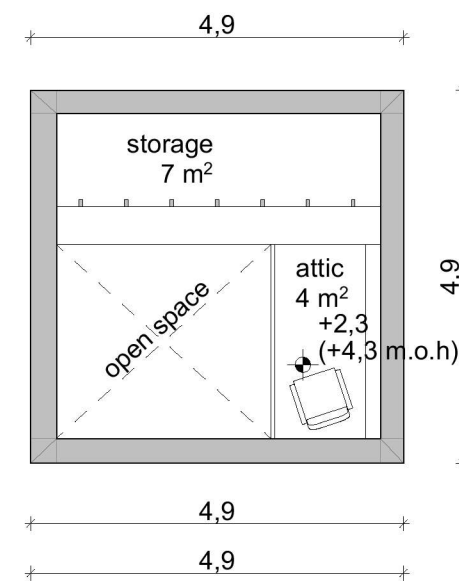
Målestokk: 1:500

15m

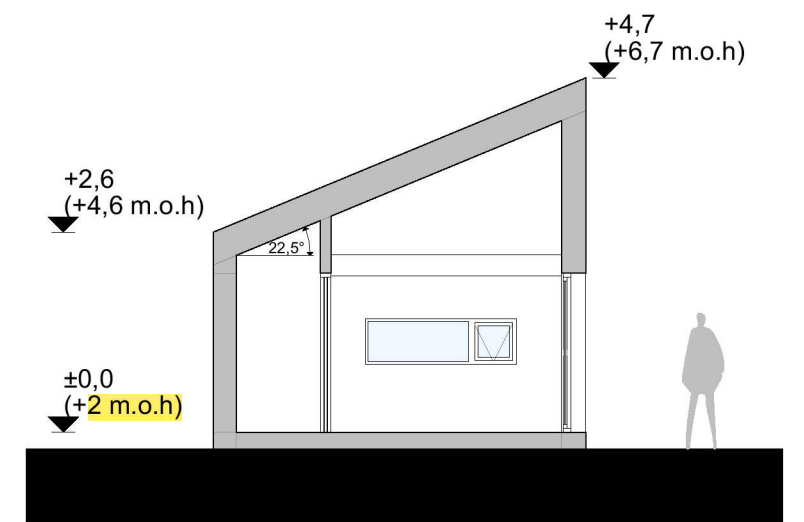




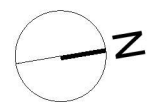
PLAN - 0 ETG



PLAN - HEMS



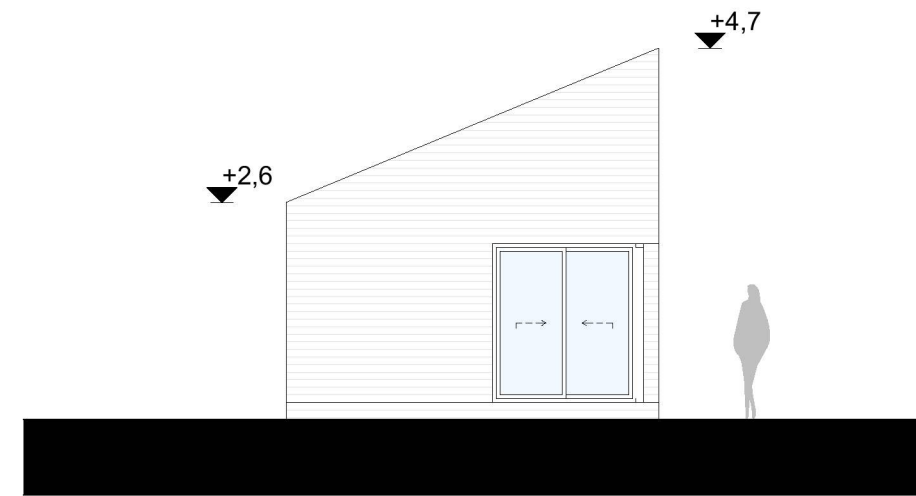
SNITT







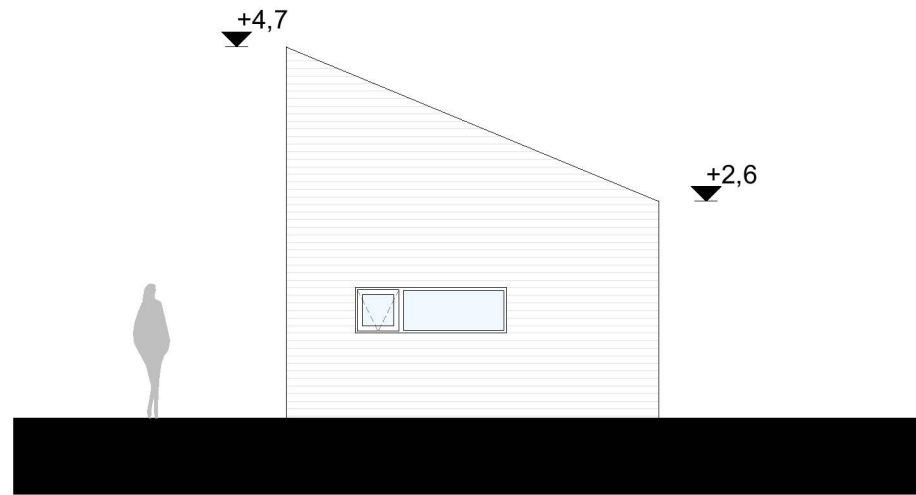
FASADE MOT ØST



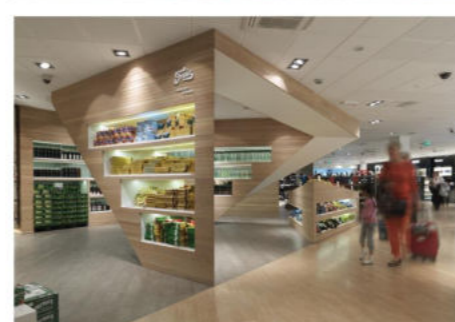
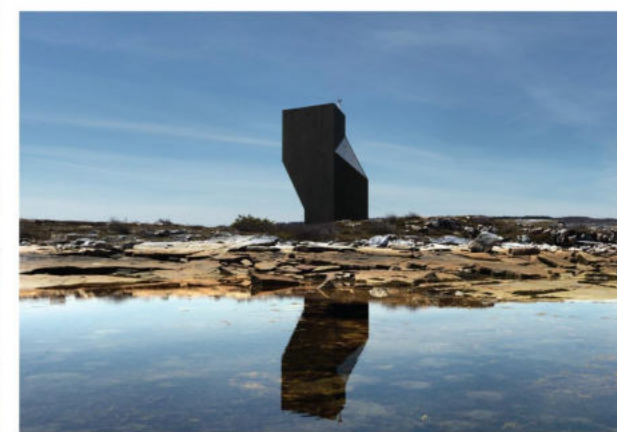
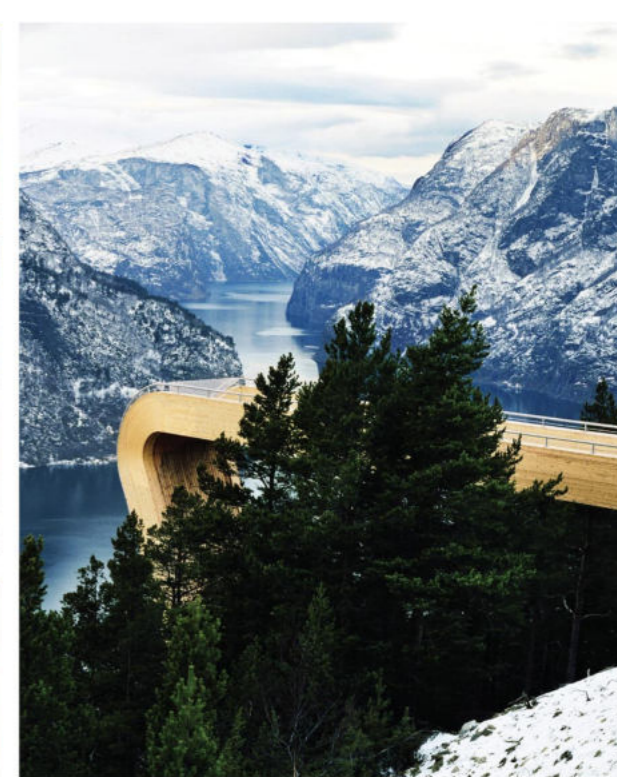
FASADE MOT SØR



FASADE MOT VEST



FASADE MOT NORD



# SAUNDERS ARCHITECTURE

[www.saunders.no](http://www.saunders.no)

T +47 55 36 85 06  
M +47 975 25 761

E [post@saunders.no](mailto:post@saunders.no)  
Wernersholmvegen 31  
5232 Paradis  
Norway