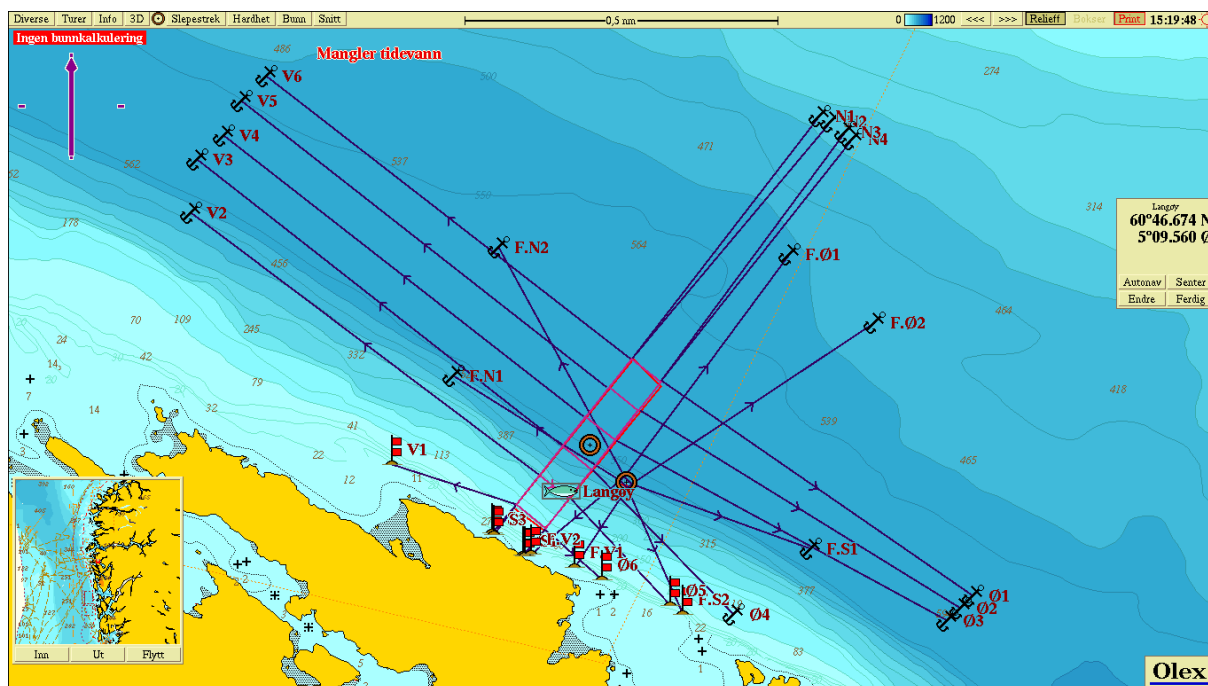


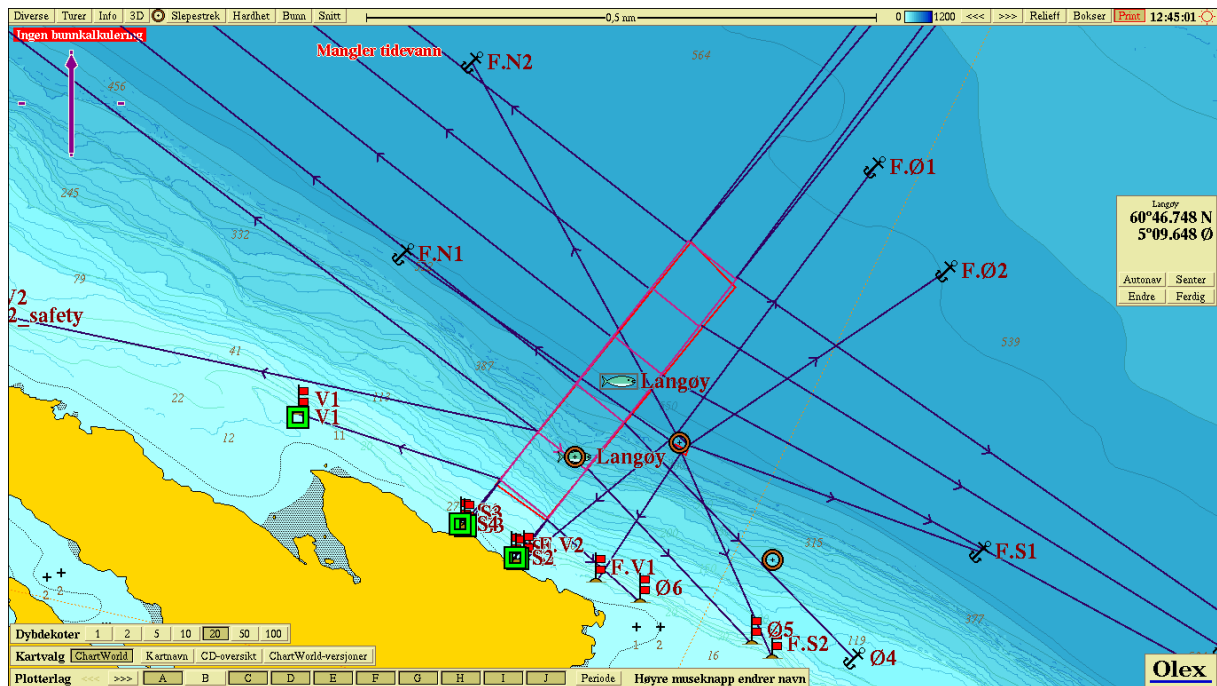
Fyllingsnes Fisk AS lokalitet Langøy – «as built»

Anlegg: Langøy



Punkt/Line	START		SLUTT	
	Breddegr.	Lengdegr.	Breddegr.	Lengdegr.
Fiskeridir.	60°46,674 N	05°09,560 Ø	-	-
Midtpunkt	60°46,747 N	05°09,652 Ø	-	-
NV	60°46,884 N	05°09,787 Ø	-	-
NØ	60°46,847 N	05°09,883 Ø	-	-
SØ	60°46,614 N	05°09,506 Ø	-	-
SV	60°46,651 N	05°09,410 Ø	-	-
s1	60°46,614 N	05°09,506 Ø	60°46,570 N	05°09,441 Ø
s2	60°46,614 N	05°09,506 Ø	60°46,572 N	05°09,433 Ø
s3	60°46,651 N	05°09,410 Ø	60°46,604 N	05°09,339 Ø
s4	60°46,651 N	05°09,410 Ø	60°46,606 N	05°09,332 Ø
v1	60°46,651 N	05°09,410 Ø	60°46,715 N	05°09,006 Ø
v2	60°46,698 N	05°09,485 Ø	60°47,117 N	05°08,348 Ø
v3	60°46,745 N	05°09,562 Ø	60°47,202 N	05°08,368 Ø
v4	60°46,792 N	05°09,637 Ø	60°47,240 N	05°08,454 Ø
v5	60°46,839 N	05°09,713 Ø	60°47,295 N	05°08,512 Ø
v6	60°46,884 N	05°09,787 Ø	60°47,335 N	05°08,592 Ø
n1	60°46,884 N	05°09,787 Ø	60°47,272 N	05°10,401 Ø
n2	60°46,884 N	05°09,787 Ø	60°47,263 N	05°10,439 Ø
n3	60°46,847 N	05°09,883 Ø	60°47,246 N	05°10,485 Ø
n4	60°46,847 N	05°09,883 Ø	60°47,235 N	05°10,508 Ø
Ø1	60°46,847 N	05°09,883 Ø	60°46,506 N	05°10,902 Ø
Ø2	60°46,802 N	05°09,808 Ø	60°46,486 N	05°10,861 Ø
Ø3	60°46,755 N	05°09,733 Ø	60°46,467 N	05°10,818 Ø
Ø4	60°46,708 N	05°09,657 Ø	60°46,476 N	05°10,120 Ø
Ø5	60°46,661 N	05°09,581 Ø	60°46,490 N	05°09,914 Ø
Ø6	60°46,614 N	05°09,506 Ø	60°46,531 N	05°09,691 Ø

Flåte: Langøy



Punkt/Line	START		SLUTT	
	Breddegr.	Lengdegr.	Breddegr.	Lengdegr.
Fiskeridir.	60°46,674 N	05°09,560 Ø		
Midtpunkt	60°46,687 N	05°09,768 Ø		
NV	60°46,690 N	05°09,749 Ø		
NØ	60°46,696 N	05°09,763 Ø		
SØ	60°46,685 N	05°09,786 Ø		
SV	60°46,678 N	05°09,772 Ø		
F.V1	60°46,678 N	05°09,772 Ø	60°46,553 N	05°09,605 Ø
F.V2	60°46,690 N	05°09,749 Ø	60°46,573 N	05°09,458 Ø
F.N1	60°46,690 N	05°09,749 Ø	60°46,872 N	05°09,214 Ø
F.N2	60°46,696 N	05°09,763 Ø	60°47,060 N	05°09,353 Ø
F.Ø1	60°46,696 N	05°09,763 Ø	60°46,957 N	05°10,305 Ø
F.Ø2	60°46,685 N	05°09,786 Ø	60°46,942 N	05°10,581 Ø
F.S1	60°46,685 N	05°09,786 Ø	60°46,581 N	05°10,372 Ø
F.S2	60°46,678 N	05°09,772 Ø	60°46,473 N	05°09,956 Ø

NB!

Start: Er posisjonen oppe på anlegget.

Stopp: Er posisjonen nede på bunnfestet/ev. bolt

Byggeperiode: mars/april 2015