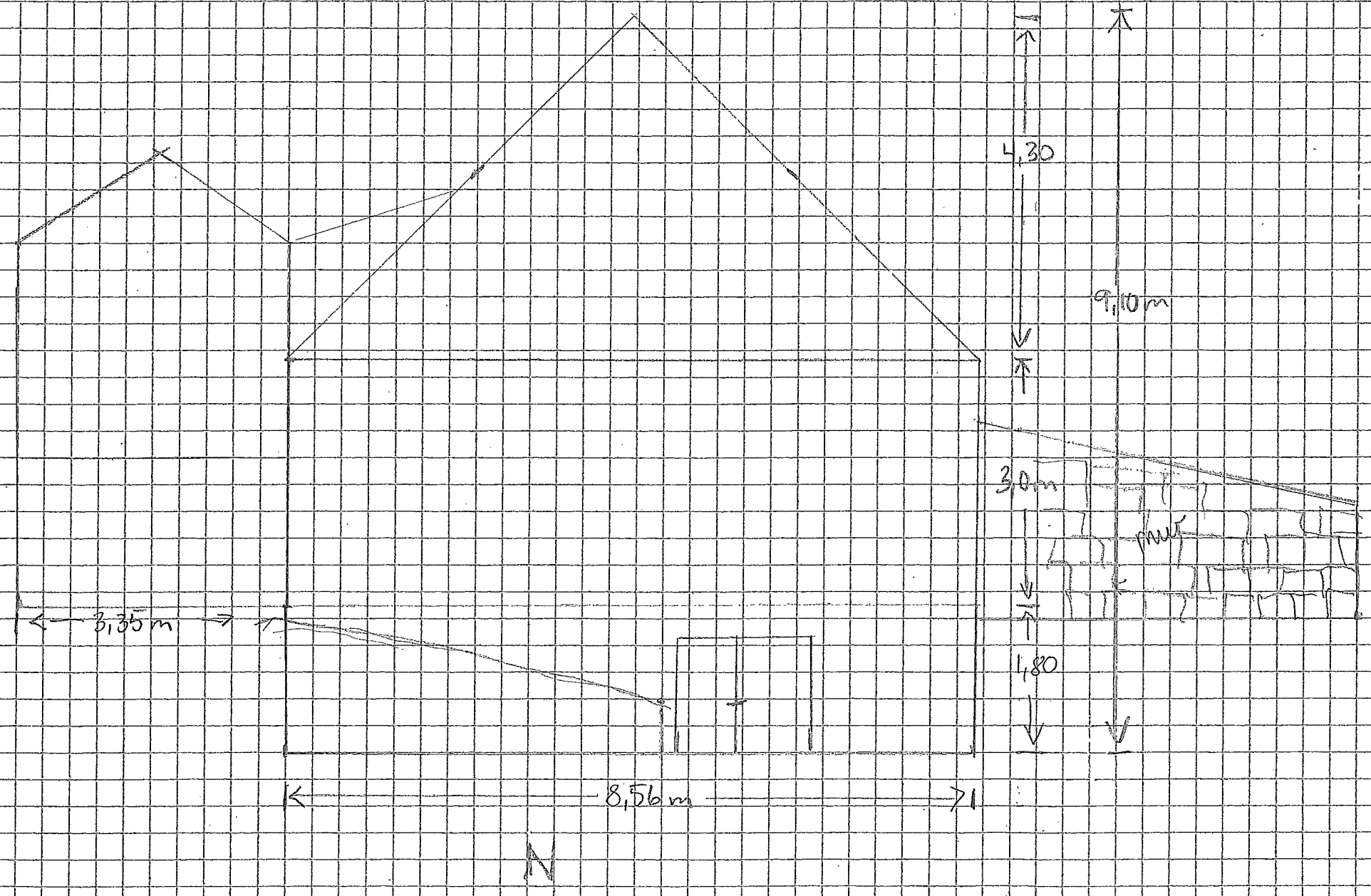
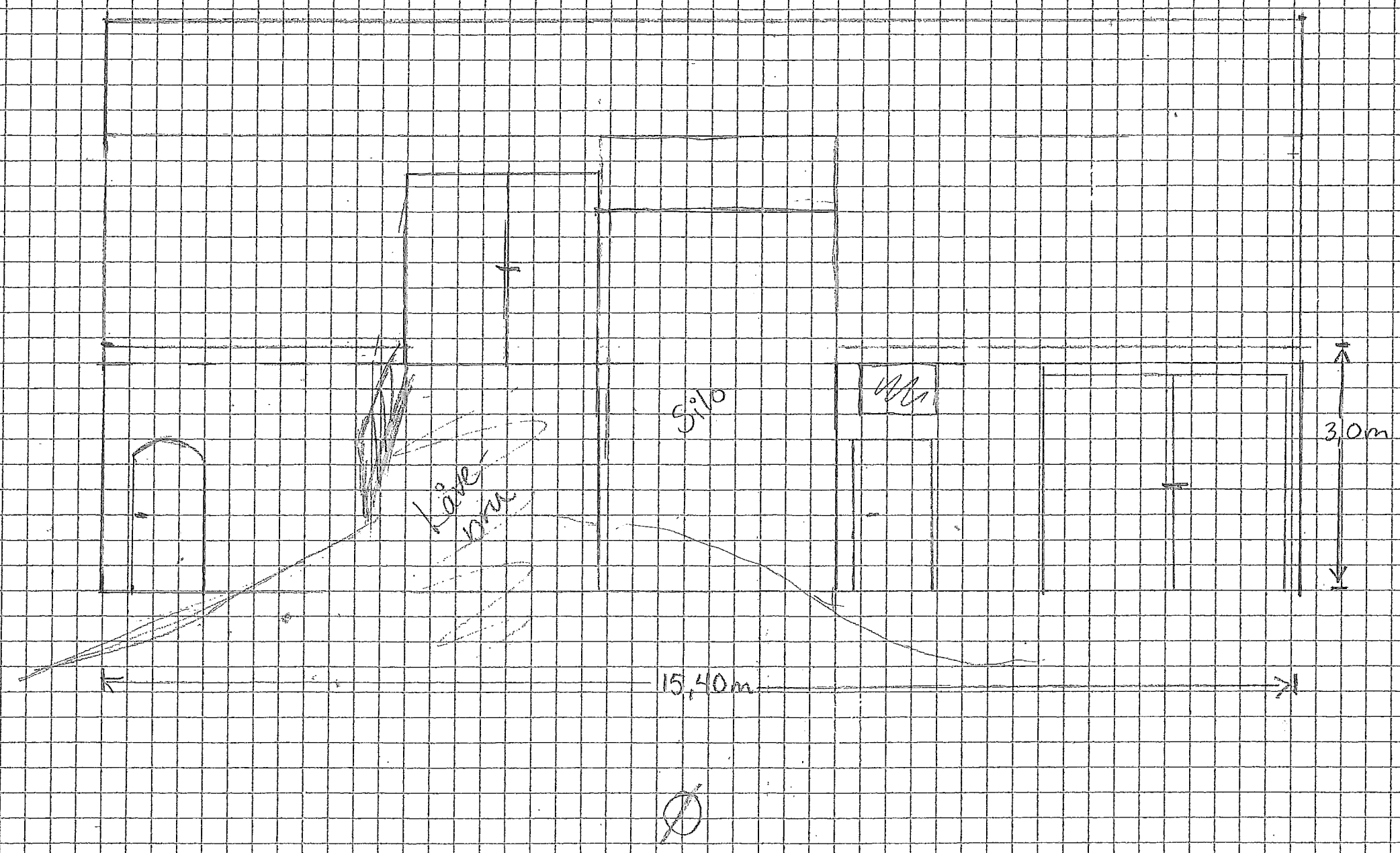


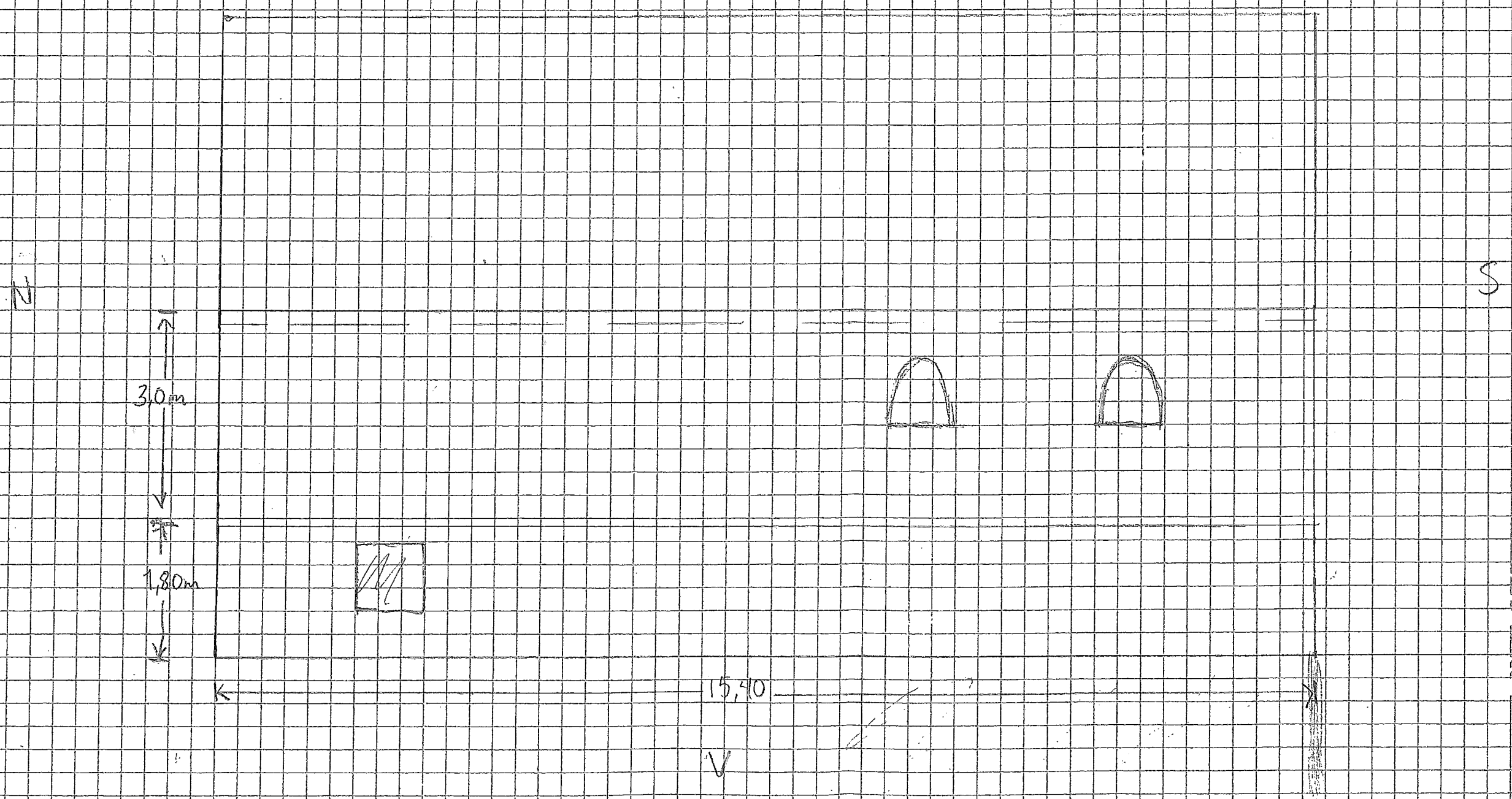
Eksisterende læve



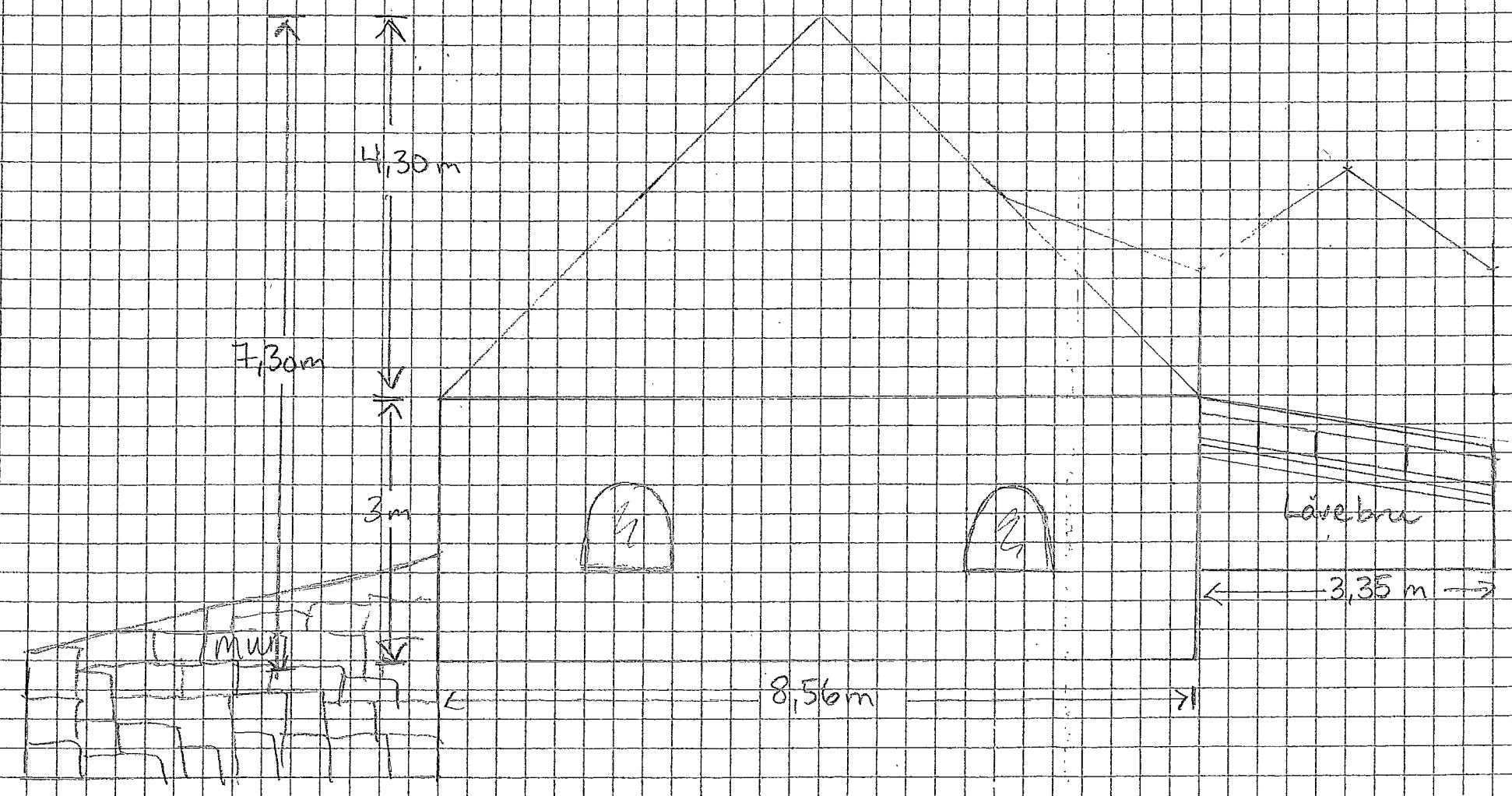
Eksisterende låve



Eksisterende läve



Eksisterende läve



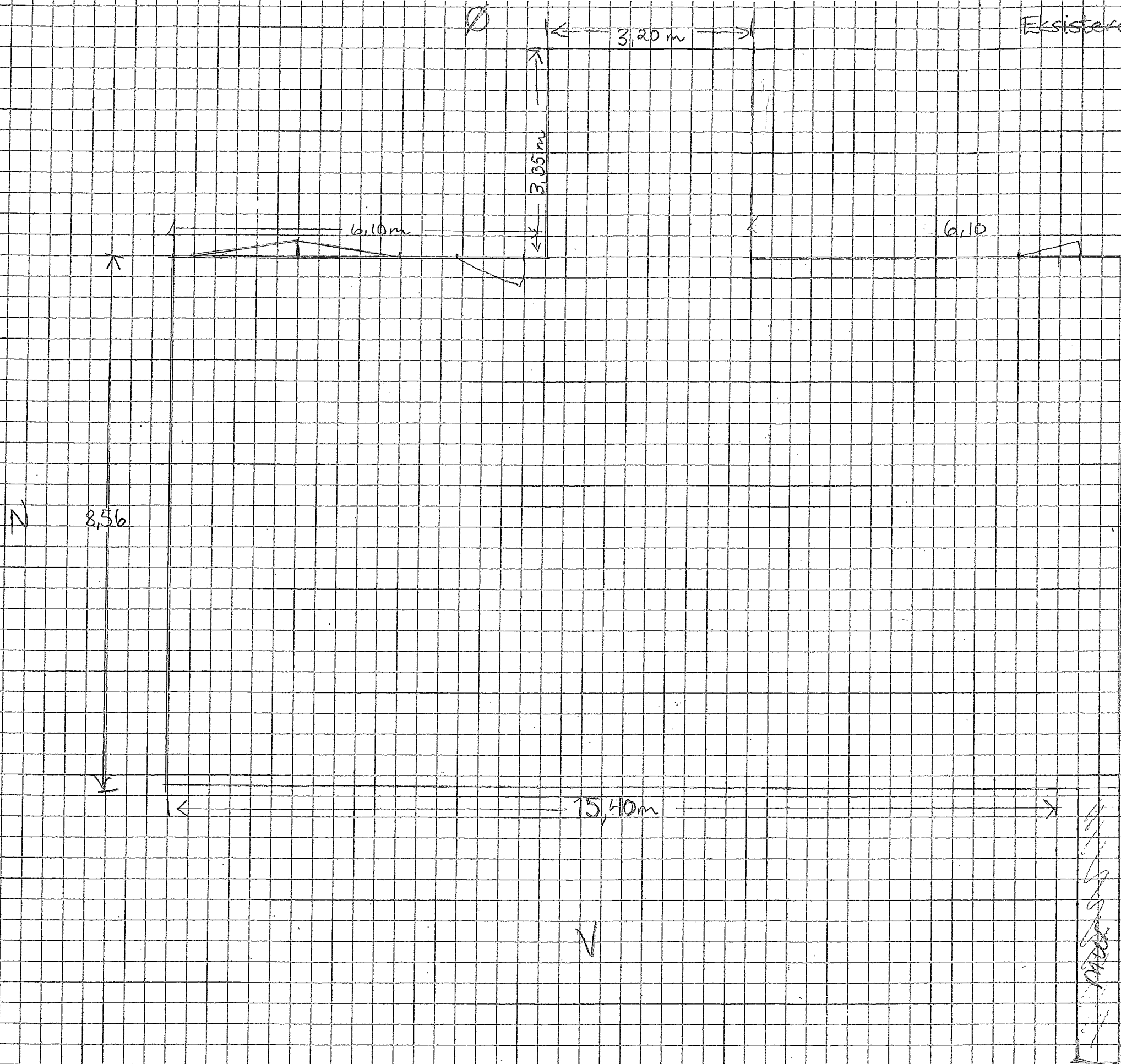
8,56m

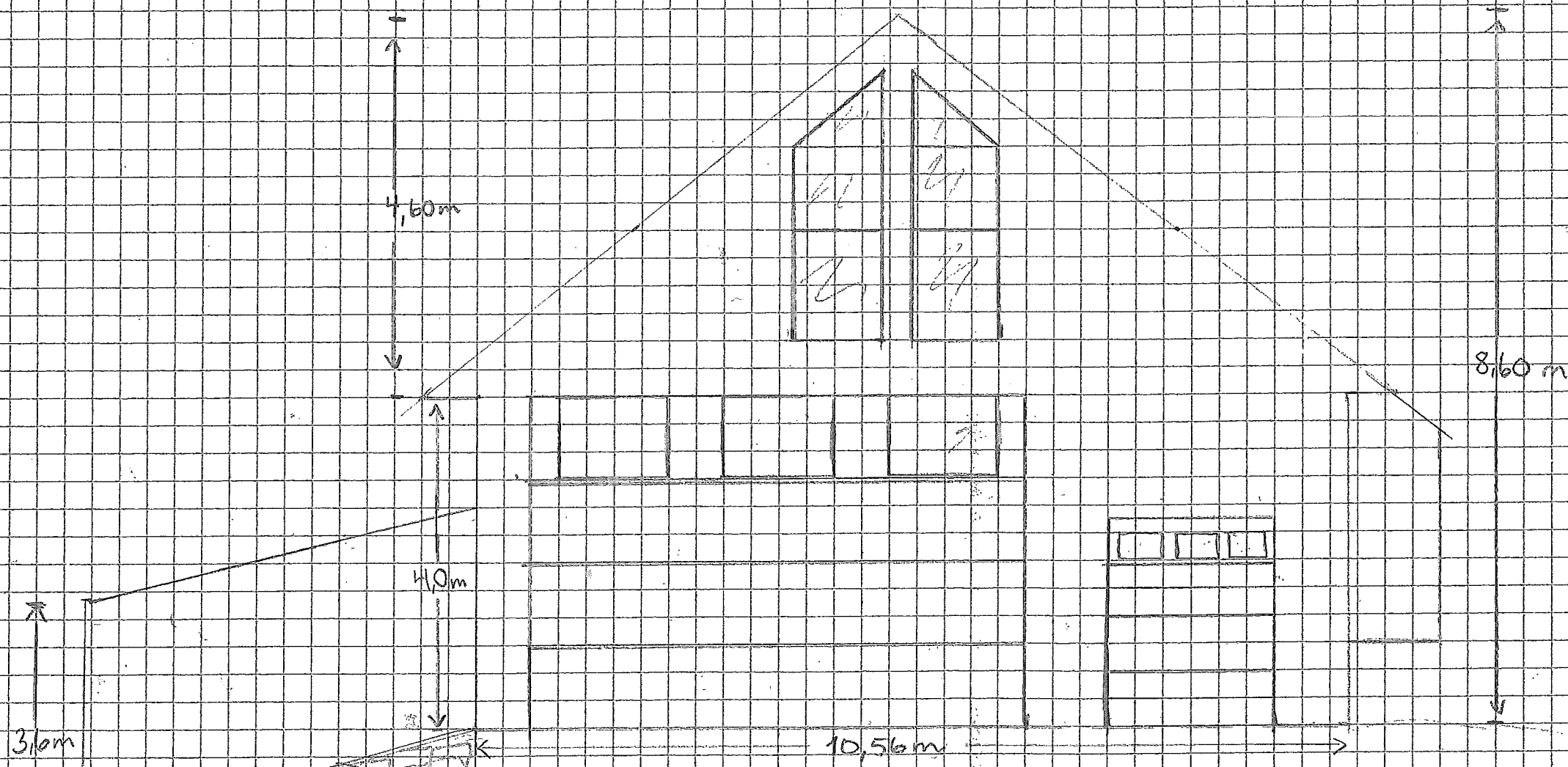
Låvebru

3,35 m

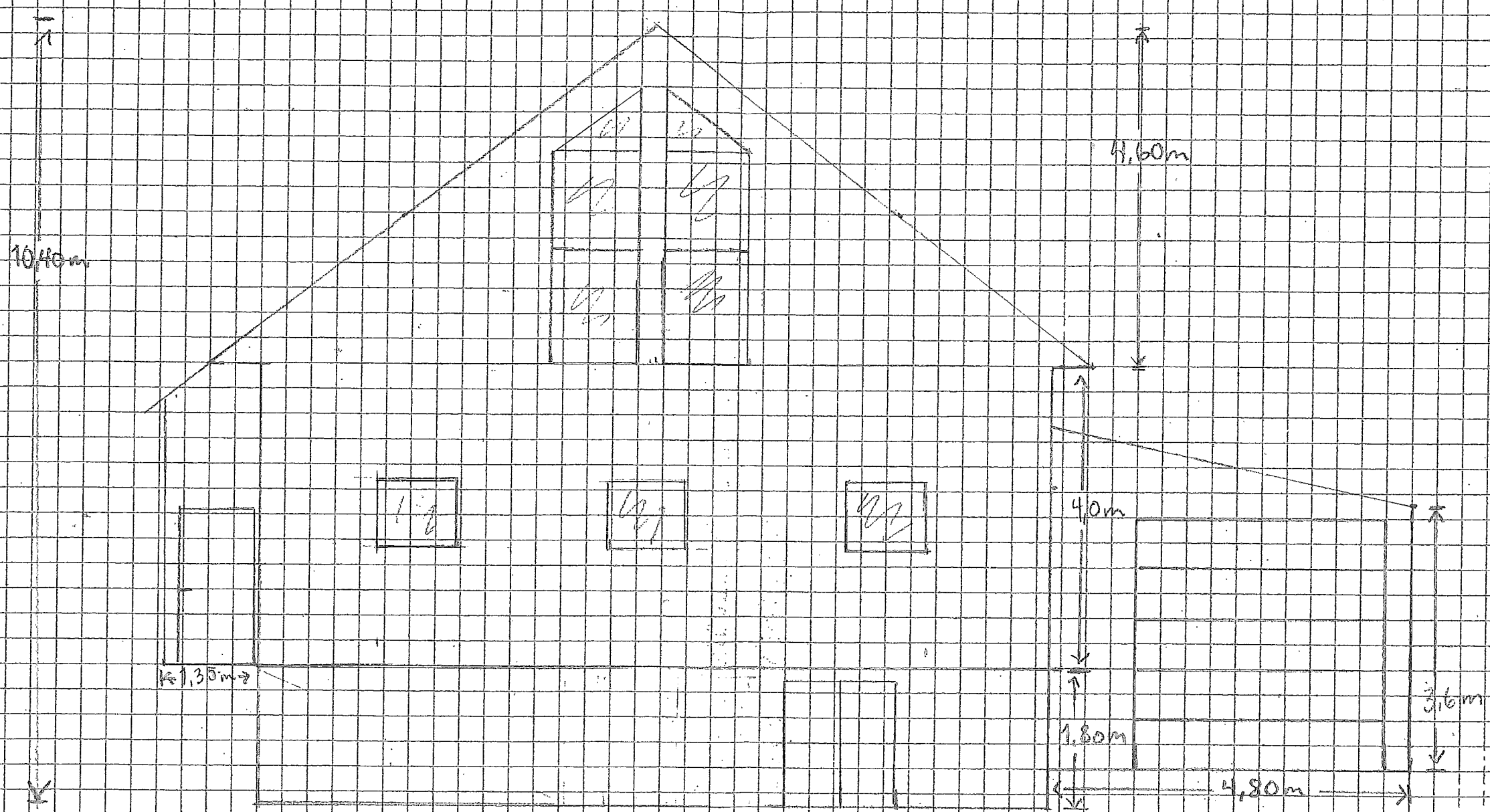
S

Eksisterende läve





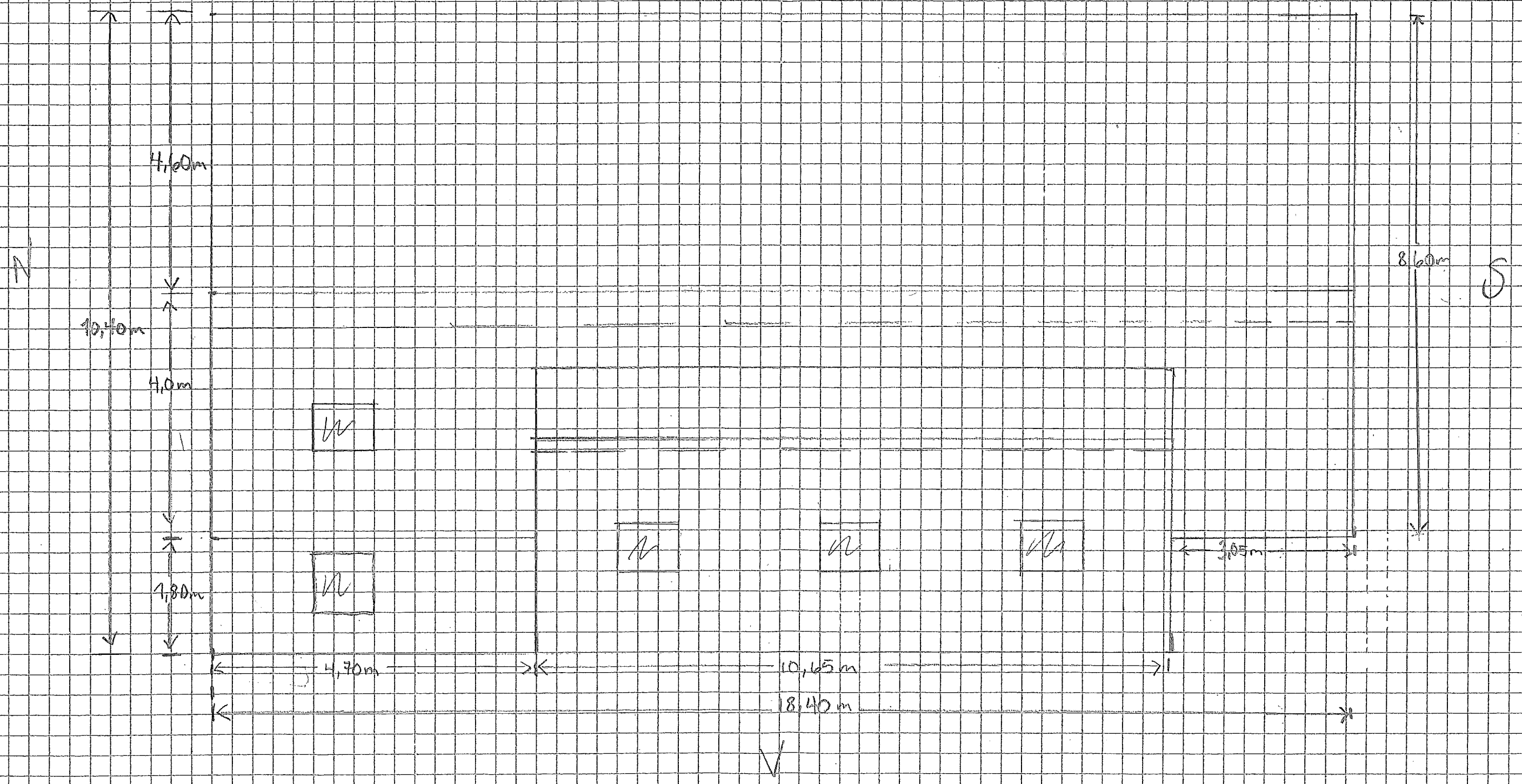
S

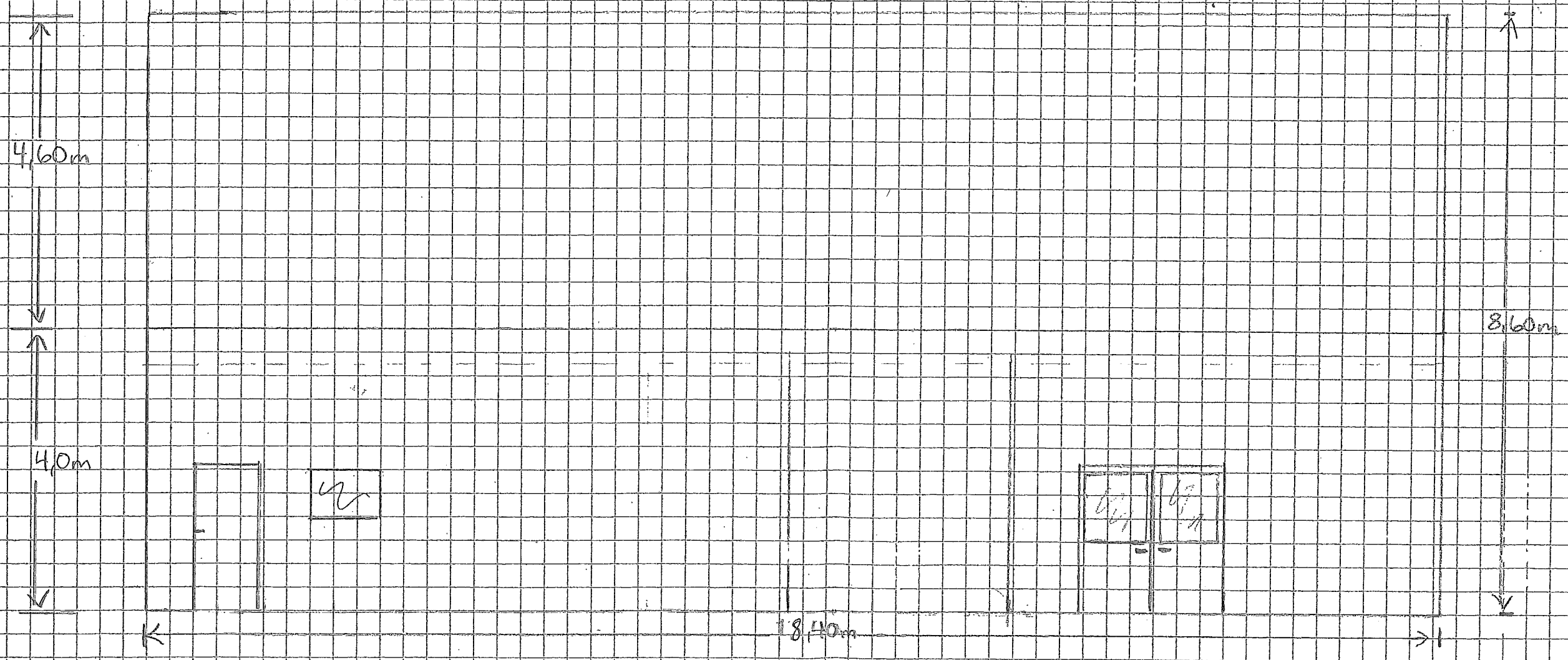


1:150

1,5:100

10,56m
N

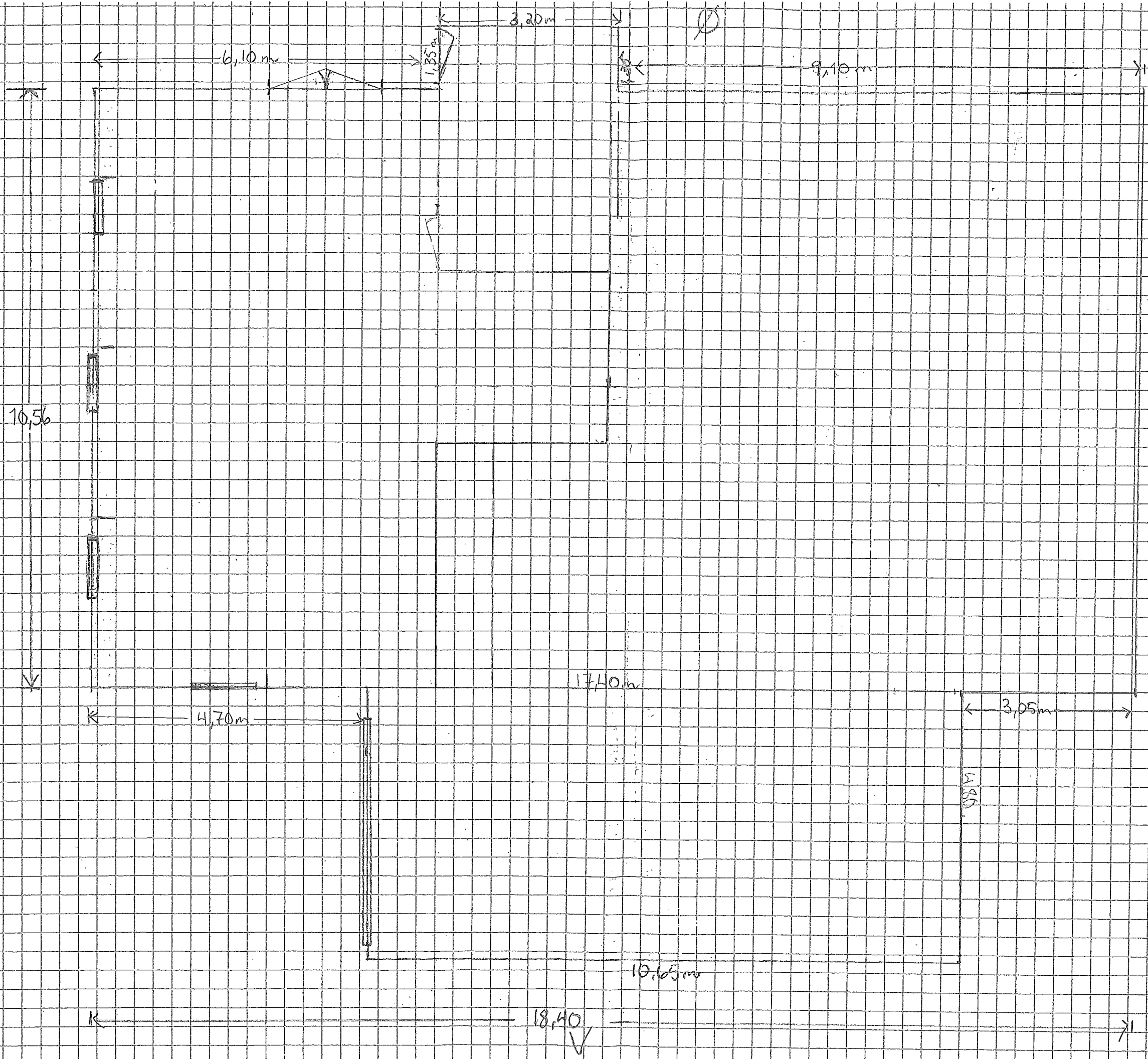




Ø

1,5:100

E16



N

S

10,56

4,70 m

17,40 m

3,05 m

10,65 m

18,40

3,20 m

6,10 m

9,10 m

1,80

⊘