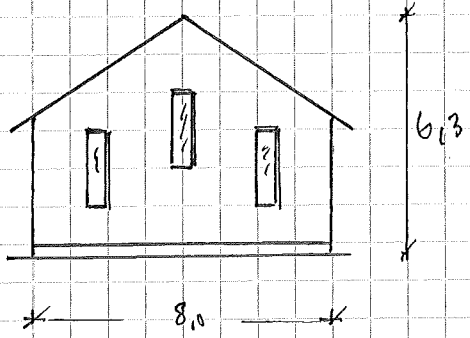
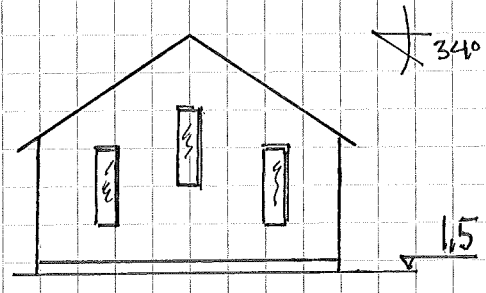


E1

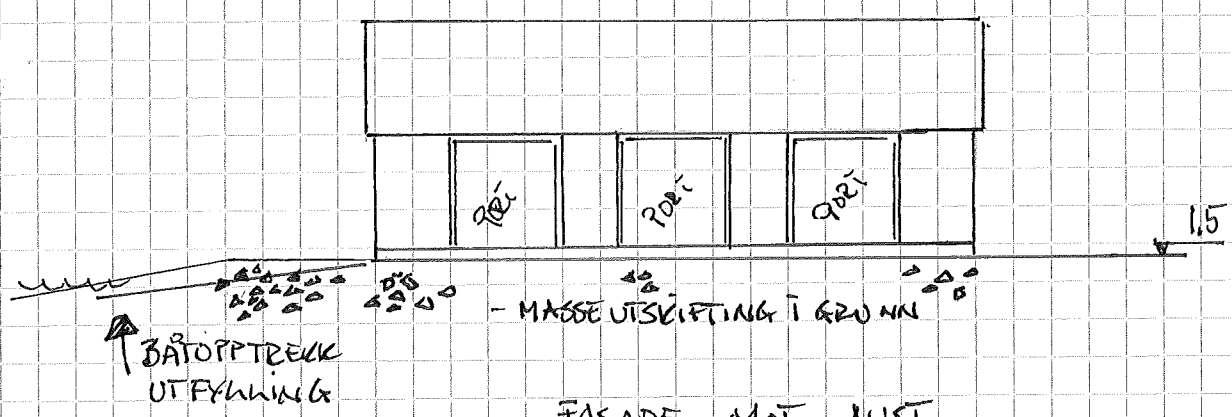
FASADE MOT SØR



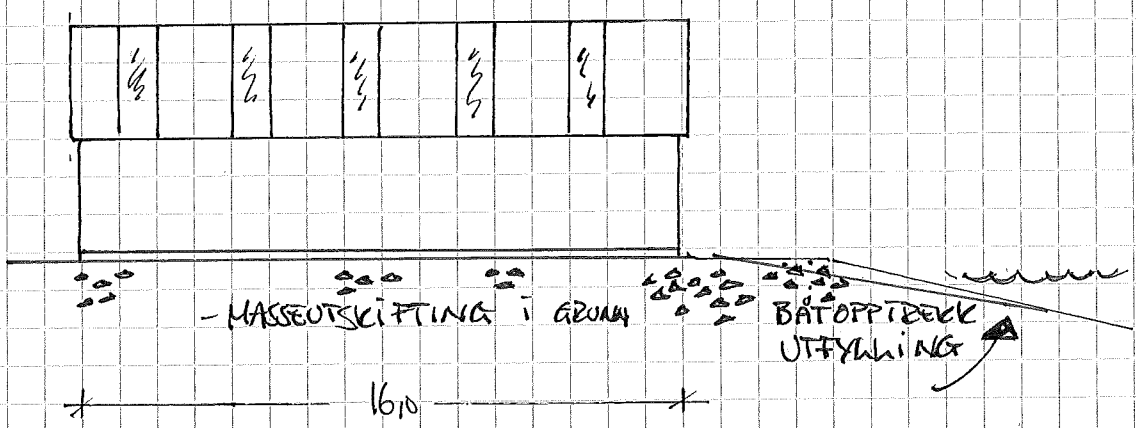
FASADE MOT NORD



FASADE MOT VEST



FASADE MOT ØST



- BETONGSØLE / FUNDAMENT
- RÅBYKK I TZE
- KVEDNING I TZE OG ALU-PLATE
- TAKPLATE I ALU OG "KYS" PLATE

BÅTHUS / MÅST
 GBNR 83/1 - LINDAS
 JAKOB OG ANNA VÅHNE
 M 18200
 W 18/5-17