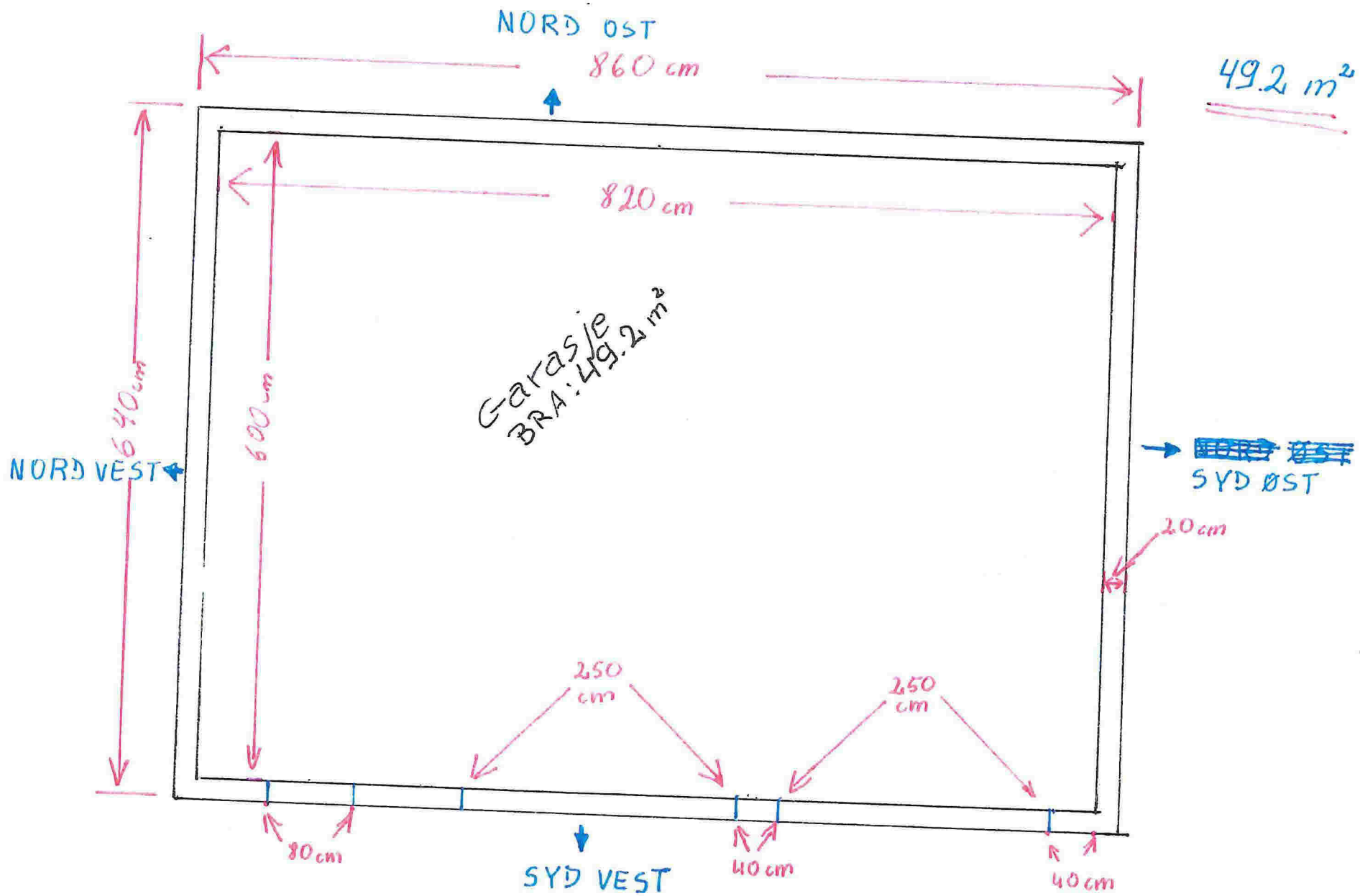


NORD VEST

1:500



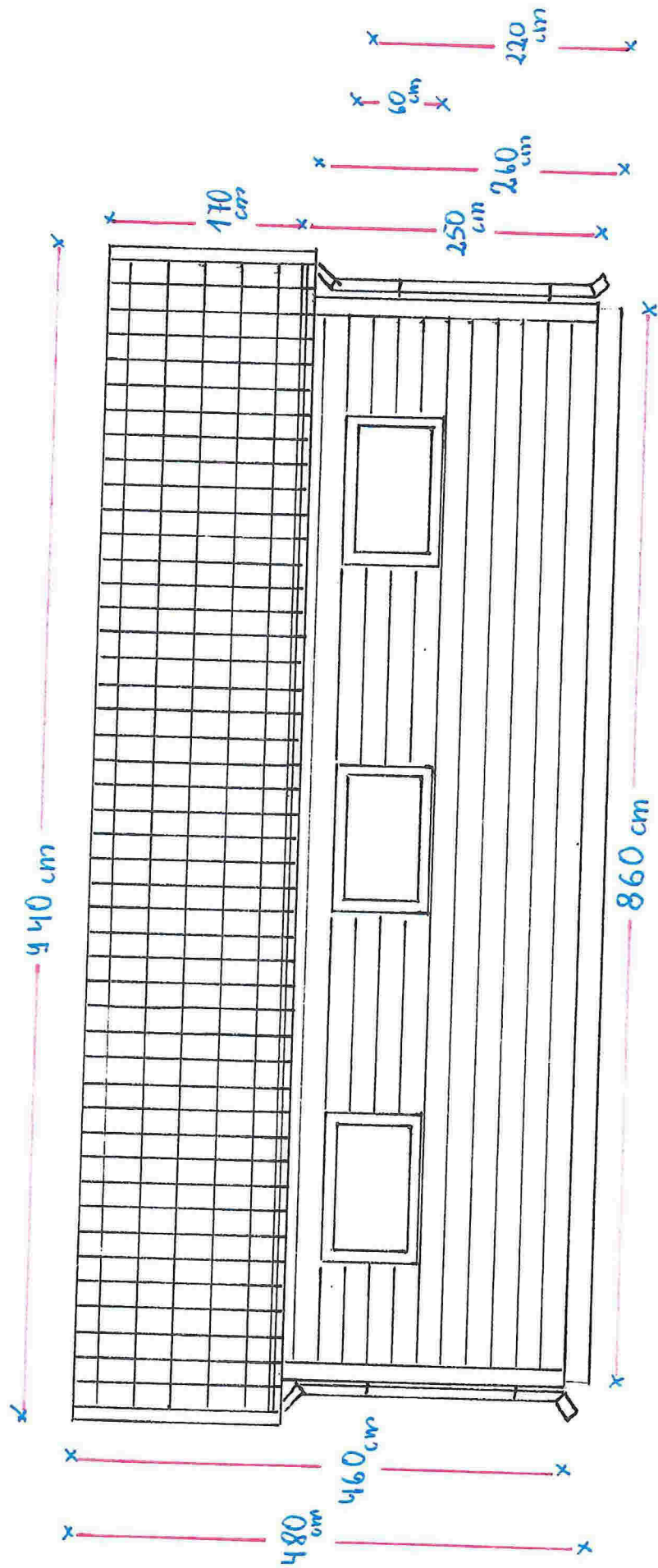
49.2 m²

Garasje
BRA: 49.2 m²

SYD ØST

SYD VEST

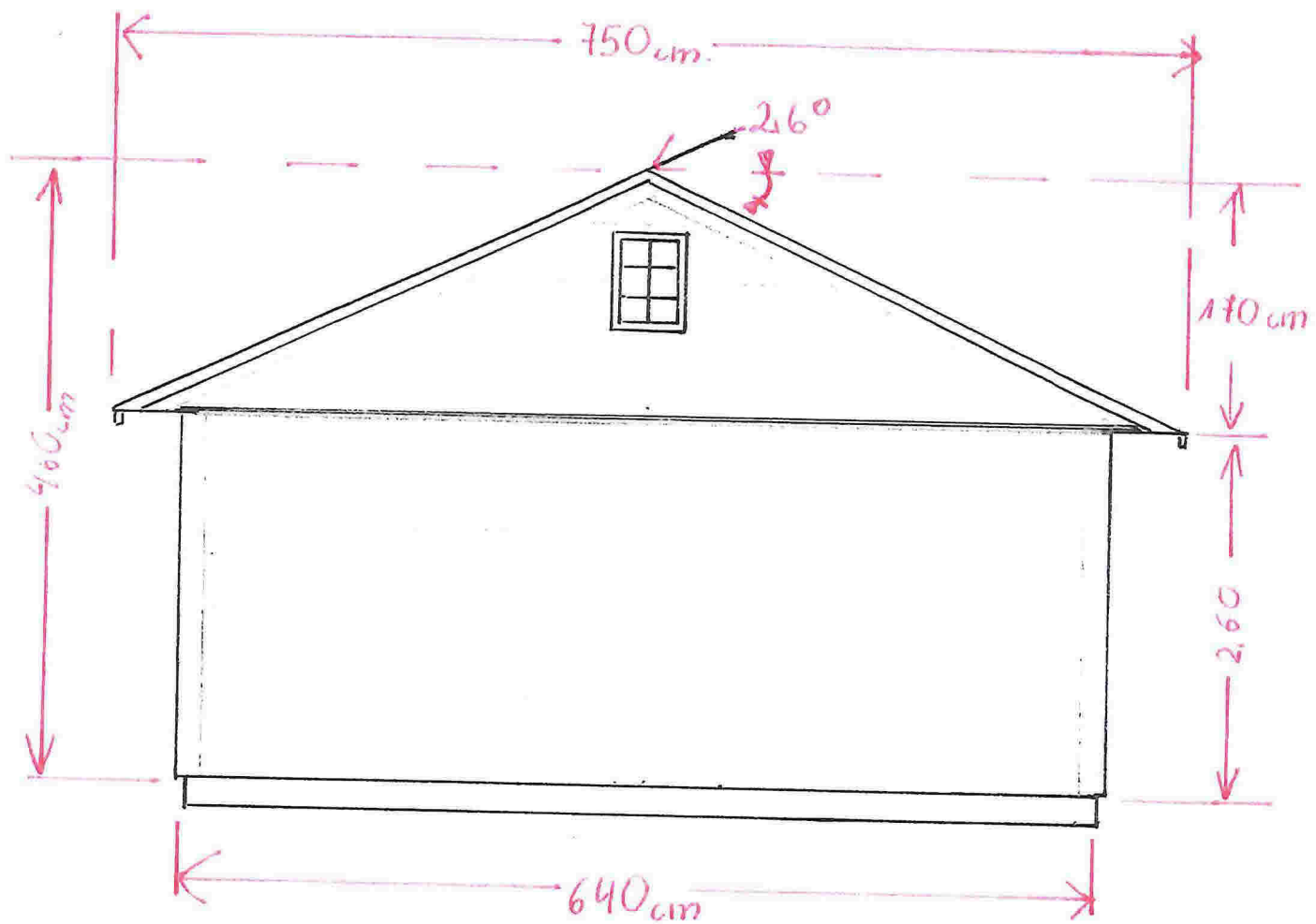
1:500



x 100 cm x

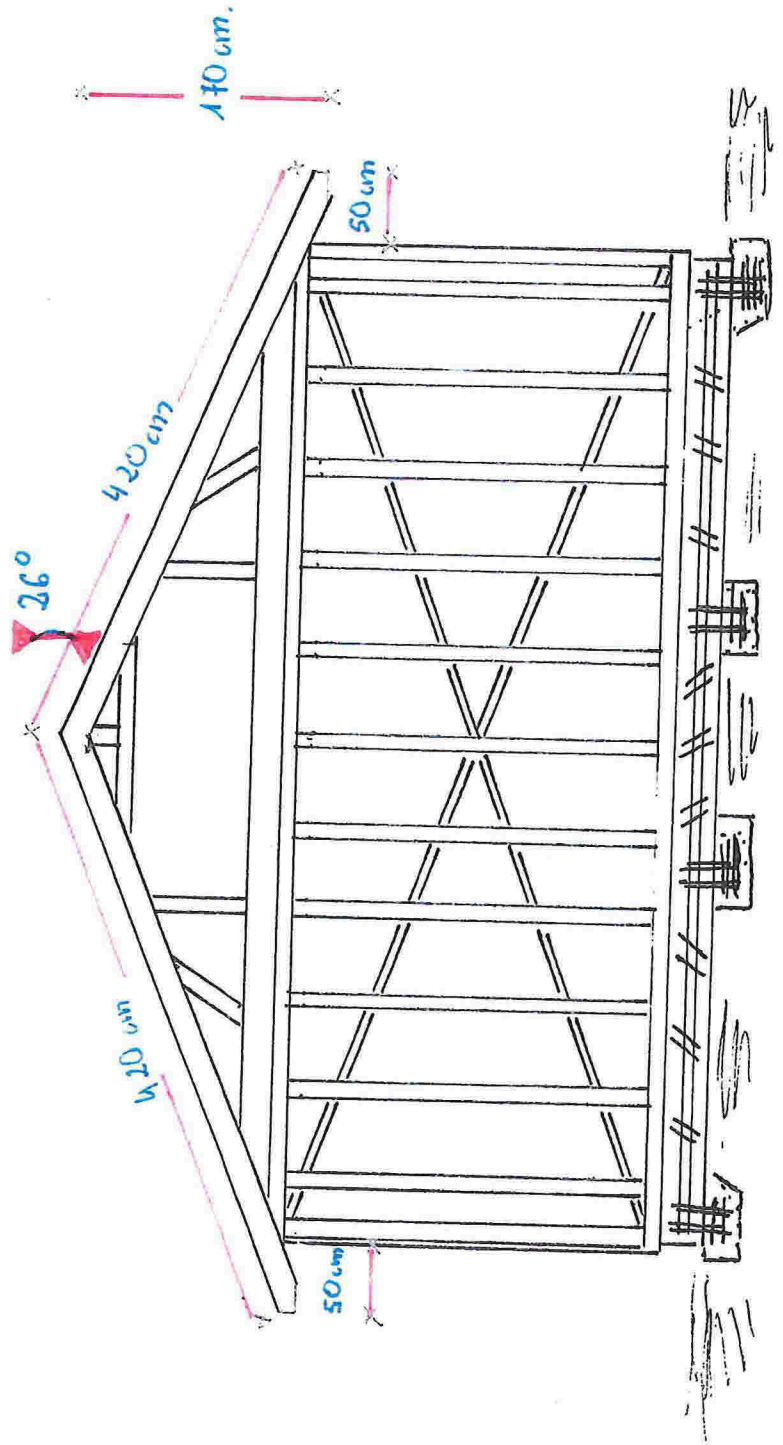
NORD ØST

1:500



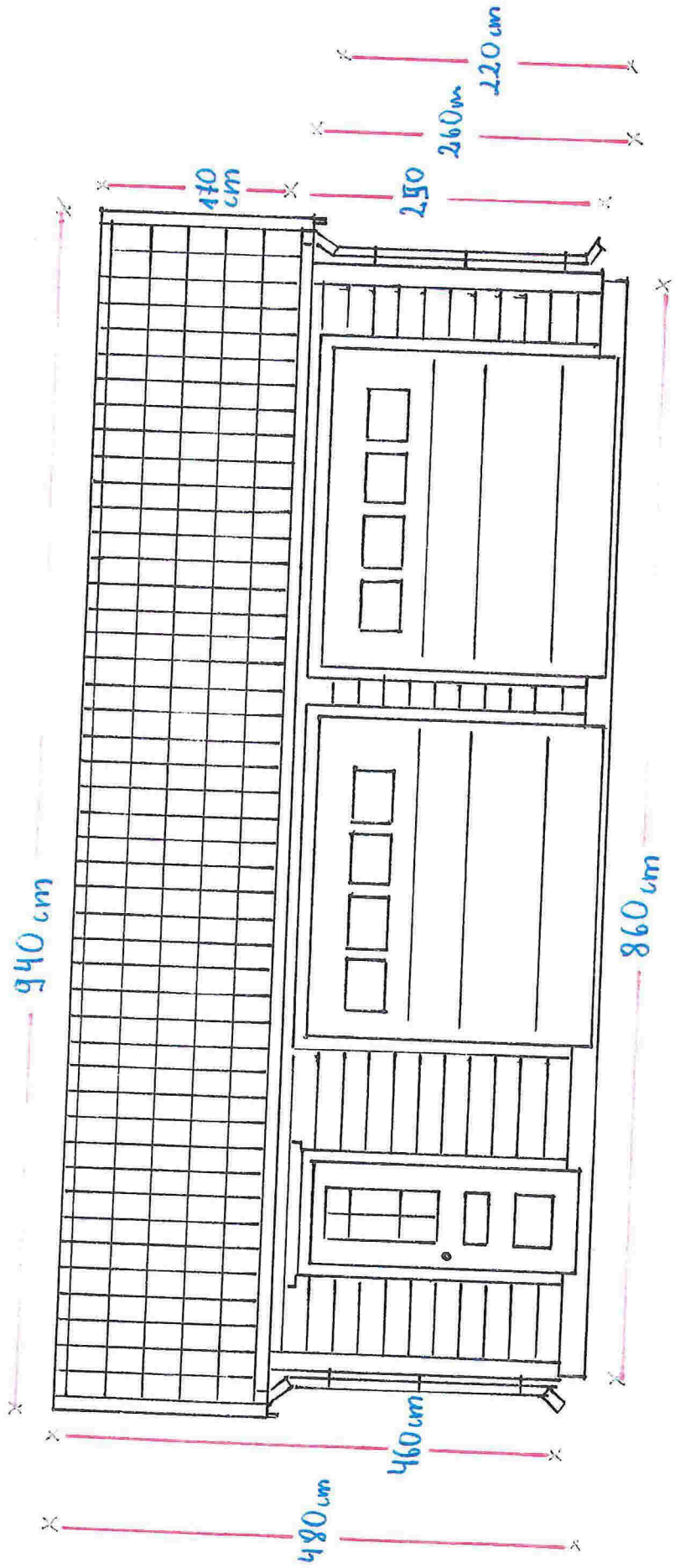
SYD ØST

1:500



Konstruktion einer
 Holztragwerk
 eines kleinen Holzhauses
 mit einem Giebel

1:500



SYD VEST

1:500