




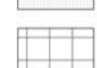




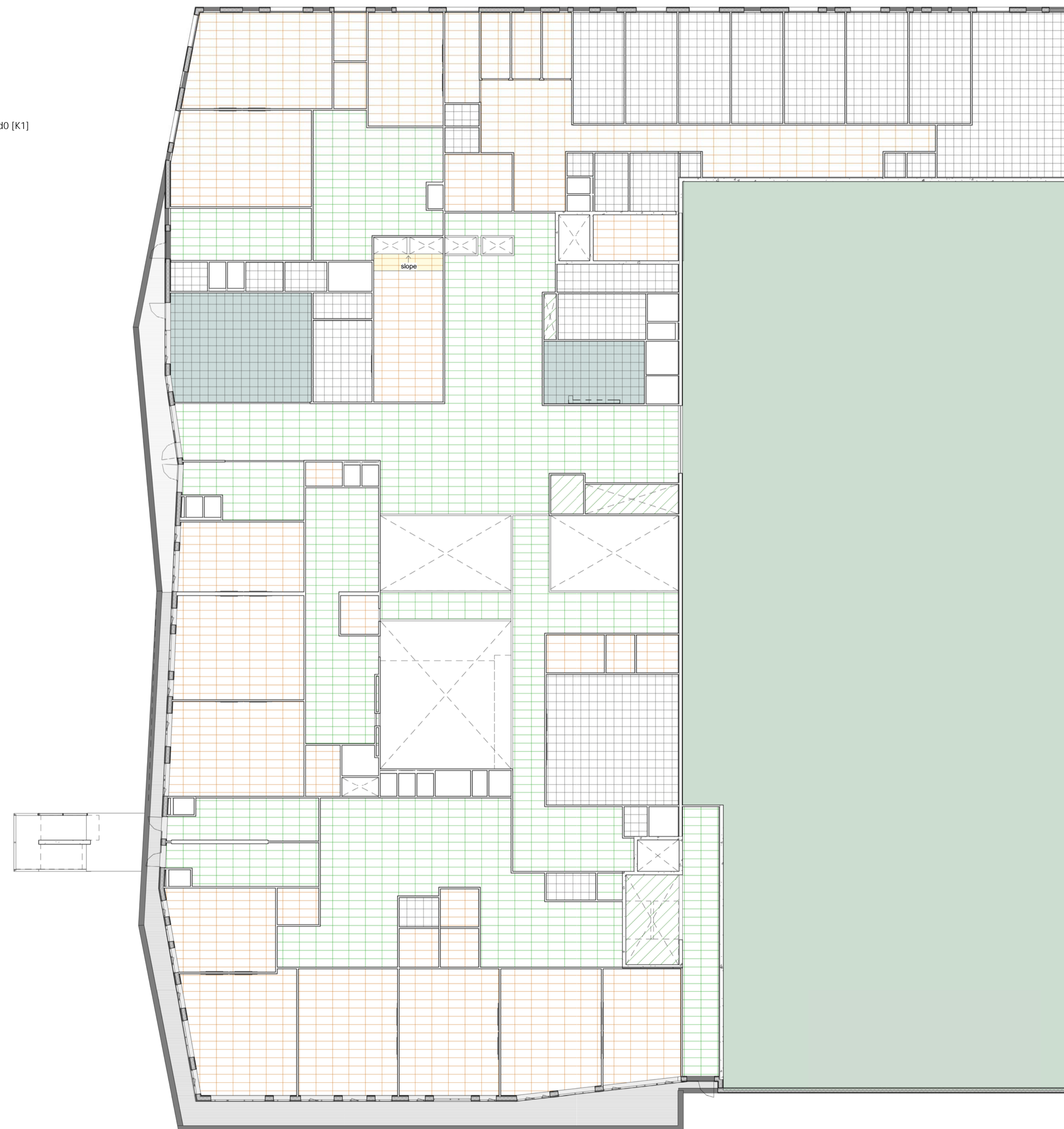


### Himling

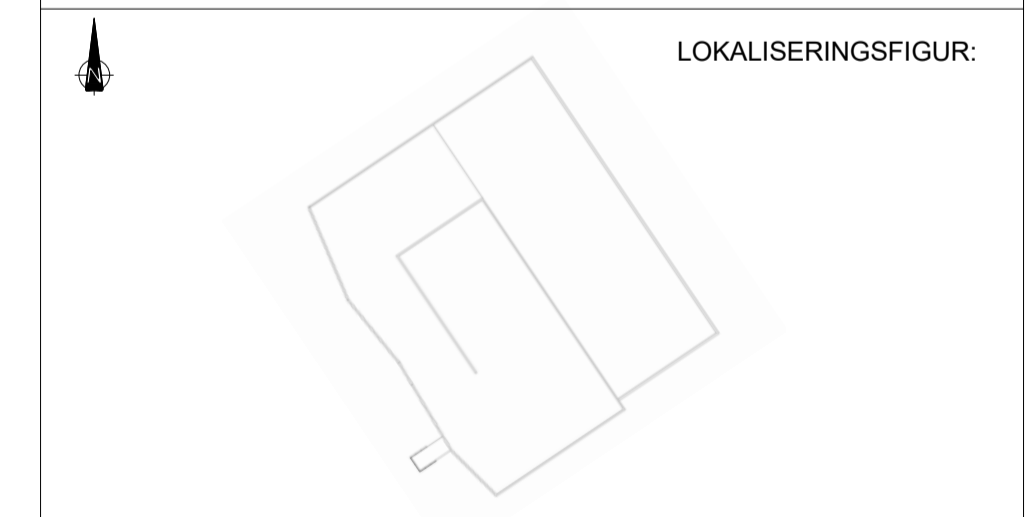
-  Fast gipshimling
-  Fast Våtromshimling
-  System trespilehimling 1200x600mm
-  System trespilehimling 1200x600mm K210,B-s1, d0 [K1]
-  Fast / Akustic Spilehimling 1200x600mm
-  Systemhimling 600x600mm
-  Hygiene systemhimling 600x600mm
-  Støvbinding
-  Trespilehimling ute
-  TRP perforert tak



A	Trespile med brannklasse la til.	18.06.2018	HLM	StreamBim
Rev.	Beskrivelse	Dato	Sign.	Kontroll

Tegningsnummer	Etasje	Fag	Byg.detsnum	Type tegn.	Løpnr.	Rev.
02-A-200-30-002						A

Prosjekteringsgruppen:		TELEFON:
● ARK:	HLM ARKITEKTUR AS HUS ARKITEKTER AS	+47 55 55 04 00 +47 73 10 10 50
○ LARK:	SMEDSVIG LANDSKAPSARKITEKTER	+47 55 21 04 70
○ RB:	MULTICONSULT	
○ RIE:	MULTICONSULT	Multiconsult +47 55 62 37 00
○ RV:	MULTICONSULT	



Fase: Forprosjekt



Tittel:		Godkjent Approver
Alversund Skole		Kontroll prosjekt.
Himlingsplan 02		Sign. Kontroll
		DB PHN
		Filnavn
		xxx
		Dato
		17/06/2018
		Målestokk
		1 : 200
		Kontroll utførende
		Sign. Kontroll

Tegningsnummer	Etasje	Fag	Byg.detsnum	Type tegn.	Løpnr.	Rev.
02-A-200-30-002						A