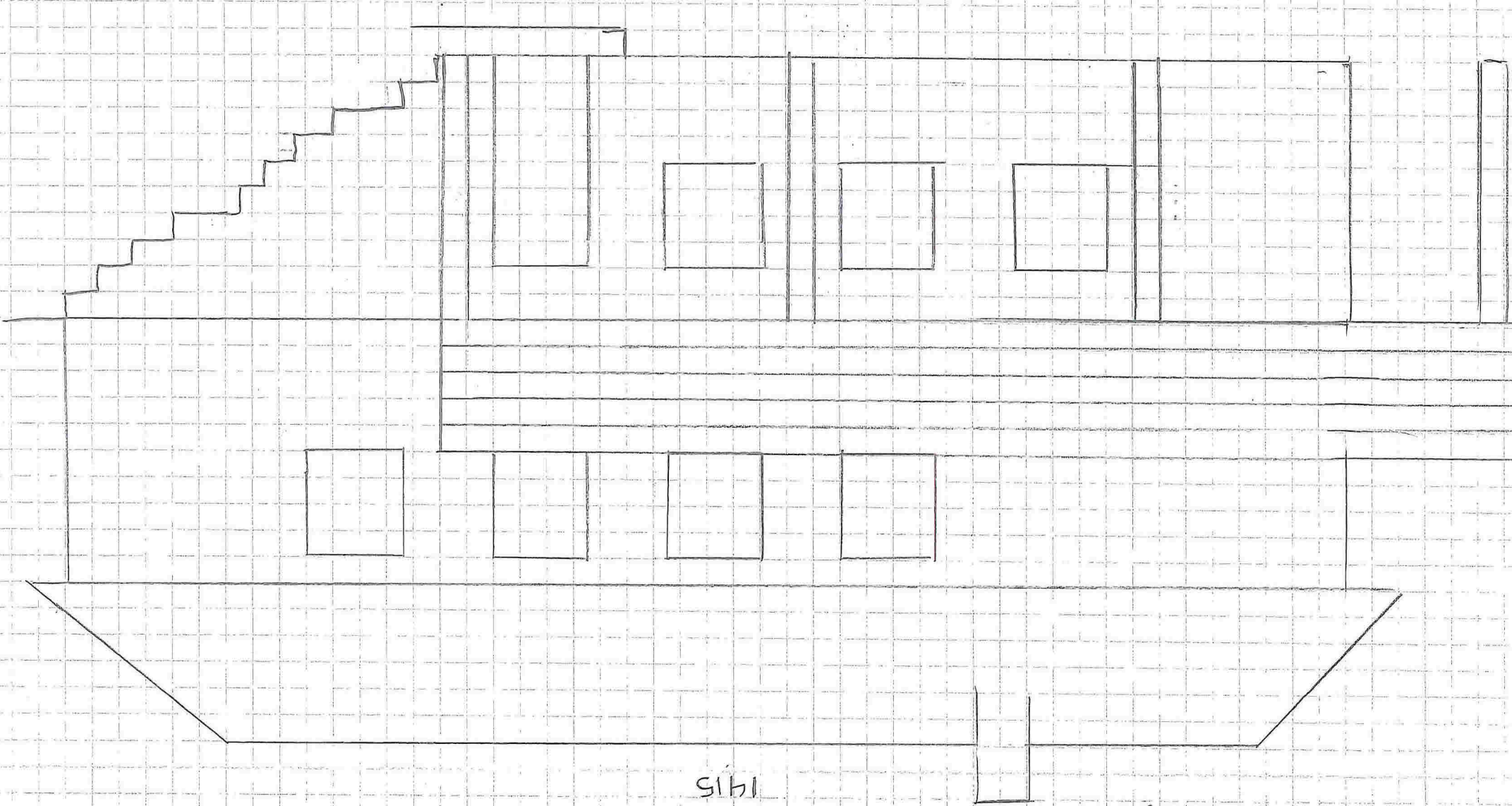
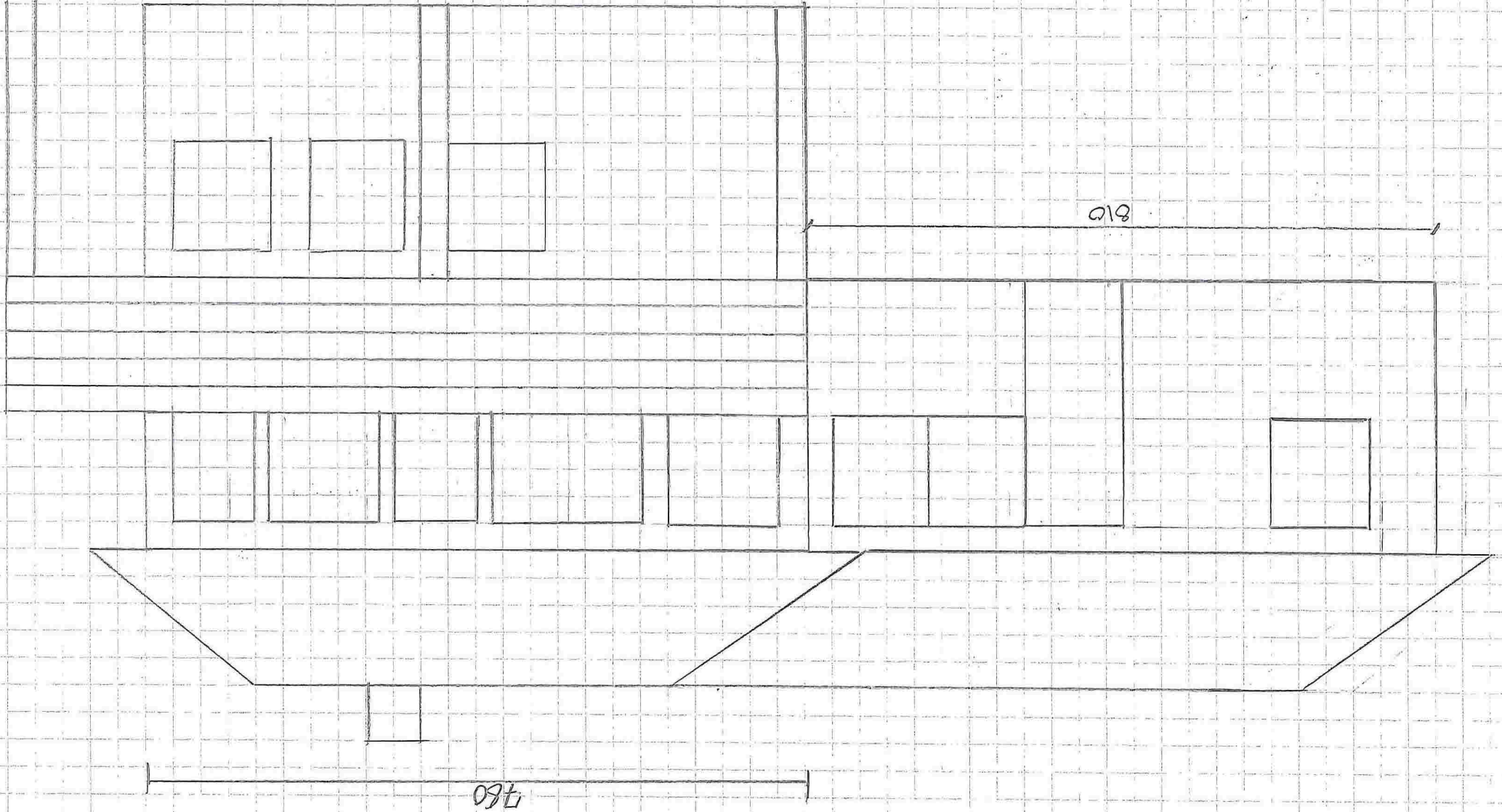


500 300

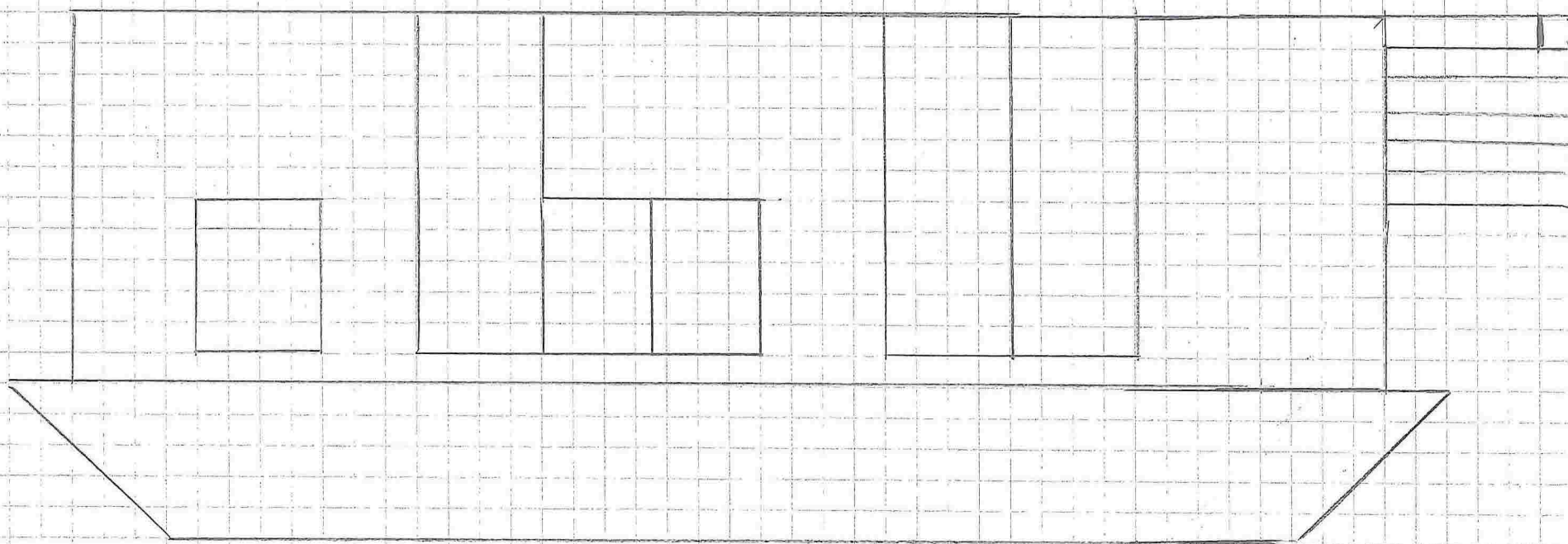


1415

Sør vest



Nordost

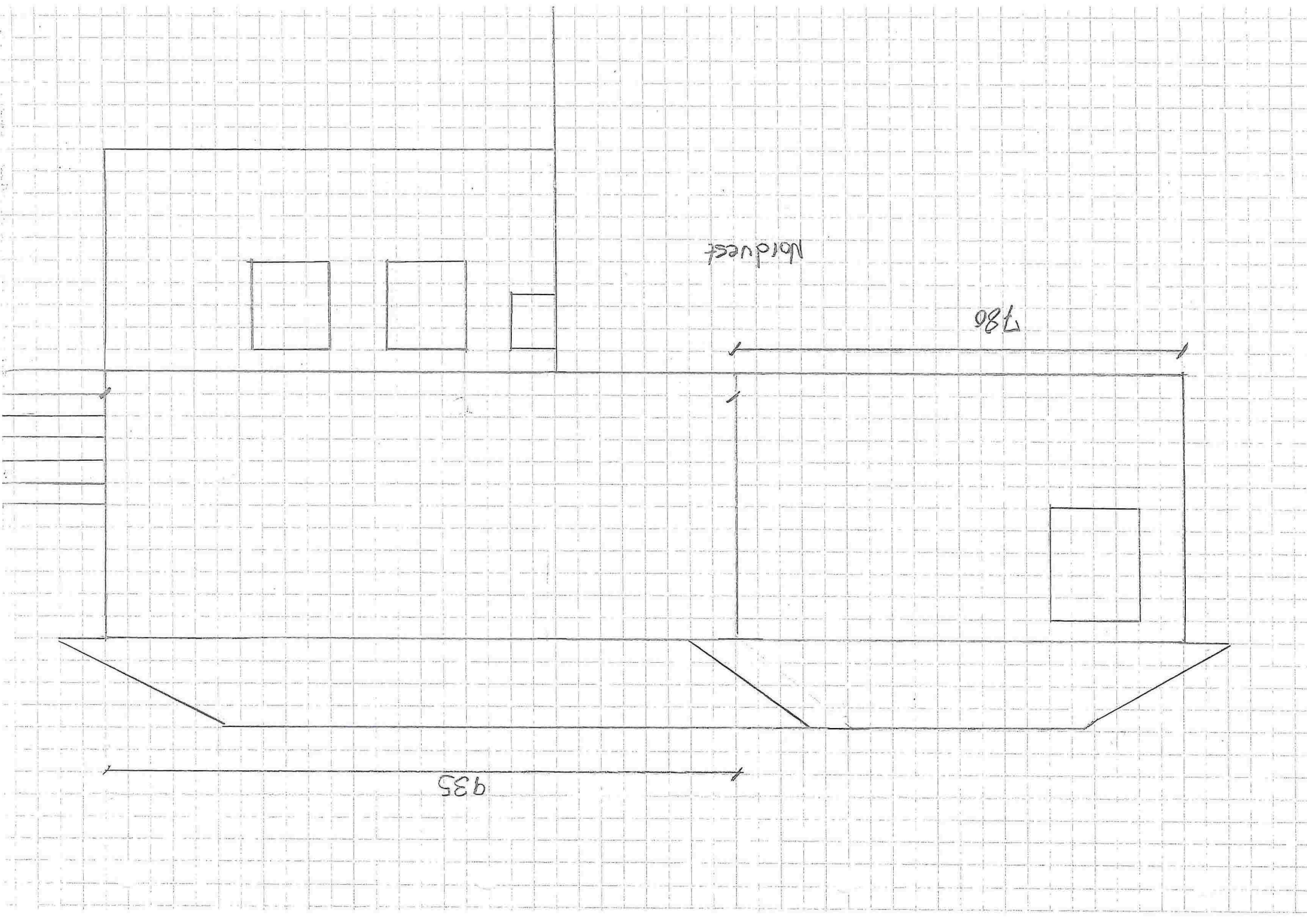


1590

Nordwest

780

935



$$\text{Grundfl\aa} + \text{Terrasse} : 173,6 + 41,5 = 215,1 \text{ m}^2$$

$$\text{Parkering} + 36 \text{ m}^2$$

$$\underline{\underline{251,1 \text{ m}^2}}$$

$$\text{Tomt} = 1282,4 \text{ m}^2$$

$$\text{Tomteutnyttelse 25\%} = 320,6 \text{ m}^2$$