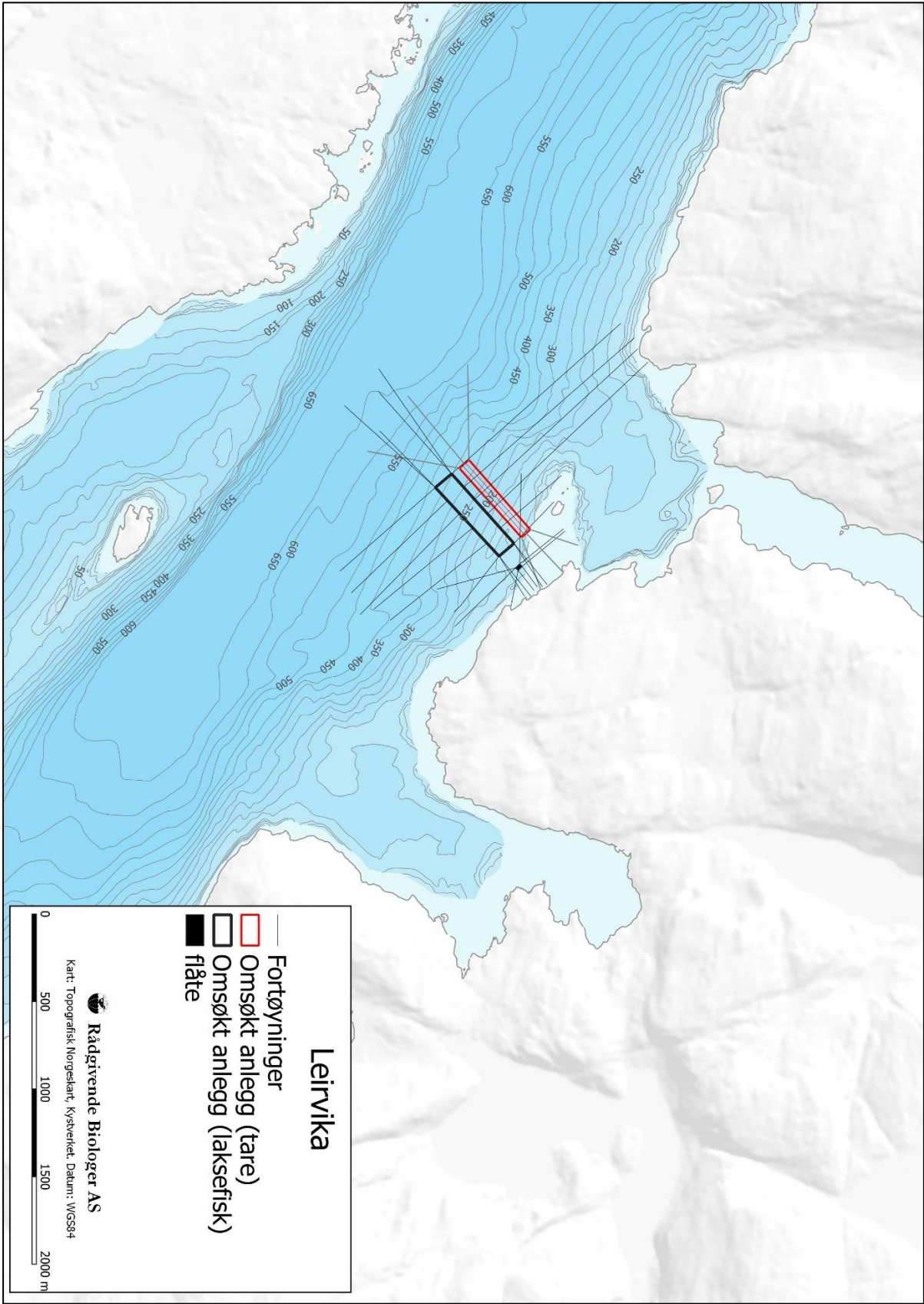
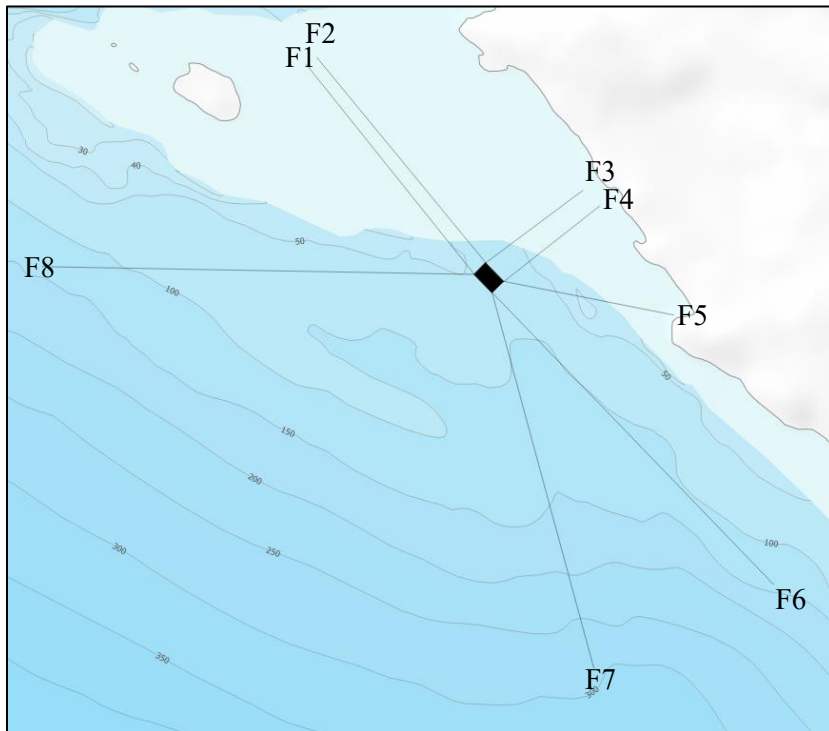


Anleggskonfigurasjon Leirvika 2021



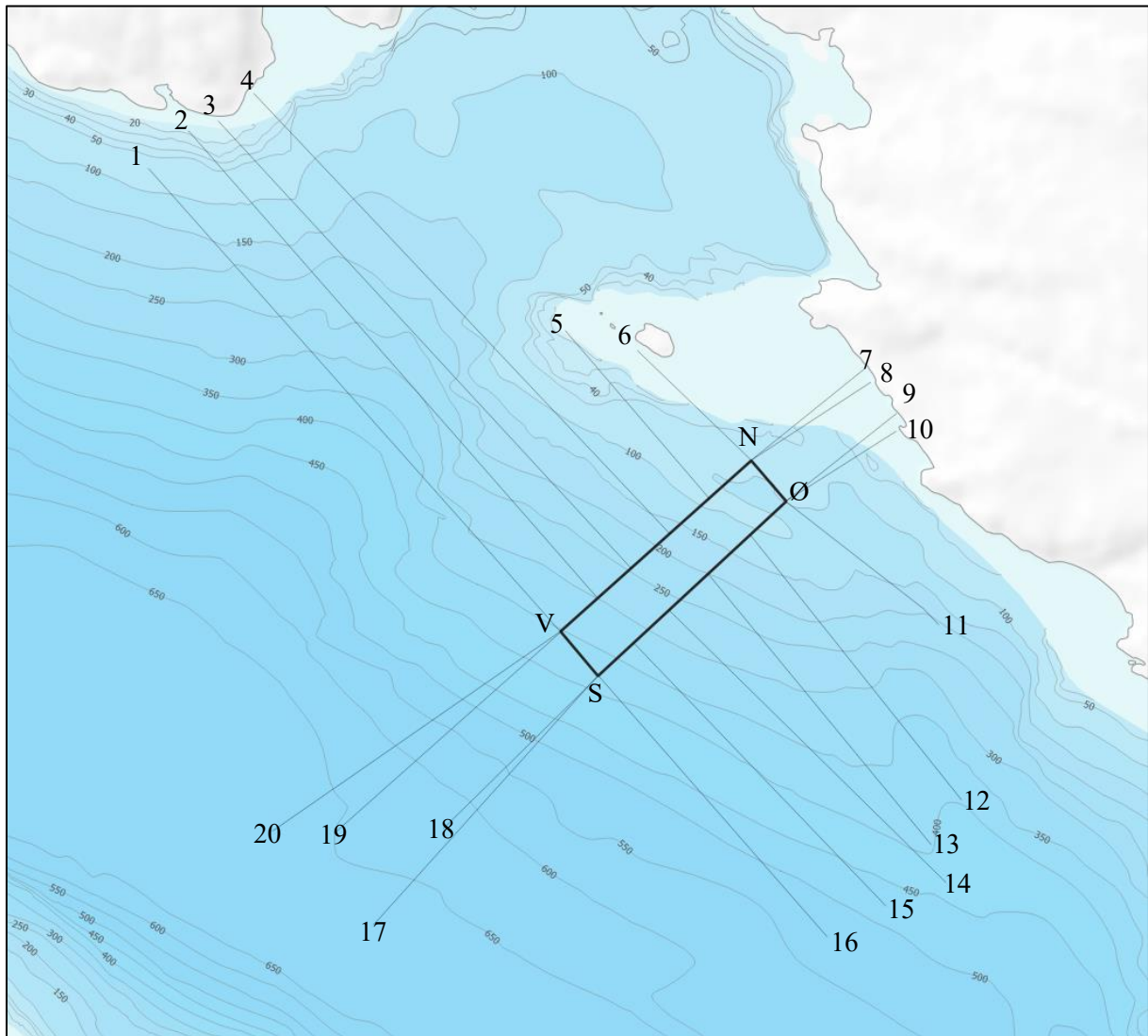
## Flåte



Hjørnepunkt flåte	N	Ø
V	60°44,584'	5°20,877'
N	60°44,592'	5°20,891'
Ø	60°44,580'	5°20,917'
S	60°44,573'	5°20,902'

Bunnfester flåtefortøyninger	N	Ø
F1	60°44,713'	5°20,642'
F2	60°44,718'	5°20,654'
F3	60°44,643'	5°21,014'
F4	60°44,633'	5°21,038'
F5	60°44,565'	5°21,142'
F6	60°44,395'	5°21,293'
F7	60°44,335'	5°21,063'
F8	60°44,574'	5°20,309'

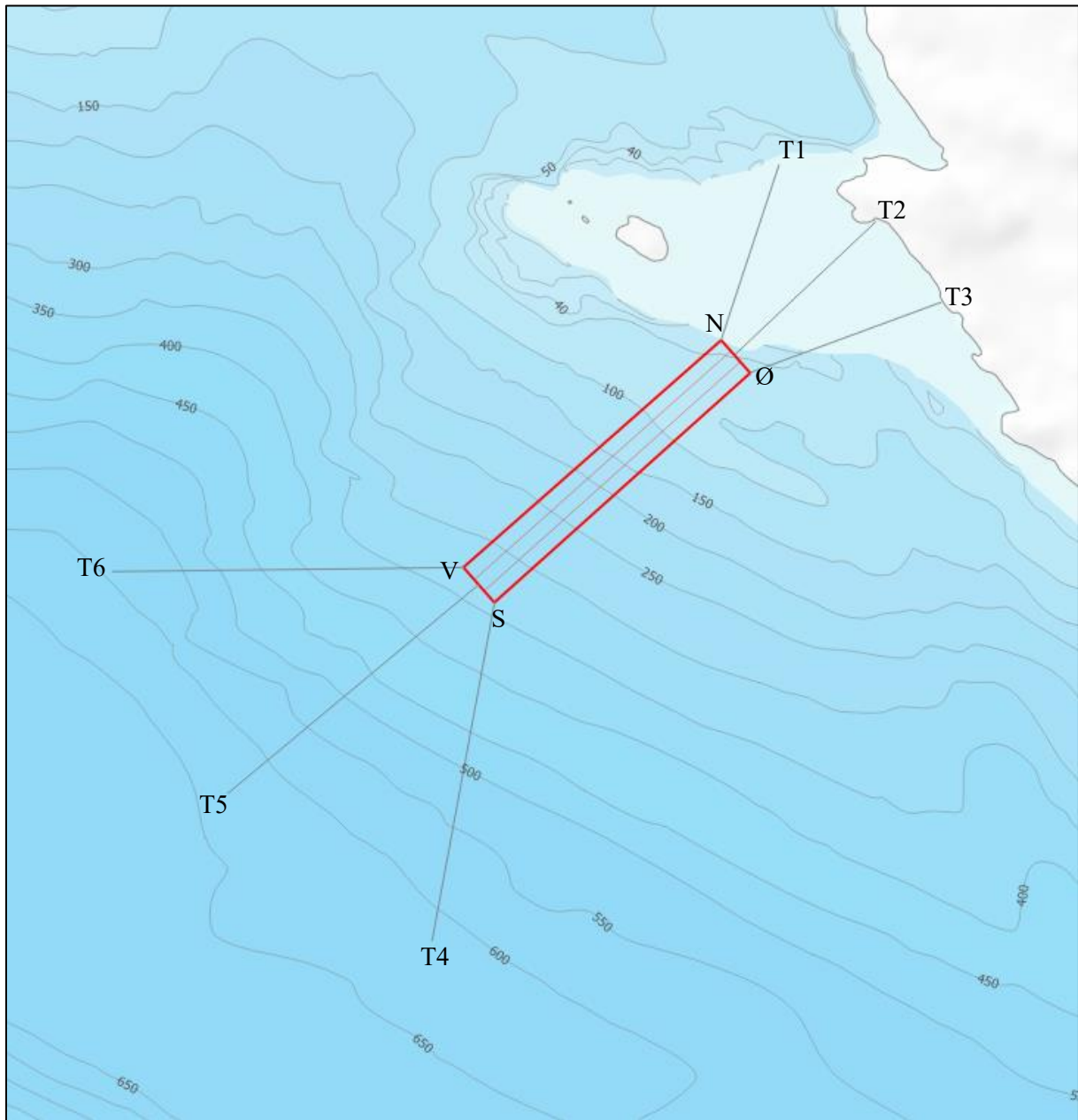
## Anlegg (fisk)



Hjørnepunkt fort. ramme	N	Ø
V	60°44,361'	5°20,333'
N	60°44,565'	5°20,751'
Ø	60°44,521'	5°20,836'
S	60°44,311'	5°20,427'

Bunnfester fortøyninger ramme	N	Ø
1	60°44,853'	5°19,333'
2	60°44,898'	5°19,416'
3	60°44,910'	5°19,484'
4	60°44,944'	5°20,427'
5	60°44,697'	5°20,307'
6	60°44,679'	5°20,478'
7	60°44,673'	5°20,994'
8	60°44,658	5°21,013'
9	60°44,625'	5°21,077'
10	60°44,606'	5°21,076'
11	60°44,392'	5°21,199'
12	60°44,196'	5°21,276'
13	60°44,145'	5°21,211'
14	60°44,104'	5°21,250'
15	60°44,073'	5°21,117'
16	60°44,033'	5°20,984'
17	60°44,019'	5°19,946'
18	60°44,133'	5°20,092'
19	60°44,121'	5°19,844'
20	60°44,118'	5°19,700'

## Anlegg (tare)



Hjørnepunkt ramme toreanlegg	N	Ø
V	60°44,409'	5°20,339'
N	60°44,612'	5°20,657'
Ø	60°44,584'	5°20,710'
S	60°44,381'	5°20,299'

Bunnfester fort. toreanlegg	N	Ø
T1	60°44,760'	5°20,739'
T2	60°44,716'	5°20,907'
T3	60°44,653'	5°21,028'
T4	60°44,098'	5°20,222'
T5	60°44,211'	5°19,862'
T6	60°44,392'	5°19,646'