

Tomannsbolig for Mjuebakkane AS
 På Tomt.nr3og 4
 Gnr.9.Bnr.28
 i Meland kommune
 Tegn.Byggn.Steinar Thunold
 M.1:200



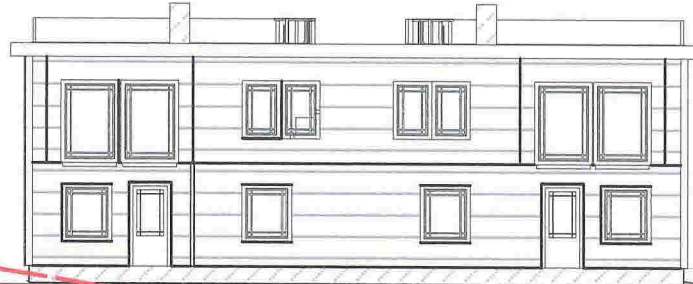
Sør-Vest

31-January-2018

ET

Grense

Grense



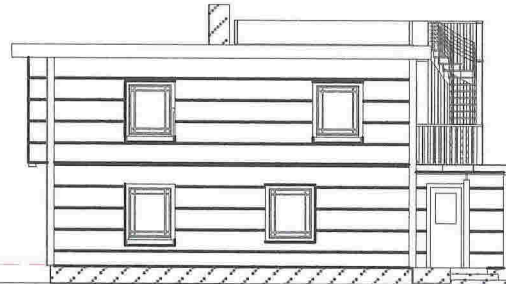
Topp grunnmur
 +47,5moh

+53,0moh
+52,0moh
+51,0moh
+50,0moh
+49,0moh
48,0moh
47,5moh
47,0moh
46,0moh
45,0moh
44,0moh

Grense

Grense

Sør-Øst



Topp grunnmur
 +47,5moh

+53,0moh
+52,0moh
+51,0moh
+50,0moh
+49,0moh
48,0moh
47,5moh
+46,0moh
+45,0moh
+44,0moh

1

2

3

4

Tomannsbolig for Mjuekabbakane AS
 På Tomt.nr3 og 4
 Gnr.9.Bnr.28
 i Meland kommune
 Tegn.Byggm.Steinar Thunold
 M.1:200



Nord-Øst

Grense

Grense

E II



Topp grunnmur
 +47,5moh

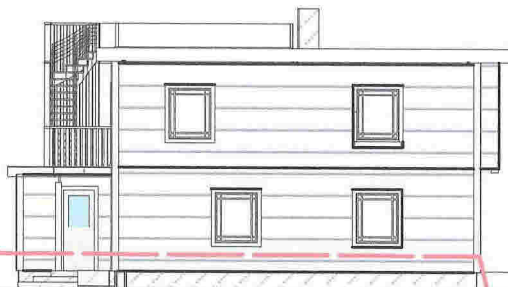
+52,0moh
+51,0moh
+50,0moh
+49,0moh
+48,0moh
+47,5moh
+47,0moh
+46,0moh

17000mm

Grense

Nord-Vest

Grense



Topp grunnmur
 +47,5moh

+54,0moh
+53,0moh
+52,0moh
+51,0moh
+50,0moh
+49,0moh
+48,0moh
47,5moh
47,0moh
46moh
45moh

9400mm

1

2

3

4

1

2

3

4

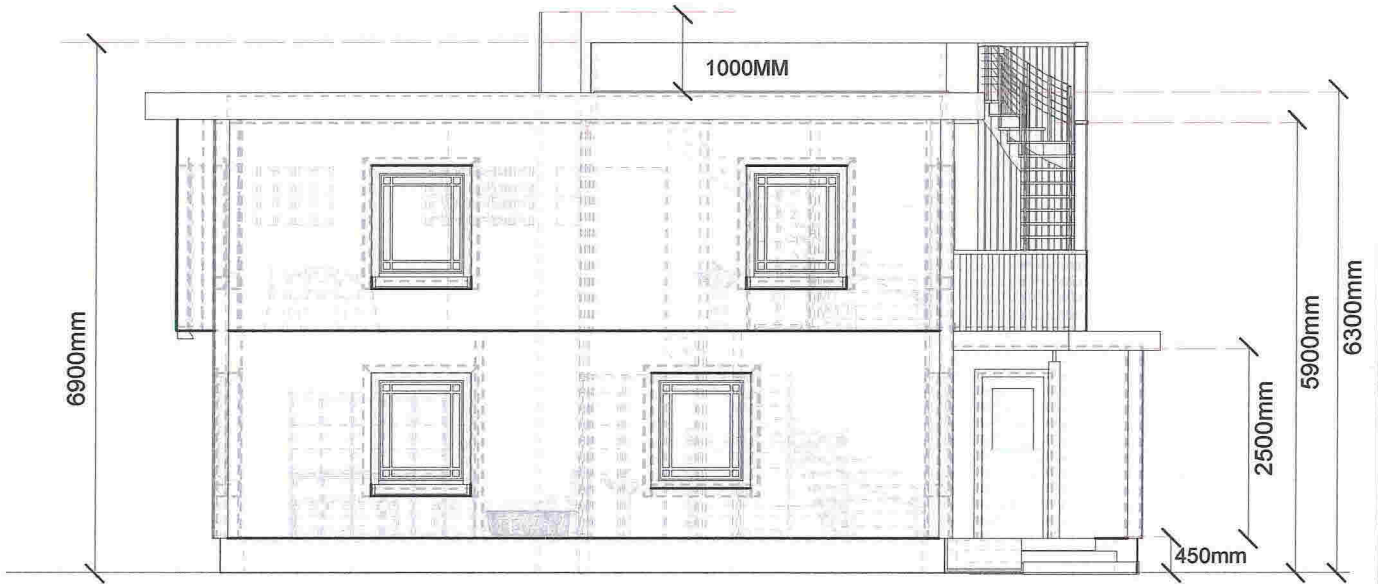
Tomannsbolig for Mjuebakkane AS
 På Tomt.nr3-4
 Gnr.9.Bnr.28
 i Meland kommune
 Tegn.Byggm.Steinar Thunold
 M.1:100



E III

A

Snitt



B

C

1

2

3

4