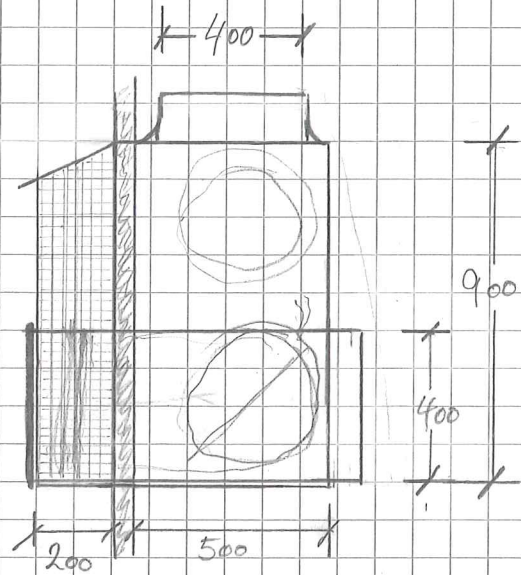
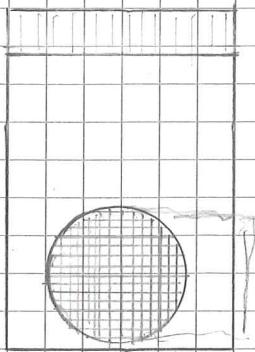
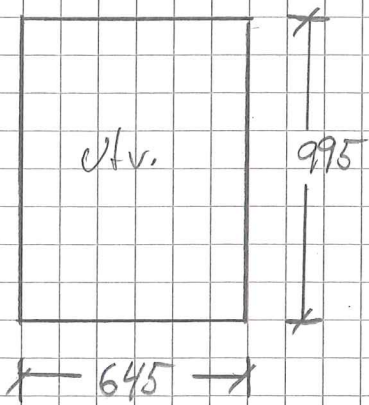


ρ_{luft} $0,3 \text{ m}^2 \approx 2 \text{ m/s}$

$0,15 \text{ m}^2$ $a = 900$ $b = 165$

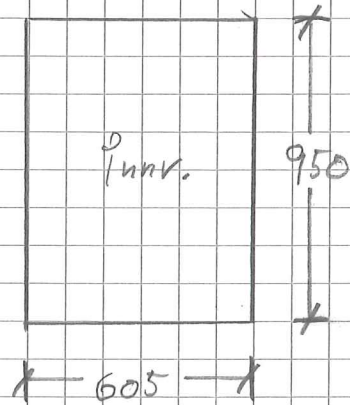


Etage : Nøyaktige karm mål



Dybde innkant i karm = 90 mm

Ingen sløskant



Dybde innkant i karm = 70 mm

Pistikk H.S.

Løse vinkler for innfestning.