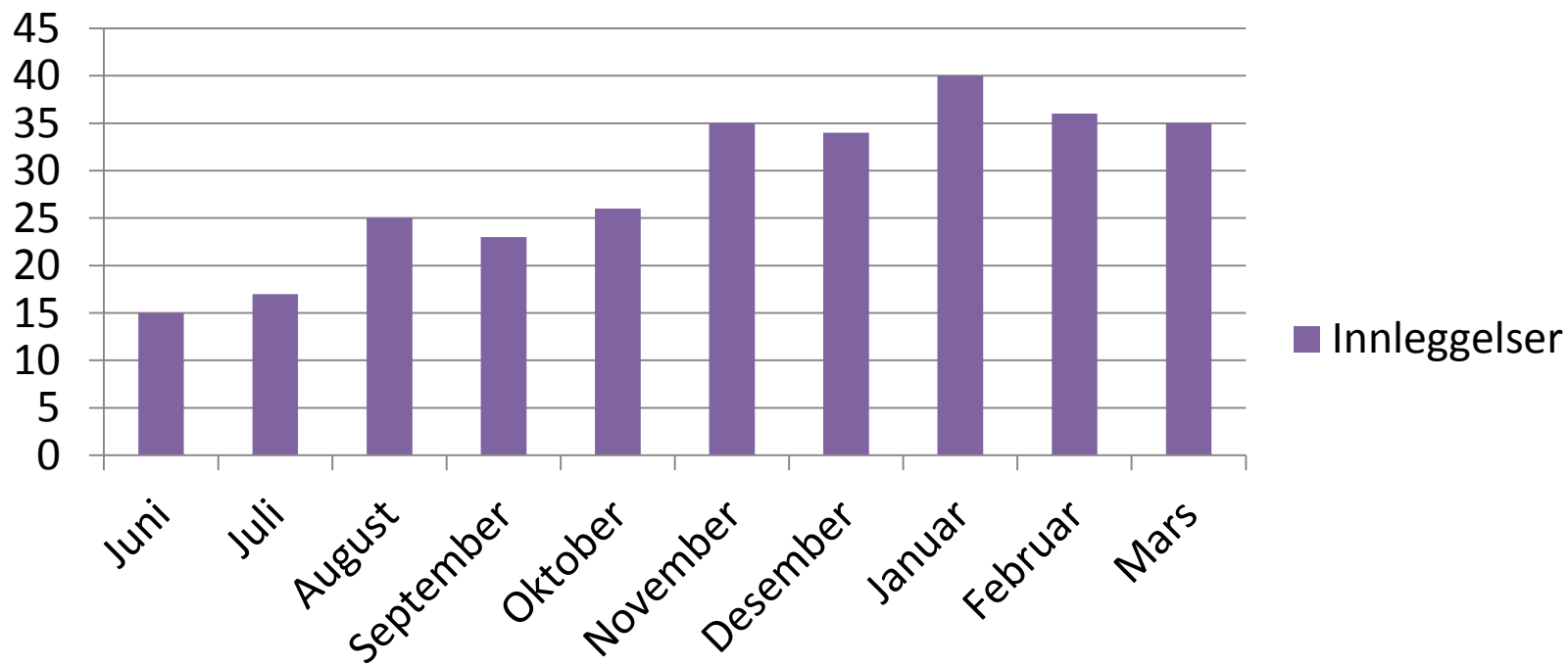


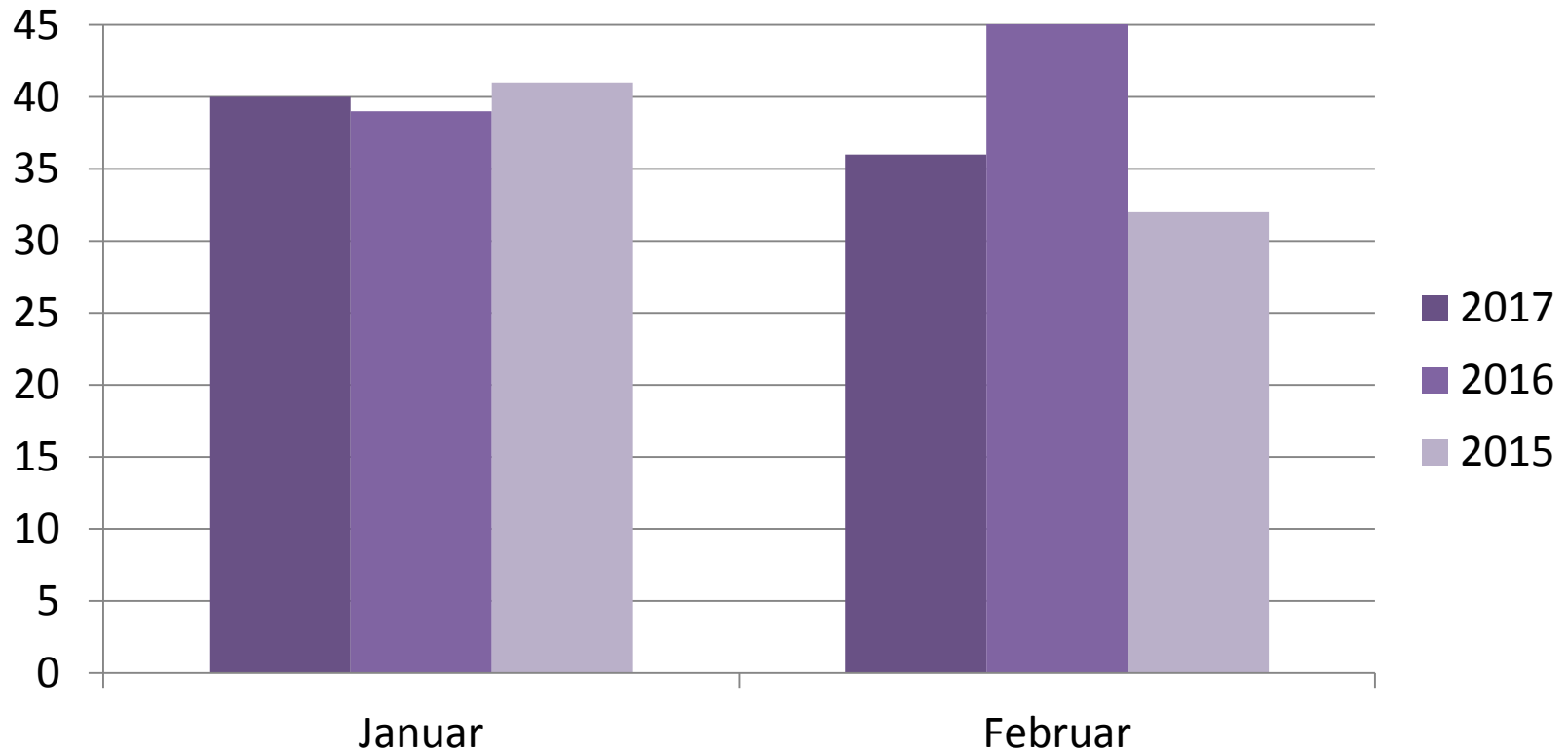
Innleggelser NØHD

OBS TIL NÅ I MARS 29.03

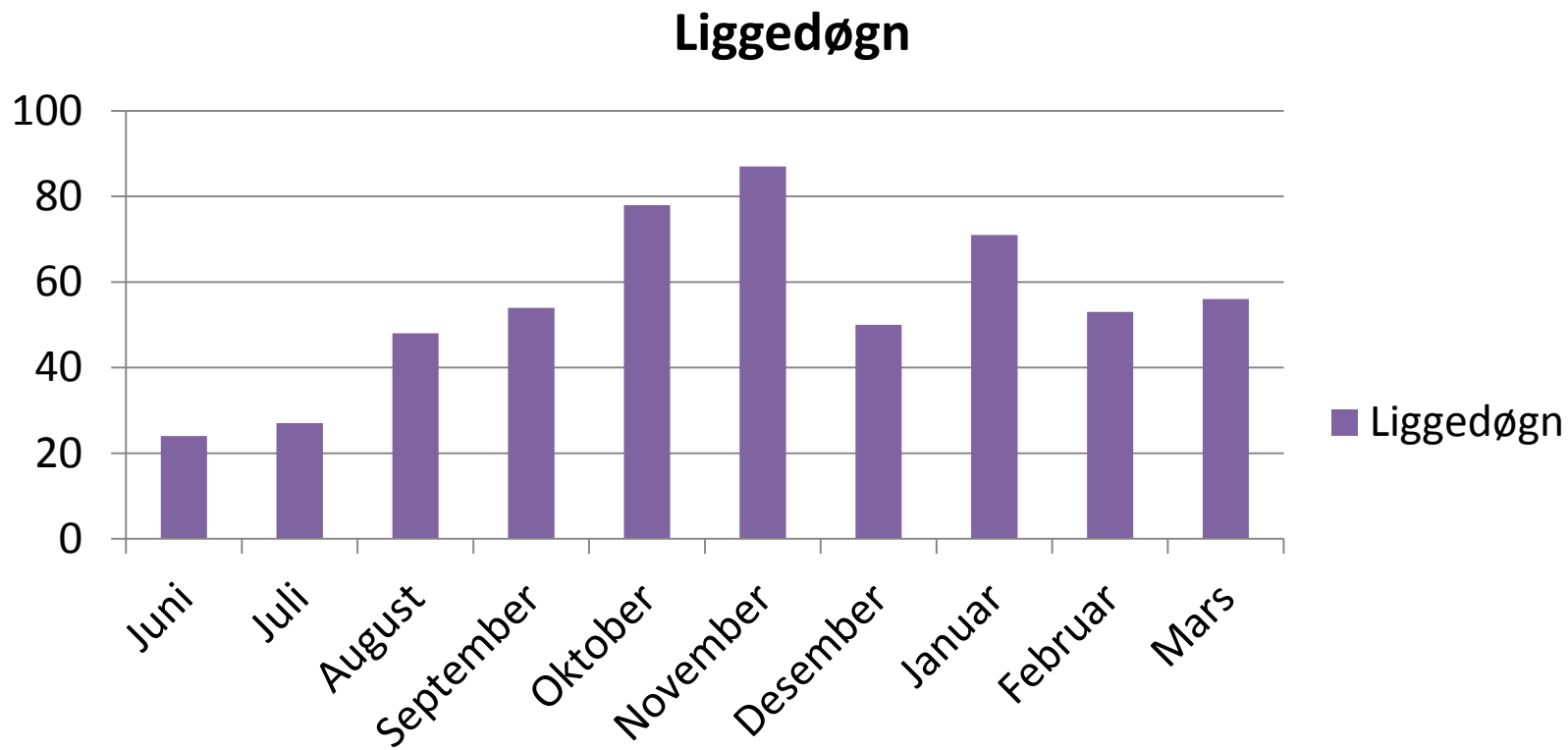
Innleggelser



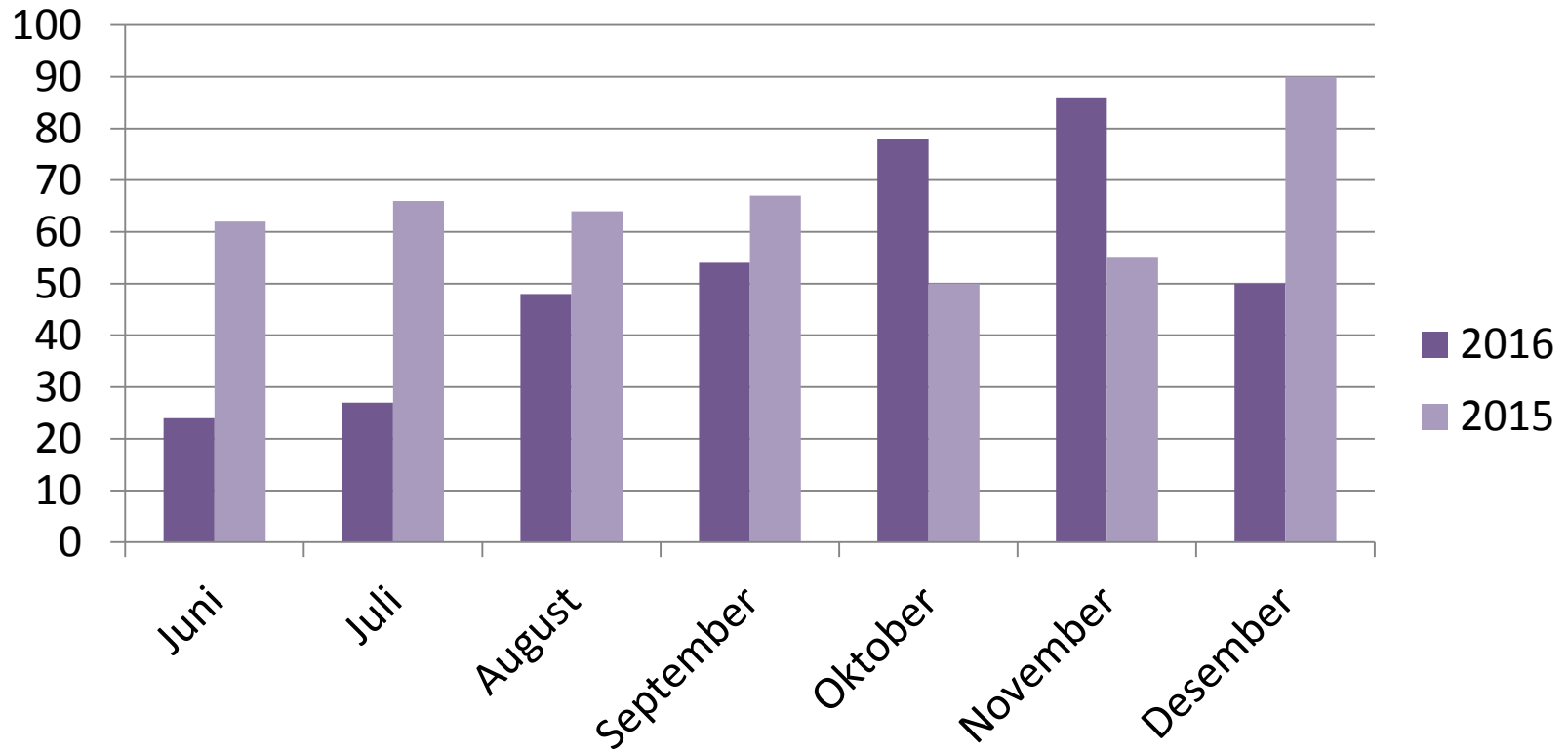
Innleggelser NØHD 2017



Liggedøgn NØHD

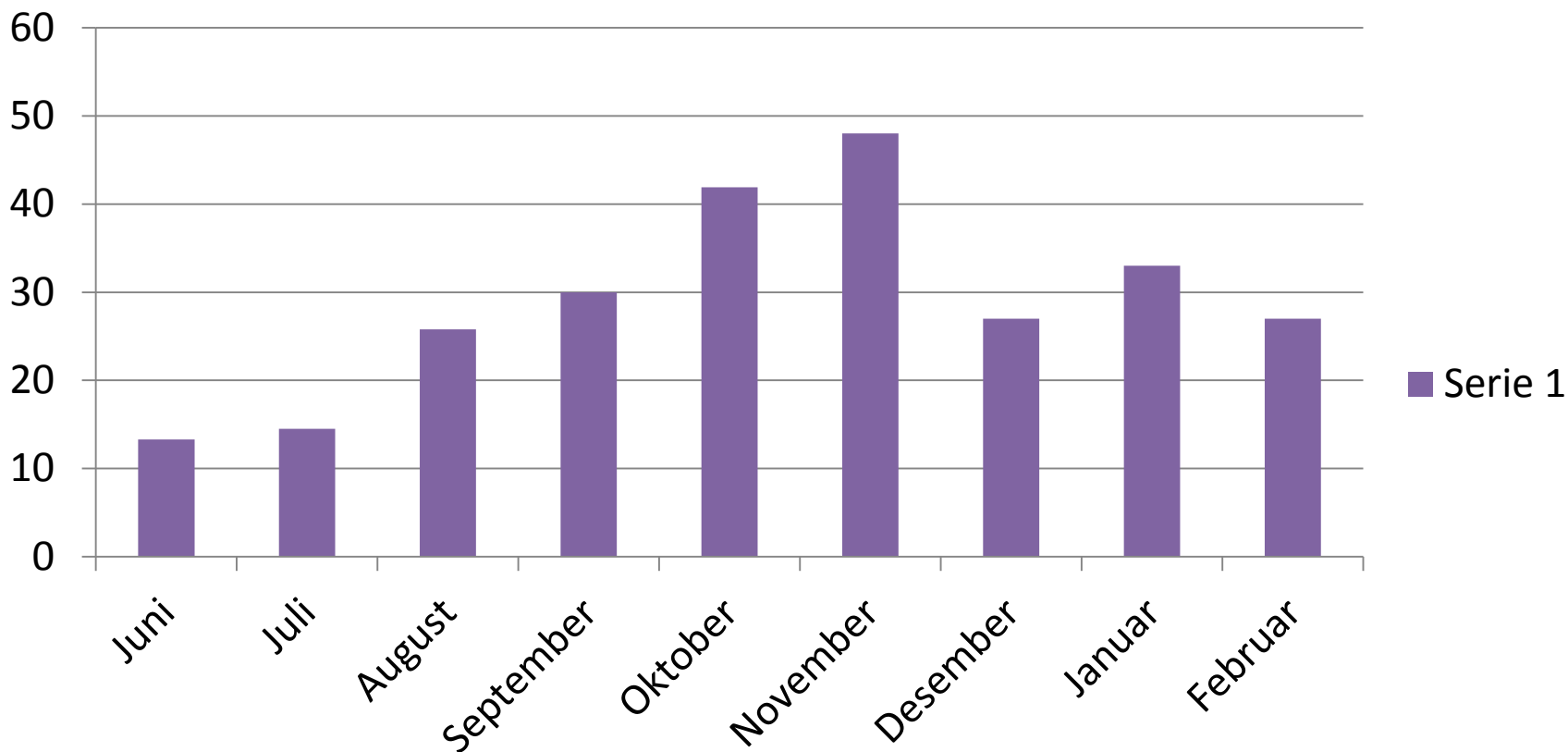


Liggedøgn NØHD



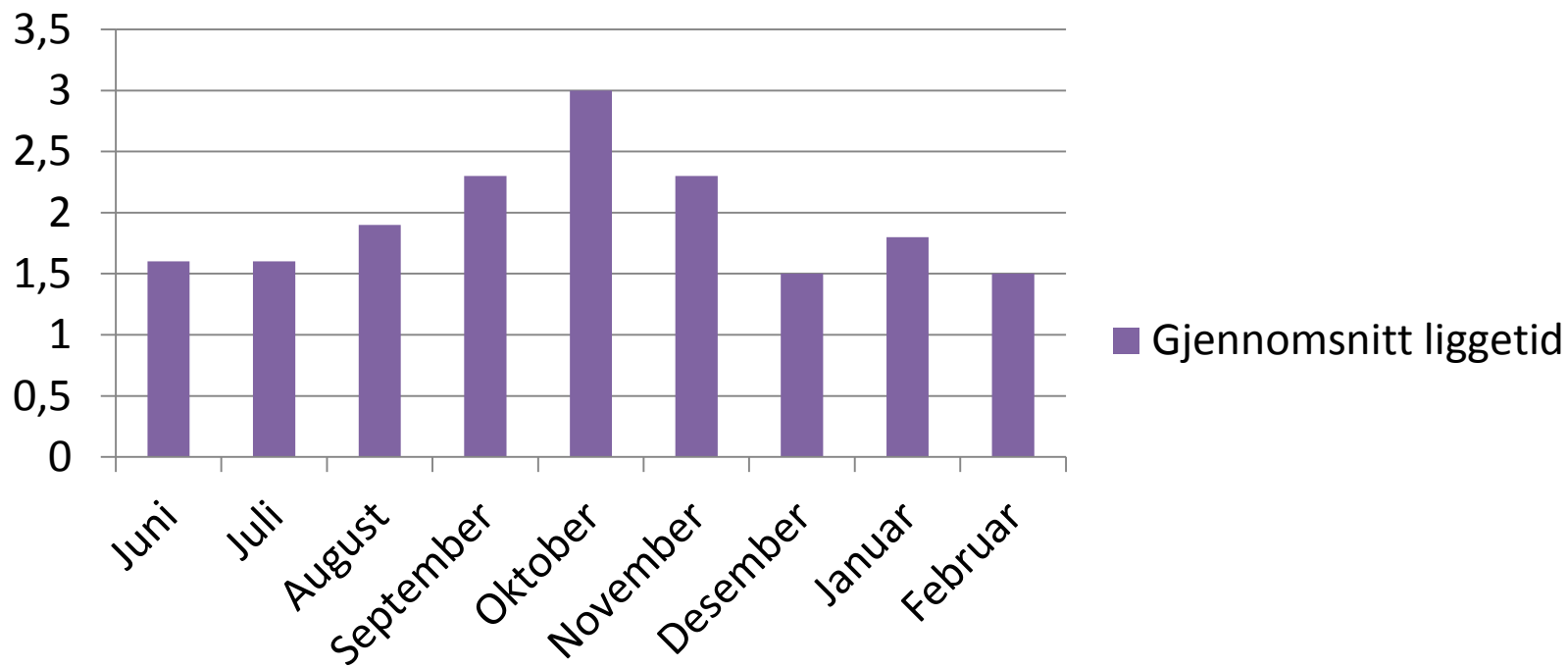
Prosent belegg NØHD

Serie 1

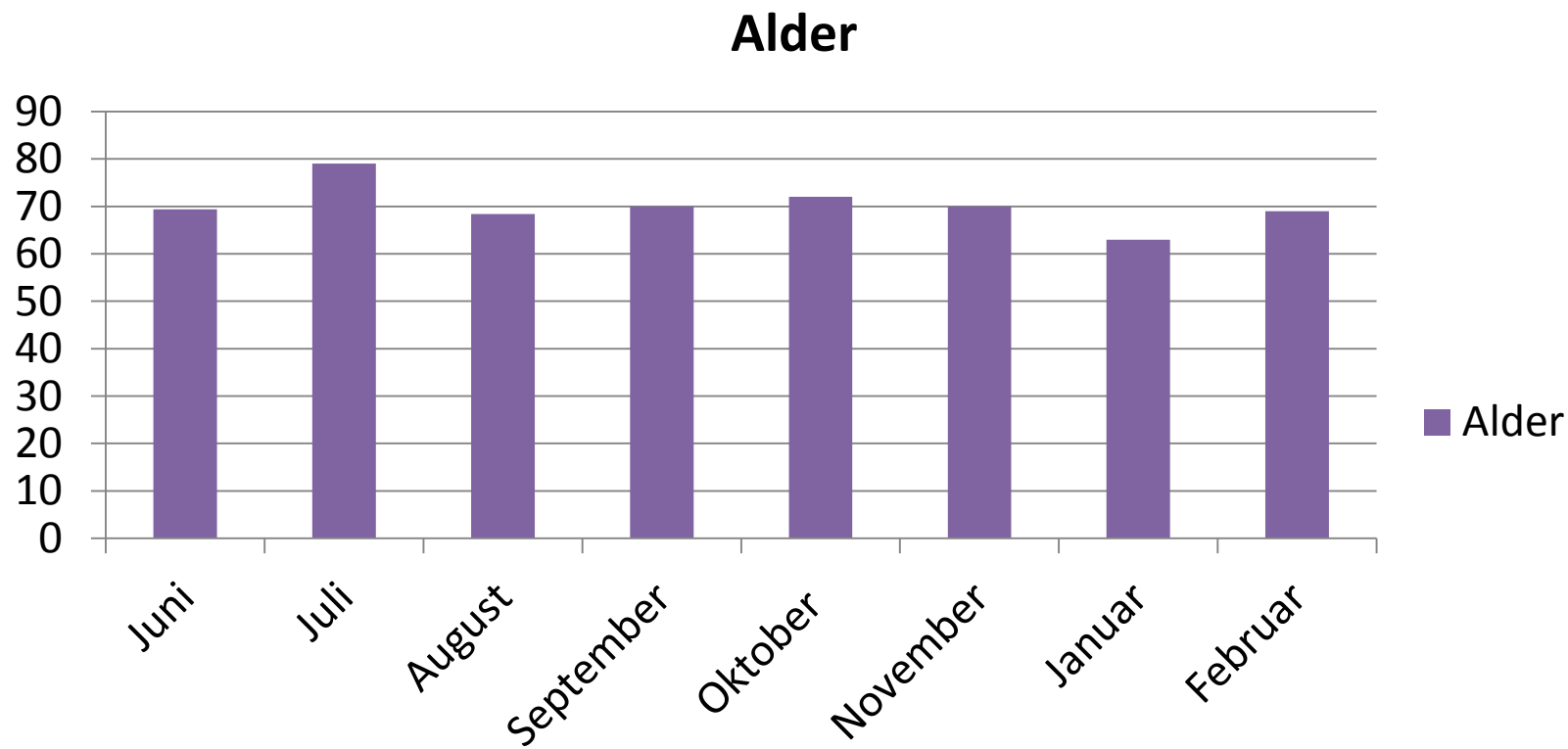


Gjennomsnitt liggetid NØHD

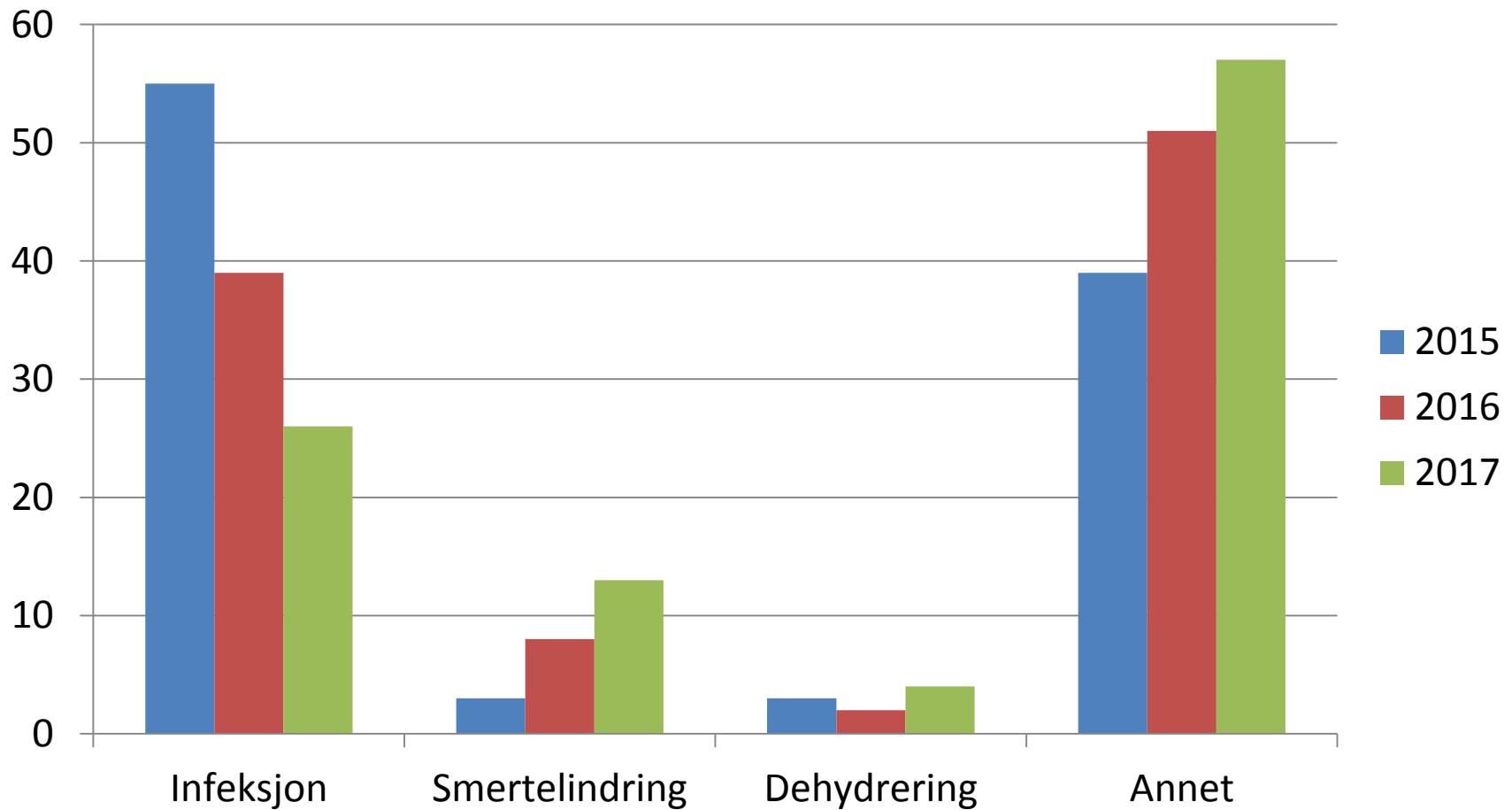
Gjennomsnitt liggetid



Gjennomsnittlig alder NØHD

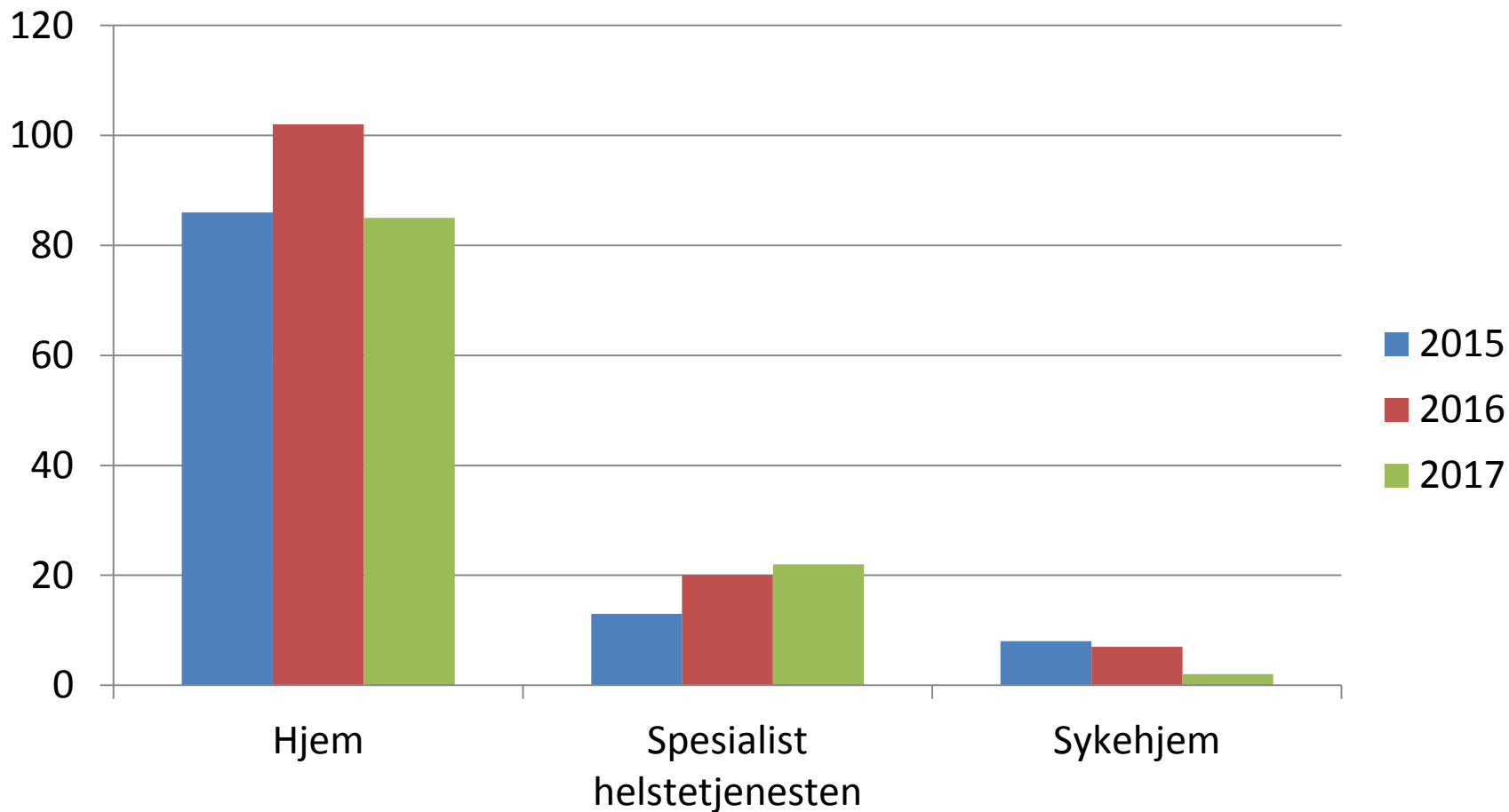


Pasienter på posten ut fra diagnose % januar og februar




Hvor sendes pasienter?

Desember, januar og februar



- Januar til april 2017
- Pasienter 148 / 37 pr mnd
- Pasienter 1,3 innleggelser pr dag
- Belegg: 41 %

Kommune  <small>Nordhordland ØHD</small>	Antall pasienter	Antall liggedøgn	Innleggelser pr 1000 innbygger	
Lindås	64	135	4,3	14820
Meland	27	78	3,7	7347
Radøy	15	29	3,0	5003
Austrheim	8	12	2,8	2833
Osterøy	18	20	2,3	7674
Masfjorden	7	10	4,1	1696
Gulen	4	5	1,7	2305
Modalen	0	0	0	383
Fedje	1	2	1,8	569
Andre	4	4		