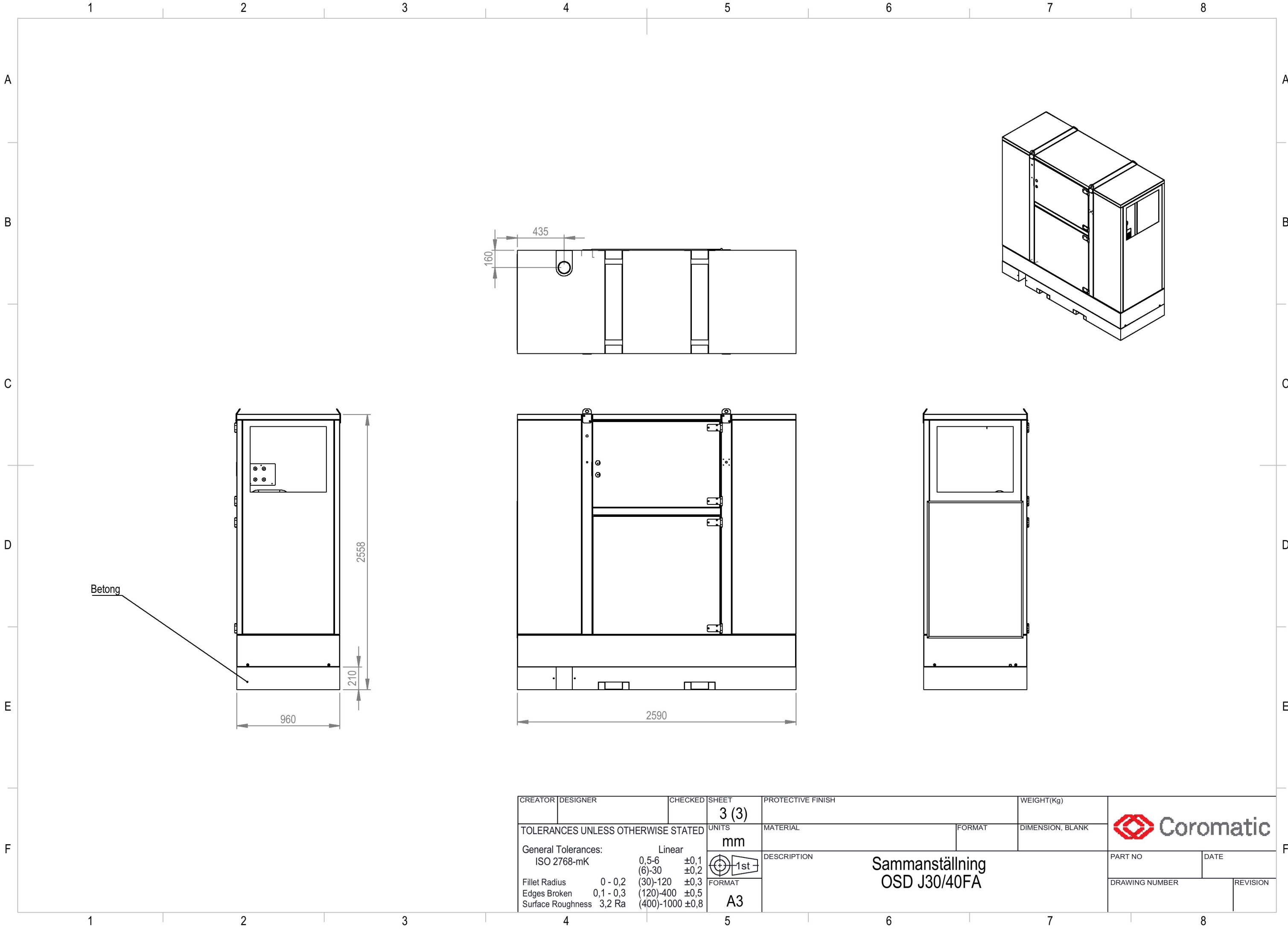


© 2016 COROMATIC - THIS DOCUMENT IS THE PROPERTY OF COROMATIC NORD AB AND IT IS SUPPLIED IN CONFIDENCE AND MUST NOT BE REPRODUCED WITHOUT PERMISSION IN WRITING FROM THE COPYRIGHT HOLDERS. CONTRAVENTION WILL LEAD TO PROSECUTION.



| | | | | | | | |
|------------------------------------|----------|---------|---|--|----------------------------|----------------|----------|
| CREATOR | DESIGNER | CHECKED | SHEET 3 (3) | PROTECTIVE FINISH | WEIGHT(Kg) | | |
| TOLERANCES UNLESS OTHERWISE STATED | | | UNITS mm | MATERIAL | FORMAT DIMENSION, BLANK | | |
| General Tolerances: ISO 2768-mK | | | Linear 0,5-6 ±0,1 (6)-30 ±0,2 (30)-120 ±0,3 (120)-400 ±0,5 (400)-1000 ±0,8 | DESCRIPTION Sammanställning OSD J30/40FA | PART NO DATE | | |
| Fillet Radius 0 - 0,2 | | | FORMAT A3 | | | DRAWING NUMBER | REVISION |
| Edges Broken 0,1 - 0,3 | | | | | | | |
| Surface Roughness 3,2 Ra | | | | | | | |

Last Saved: 2018-03-21 08:03:23