




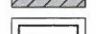
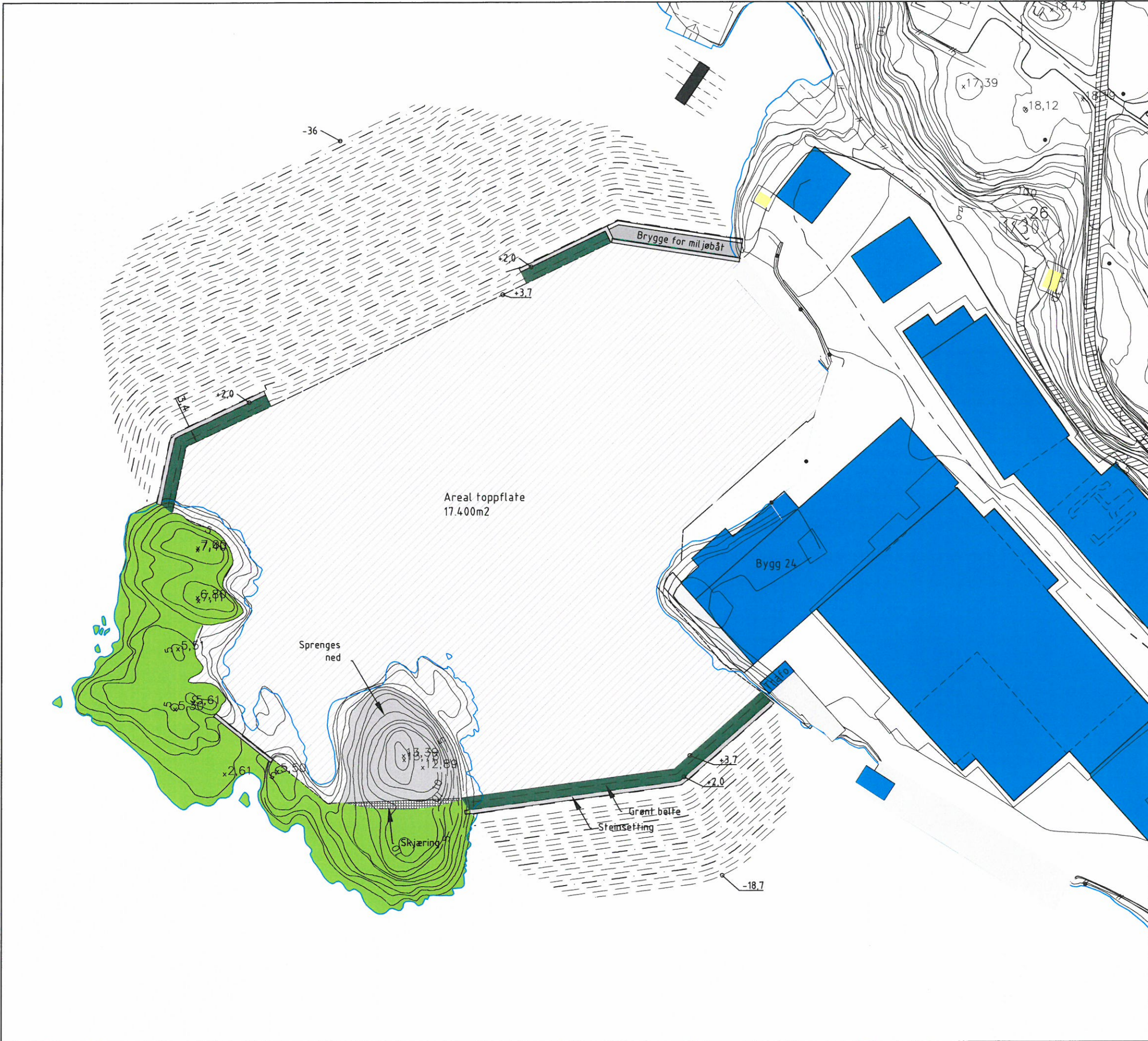


- TEGNFORKLARING**
-  Topplate fylling
  -  Steinsetting
  -  Granitete
  -  Skjæring
  -  Nedsprengt
  -  Hus

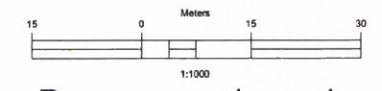
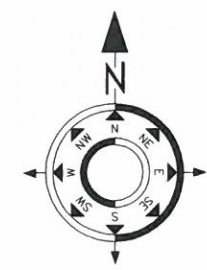
Nabovarsel  
VEDLEGG D-1

|      |  |                       |                       |                   |                |
|------|--|-----------------------|-----------------------|-------------------|----------------|
| 0    | Søknad om tiltak                                     | 02.10.2013            | HBH                   | BS                | BS             |
| Rev. | Beskrivelse  | Dato                  | Tegn.                 | Kontr.            | Godk.          |
|      | Frank Mohn Flatøy AS<br>Utfylling ved Gudmundsholmen | 17.9.2013             | HBH                   | BS                | BS             |
|      | Situasjonsplan                                       | Oppdragsnr.<br>612417 | Konstr./Tegnet<br>HBH | Kontrollert<br>BS | Godkjent<br>BS |
|      |  | Tegningsnr.<br>L01    |                       |                   | Rev.<br>0      |



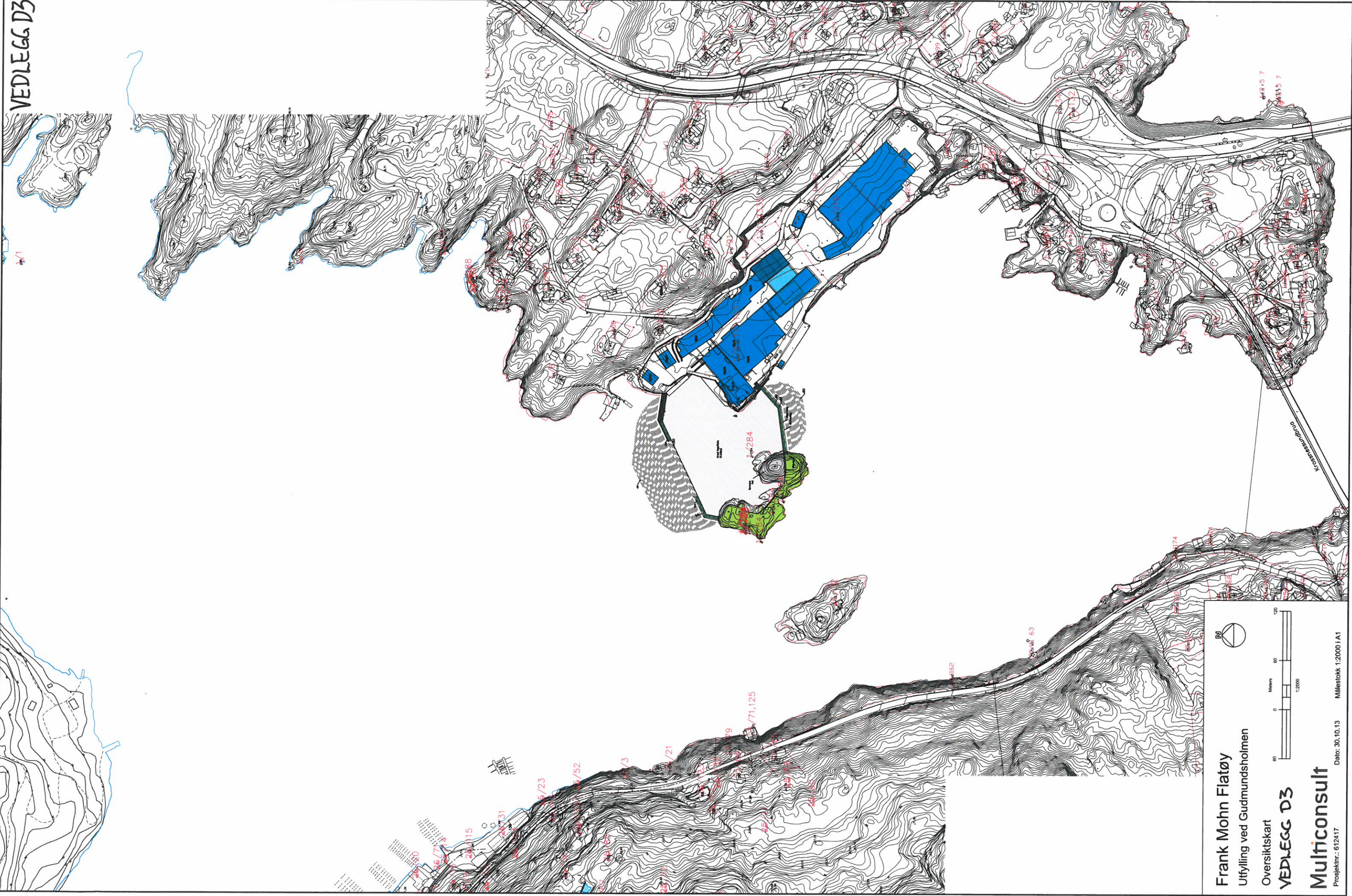
Areal toppflate  
17.400m<sup>2</sup>

- TEGNFORKLARING
- Topplate fylling
  - Steinsetting
  - Grøntbette
  - Skjæring
  - Nedsprengt
  - Hus
  - Plastring
  - Nye koter



## Rammesøknad VEDLEGG D-2

|                |                              |                               |                |             |          |
|----------------|------------------------------|-------------------------------|----------------|-------------|----------|
| 0              | Søknad om tiltak             | 29.10.2013                    | HBH            | BS          | BS       |
| Rev.           | Beskrivelse                  | Dato                          | Tegn.          | Kontr.      | Godk.    |
|                |                              | Original format               | Fag            |             |          |
|                |                              | A3                            | LARK           |             |          |
|                | Frank Mohn Flatøy AS         | Tegningens filnavn            |                |             |          |
|                | Utfylling ved Gudmundsholmen | 612417-L01 Situasjonsplan.dwg |                |             |          |
|                |                              | Underlagets filnavn           |                |             |          |
| Situasjonsplan |                              | Målestokk                     |                |             |          |
|                |                              | 1:1000                        |                |             |          |
| MULTICONSULT   |                              | Dato                          | Konstr./Tegnet | Kontrollert | Godkjent |
|                |                              | 17.9.2013                     | HRH            | BS          | BS       |
|                |                              | Oppdragnr.                    | Tegningnr.     | Rev.        |          |
|                |                              | 612417                        | L01            | 0           |          |



VEDLEGG D3

Frank Mohn Flatøy  
Utfylling ved Gudmundsholmen

Oversiktskart

VEDLEGG D3

Multiconsult

Prosjektnr.: 612417

Dato: 30.10.13

Målestokk 1:2000 I A1

