

Gemini | Oppmåling

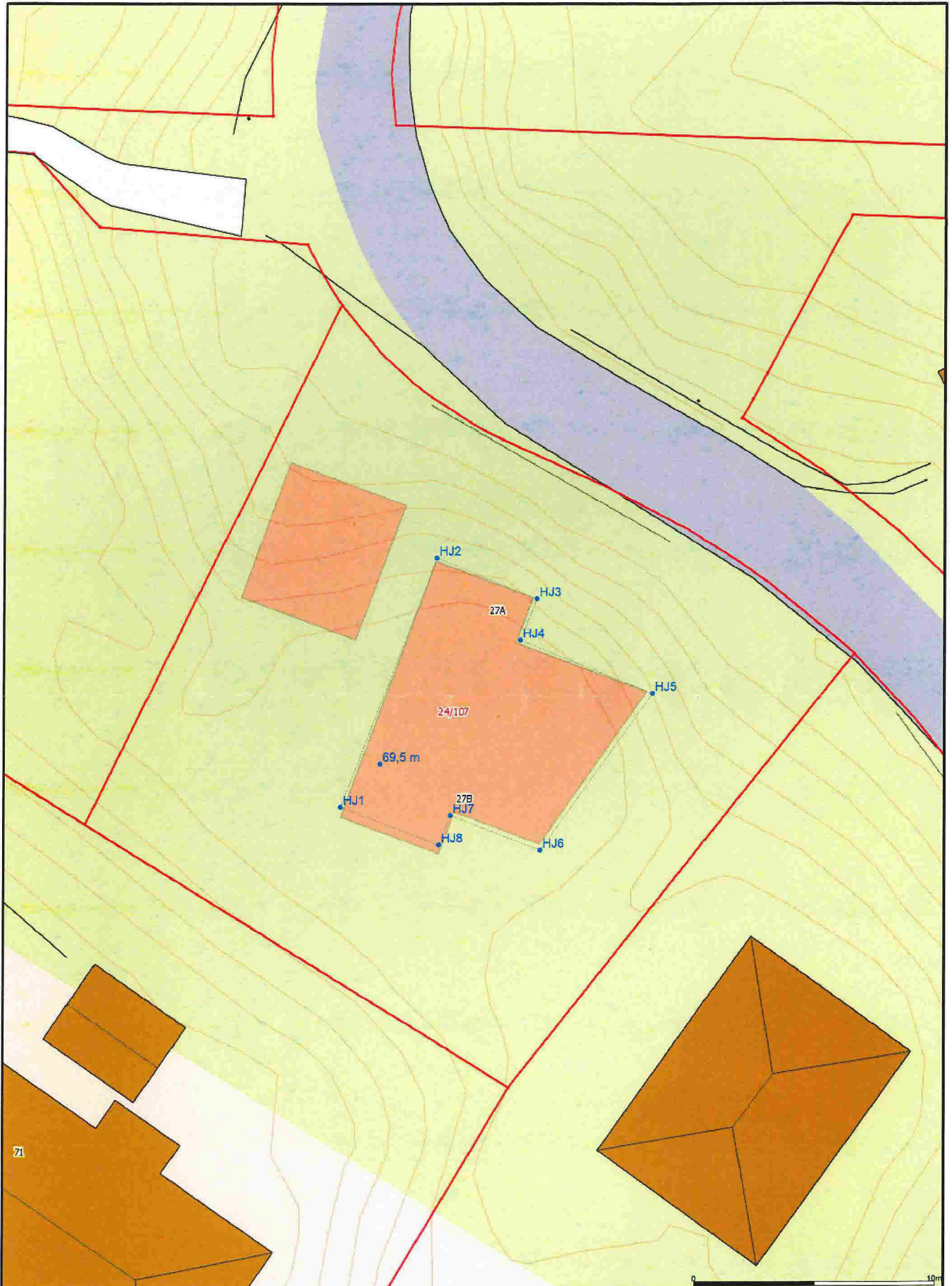
Punktliste



Prosjekt: Q:\Fosse Tore Andre\Gemini\Innmålt Hus ferdig.gmi

Koordinatsystem: UTM(EUREF89) - SONE 32

03.12.2015

PunktID	Tema	N-koord.	Ø-koord.	Høyde	Geoide H	Status
69,5 m	5006	6 715 576,239	293 056,772	69,496		K
HJ1	5006	6 715 574,459	293 055,147			K
HJ2	5006	6 715 584,775	293 059,106			K
HJ3	5006	6 715 583,090	293 063,301			K
HJ4	5006	6 715 581,374	293 062,611			K
HJ5	5006	6 715 579,157	293 068,129			K
HJ6	5006	6 715 572,680	293 063,446			K
HJ7	5006	6 715 574,123	293 059,698			K
HJ8	5006	6 715 572,898	293 059,206			K



<p>Anko AS - Bergen Flesamerveien 90C - 9059 Bergen 55327870 / www.anko.no</p>	 <p>ANKO <small>BYGGING OG ANLEGG</small></p> <p>dato: 2019.12.03 skiss: 305</p>	<p>Anko AS Bergen</p>	 <p>N Skala 1:150</p>
--	--	------------------------------------	--