

D side

45/261 57

19.5

45/324 51

45/275 53

45/430

N 6729000

N 6729000

20

45/274

22.7

65

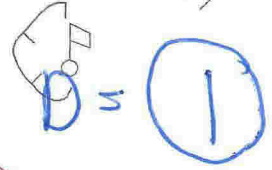
63

45/327

N 6728950

N 6728950

67



45/1/54

20.5

25.9



Gnr.45 bnr.274
Atterhald om feil i kartgrunnlaget
15.05.2014
Målestokk 1:500
Radøy kartverk

E 283200