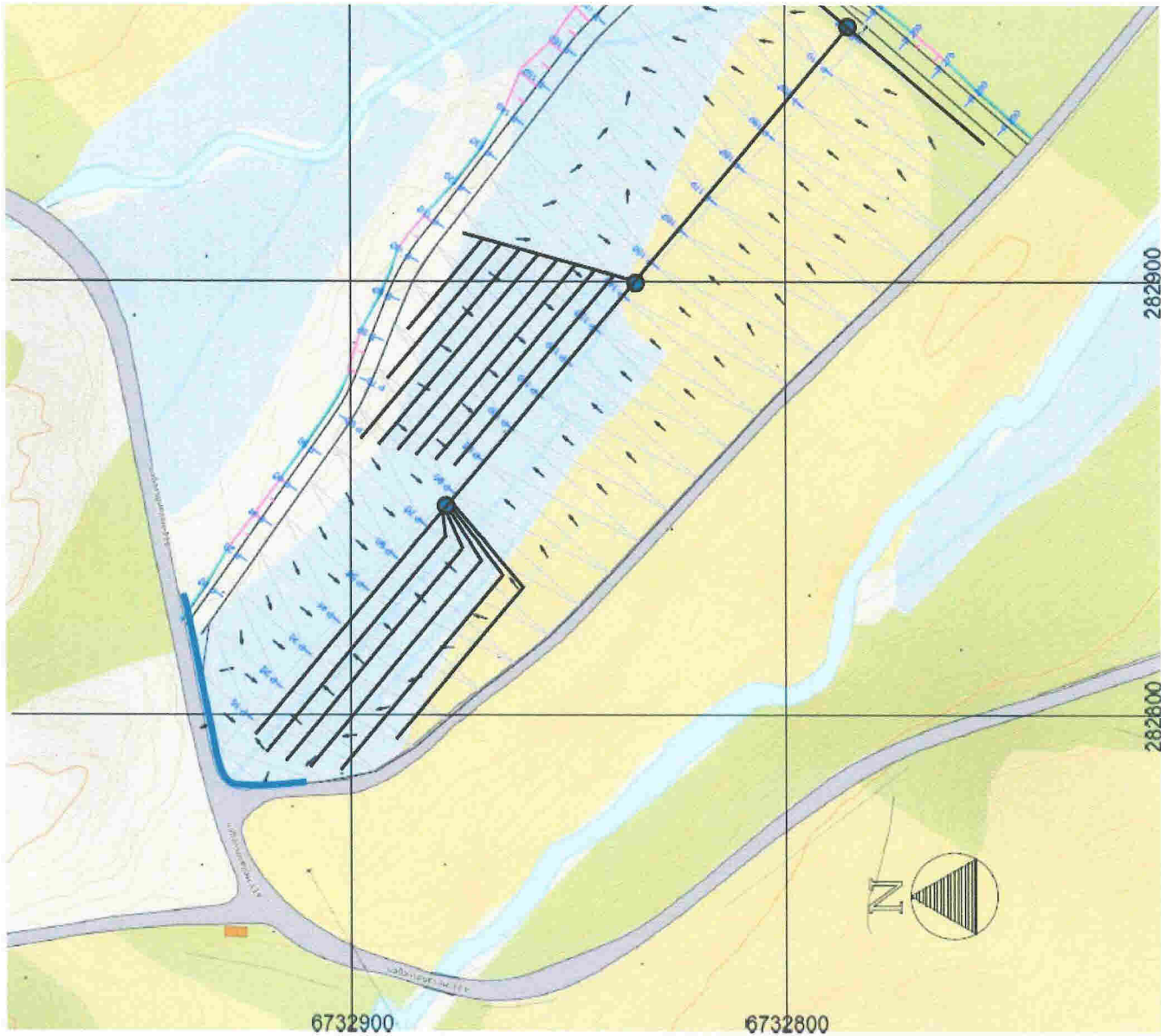
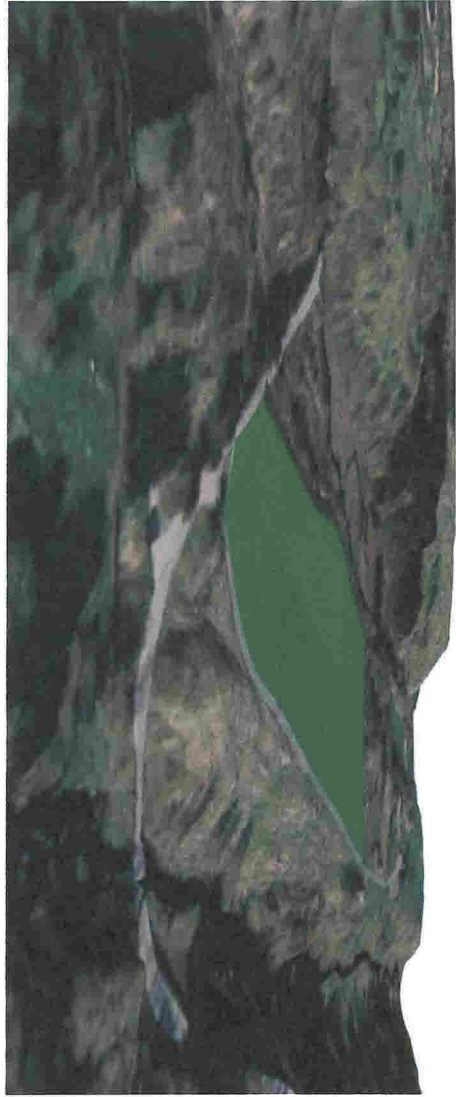
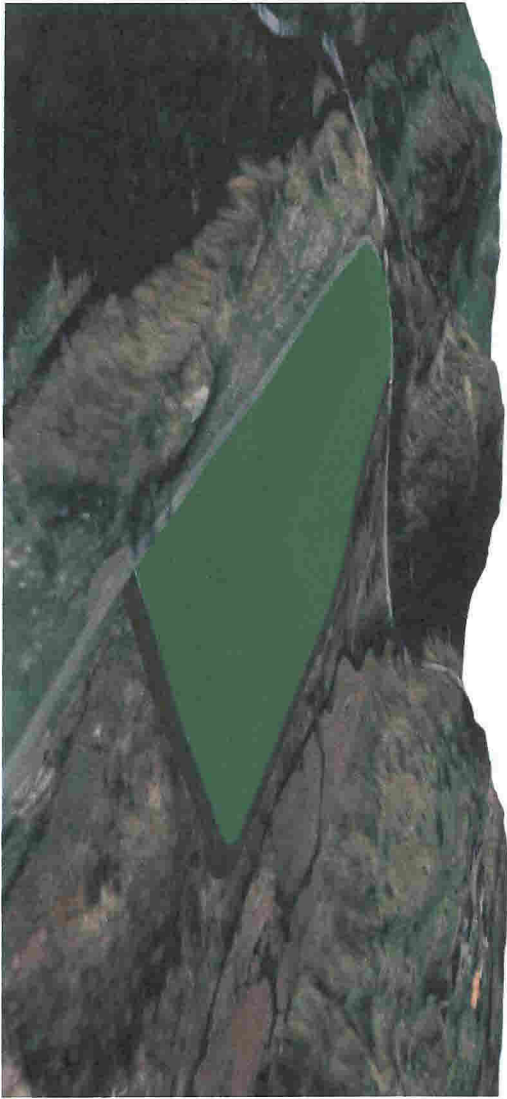




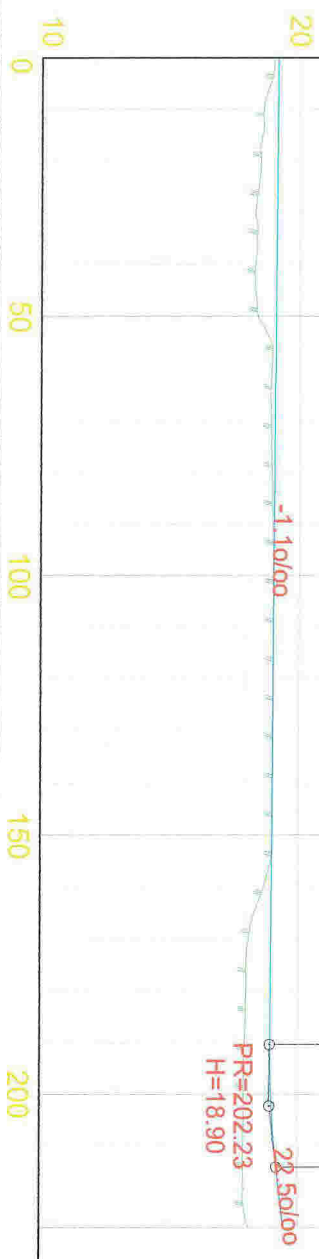
Flyfoto fra 2015. Trase for planlagt ny driftsvei er omtrentlig inntegnet.

«Anleggsområdet» midt på bildet er nå ferdig oppdyrket.





HOH. 30



HOR. KURV.

BREDEDE/TV.

VEIBANE H.

SKJ./FYLL.

0.14	19.13
0.55	19.12
0.65	19.11
0.85	19.10
0.83	19.09
0.70	19.07
0.15	19.06
0.16	19.05
0.11	19.04
0.05	19.03
0.02	19.02
0.01	19.01
-0.00	18.99
-0.02	18.98
-0.03	18.97
-0.04	18.96
0.31	18.95
0.88	18.94
0.95	18.93
1.00	18.92
1.05	18.95
1.22	19.08
1.43	19.30
1.34	19.43

