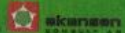
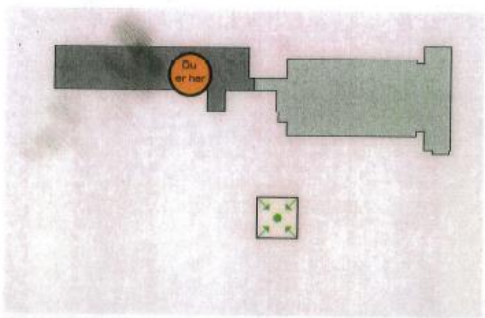
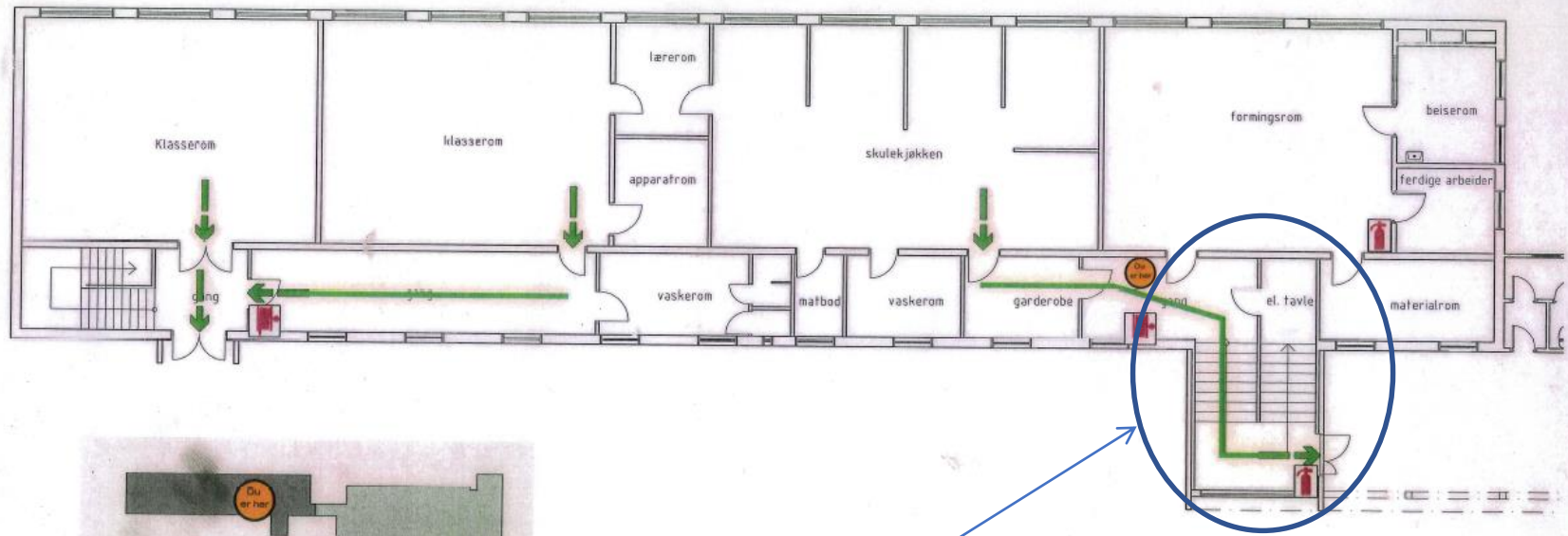



RØMNINGSPLAN/ EVACUATION PLAN


Prosjekt: NS31620/2010
Oppdrag: 11.13.2010
Dato: 19.11.2010
Målgruppe: Tjenestemenn og studenter



1. ETASJE





Eksisterende plattform heis demteres og ny plattformheis monteres.


 HÅNDSLOKKER
PORTABLE FIRE EXTINGUISHER

 MANUELL BRANNMELDER
MANUAL CALL POINT

 BRANNSLANGE
FIRE HOSE

 HER STÅR DU
YOU ARE HERE

 RØMNINGSVEI
ESCAPE ROUTE

 UTGANG/ TRAPPEROM
EXIT/ STAIRCASE

 MØTEPLASS
MEETING POINT