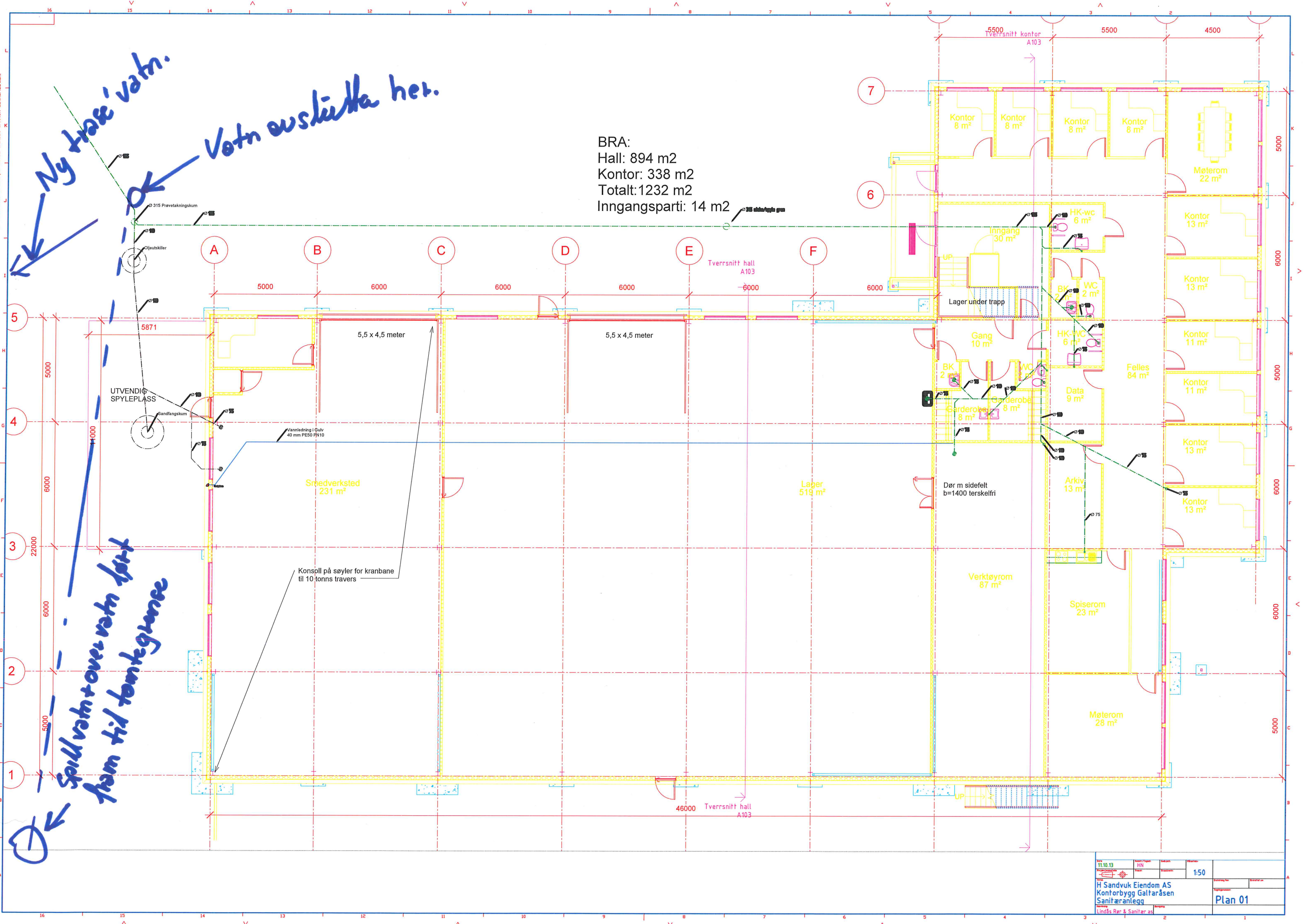


All rights reserved. Passing on and copying of this document, use and communication of its contents not permitted without written authorization.

Ny trase' vann.
Vann avsluttet her.

BRA:
Hall: 894 m²
Kontor: 338 m²
Totalt: 1232 m²
Inngangsparti: 14 m²

Spillvann + overvann ført fram til tomtegrense



11.10.13	HN	1:50	
H Sandvuk Eiendom AS Kontorbygg Galtaråsen Sanitærnett			Plan 01
Lindås Rør & Sanitær AS			