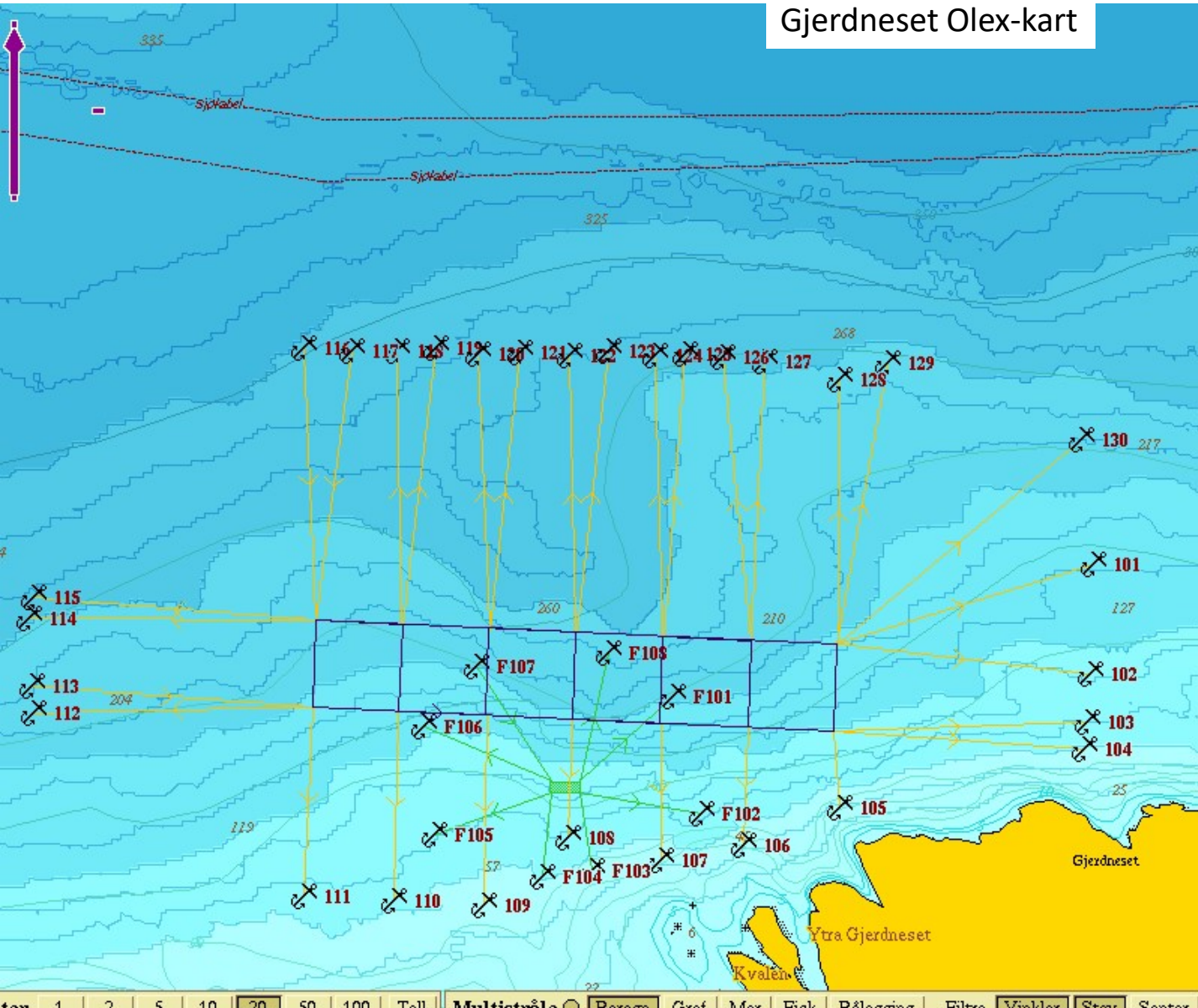


Gjerdneset Olex-kart

Vedlegg 6.1.3 c)



Rammehjørne		
NV	60° 36.999 N	05° 51.470 Ø
NØ	60° 36.982 N	05° 02.196 Ø
SØ	60° 36.922 N	05° 02.191 Ø
SV	60° 36.939 N	05° 01.466 Ø
Midtpunkt		
	60° 36.962 N	05° 01.827 Ø

Flåteposisjon		
	60° 36.884 N	05° 01.819 Ø
Flåtefortøyning		
Ankerline	Posisjon	
F101	60° 36.947 N	05° 01.967 Ø
F102	60° 36.866 N	05° 02.006 Ø
F103	60° 36.828 N	05° 01.854 Ø
F104	60° 36.824 N	05° 01.785 Ø
F105	60° 36.853 N	05° 01.635 Ø
F106	60° 36.926 N	05° 01.621 Ø
F107	60° 36.967 N	05° 01.695 Ø
F108	60° 36.976 N	05° 01.877 Ø

Rammefortøyning		
Ankerline	Posisjon	
101	60° 37.037 N	05° 02.551 Ø
102	60° 36.962 N	05° 02.547 Ø
103	60° 36.929 N	05° 02.543 Ø
104	60° 36.910 N	05° 02.538 Ø
105	60° 36.871 N	05° 02.198 Ø
106	60° 36.845 N	05° 02.066 Ø
107	60° 36.834 N	05° 01.951 Ø
108	60° 36.850 N	05° 01.822 Ø
109	60° 36.804 N	05° 01.705 Ø
110	60° 36.807 N	05° 01.579 Ø
111	60° 36.810 N	05° 01.454 Ø
112	60° 36.935 N	05° 01.078 Ø
113	60° 36.953 N	05° 01.075 Ø
114	60° 37.000 N	05° 01.071 Ø
115	60° 37.014 N	05° 01.077 Ø
116	60° 37.184 N	05° 01.454 Ø
117	60° 37.182 N	05° 01.521 Ø
118	60° 37.182 N	05° 01.583 Ø
119	60° 37.184 N	05° 01.638 Ø
120	60° 37.180 N	05° 01.696 Ø
121	60° 37.181 N	05° 01.753 Ø
122	60° 37.178 N	05° 01.824 Ø
123	60° 37.182 N	05° 01.877 Ø
124	60° 37.179 N	05° 01.942 Ø
125	60° 37.180 N	05° 01.983 Ø
126	60° 37.177 N	05° 02.037 Ø
127	60° 37.175 N	05° 02.095 Ø
128	60° 37.163 N	05° 02.200 Ø
129	60° 37.174 N	05° 02.265 Ø
130	60° 37.122 N	05° 02.535 Ø