

Toftheim

Fasadetegninger

Heim
Hytter

Byggested
Toft

Kommune
4631 Alver

Gnr
18

Bnr
36

Tomteareal
1075,3m²

Grunnmodell
HH/90

BYA
108m²

BRA
90m²

Mønehøyde
530cm

Gesimshøyde
300cm

Målestokk
1:100



Toftheim

Plan 1. etg.

Heim
Hytter

Byggested
Toft

Kommune
4631 Alver

Gnr
18

Bnr
36

Tomteareal
1075,3m²

Grunnmodell
HH/90

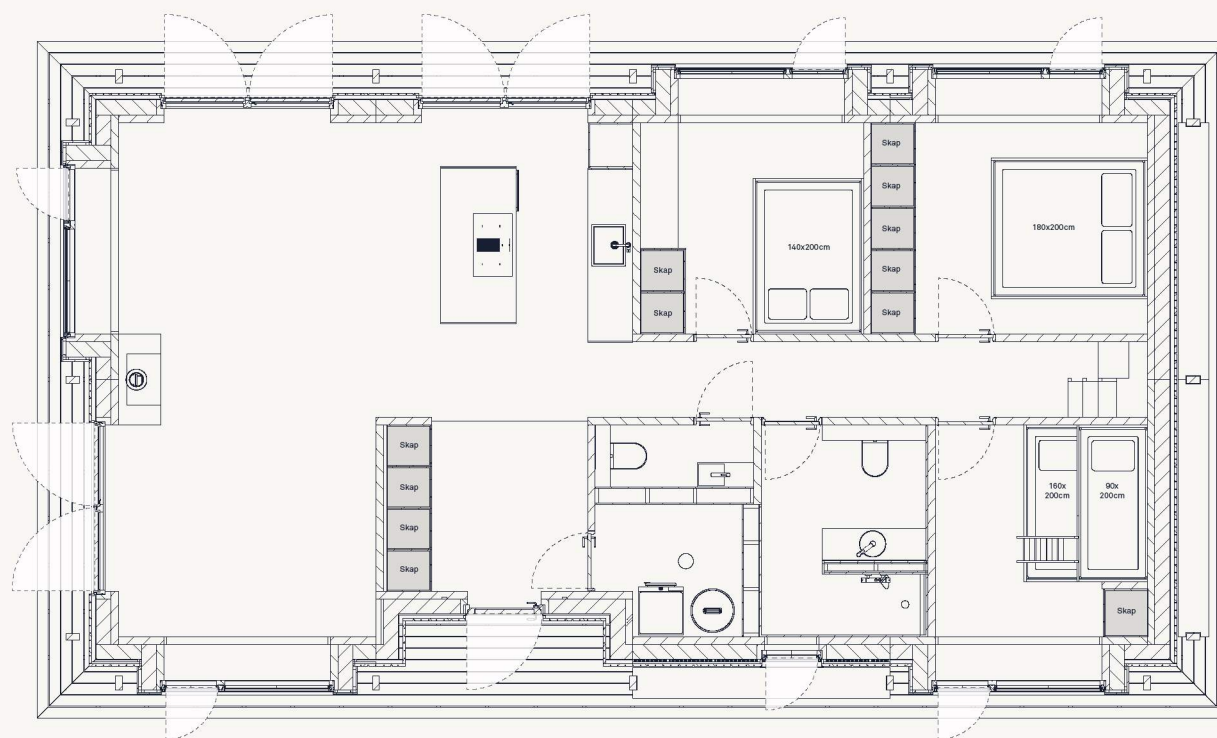
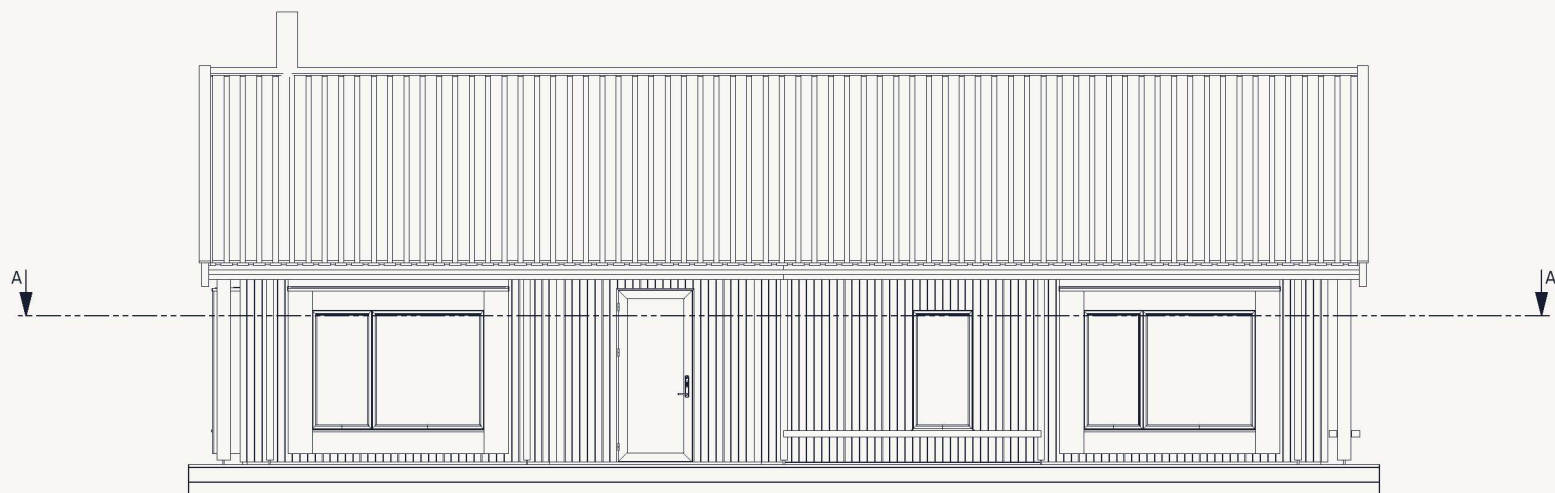
BYA
108m²

BRA
90m²

Mønehøyde
530cm

Gesimshøyde
300cm

Målestokk
1:100



SECTION A-A

Toftheim

Plan 1. etg. (målsatt)

Heim
Hytter

Byggested
Toft

Kommune
4631 Alver

Gnr
18

Bnr
36

Tomteareal
1075,3m²

Grunnmodell
HH/90

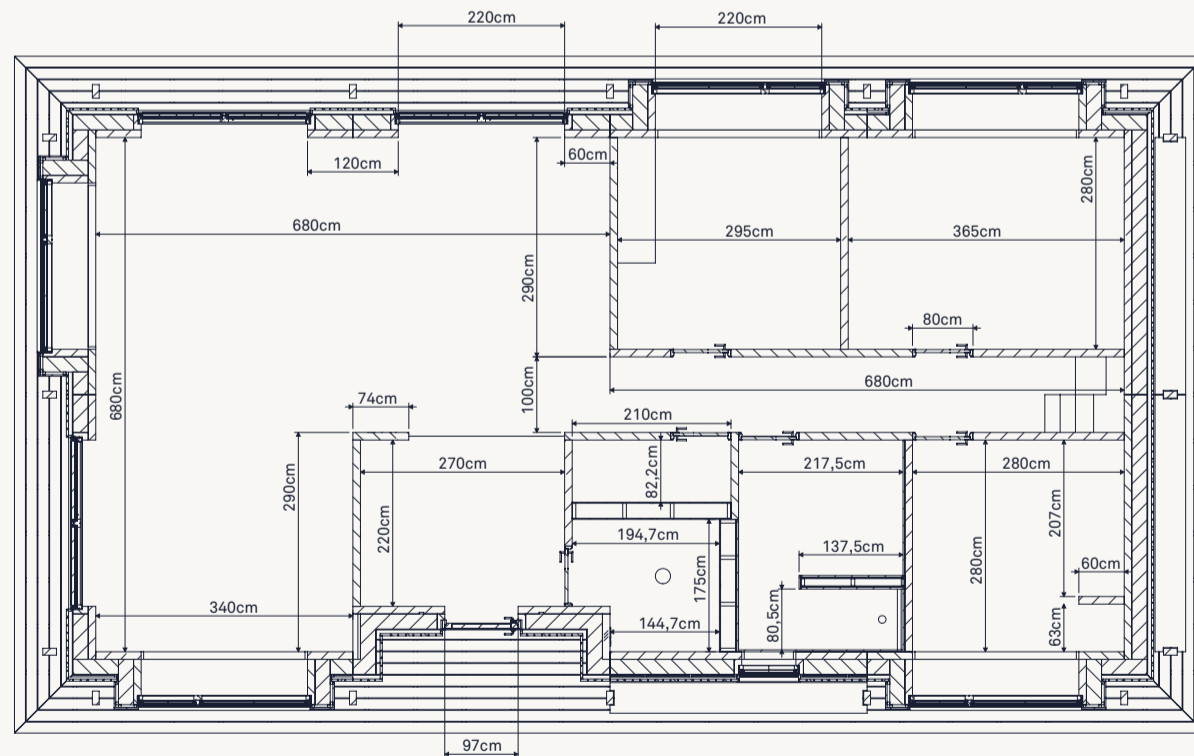
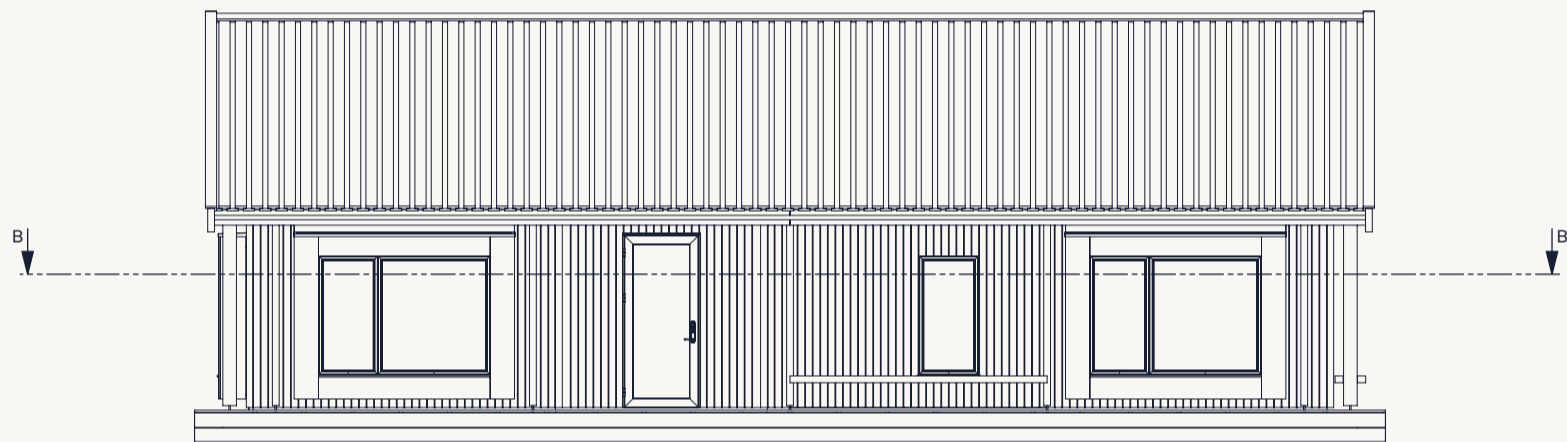
BYA
108m²

BRA
90m²

Mønehøyde
530cm

Gesimshøyde
300cm

Målestokk
1:100



SECTION B-B

Toftheim

Plan hems

Heim
Hytter

Byggested
Toft

Kommune
4631 Alver

Gnr
18

Bnr
36

Tomteareal
1075,3m²

Grunnmodell
HH/90

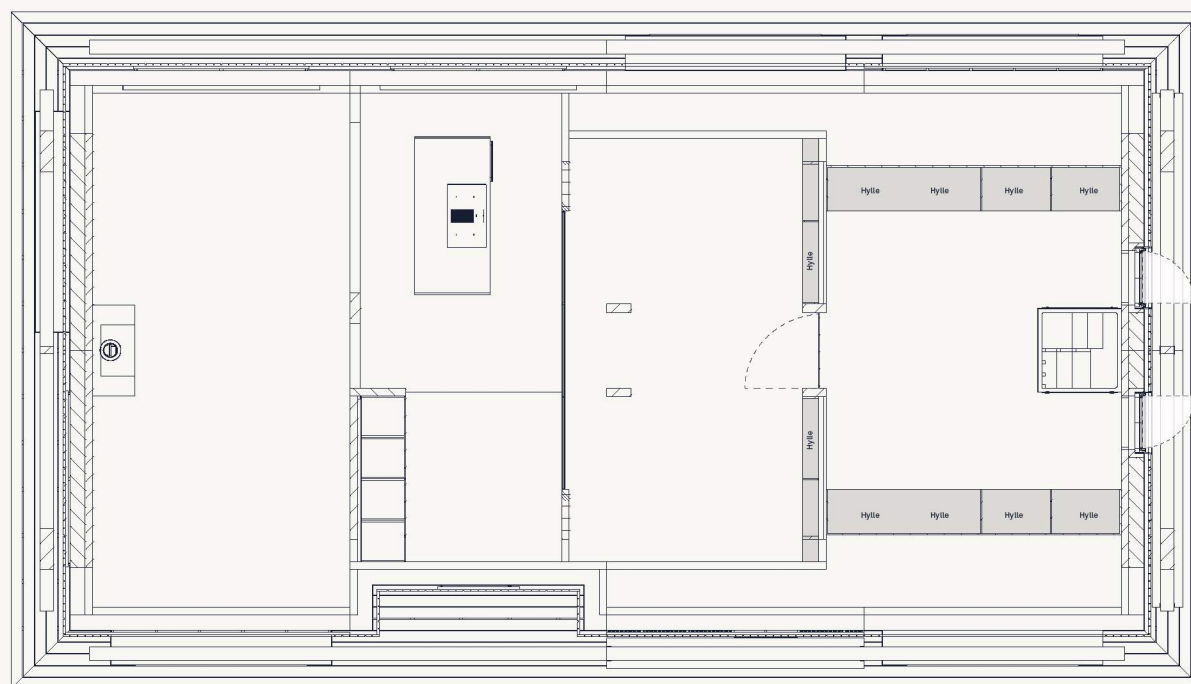
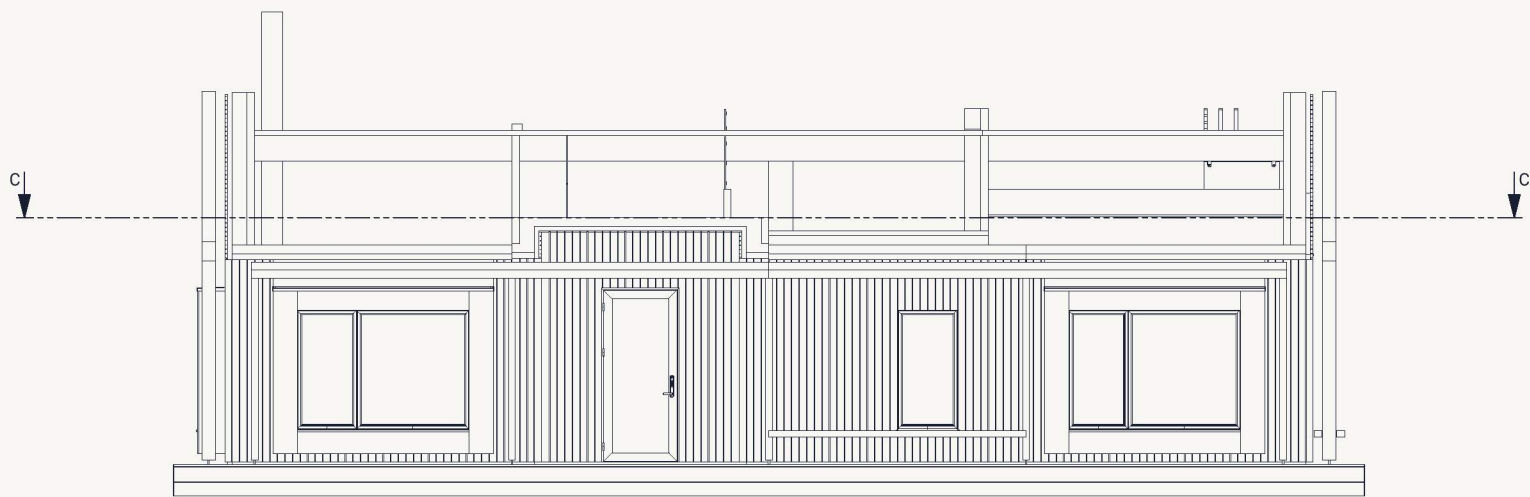
BYA
108m²

BRA
90m²

Mønehøyde
530cm

Gesimshøyde
300cm

Målestokk
1:100



SECTION C-C

Toftheim

Plan hems (målsatt)

Heim
Hytter

Byggested
Toft

Kommune
4631 Alver

Gnr
18

Bnr
36

Tomteareal
1075,3m²

Grunnmodell
HH/90

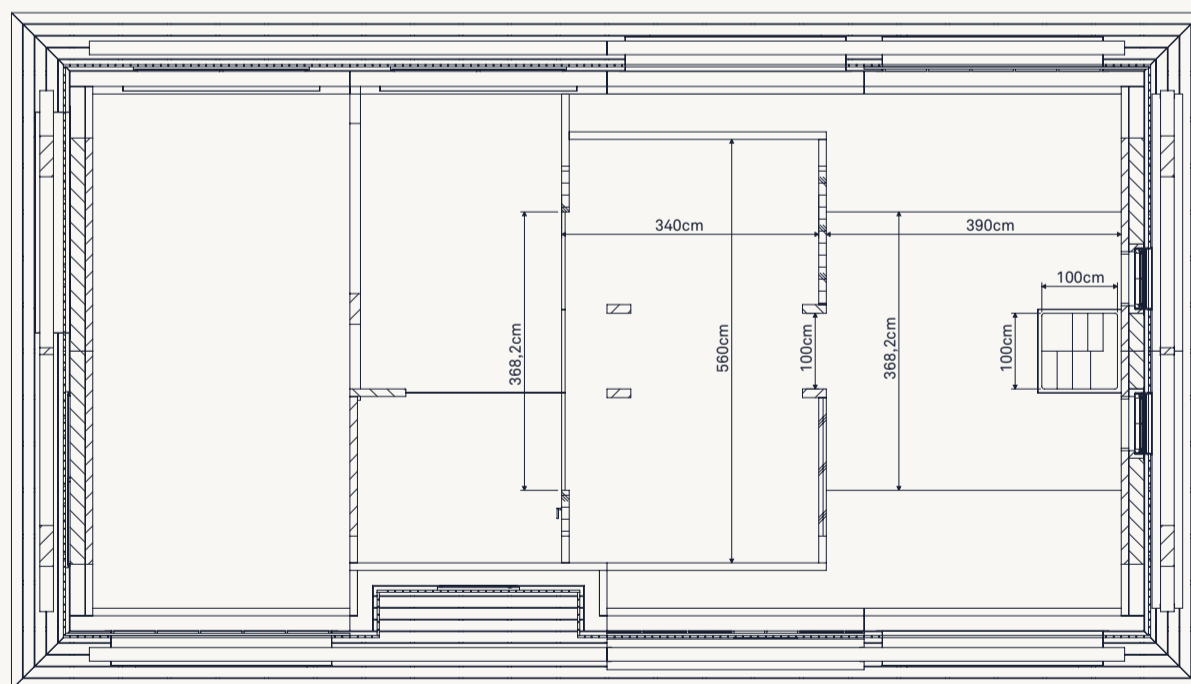
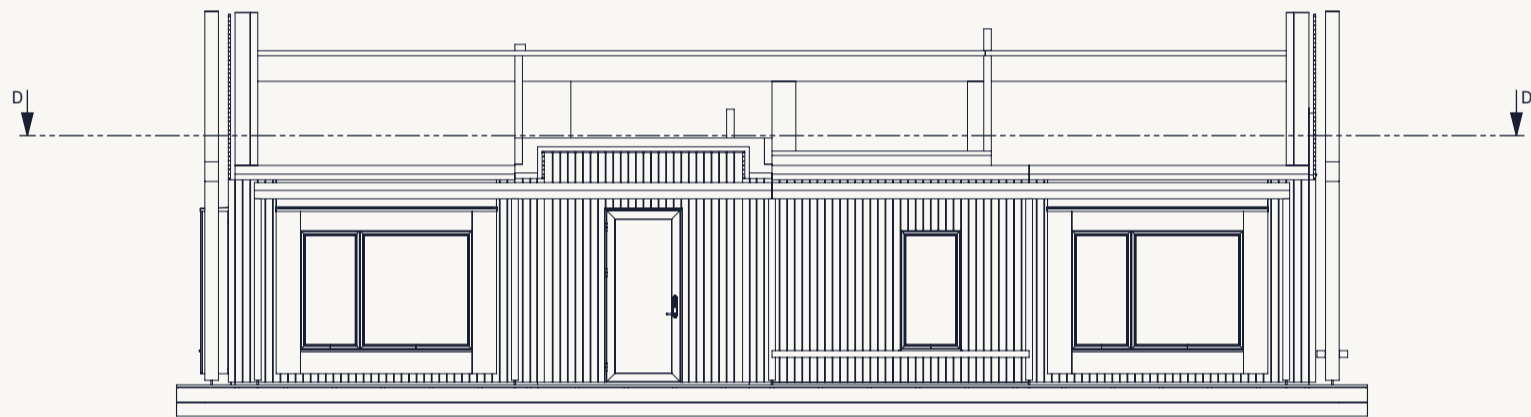
BYA
108m²

BRA
90m²

Mønehøyde
530cm

Gesimshøyde
300cm

Målestokk
1:100



SECTION D-D

Tofthheim

Snitt langsida

Heim
Hytter

Byggested
Toft

Kommune
4631 Alver

Gnr
18

Bnr
36

Tomteareal
1075,3m²

Grunnmodell
HH/90

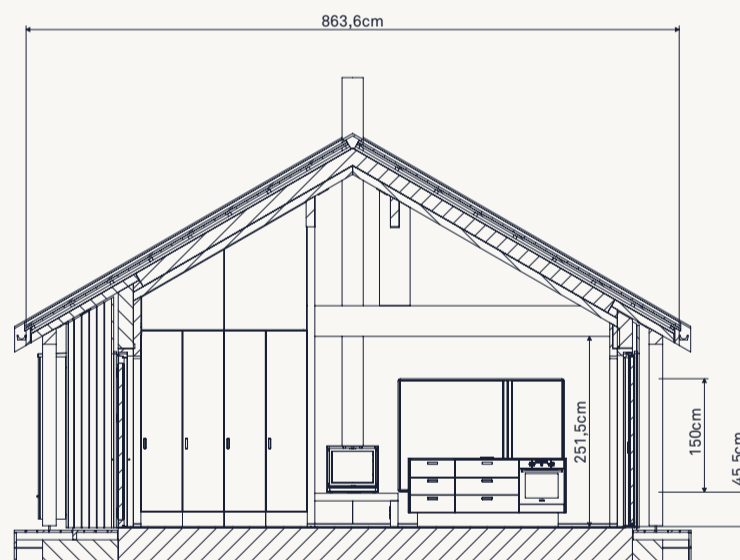
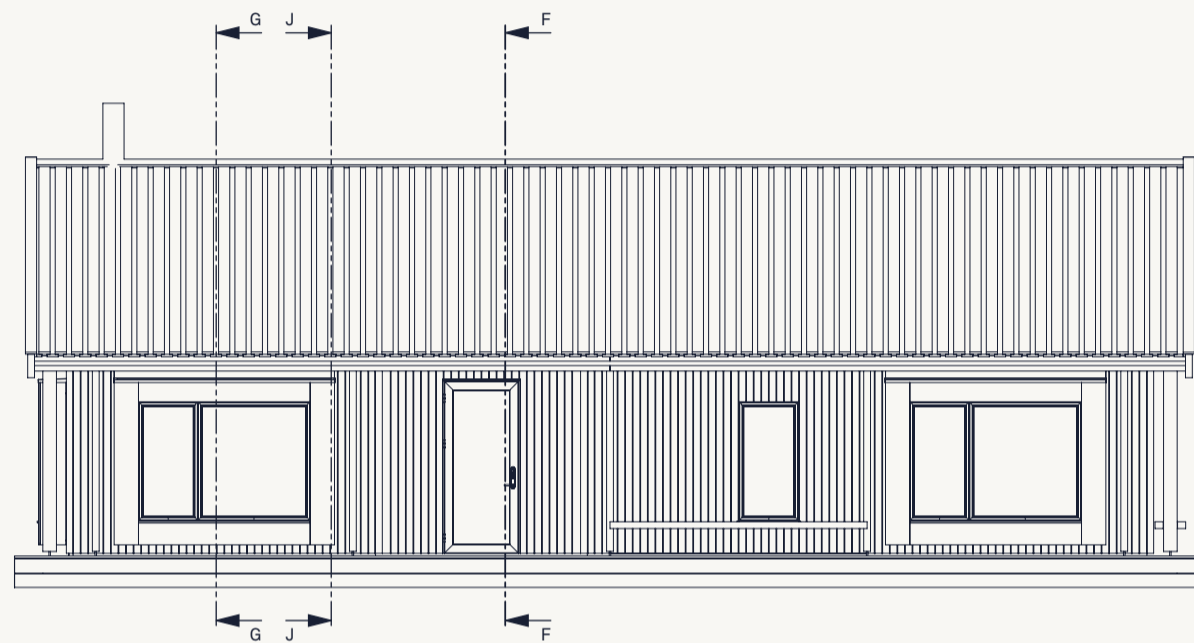
BYA
108m²

BRA
90m²

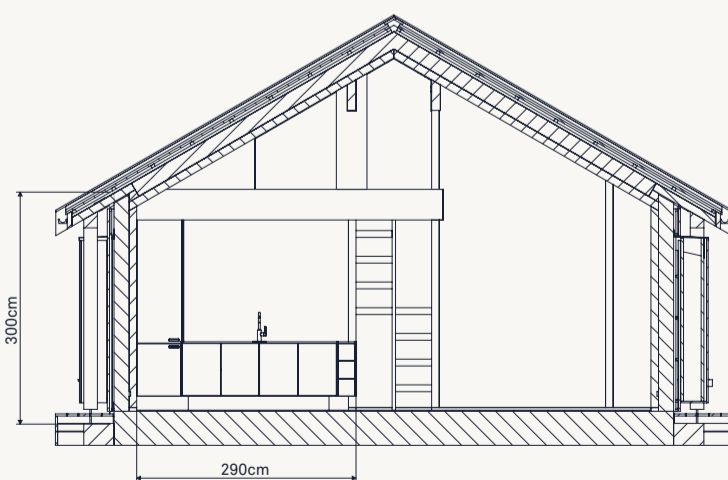
Mønehøyde
530cm

Gesimshøyde
300cm

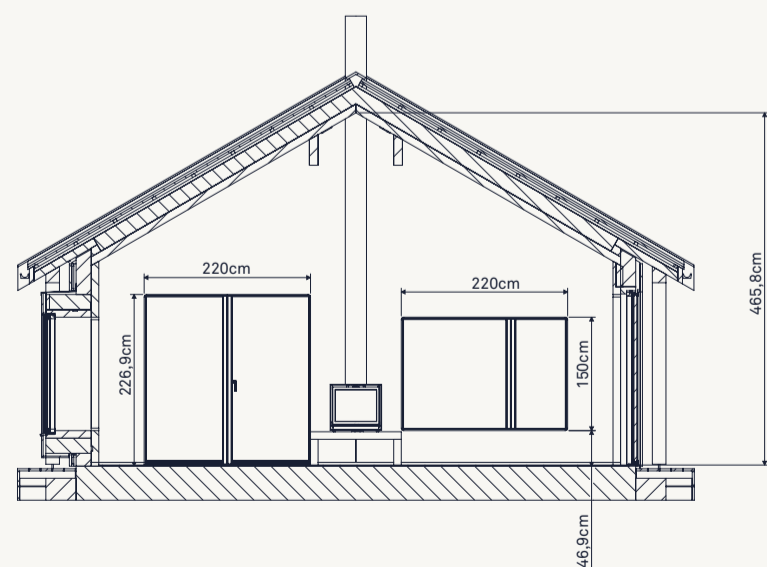
Målestokk
1:100



SECTION F-F



SECTION J-J



SECTION G-G

Tofthheim

Snitt langsida

Heim
Hytter

Byggested
Toft

Kommune
4631 Alver

Gnr
18

Bnr
36

Tomteareal
1075,3m²

Grunnmodell
HH/90

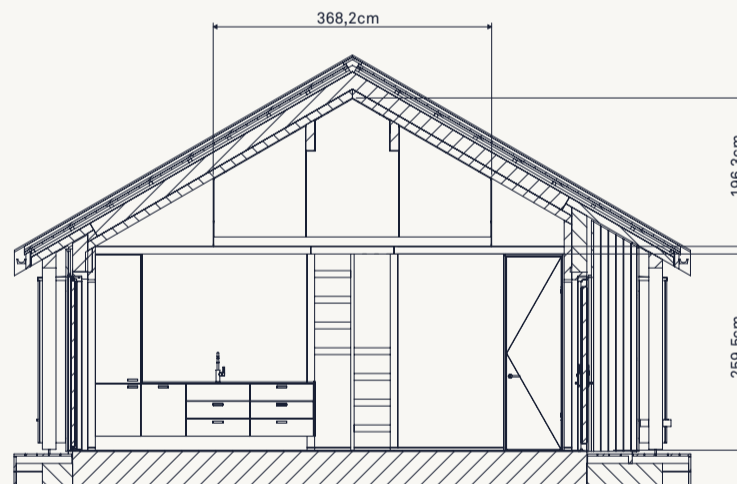
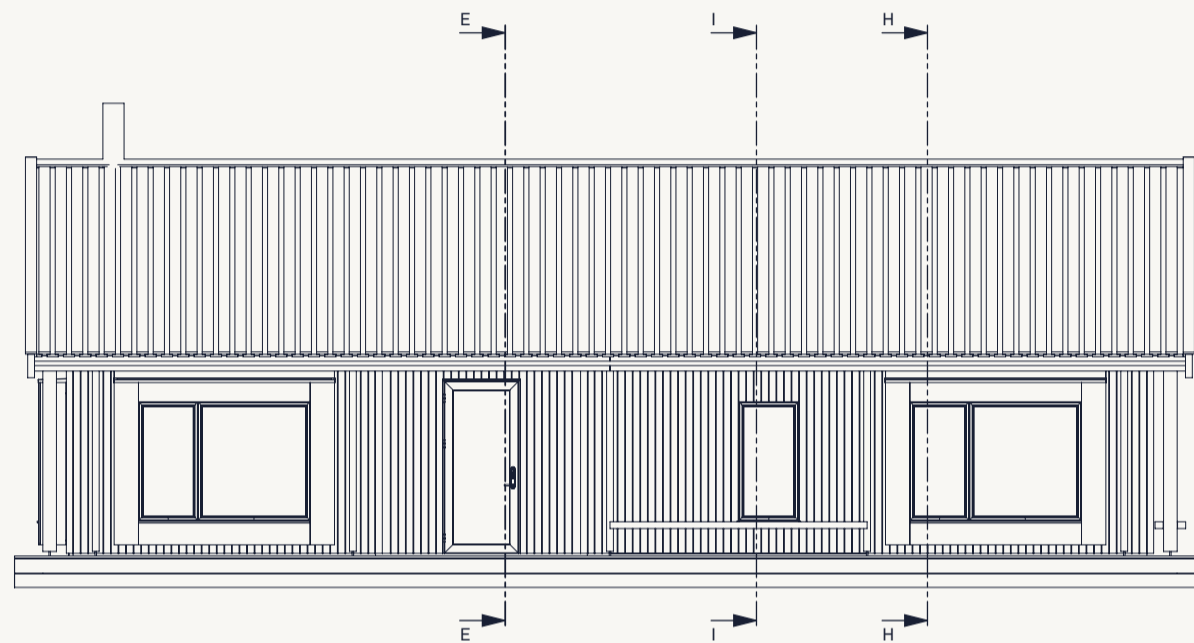
BYA
108m²

BRA
90m²

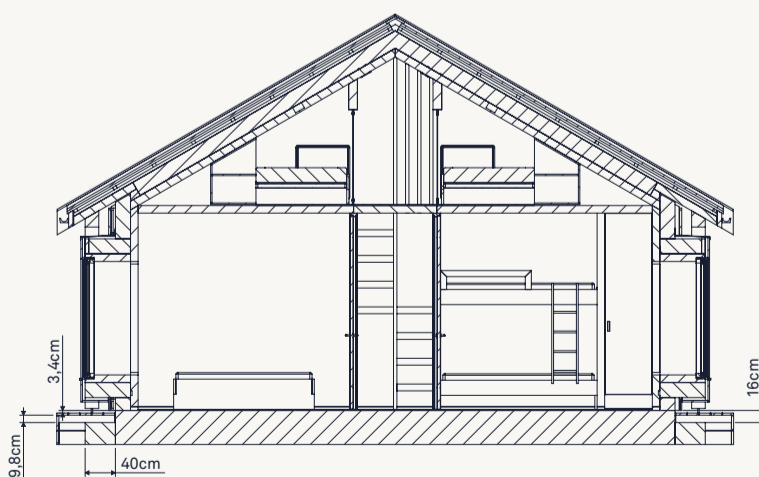
Mønehøyde
530cm

Gesimshøyde
300cm

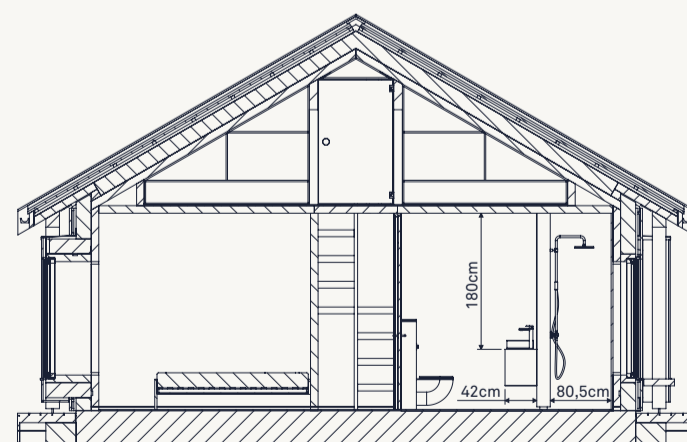
Målestokk
1:100



SECTION E-E



SECTION H-H



SECTION I-I

Toftheim

Snitt kortside

Heim
Hytter

Byggested
Toft

Kommune
4631 Alver

Gnr
18

Bnr
36

Tomteareal
1075,3m²

Grunnmodell
HH/90

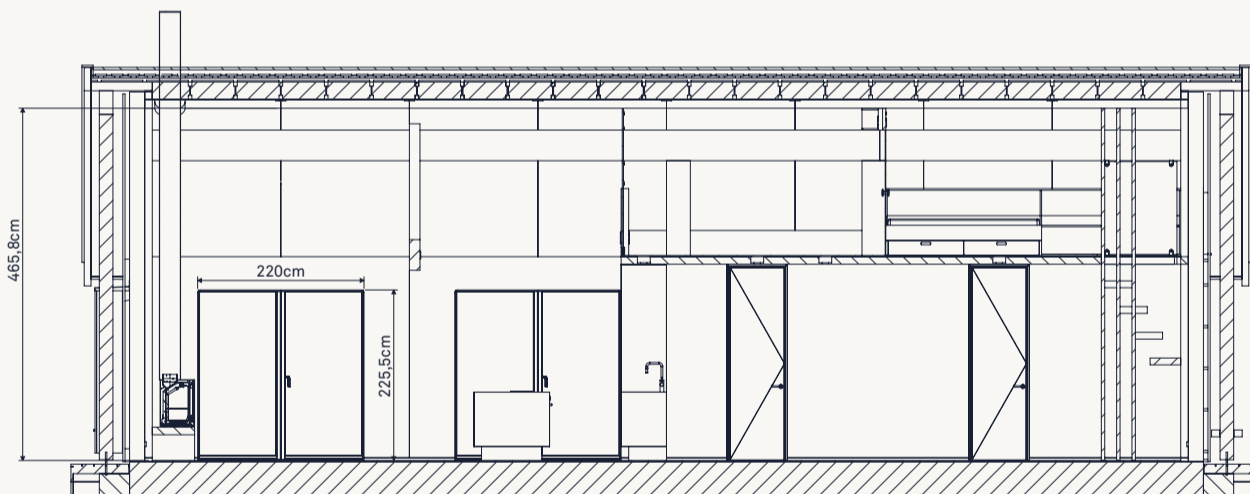
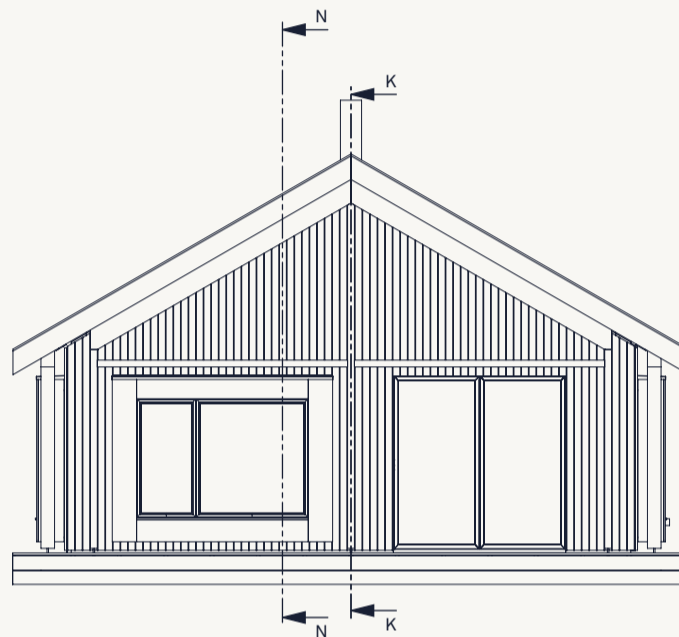
BYA
108m²

BRA
90m²

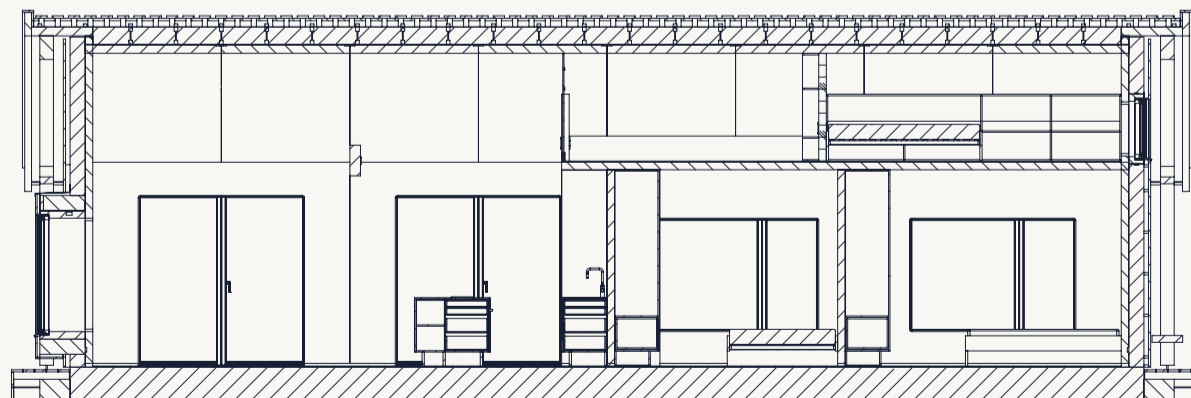
Mønehøyde
530cm

Gesimshøyde
300cm

Målestokk
1:100



SECTION K-K



SECTION N-N

Tofthheim

Snitt kortside

Heim
Hytter

Byggested
Toft

Kommune
4631 Alver

Gnr
18

Bnr
36

Tomteareal
1075,3m²

Grunnmodell
HH/90

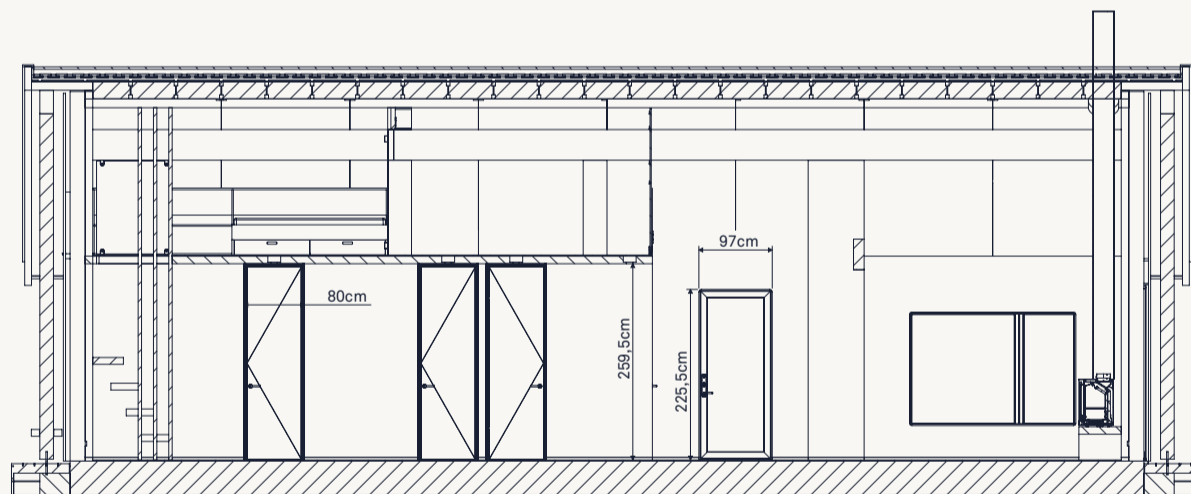
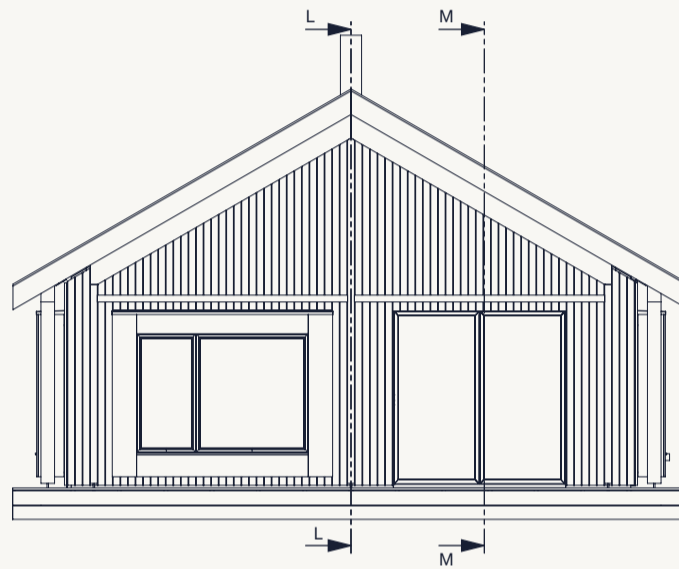
BYA
108m²

BRA
90m²

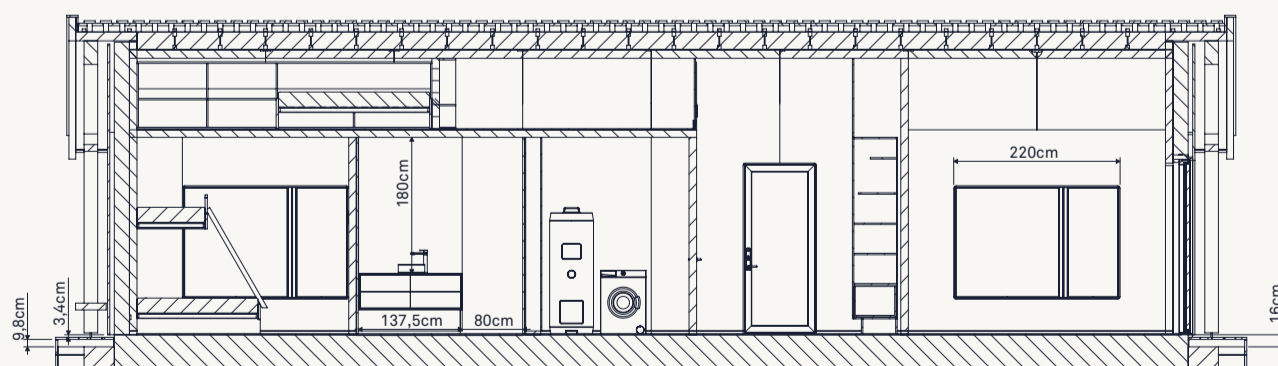
Mønehøyde
530cm

Gesimshøyde
300cm

Målestokk
1:100



SECTION L-L



SECTION M-M