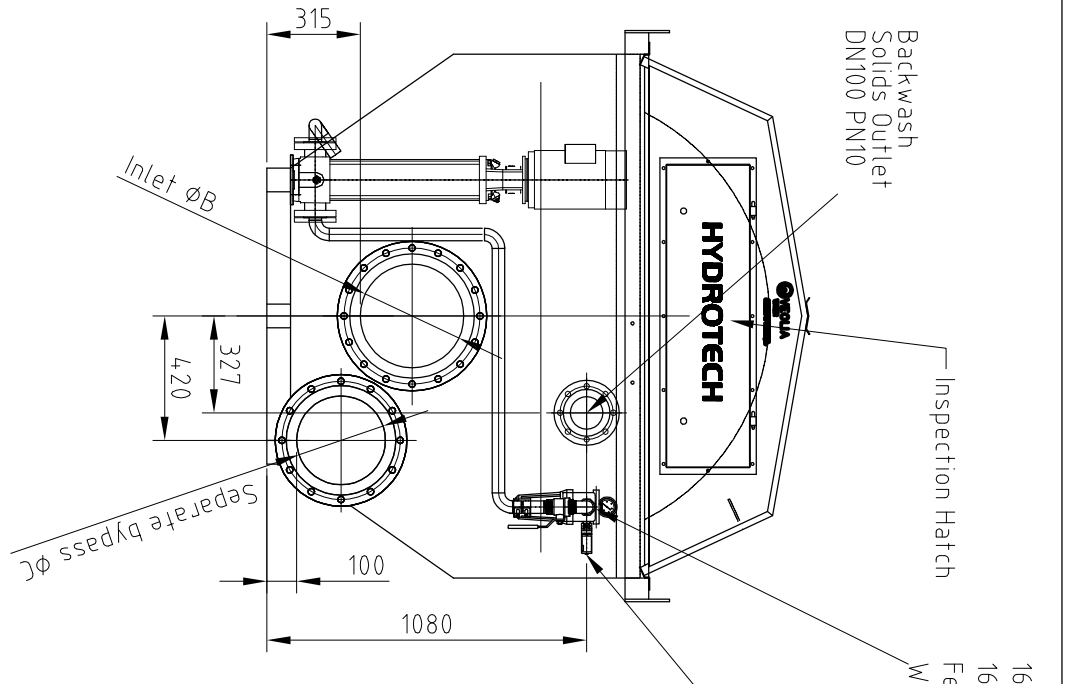


**PROPERTY OF DRAWINGS AND PRESCRIPTIONS**

All property, rights and use remain to **HYDROTECH** AB, Sweden

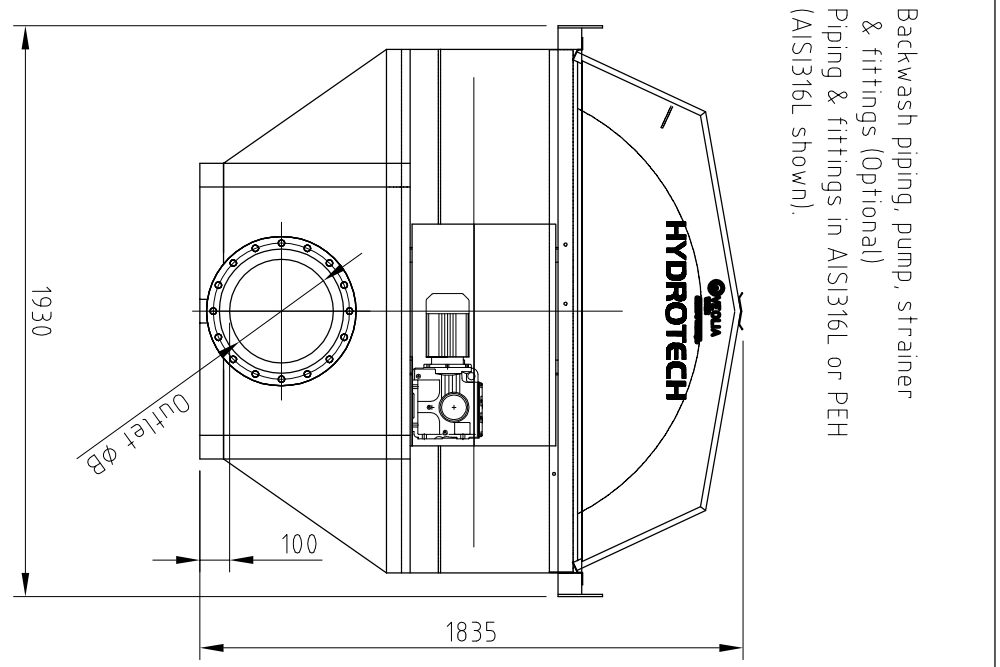
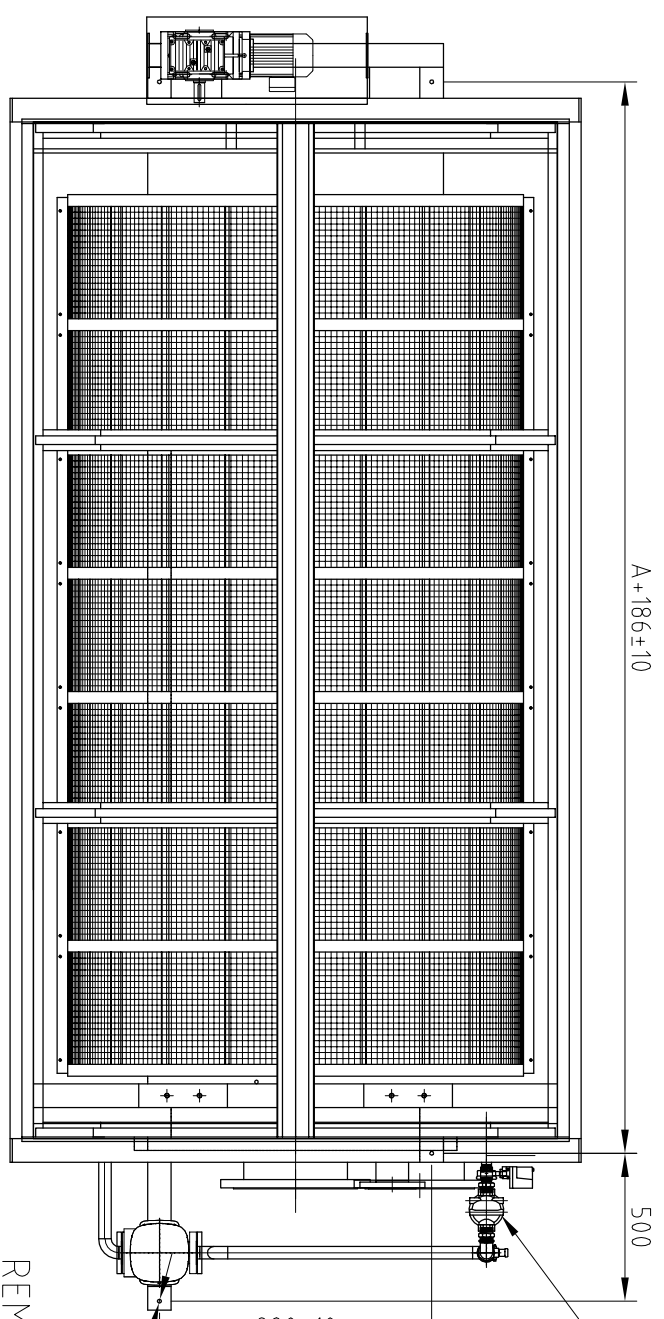
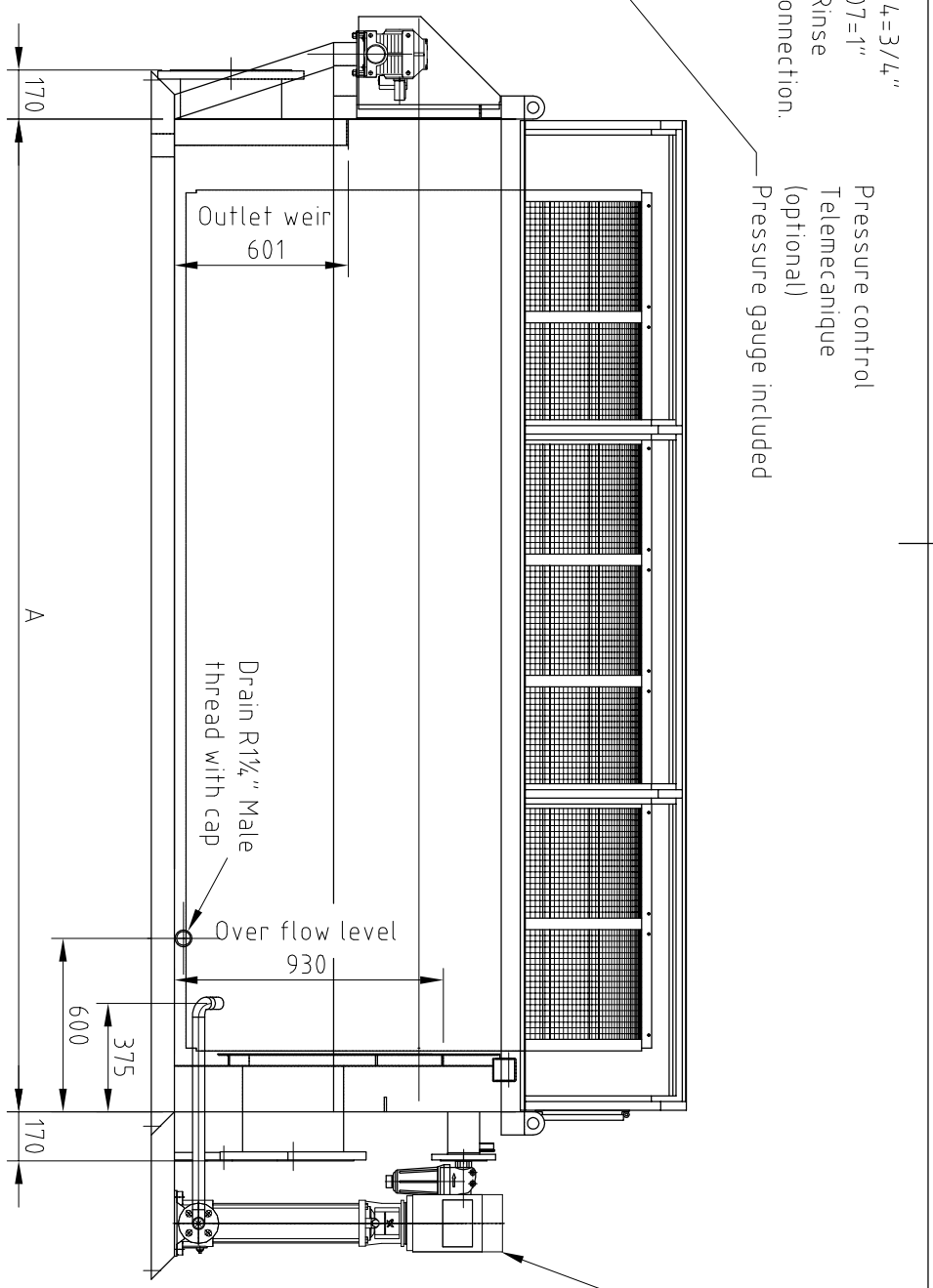
General conditions and use for this drawing is in accordance to ORGALIME S2000



CONNECTIONS		
Flow l/s	φ B	φ C
25	DN200 PN10	DN200 PN10
45	DN250 PN10	DN250 PN10
65	DN300 PN10	DN300 PN10
95	DN350 PN10	DN300 PN10

MAINTENANCE ACCESS SHOULD BE PROVIDED TO ALL FOUR SIDES OF THE FILTER, SIZED TO SUIT LOCAL REGULATIONS, TYPICALLY 1000 mm, BUT NOT LESS THAN 600 mm.

WE RESERVE THE RIGHT THAT WITHOUT ANY NOTICE TO CHANGE THE DESIGN OF THE EQUIPMENT



TYPE	A
1601	895
1602	1315
1603	1735
1604	2155
1605	2595
1606	3015
1607	3435

**REMARK:**  
 MAX FLOW RATE TO BE TREATED WITH INTEGRATED SEPARATE BYPASS Q=95l/s

All dimensions in mm.

Ed	Change and/or message no.	Date	Made by	c-m no.
				V

Part no.	Quantity	Name	Material	Mod-nr Bank Dimension	Remark
Designer	Drawn by FT	Copy	Controlled by	Stand ISO 2768-m	Approved
				Scale 1:25	
Measure drawing Drumfilter HDF1600-1F (1607 drawn) with separate bypass					Replaces
					Replaced by
					Date 120301
					Draw no. 4917 Edition A

**HYDROTECH**