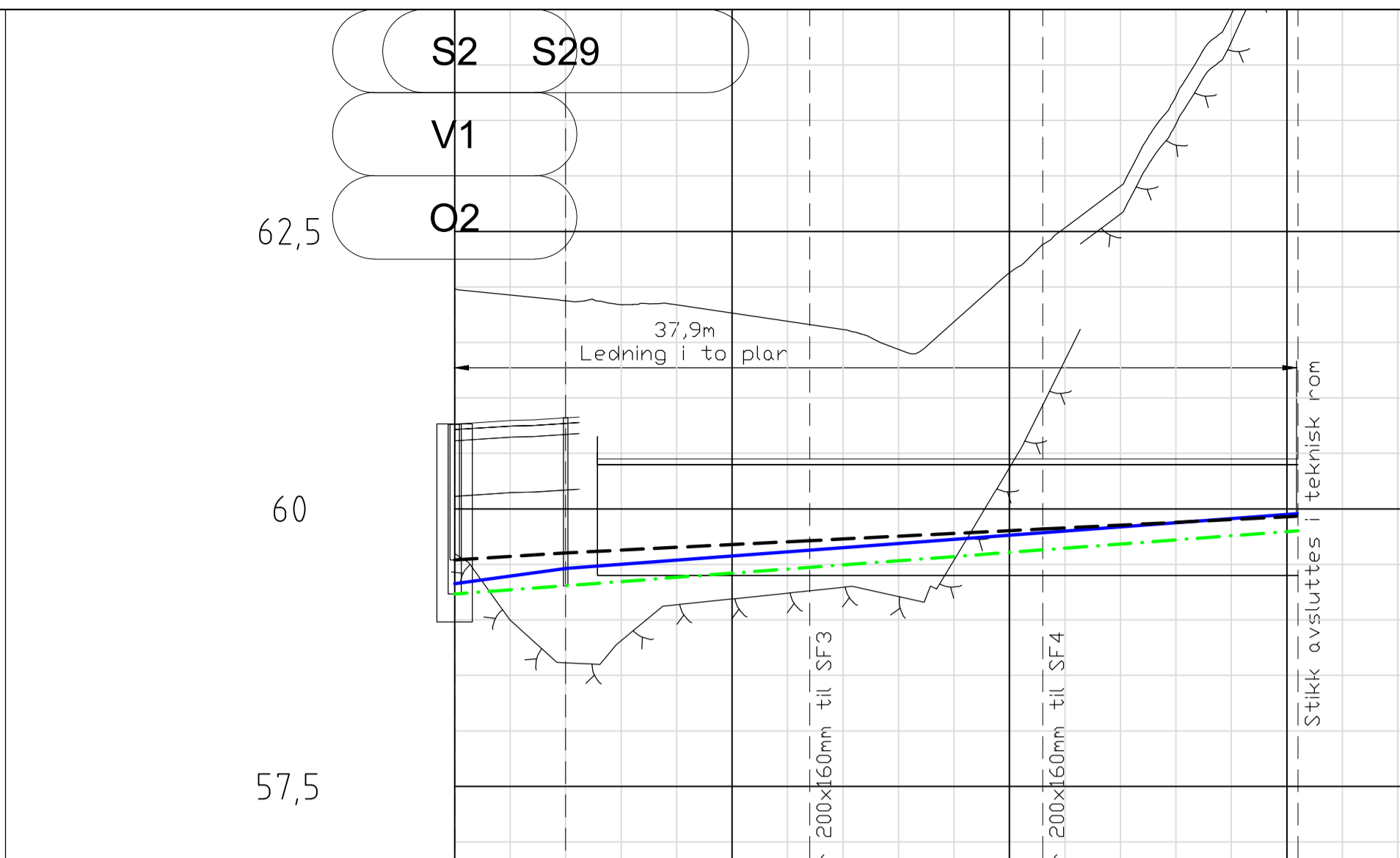


PROFIL NR. 188/775 Vegbane

Markslag: 188/775 Vegbane

Grunnforhold: Sprengsteinsfylling på fjell

TERRENG H./TOPP VEGDEKKE	69,09	70,07	71,05	72,03	73,01	74,00	75,00	76,00	77,00	78,00	79,00	80,00
Hor. vinkelpunktavstand i m	9,0	8,0	8,3	12,7	3,0	9,0	9,0	3,0	10,0	9,7	14,5	83,55
Kumavstand i m		8,0	16,3	29,0	32,0	41,0	50,0	53,0	63,0	72,7	87,2	170,75
Fall i ‰		0,0	29,6	5,5	15,0	23,3	12,4	15,0	10,0	9,7	14,5	1,7
Kote utv. topp	69,09	69,09	69,55	72,52	72,52	75,53	75,53	78,53	88,53	88,53	93,03	170,75
Type og dim					50PE 80 SDR 11							
Kumavstand i m		8,4	16,8	29,2	32,6	41,0	50,4	53,8	63,2	72,6	87,0	170,4
Fall i ‰		12,9	9,6	5,5	15,0	23,3	12,4	15,0	10,0	9,7	14,5	1,7
Kote utv. topp	69,53	69,53	69,53	72,52	72,52	75,53	75,53	78,53	88,53	88,53	93,03	170,75
Type og dim		50PE 80 SDR 11										
Kumavstand i m		9,0	17,0	29,0	32,0	41,0	50,0	53,0	63,0	72,7	87,2	170,75
Fall i ‰		15,1	15,0	5,5	15,0	23,3	12,4	15,0	10,0	9,7	14,5	1,7
Kote innv. bunn	59,53	59,53	59,53	59,53	59,53	59,53	59,53	59,53	59,53	59,53	59,53	59,53
Type og dim		160PVC SN8										
Kumavstand i m		8,5	17,0	29,5	33,0	42,0	51,0	54,0	64,0	73,5	88,0	171,25
Fall i ‰		10,0	10,0	5,5	10,0	23,3	12,4	10,0	10,2	9,4	14,5	1,7
Kote innv. bunn	59,53	59,53	59,53	59,53	59,53	59,53	59,53	59,53	59,53	59,53	59,53	59,53
Type og dim												200PVC SN8

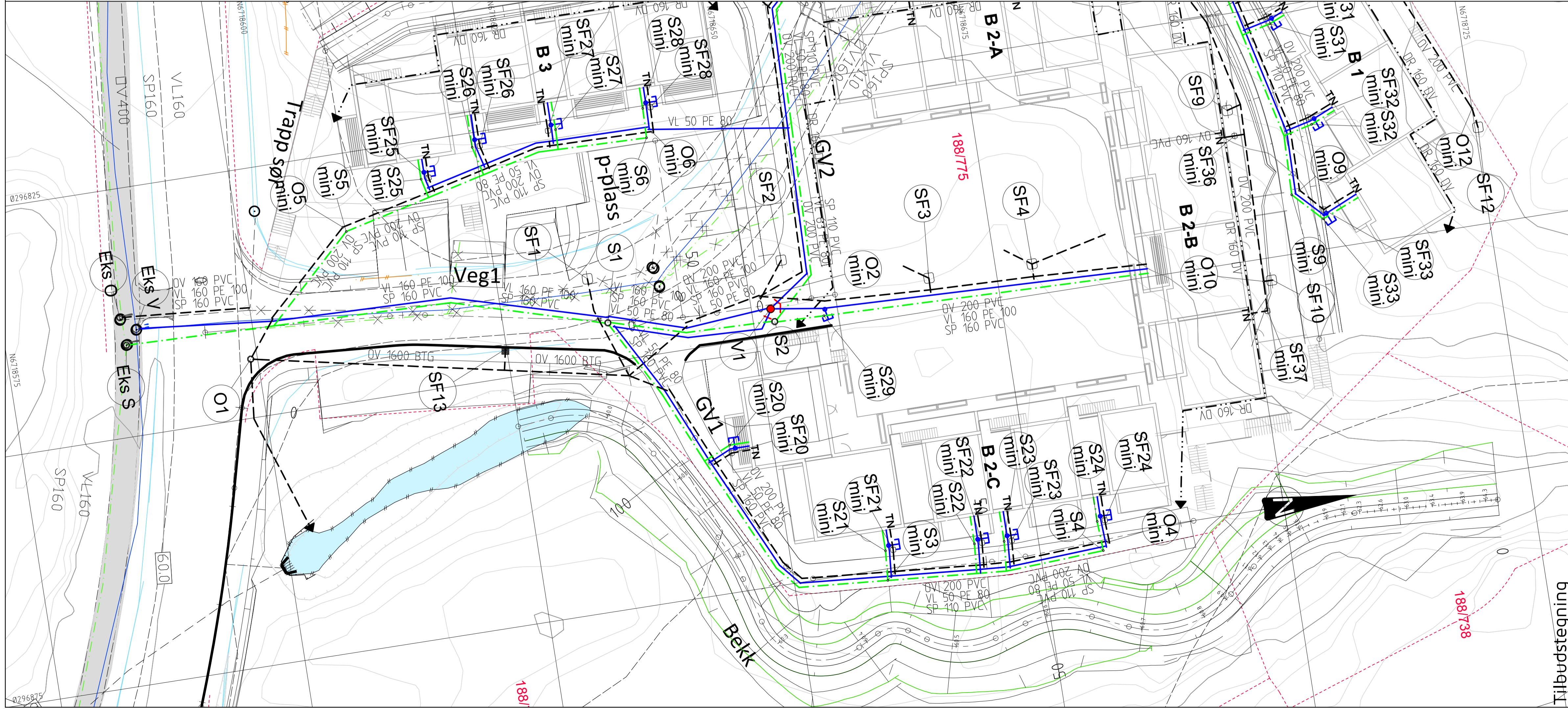


PROFIL NR. 188/775 Garage

Markslag: 188/775 Garage

Grunnforhold: Sprengsteinsfylling på fjell

TERRENG H./TOPP VEGDEKKE	92,09	108,09	78,09	57,09	57,09	57,09	60,55	57,09	57,09	57,09	57,09
Hor. vinkelpunktavstand i m	5,0	5,0	33,0	5,0	33,0	15,0	33,0	5,0	33,0	15,0	33,0
Kumavstand i m	5,0	10,0	43,0	48,0	81,0	96,0	129,0	134,0	167,0	182,0	215,0
Fall i ‰	25,8	25,8	15,0	15,0	15,0	15,0	15,0	15,0	15,0	15,0	15,0
Kote utv. topp	97,09	97,09	97,09	97,09	97,09	97,09	97,09	97,09	97,09	97,09	97,09
Type og dim			160PE 100 SDR 11								
Kumavstand i m		5,0	38,0	43,0	76,0	91,0	124,0	129,0	162,0	177,0	210,0
Fall i ‰		25,8	15,0	15,0	15,0	15,0	15,0	15,0	15,0	15,0	15,0
Kote innv. bunn	59,53	59,53	59,53	59,53	59,53	59,53	59,53	59,53	59,53	59,53	59,53
Type og dim			160PVC SN8								
Kumavstand i m		5,2	38,2	43,2	76,2	91,2	124,2	129,2	162,2	177,2	210,2
Fall i ‰		10,0	10,0	10,0	10,0	10,0	10,0	10,0	10,0	10,0	10,0
Kote innv. bunn	59,53	59,53	59,53	59,53	59,53	59,53	59,53	59,53	59,53	59,53	59,53
Type og dim			200PVC SN8								



TEGNFORKLARING

Eksisterende	Prosjektert
	Vannledning (VL)
	Spillvannledning (SP)
	Overvannledning (OV)
	Drenledning (DR)
	Ledning utgår
	Stakekum (S/O)
	Ministakekum (S/O mini)
	Vannledningskum m/brann- og stengeventil (V)
	Stoppekran på vannledning
	Hydrant (HY)
	Sandfangskum m/kuppelrist (SF)
	Sandfangskum m/kjeflesluk (SF)
	Sandfangskum m/ristløkk (SF)
	Bekkeinntak m/rist
	Utslipp til bekk/terreng
	Taknedløp
	TN

Rev. Dato Sign. Revisjonen gjelder

Oppdragsgiver: **Orion Prosjekt AS**

Prosjekt: **Langheiane boligfelt B8**

Dato: 07.03.2017

Målestokk: 1:250/50

Formål: A1

Prosjekt nr.: 8016

Tegningsnr.: GH03

Fabrikkgaten 7B
5059 Bergen
Tlf. 55 59 82 60
e-post: post@haugenvva.no