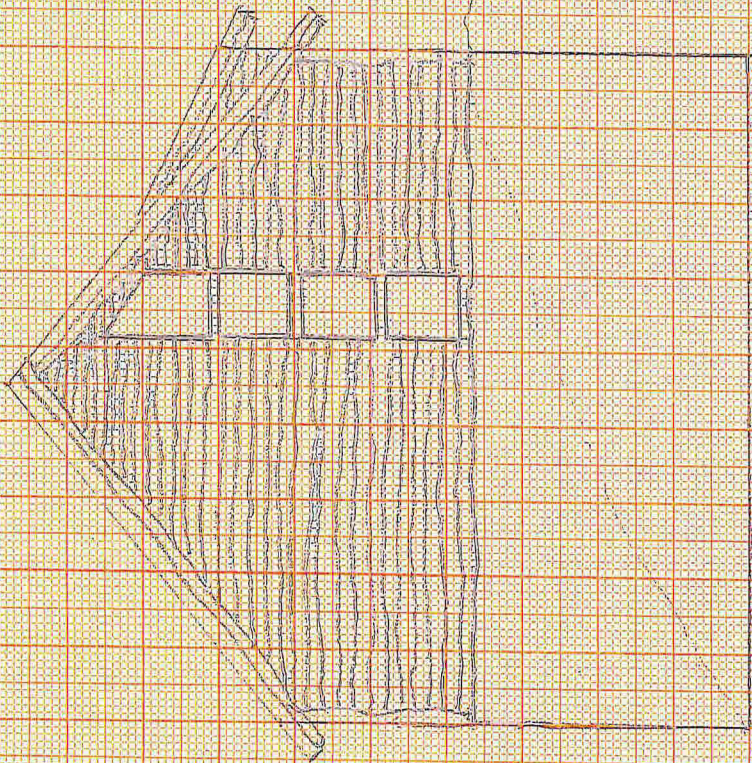
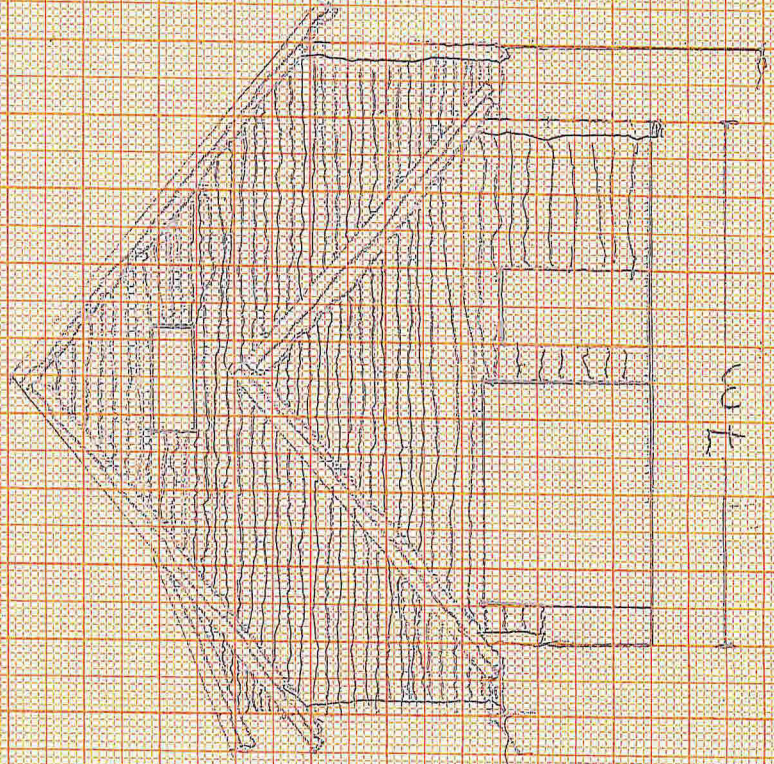


vedlegg 4

9.00

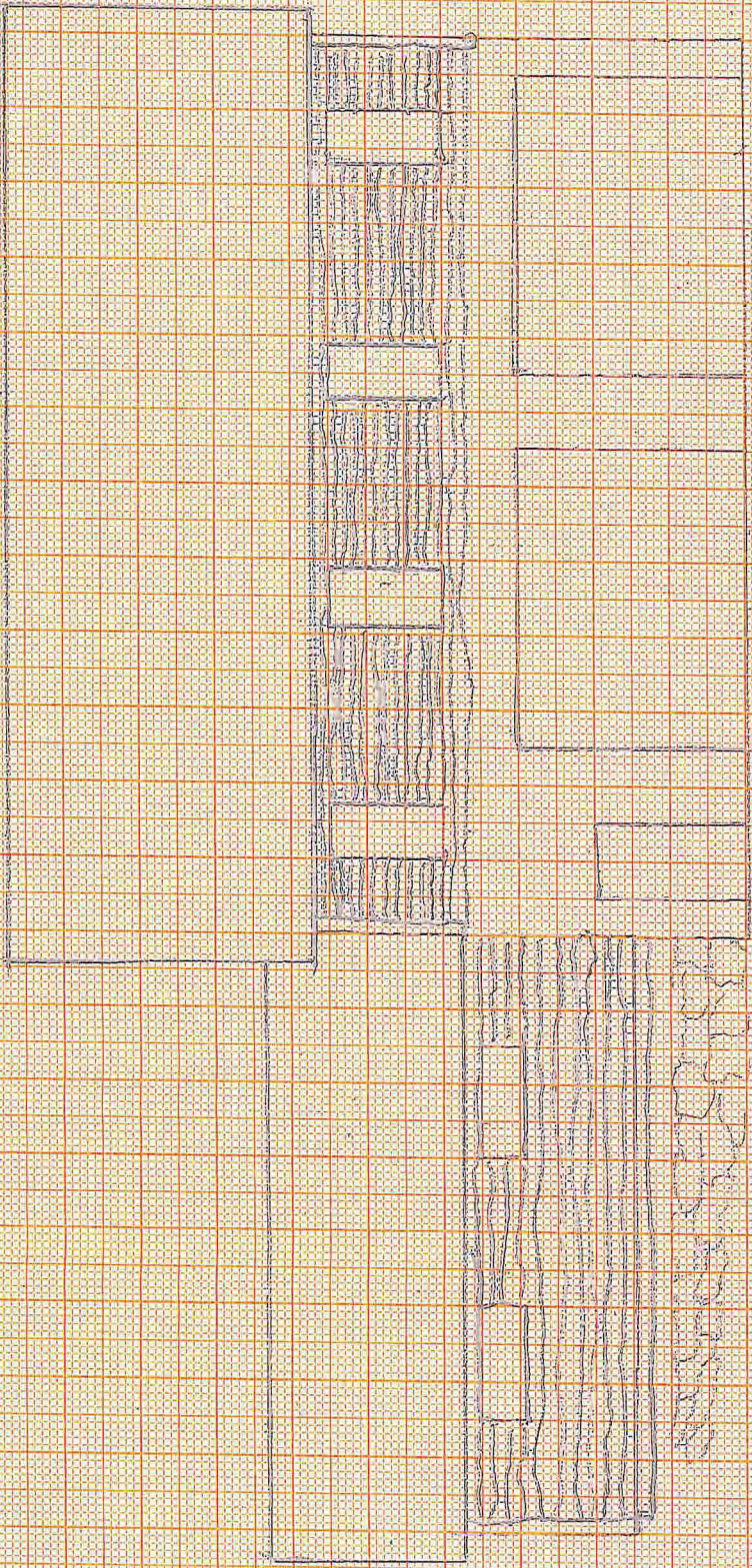


SØR

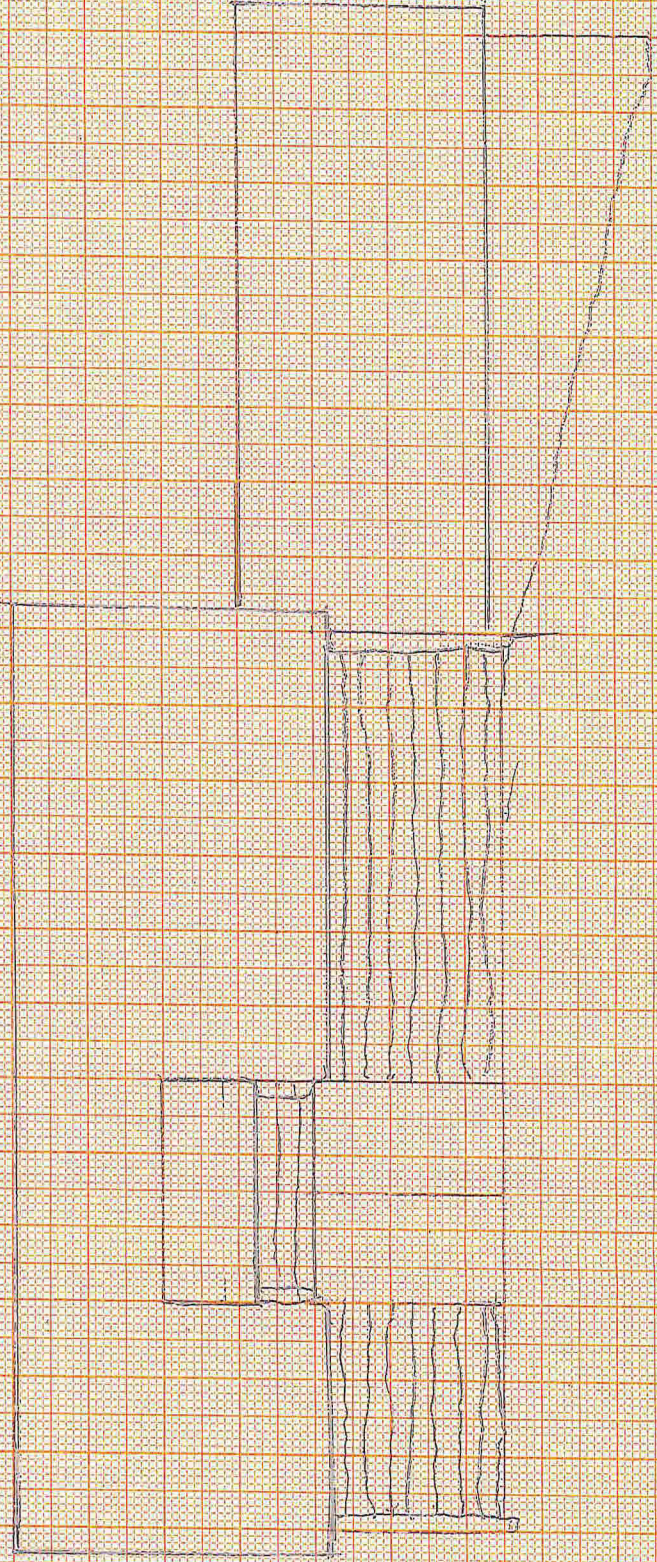


NORD

7m



VEST



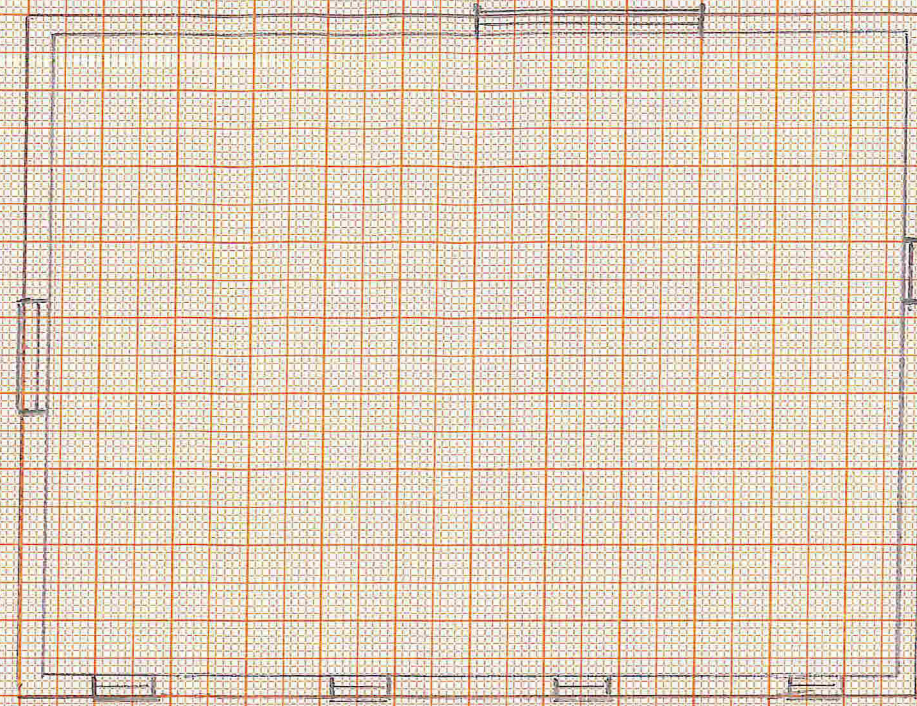
AUST

12m

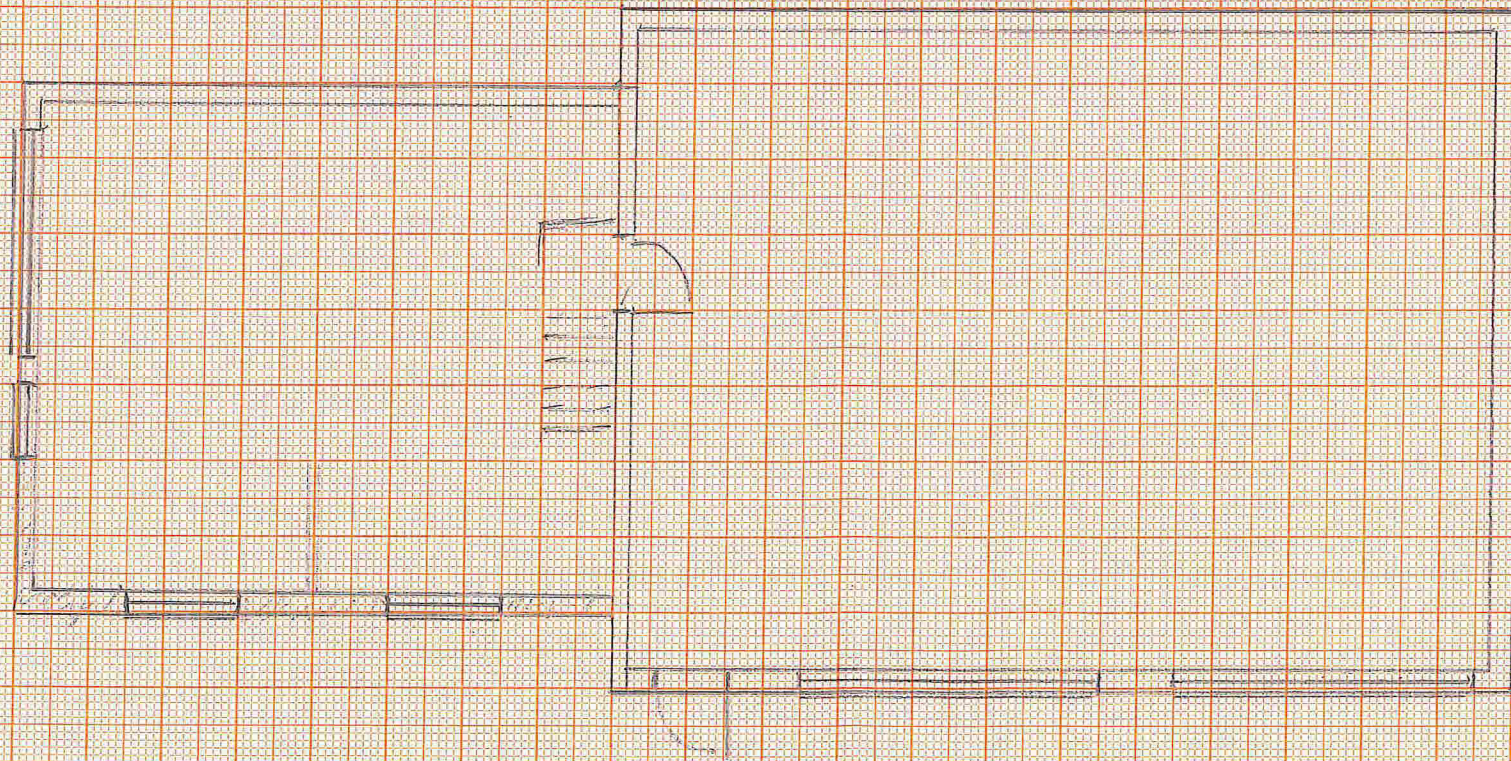
8m

vedlegg 5

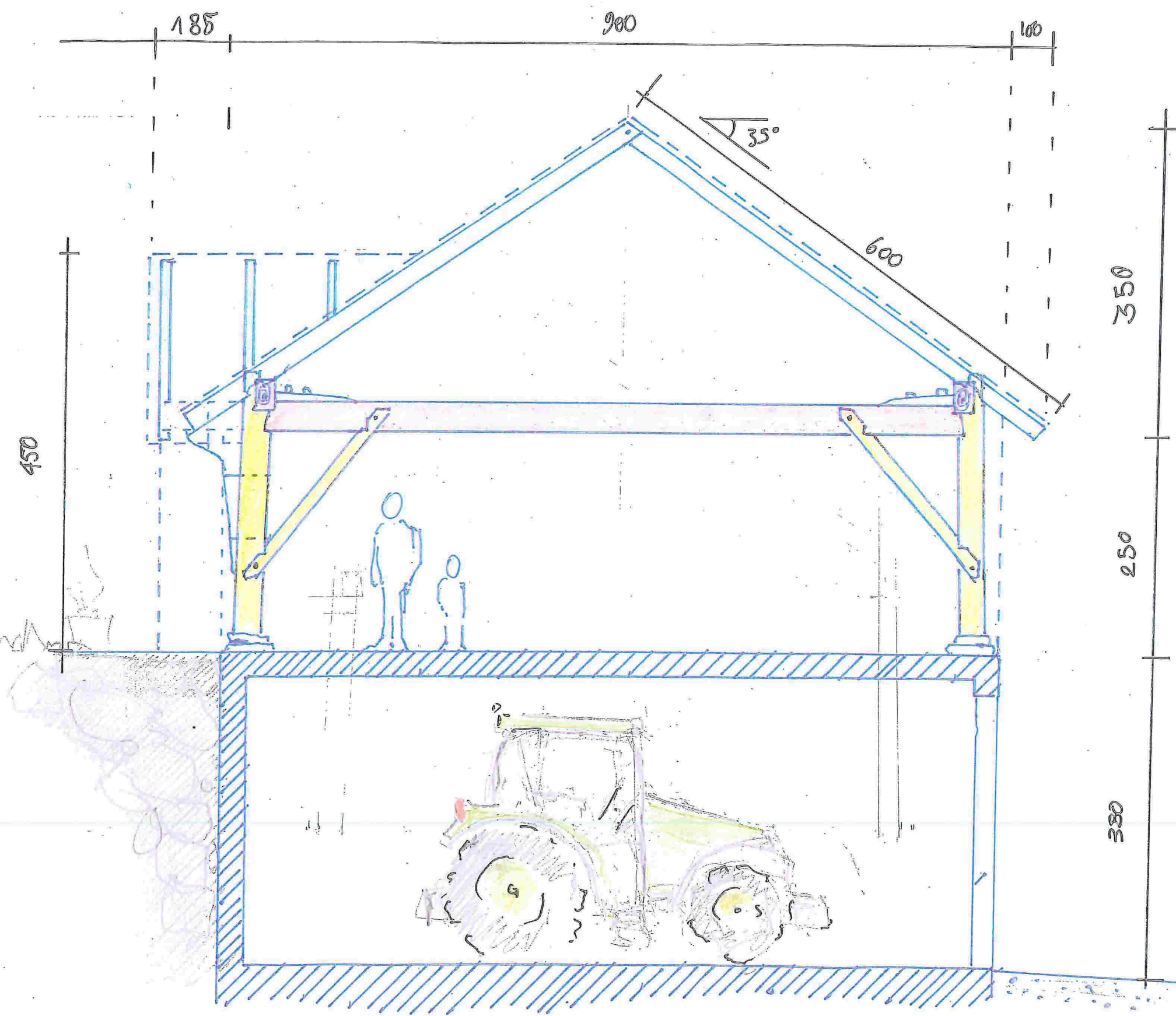
2 etg



1 etg



vedlegg 6



- LØS
- SPERRE 5x7 (FURU) 28x6m
  - BETE 8x12 4x9.30m
  - STAVLÆGJE 10x12 4x7m
  - STAV 12x12 8x2.80m
  - SNEDBÅND 4x6 20x2.50m (FURU)

- TILBYGG
- SPERRE : 4x6 (FURU) 18x3.50m
  - BETE : 8x10 3x7.80m
  - STAVLÆGJE : 8x10 4x5m
  - STAV : 10x10 6x3m
  - SNEDBÅND : 3x5 (FURU) 14x2.20m

