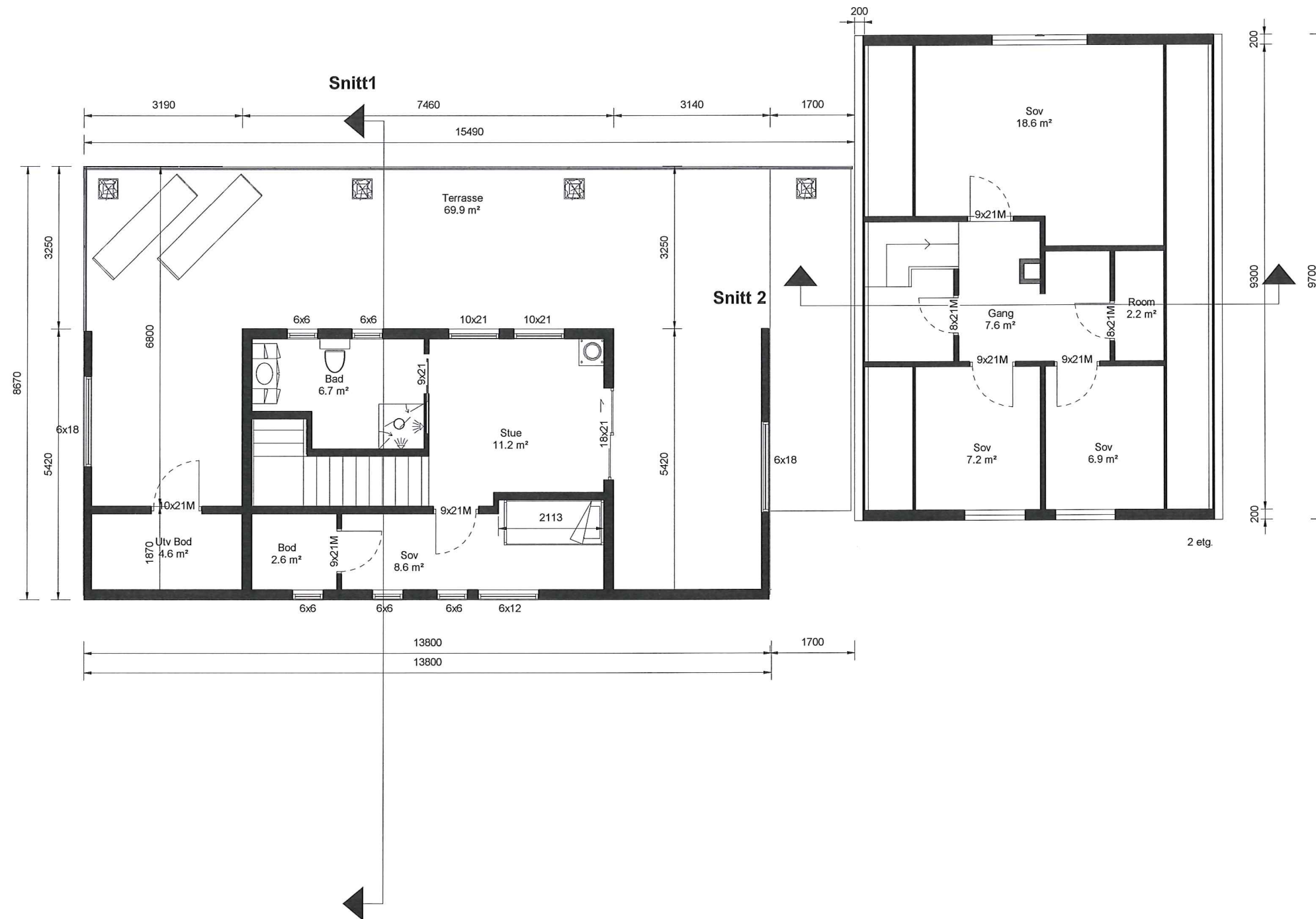


Areal BYA		Areal BRA	
Gamle BYA:	71,8m ²	Beskrivelse:	Areal:
NYTT BYA:	130,3m ²	Kjeller:	61,2m ²
TOTAL:	202,1m ²	1etg:	65,1m ²
		2etg:	59m ²
		TOTAL Gamle BRA:	185,3m ²
		Nytt BRA 1etg:	116m ²
		Nytt BRA 2etg:	40m ²
		S-ROM (Terrasse):	69,9m ²
		TOTAL	341,3m ²
		Gamle + NYTT BRA:	(Terrasse 69,9m ²)



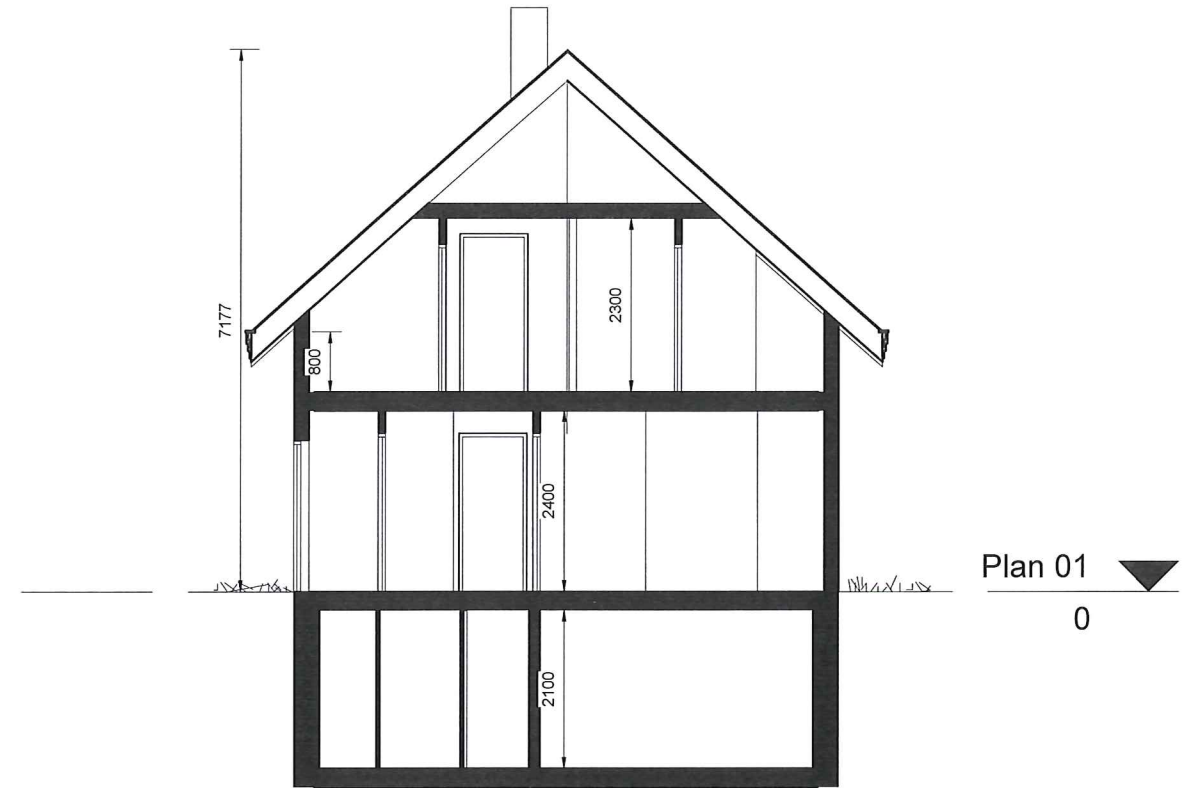




1 Vest
1 : 100



2 Øst
1 : 100



3 Snitt 2
1 : 100
Snitt - eksisterende bolig

