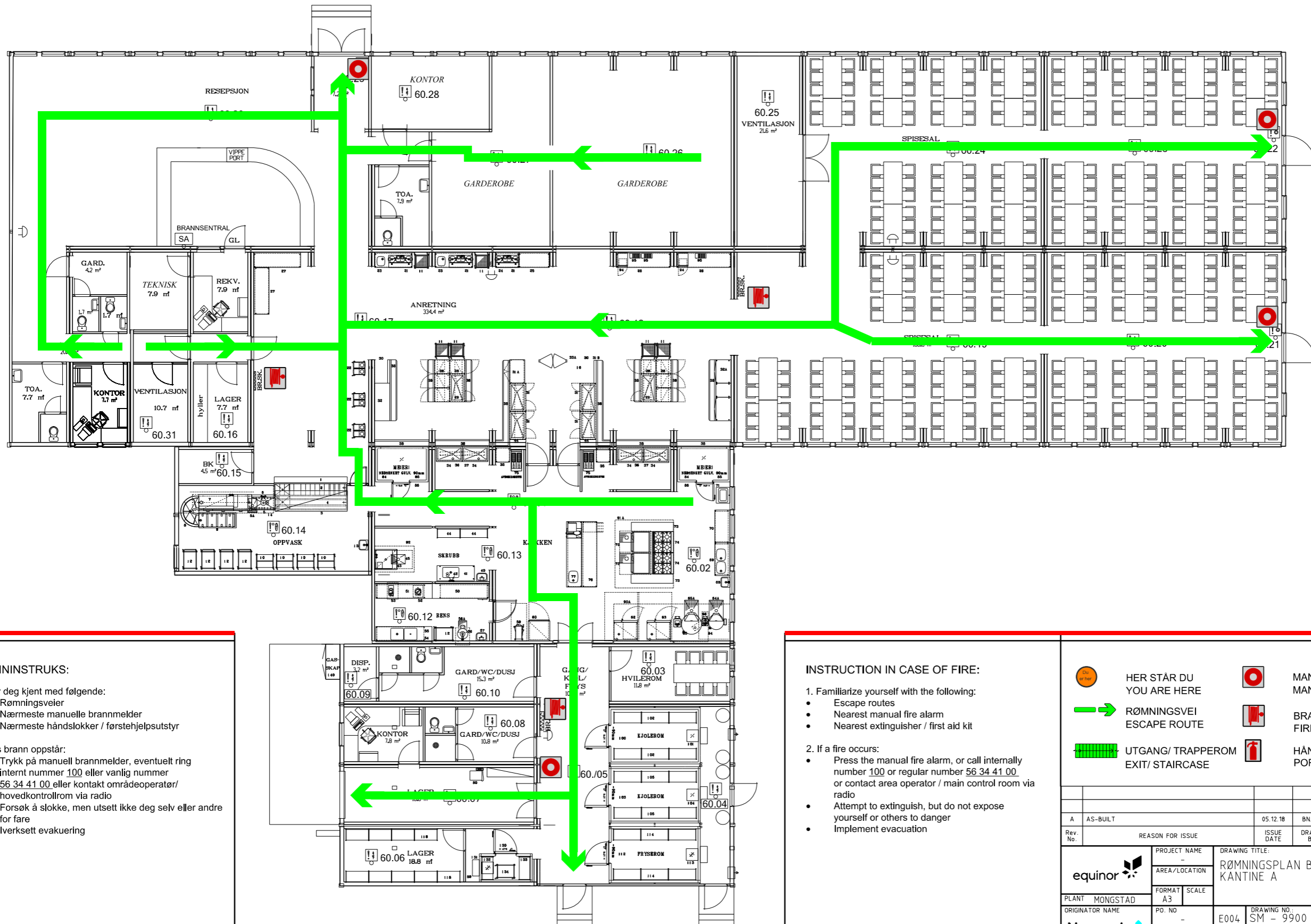


# RØMNINGSPLAN/ EVACUATION PLAN



## BRANNINSTRUKS:

- Gjør deg kjent med følgende:
  - Rømningsveier
  - Nærmeste manuelle brannmelder
  - Nærmeste håndslukker / førstehjelpsutstyr
- Hvis brann oppstår:
  - Trykk på manuell brannmelder, eventuelt ring internt nummer 100 eller vanlig nummer 56 34 41 00 eller kontakt områdeoperatør/ hovedkontrollrom via radio
  - Forsøk å slukke, men utsett ikke deg selv eller andre for fare
  - Iverksett evakuering

## INSTRUCTION IN CASE OF FIRE:

- Familiarize yourself with the following:
  - Escape routes
  - Nearest manual fire alarm
  - Nearest extinguisher / first aid kit
- If a fire occurs:
  - Press the manual fire alarm, or call internally number 100 or regular number 56 34 41 00 or contact area operator / main control room via radio
  - Attempt to extinguish, but do not expose yourself or others to danger
  - Implement evacuation

-  HER STÅR DU  
YOU ARE HERE
-  MANUELL BRANNMELDER  
MANUAL CALL POINT
-  RØMNINGSVEI  
ESCAPE ROUTE
-  BRANNSLANGE  
FIRE HOSE
-  UTGANG/ TRAPPEROM  
EXIT/ STAIRCASE
-  HÅNDSLUKKER  
PORTABLE FIRE EXTINGUISHER

A AS-BUILT		05.12.18	BNJAC	BOTVE	JF	ANKI
Rev. No.	REASON FOR ISSUE		ISSUE DATE	DRAWN BY	CHECKED BY	PROJECT APPROVAL
equinor		PROJECT NAME		DRAWING TITLE:		
PLANT MONGSTAD		AREA/LOCATION		RØMNINGSPLAN BU-9967		
ORIGINATOR NAME		FORMAT A3		KANTINE A		
Norconsult		SCALE		DRAWING NO.:		
ORIGIN DRW. NO.:		PG. NO.		SM - 9900 - S - P - 008 - 01 A		
PROJECT NO.	ORIGIN CODE	SYSTEM CODE	DISC. CODE	DRW. TYPE	SEQUENCE NO.	SHT. NO. REV. NO.