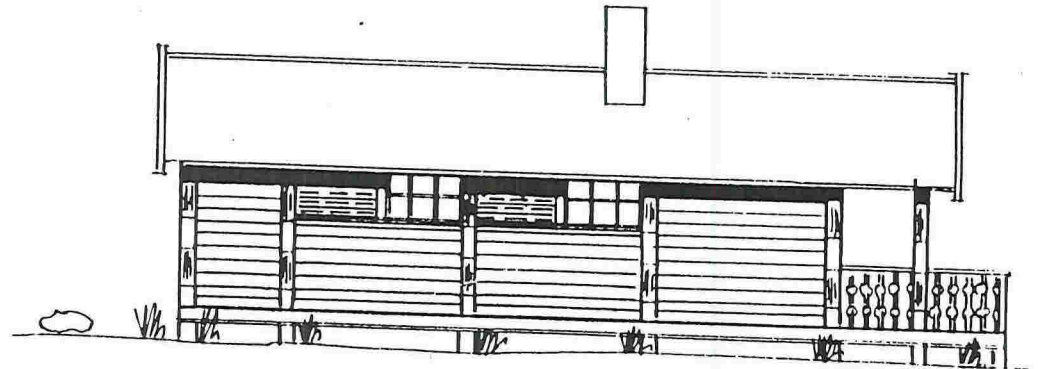
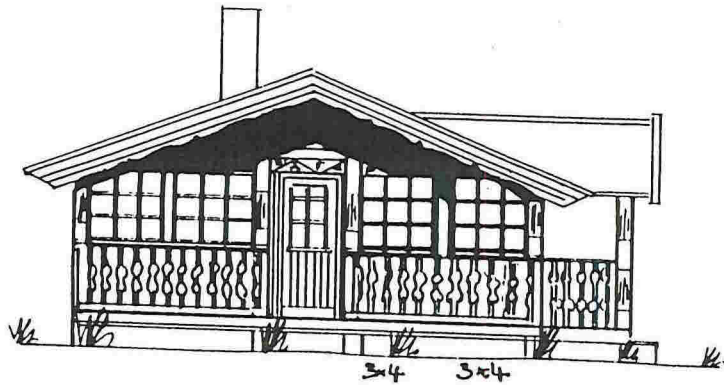
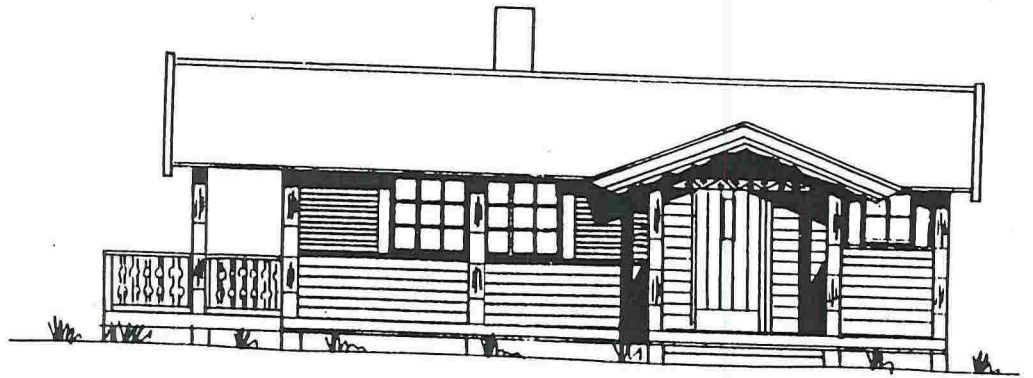
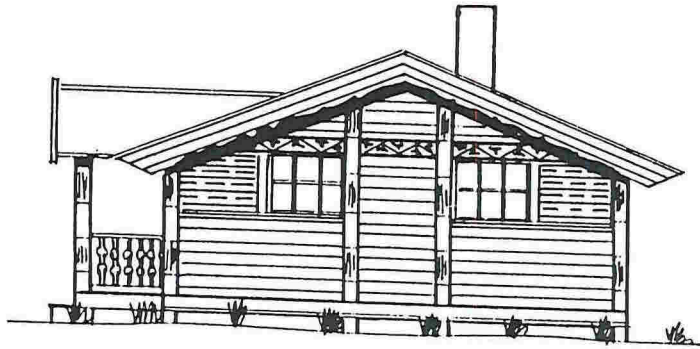


E1 av 2



REV. 18.06.91

RUSÅNES FABRIKKER

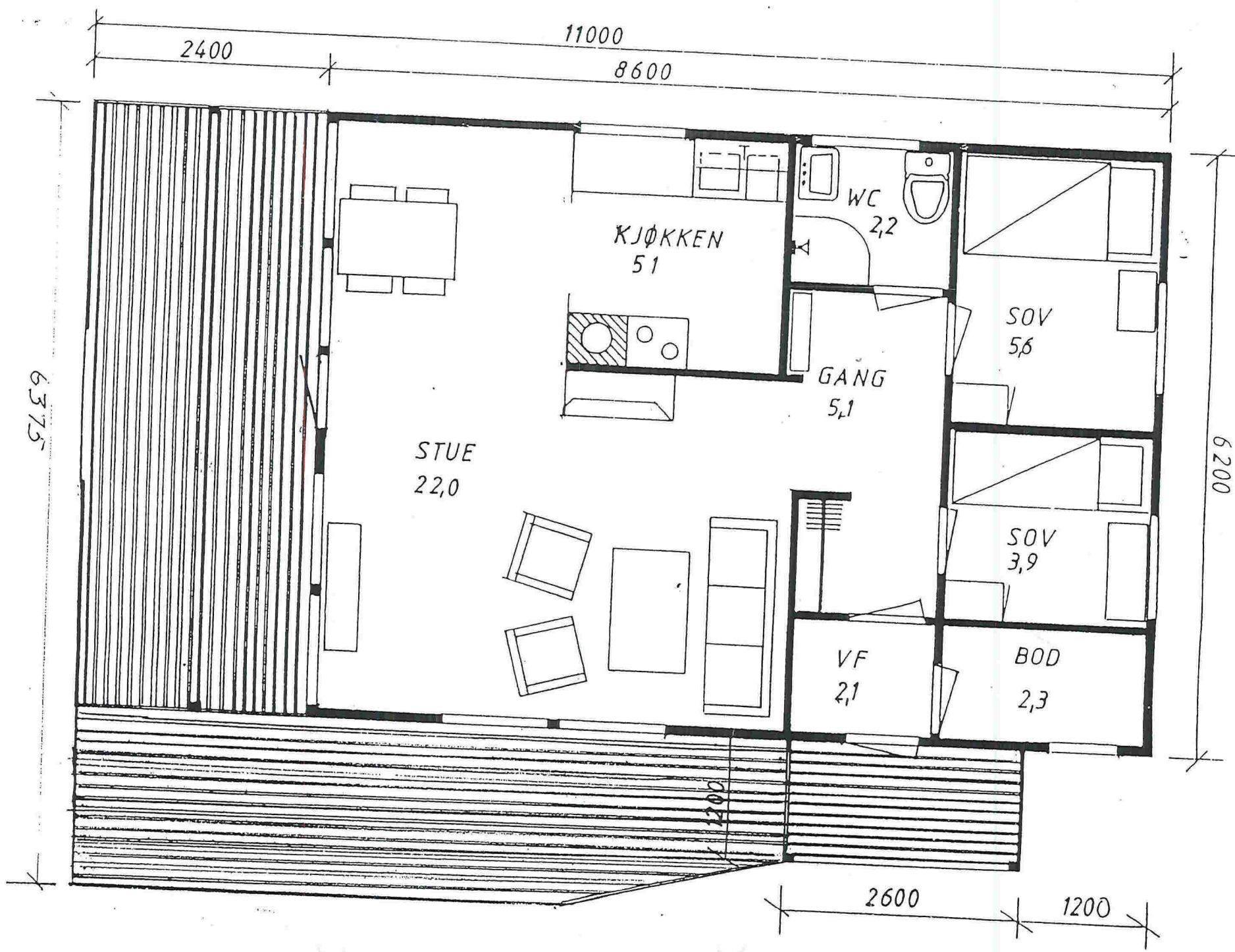
Saltdalshytta

Type: "Saltfjell" nr 3001.2

Byggh

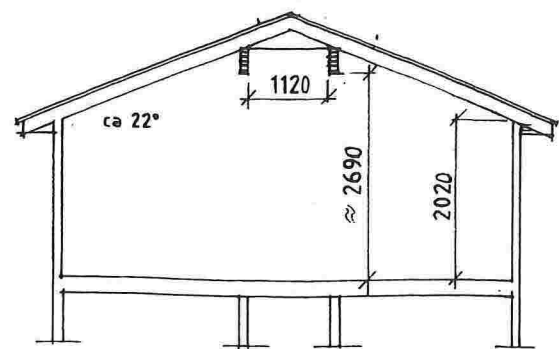
M 1 100 10.01.84. P.M.B.

E 2 av 2

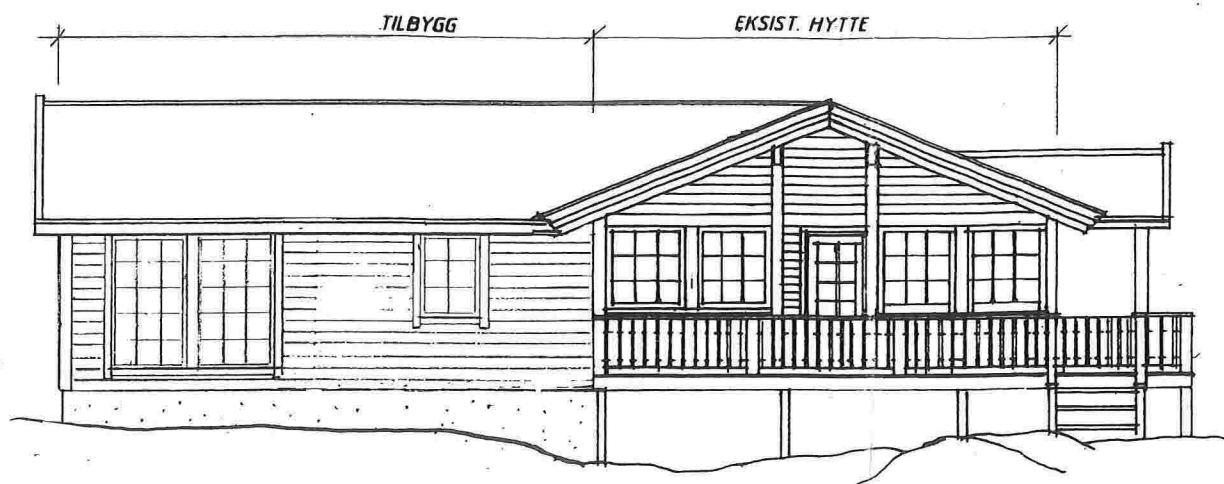




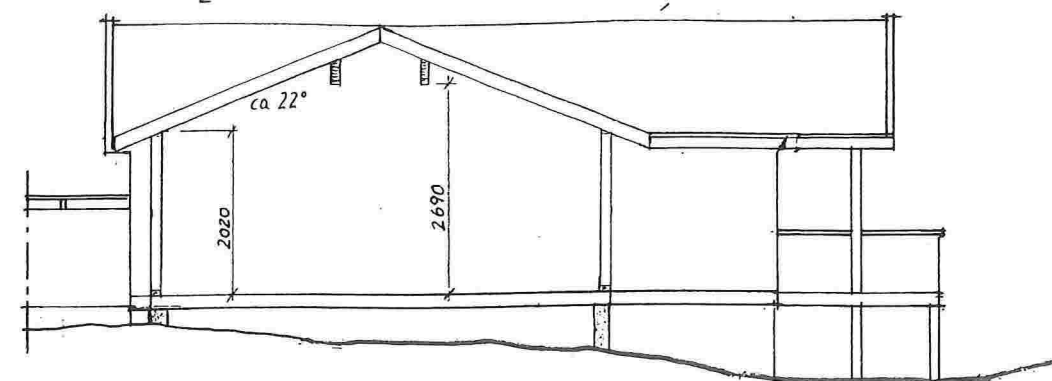
E2



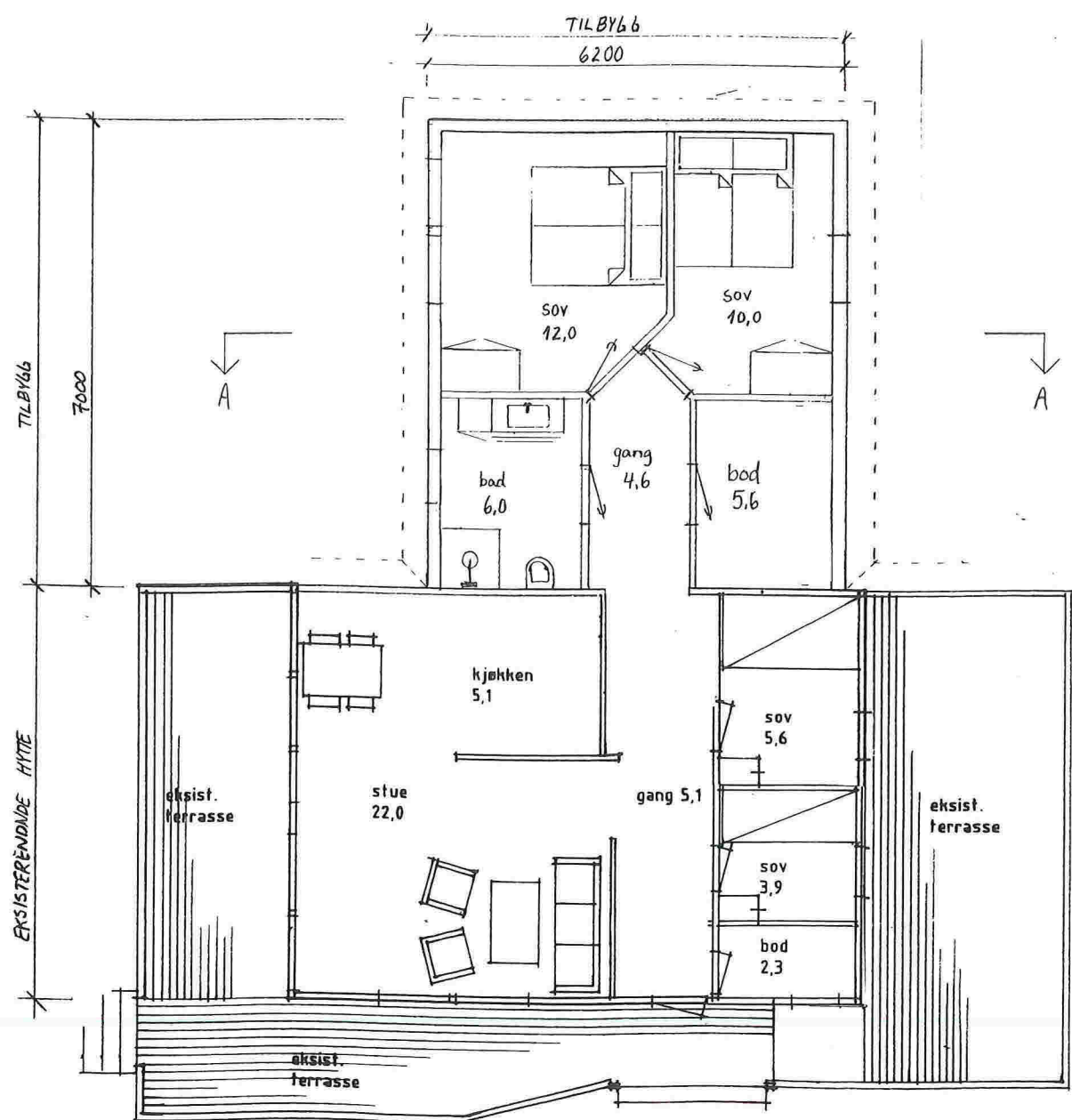
SNITT EKSIST. HYTTE



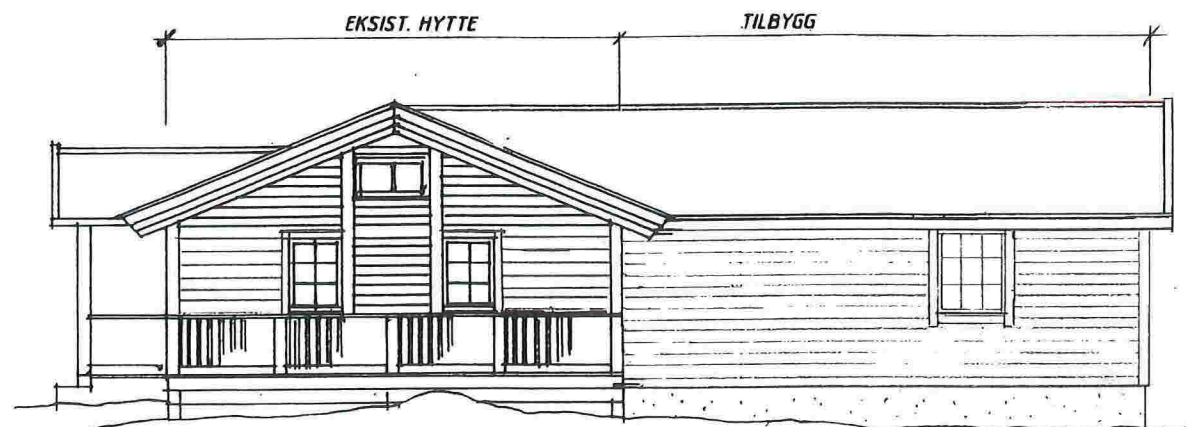
FASADE MOT NORDVEST



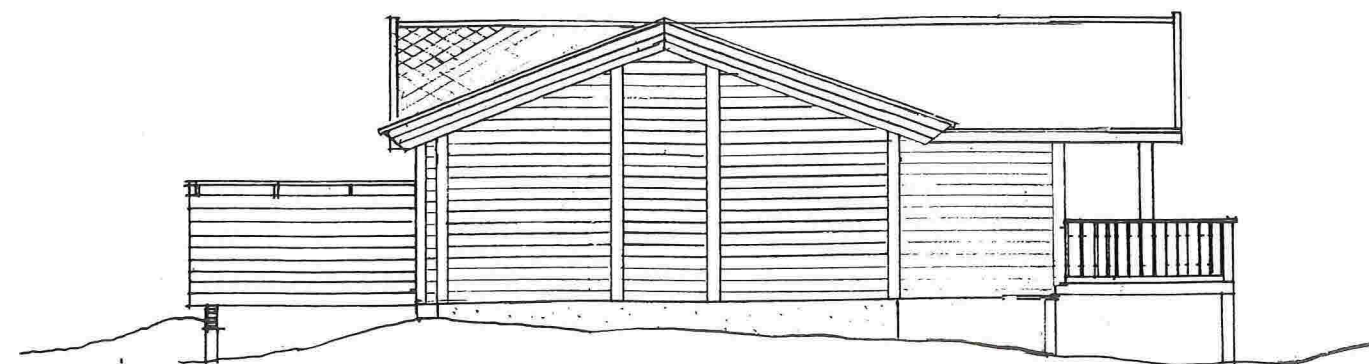
SNITT A-A



PLAN



FASADE MOT SØRØST



FASADE MOT NORDØST

Dato	Rev	BRA tilbygg	BYA tilbygg	Tegn.	Målestokk
08.01.2019		39,5 m <sup>2</sup>	43,4 m <sup>2</sup>	S.F.H	1:100
					Målenhet
					mm
<b>Nils Johan Foss</b>				Gnr. 60 / Bnr. 47	
Tilbygg på hytte - Plan, snitt og fasader				Lindås kommune	

