

Kunde:
Inger Marie Jordal

Designer:
Eirin J. Berg

Dato:
29.05.2018

FAGERHULT

Lindås Kommune
Inger.Marie.Jordal@lindas.k
ommune.no

Fagerhult Belysning AS
Johan Berentsens vei 4
5160 Laksevåg
90693059
eibe@fagerhult.no

Alversund Skole Utendørs

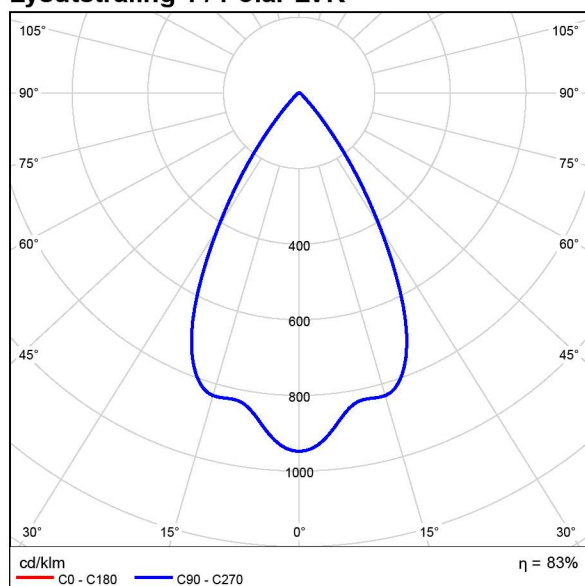
WE-EF 139-1964 FLC260 [B] IP66:LED-36/155W/4K 36xLED-36/155W/840 - 4000K

IP66, Class I. IK07. Marine-grade die-cast aluminium alloy. 5CE superior corrosion protection including PCS hardware. Silicone rubber gaskets. Safety glass lens. PMMA-LED lens array.

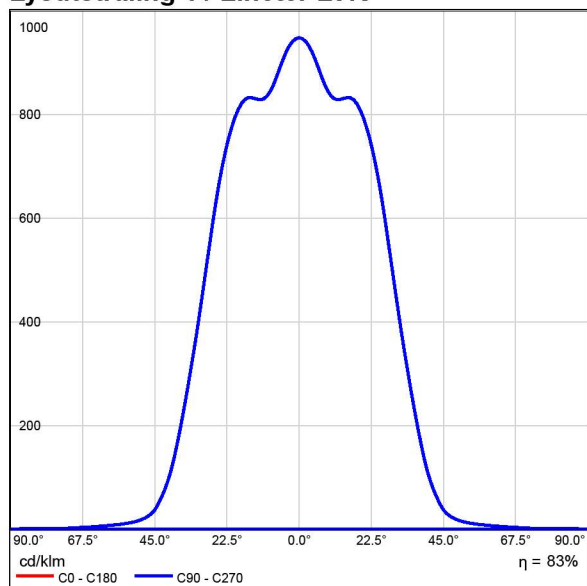


Driftsvirkningsgrad: 83.02%
Lampelysmengde: 20720 lm
Armaturlysstrøm: 17201 lm
Effekt: 169.0 W
Lysutbytte: 101.8 lm/W

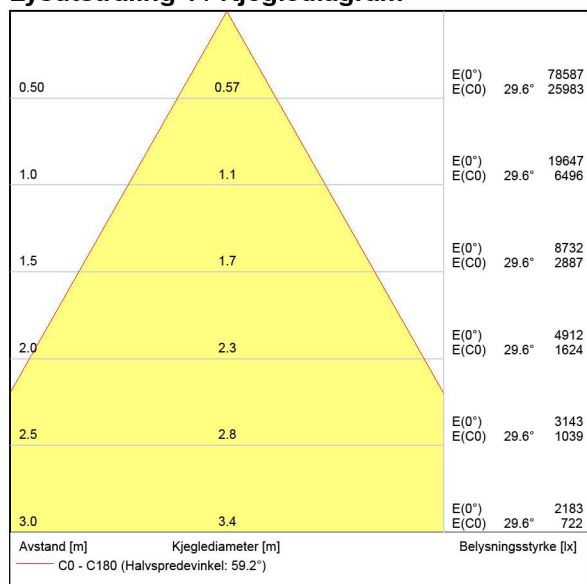
Fargemetriske opplysninger
36xLED-36/155W/840 - 4000K: CCT 4000 K, CRI 80

Lysutstråling 1 / Polar LVK

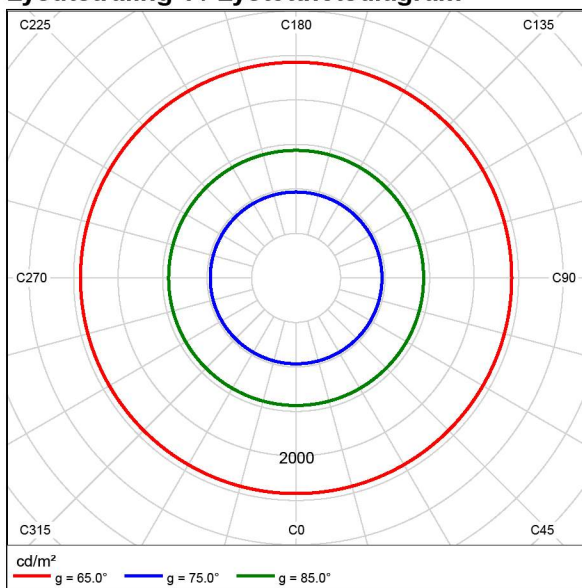
Lysutstråling 1 / Lineær LVK



Lysutstråling 1 / Kjeglediagram

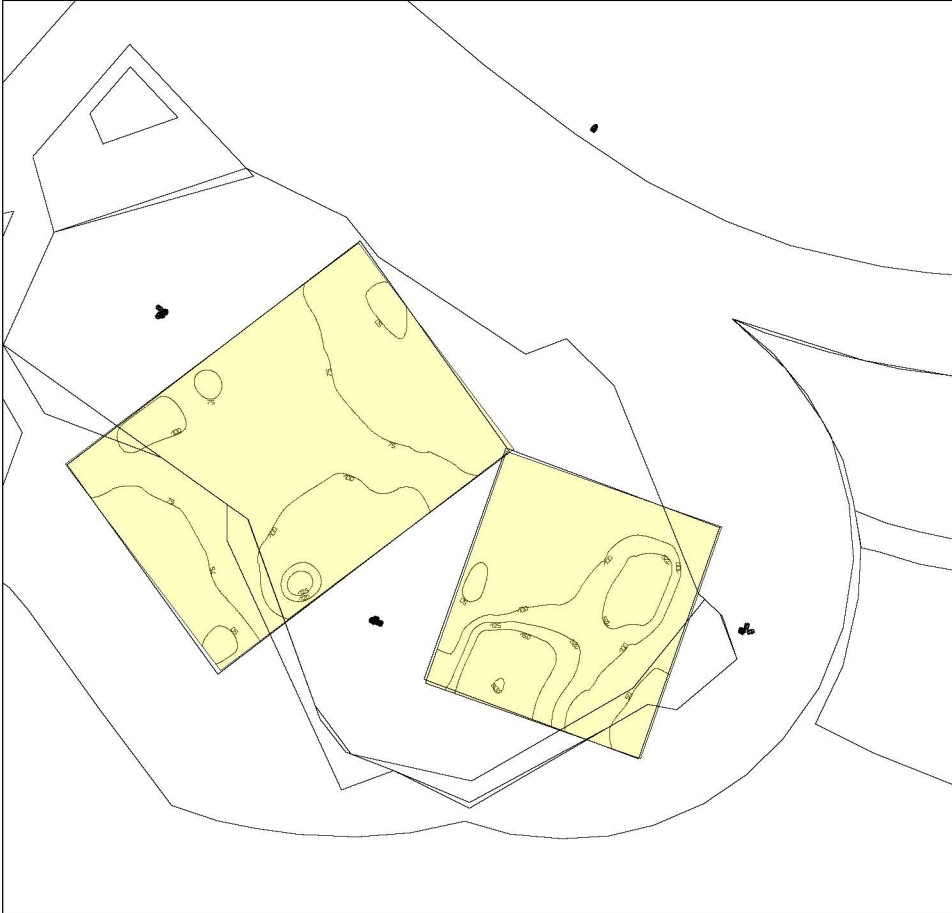


Lysutstråling 1 / Lystetthetsdiagram



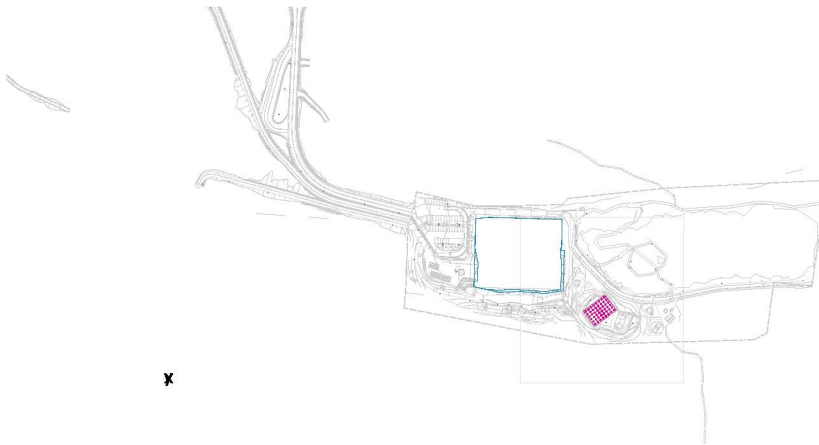
Areal 1

Utsnitt - Ballbaner



Målestokk: 1 : 500

Fotballbane / Perpendikulær belysningsstyrke



Forminskningsfaktor: 0.90

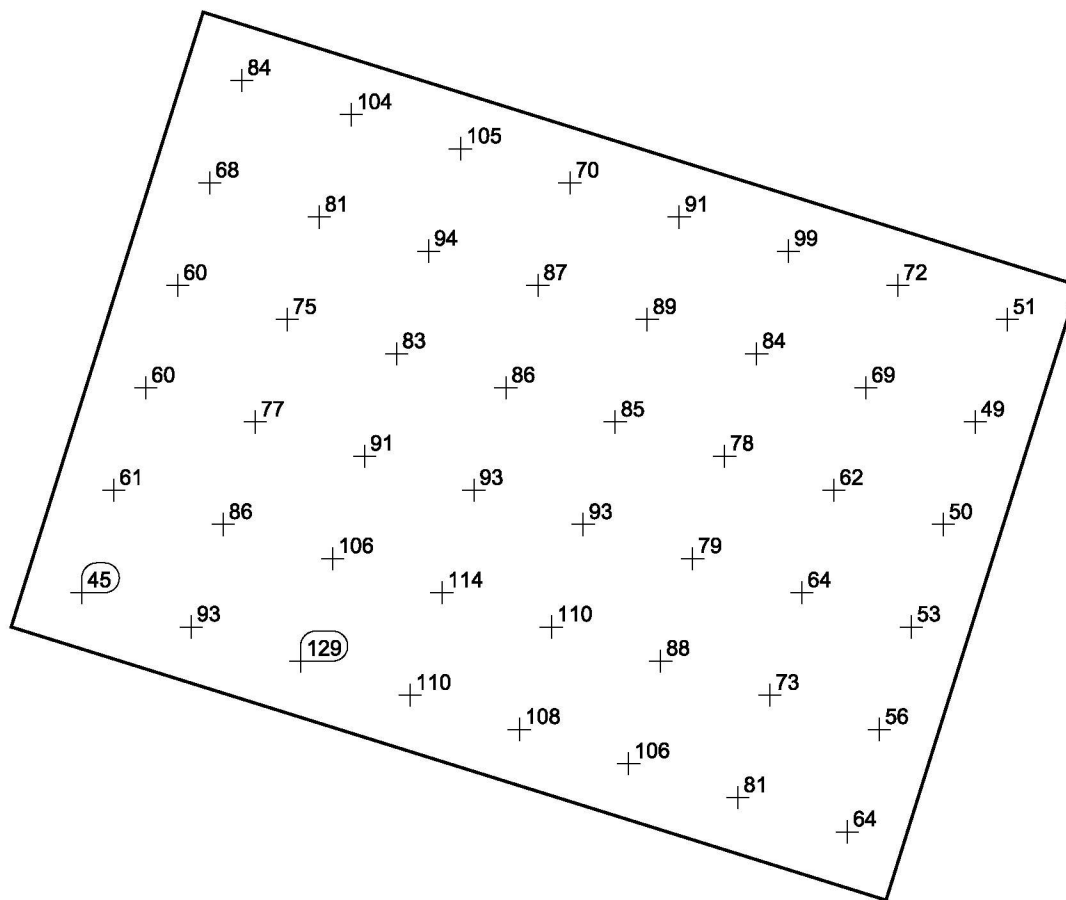
Fotballbane: Perpendikulær belysningsstyrke (Målepunkter)

Lysriss: Lysriss 1

Midlere: 81.5 lx, Min.: 45.1 lx, Maks.: 129 lx, Min./middels: 0.55, Min./maks.: 0.35

Høyde: 0.00 m

Verdiraster [lx]

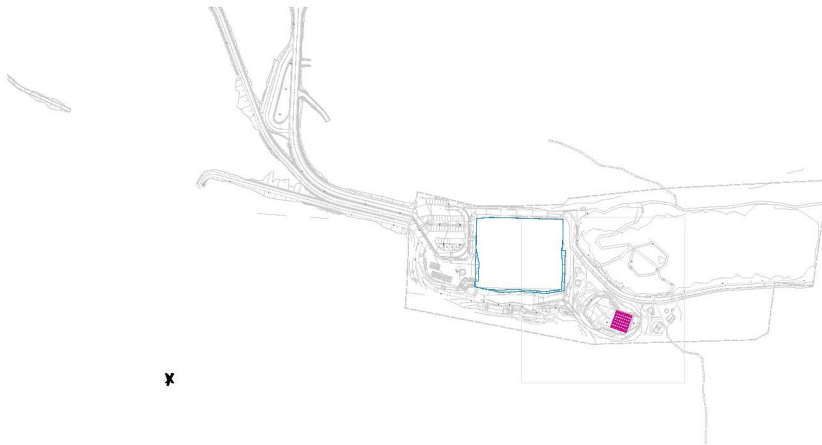


Målestokk: 1 : 200

Verditabeller [lx]

m	-10.628	-7.591	-4.555	-1.518	1.518	4.555	7.591	10.628
7.111	83.9	104	105	69.7	90.6	99.1	72.1	51.0
4.267	68.4	80.7	93.5	86.8	89.1	83.5	68.8	49.2
1.422	60.0	75.3	83.2	85.9	84.7	77.5	62.4	50.2
-1.422	60.0	76.7	90.8	93.3	92.9	79.5	63.5	52.6
-4.267	60.5	85.6	106	114	110	88.3	73.1	56.3
-7.111	55.1	92.7	129	110	108	106	81.5	63.8

Basketbane / Perpendikulær belyningsstyrke



Forminskningsfaktor: 0.90

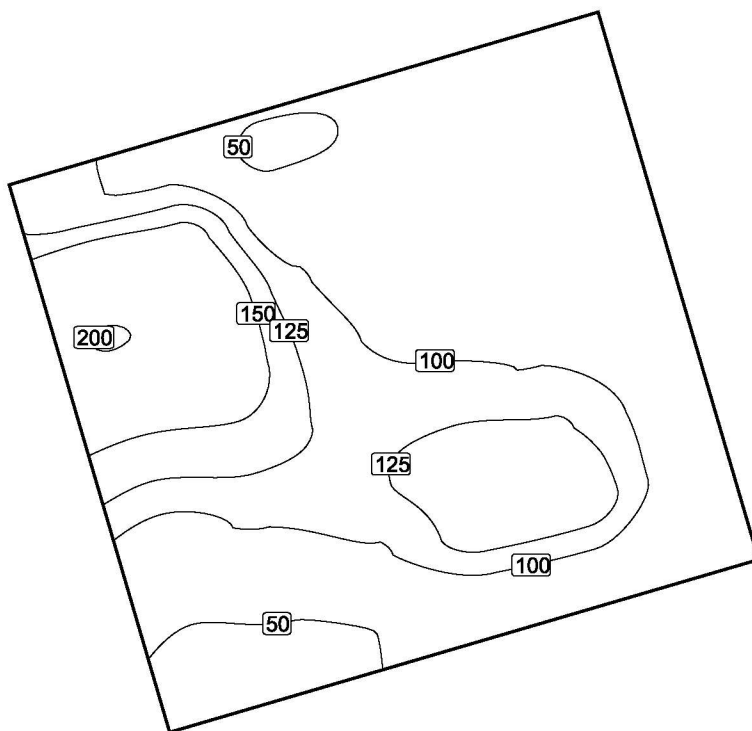
Basketbane: Perpendikulær belyningsstyrke (Målepunkter)

Lysriss: Lysriss 1

Midlere: 87.0 lx, Min.: 32.2 lx, Maks.: 02 lx, Min./middels: 0.43, Min./maks.: 0.16

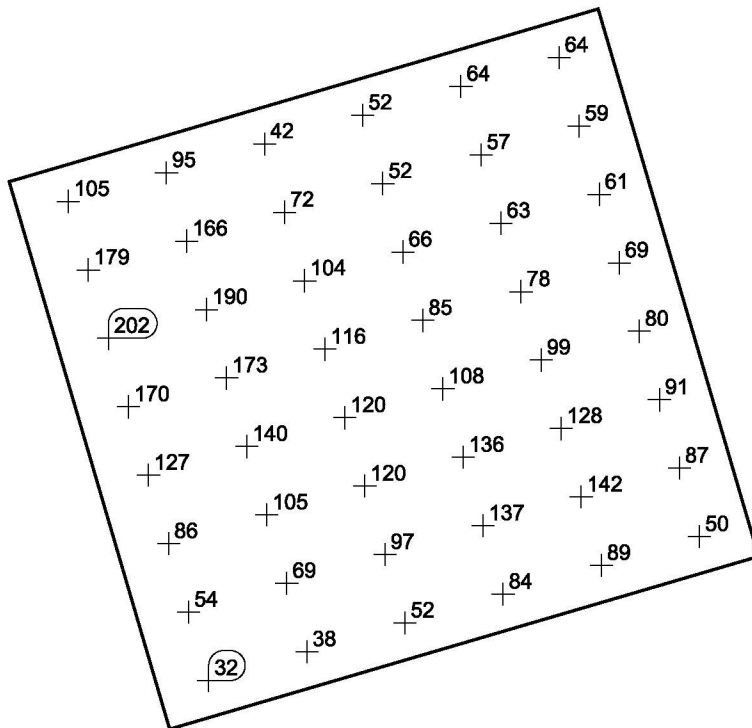
Høyde: 0.00 m

Isolinjer [lx]



Målestokk: 1 : 200

Verdiraster [lx]



Målestokk: 1 : 200

Verditabeller [lx]

m	-6.602	-4.716	-2.829	-0.943	0.943	2.829	4.716	6.602
6.766	64.3	59.3	61.1	68.6	79.6	91.2	86.7	50.5
4.060	63.9	57.2	62.9	77.7	99.2	128	142	89.3
1.353	51.7	52.4	65.5	84.7	108	136	137	83.9
-1.353	41.7	71.8	104	116	120	120	96.8	52.3
-4.060	95.3	166	140	173	140	105	69.0	38.1
-6.766	105	179	152	170	127	86.5	53.8	32.2