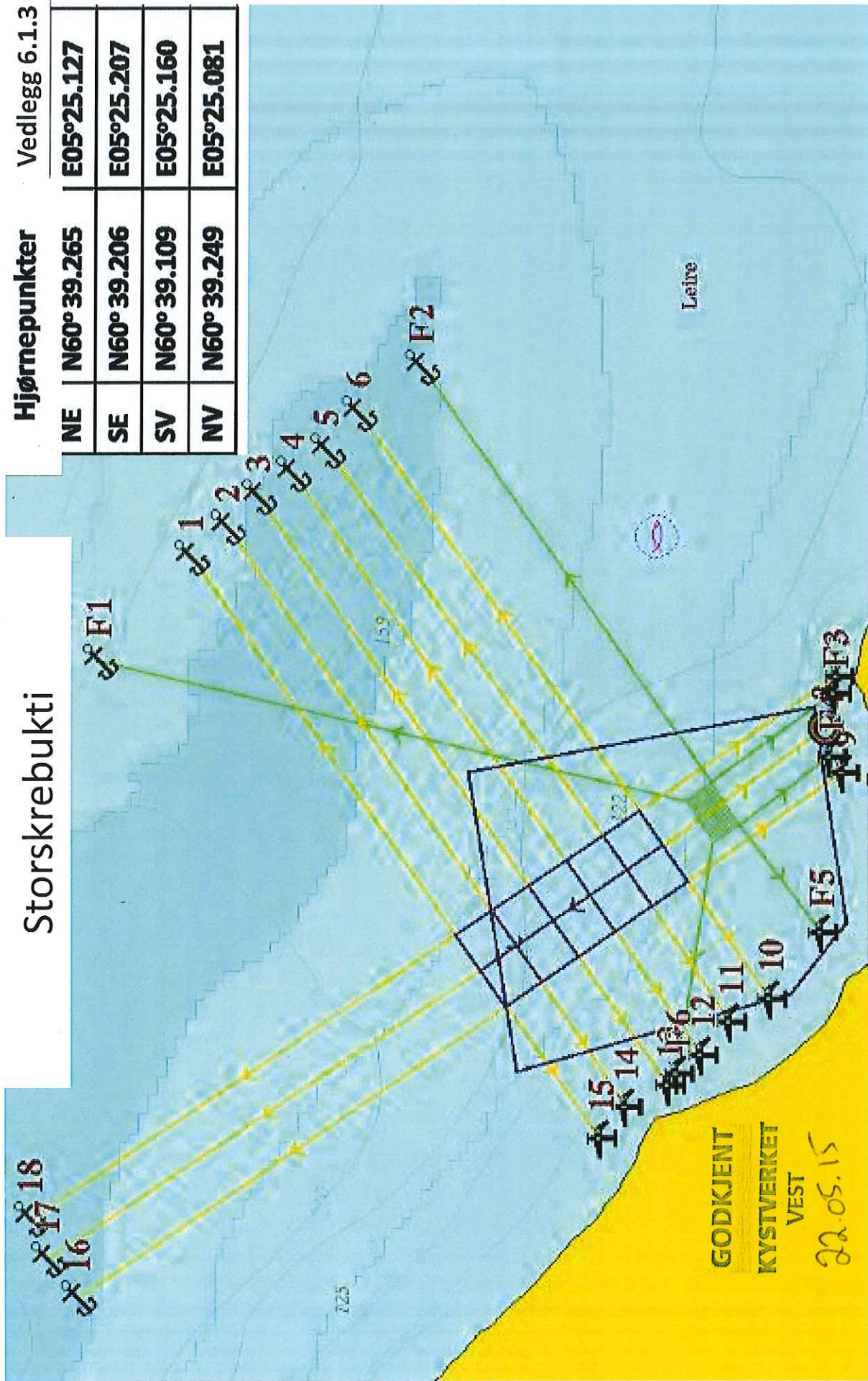


Storskrebukti

Hjørnepunkter

Vedlegg 6.1.3 d)

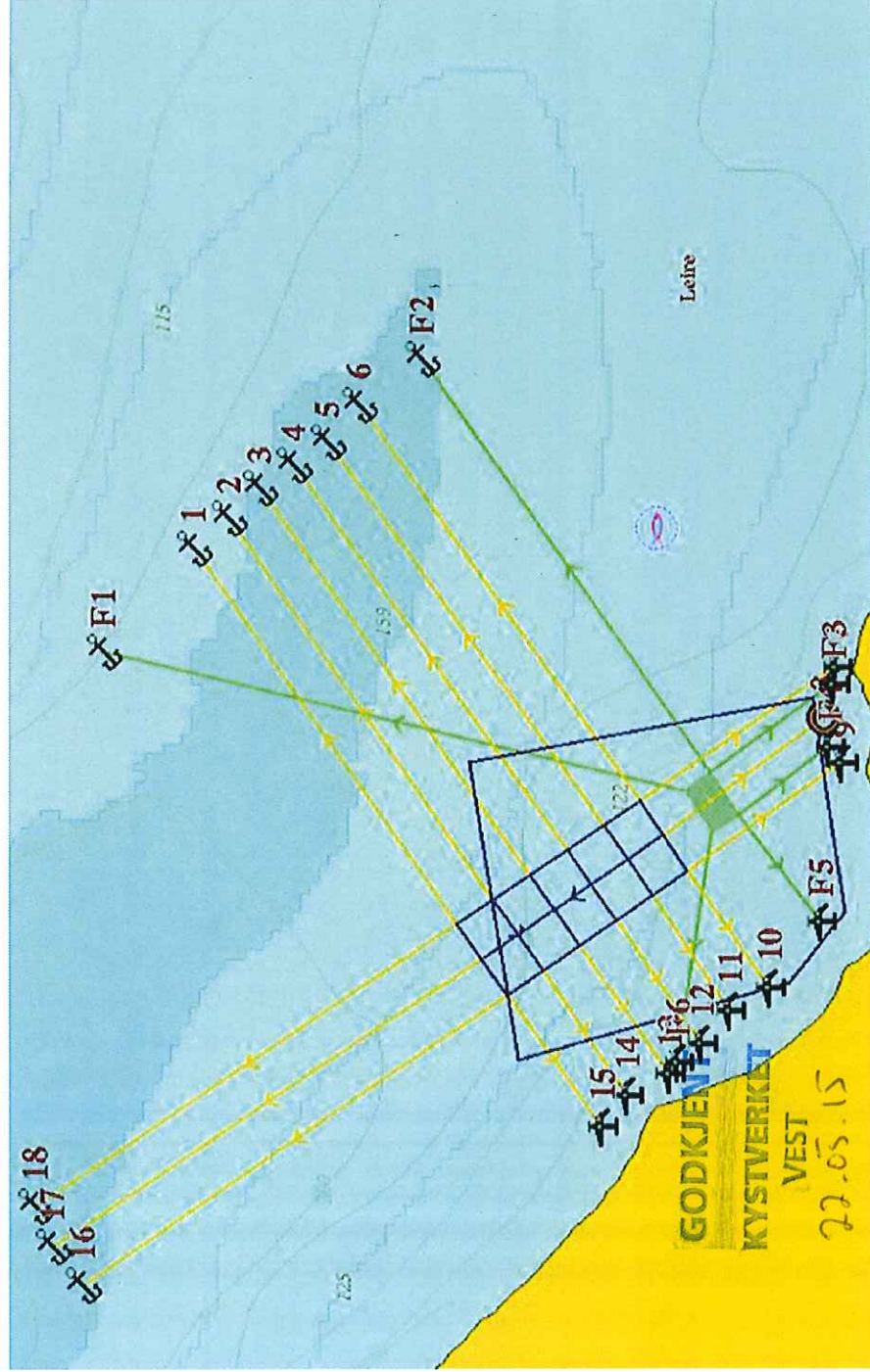
NE	N60° 39.265	E05°25.127
SE	N60° 39.206	E05°25.207
SV	N60° 39.109	E05°25.160
NV	N60° 39.249	E05°25.081



GODKJENT
KYSTVERKET
VEST
22.05.15

Vedlegg 6.1.3 d)

Storskrebukti posisjonar

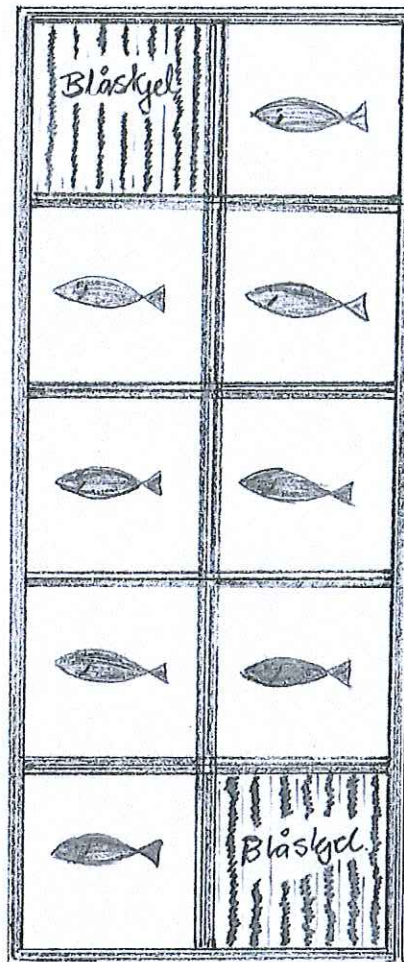


Nr.	Posisjon	Posisjon
1	N60°39.349	E5°25.370
2	N60°39.337	E5°25.389
3	N60°39.327	E5°25.409
4	N60°39.317	E5°25.424
5	N60°39.306	E5°25.439
6	N60°39.295	E5°25.463
7	N60°39.143	E5°25.294
8	N60°39.147	E5°25.261
9	N60°39.142	E5°25.232
10	N60°39.165	E5°25.086
11	N60°39.177	E5°25.071
12	N60°39.187	E5°25.050
13	N60°39.197	E5°25.031
14	N60°39.211	E5°25.017
15	N60°39.219	E5°24.996
16	N60°39.385	E5°24.893
17	N60°39.394	E5°24.919
18	N60°39.400	E5°24.945
F1	N60°39.378	E5°25.303
F2	N60°39.276	E5°25.492
F3	N60°39.144	E5°25.283
F4	N60°39.145	E5°25.242
F5	N60°39.148	E5°25.129
F6	N60°39.194	E5°25.038

Vedlegg 6.1.3 d2 Anleggskisse med blåskjell



Hovedstrøm-
retning.



GODKJENT
KYSTVERKET
VEST

22.05.15

Flåte