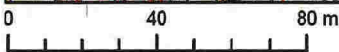
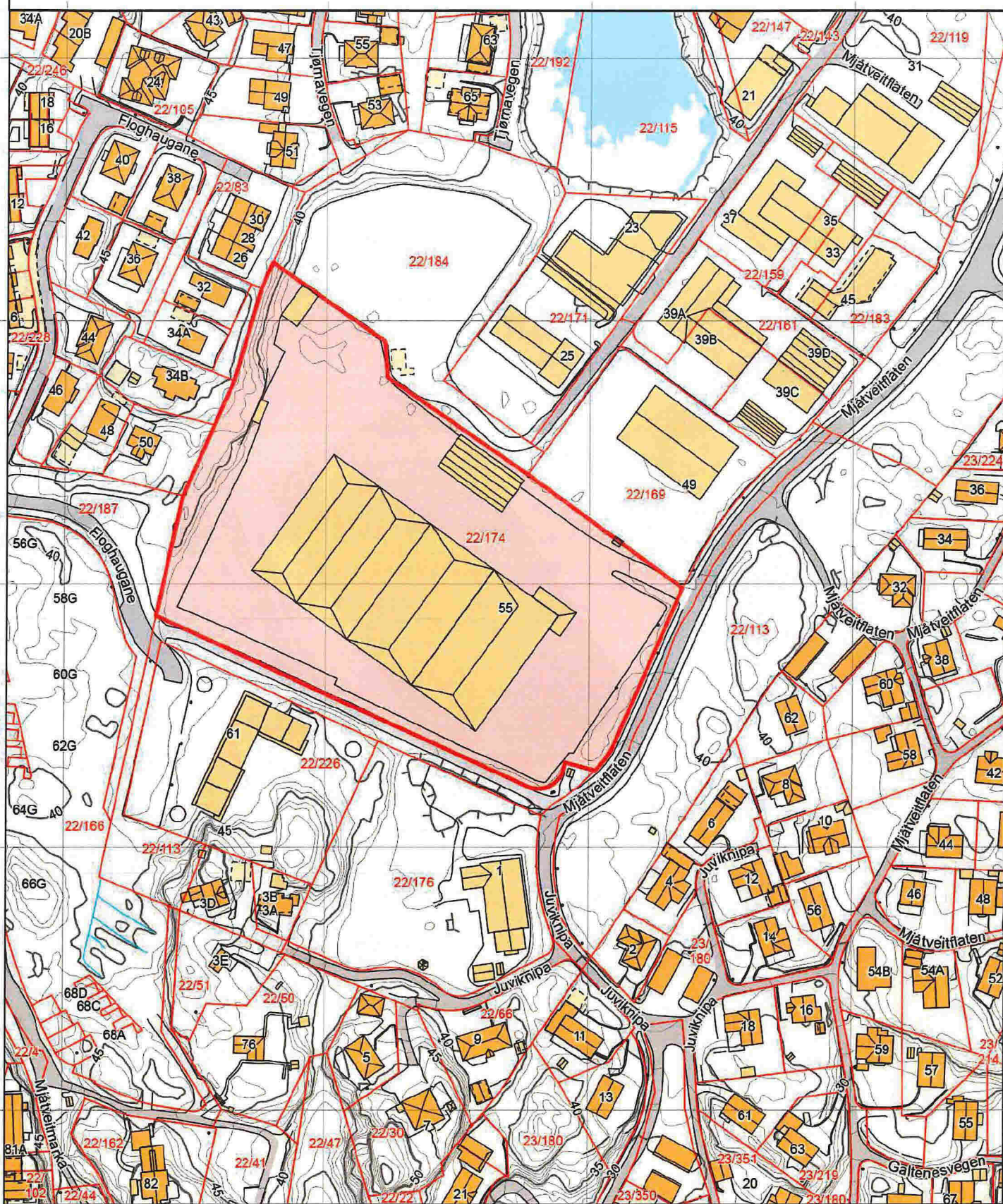


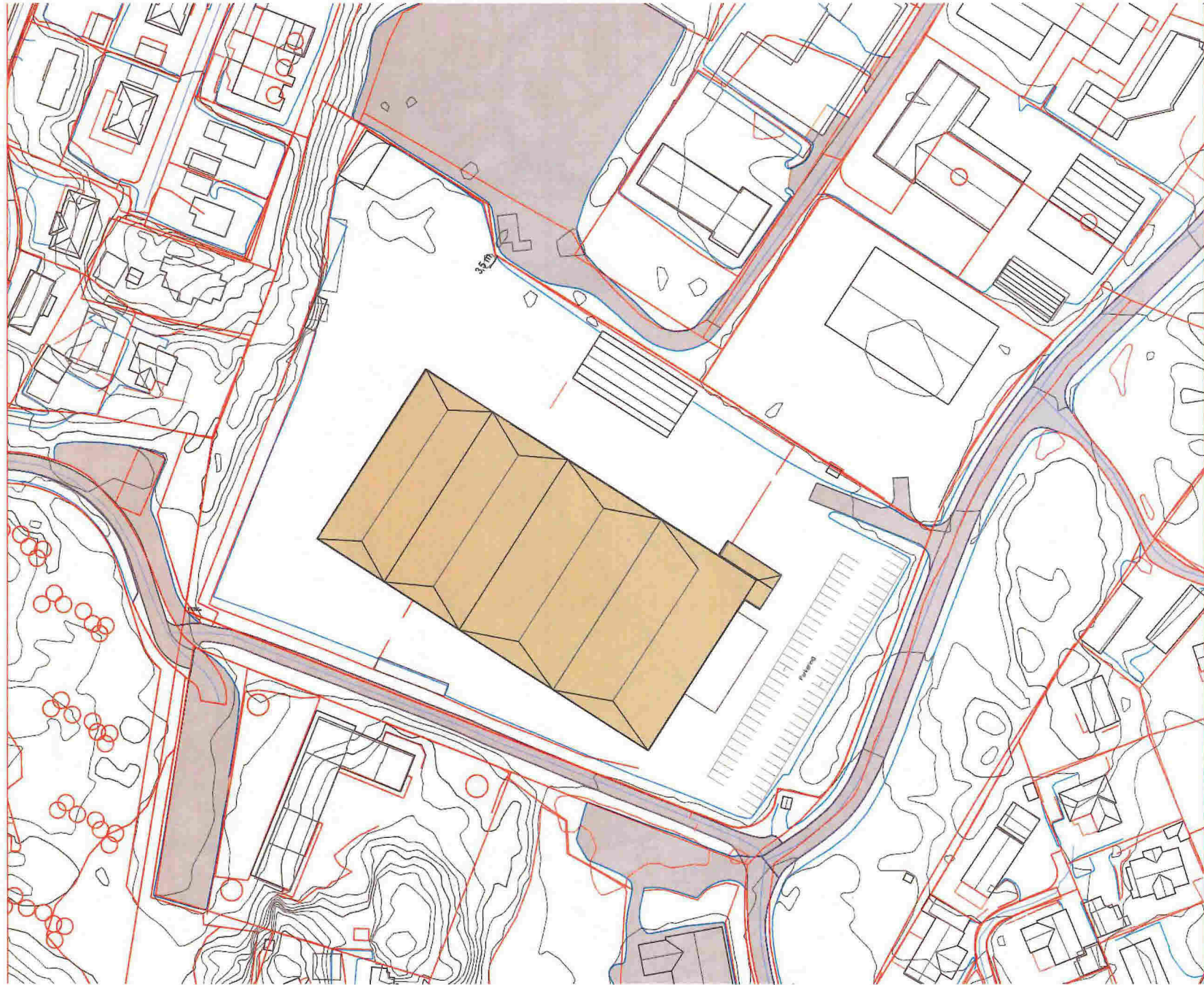


Kommune: 1256 Meland
Eiendom: 1256/22/174/0/0

Målestokk 1:2000
Dato: 22.6.2018

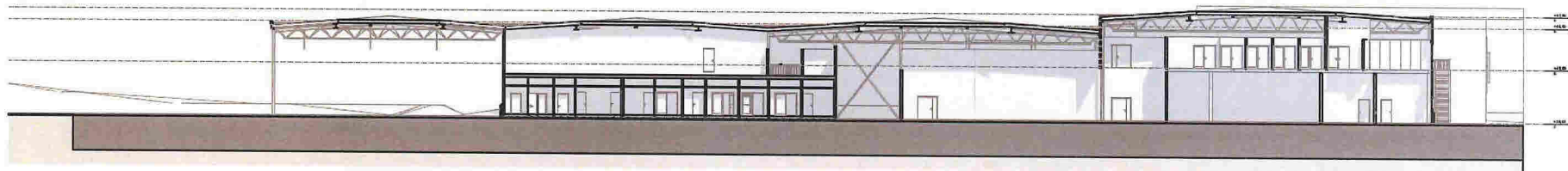


Kartgrunnlag: Geovekst - 8193
Det tas forbehold om feil og mangler i kartet.
Kartet kan ikke benyttes i byggesaksbehandling.

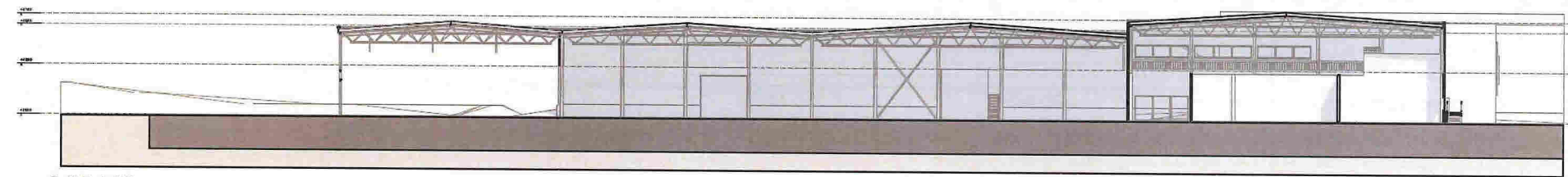


F:\pro 63001 - pro 63001\63153_Mjåtveitflaten 55\3-ARK-1\ARK03-4-AC-FILE\63153_Tilbygg_Mjåtveitflaten_S5.ppt

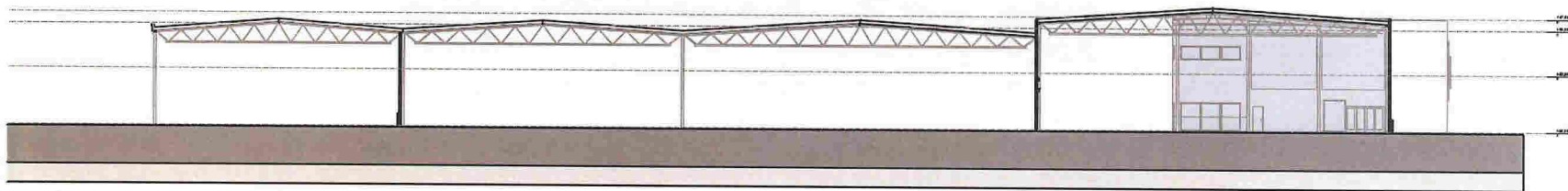
Printed 26.08.2018 av rnm253



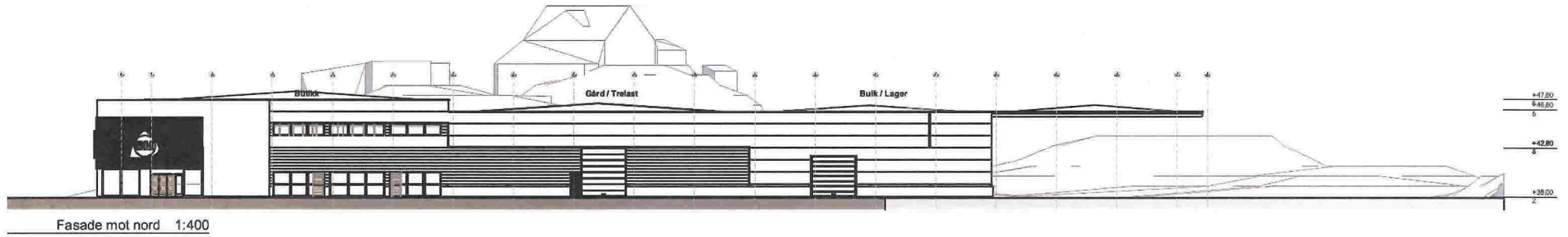
Snitt A 1:400



Snitt B 1:400



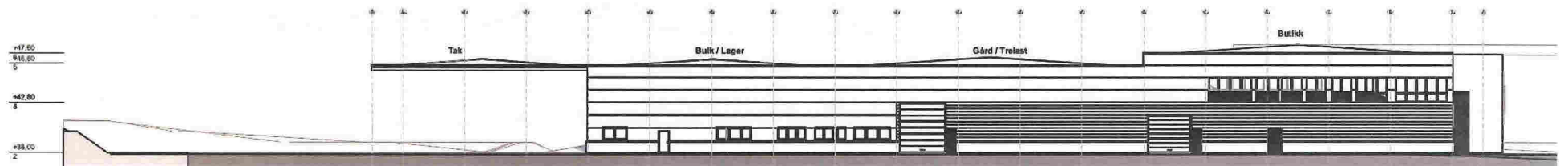
Snitt C 1:400



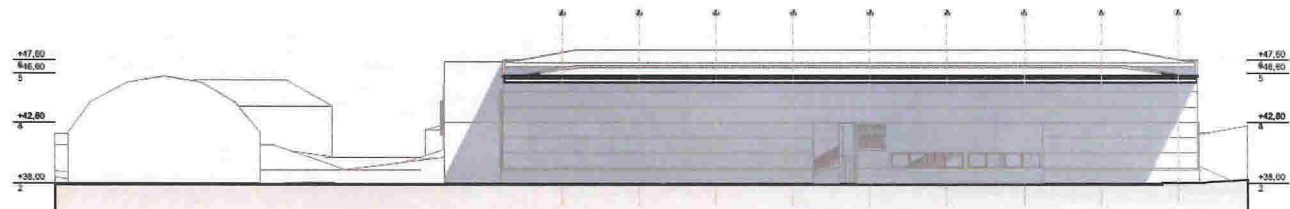
Fasade mot nord 1:400



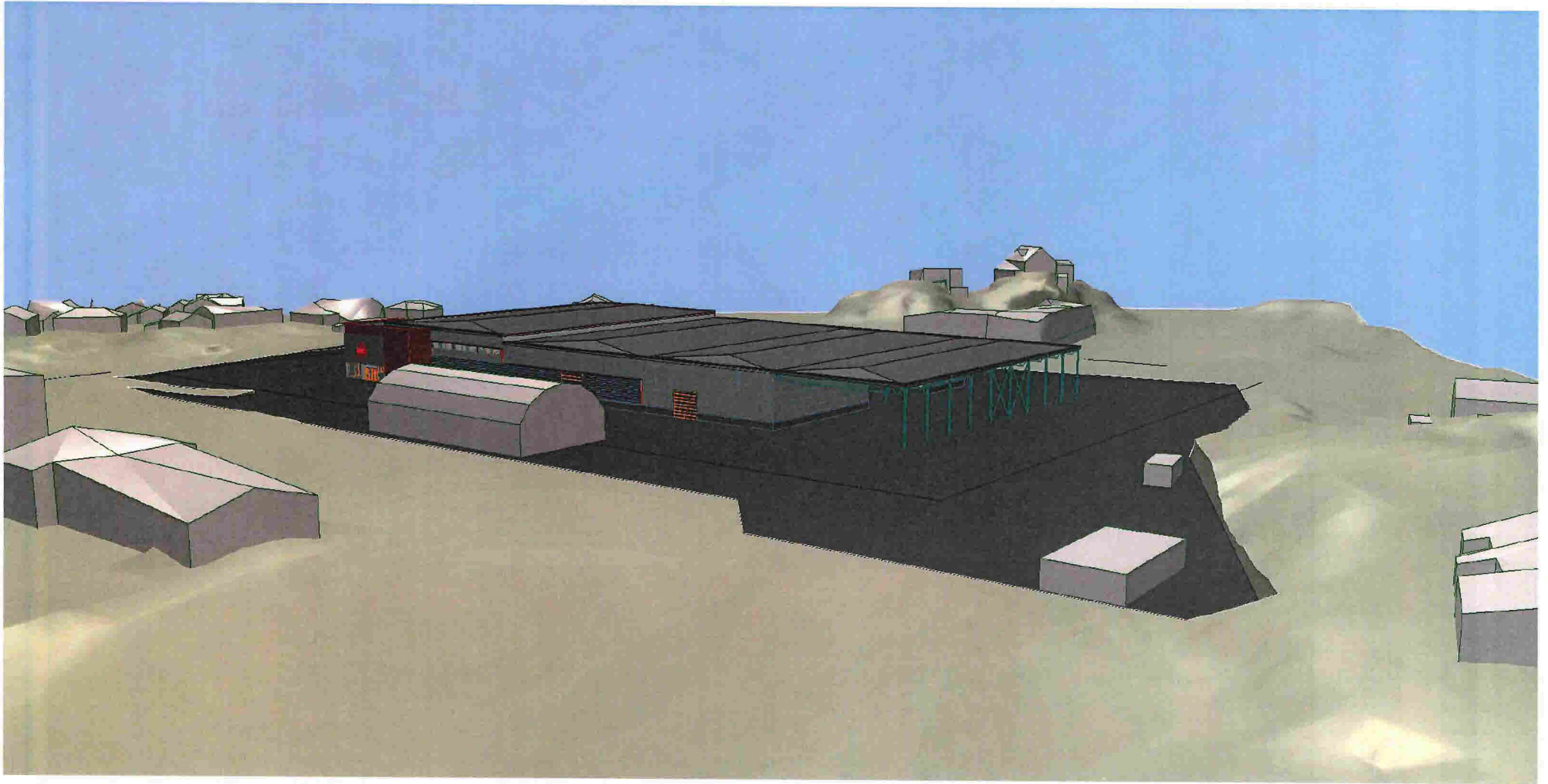
Fasade mot øst 1:400

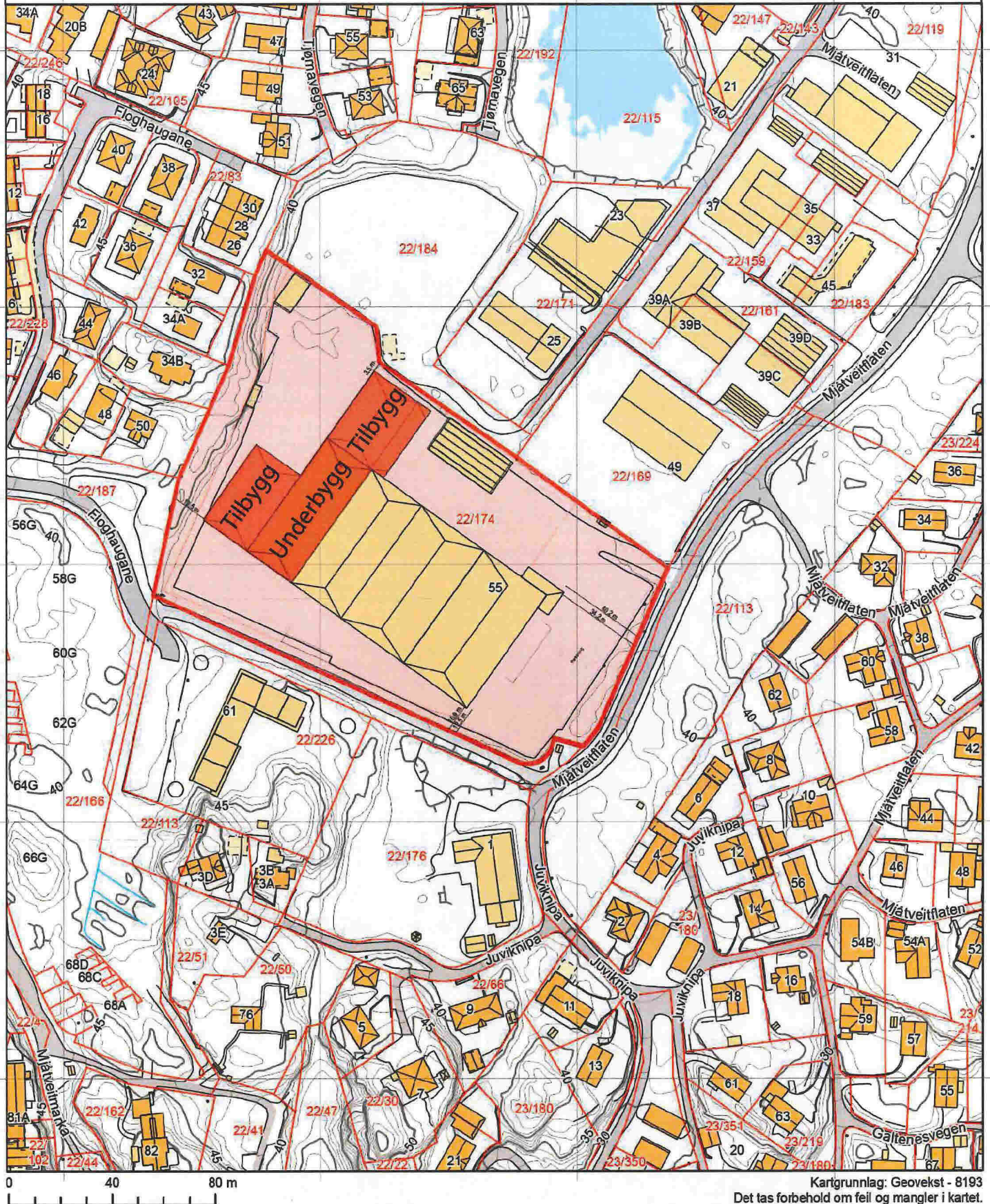


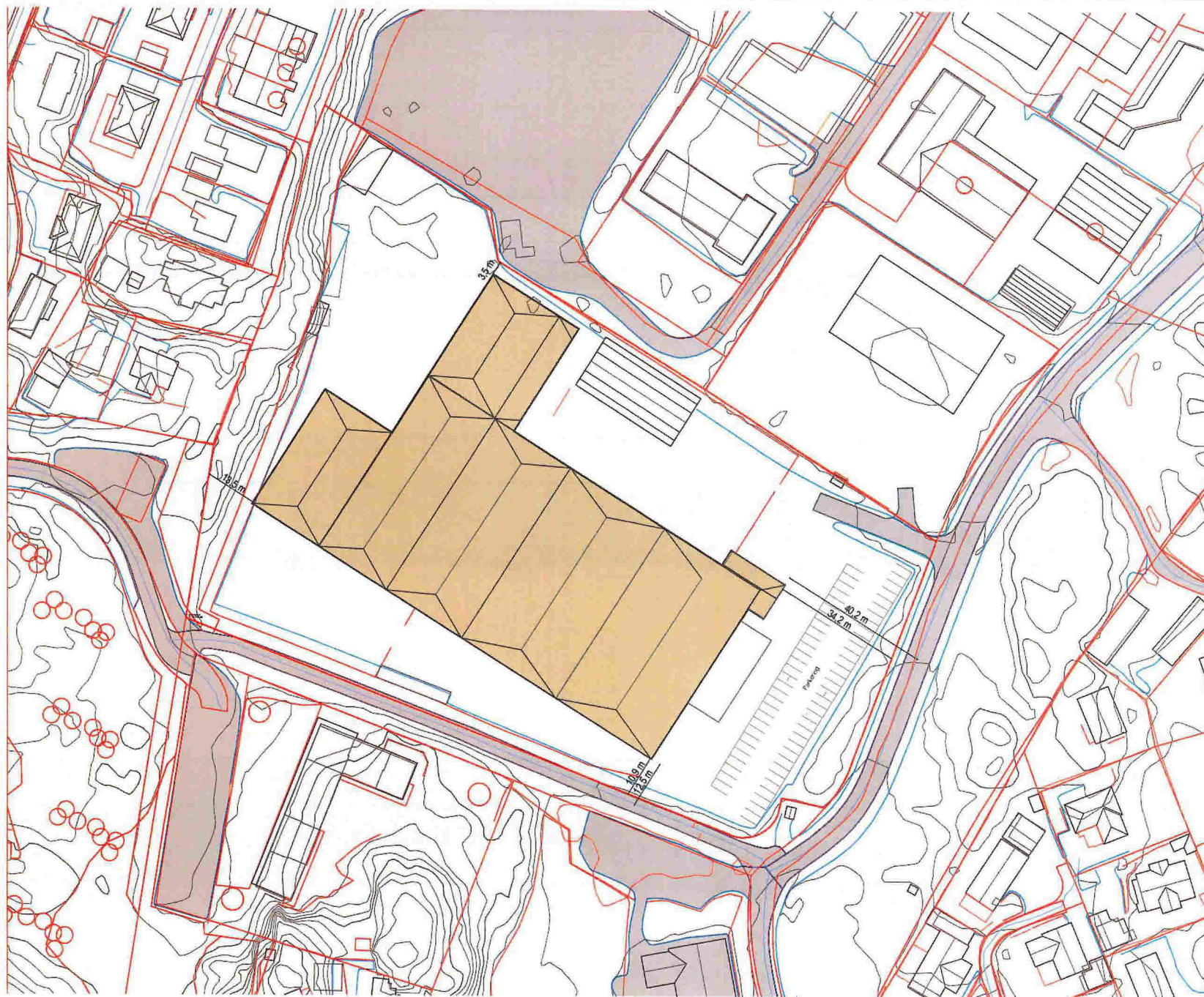
Fasade mot sør 1:400



Fasade mot vest 1:400

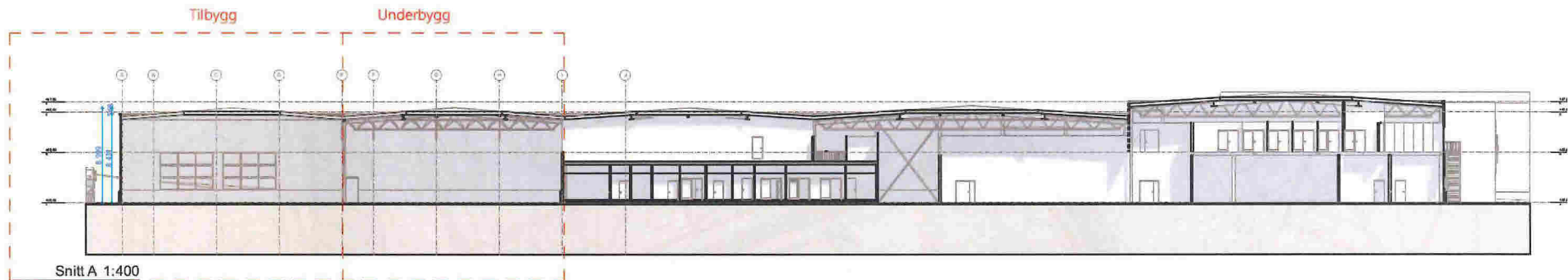




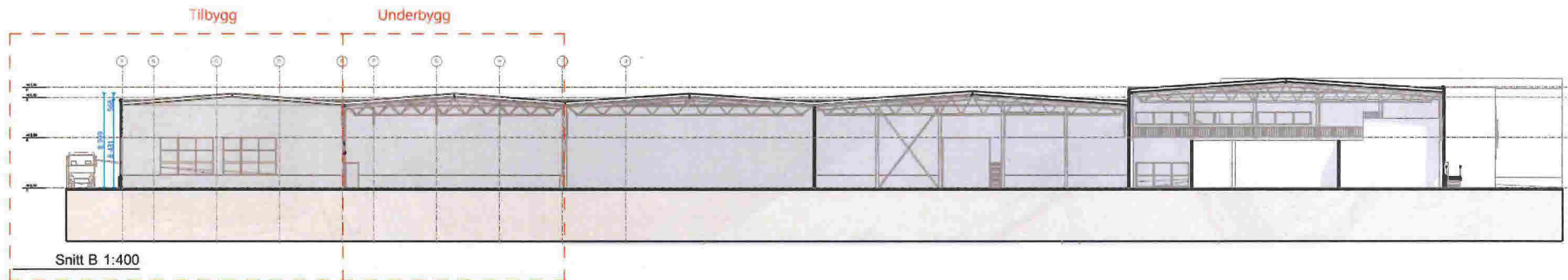


F:\pro 63001 - pro 635063153_Mjåtveitflaten 55\3 ARK - JAR\03-4 AC-FILEN\63153_Tilbygg_Mjåtveitflaten 55.dwg

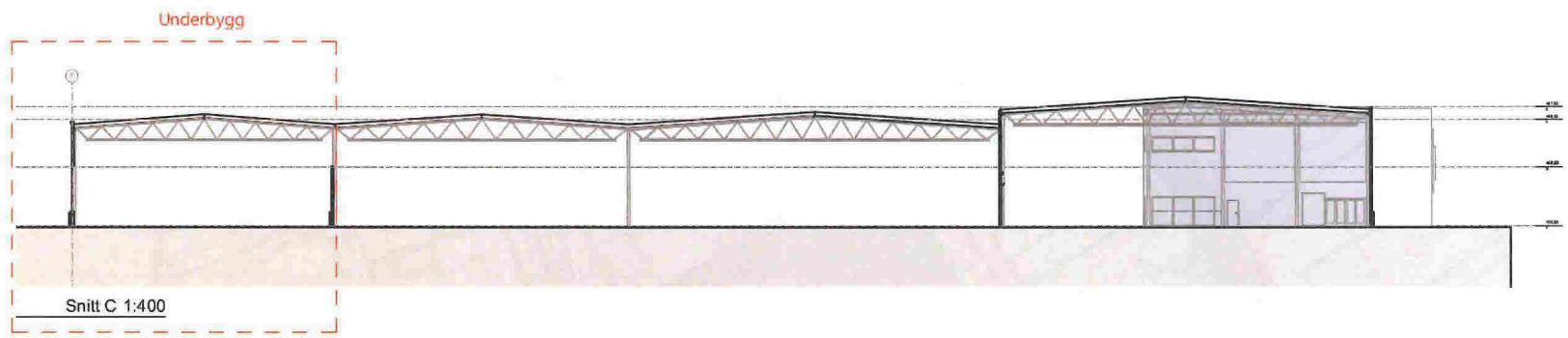
Printet 28.08.2018 av rmm253



Snitt A 1:400



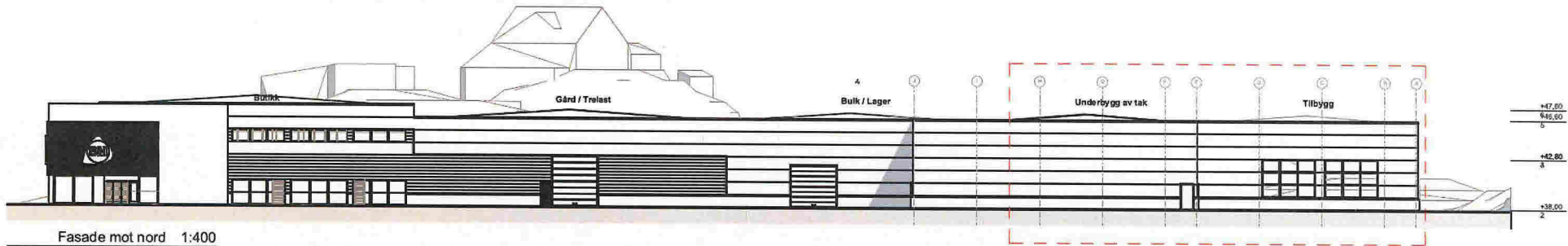
Snitt B 1:400



Snitt C 1:400

Figur 63001 - pro 6350063153_Mjåtteiflaten 553 ARK - IAR03-4 AC-FILERE3153_Tilbygg Mjåtteiflaten 553.pn

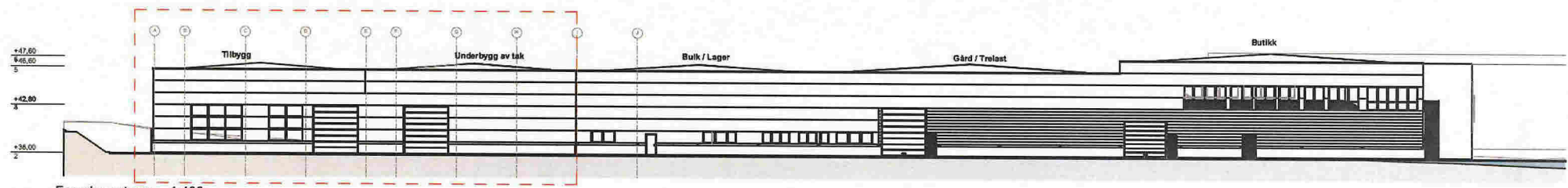
P1601 28.08.2018 av nm/53



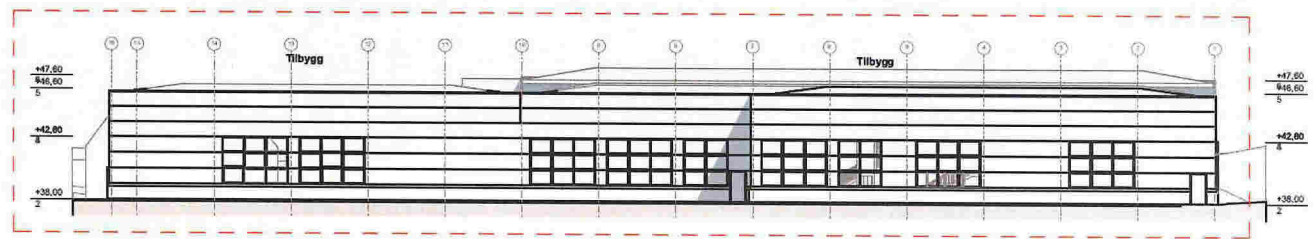
Fasade mot nord 1:400



Fasade mot øst 1:400



Fasade mot sør 1:400



Fasade mot vest 1:400

