

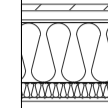
VEGGKODER

OBS. DET KAN FOREKOMME JUSTERING AV HIMLINGSHØYDER FOR PLASSERING AV VENTILASJONSSYSTEM

UTVENDIG

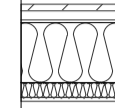
YV-01 SVART KLEDNING

| |
|------------------------------------|
| 22 mm Utvendig kledning - Liggende |
| 30 mm Luffing - Vertikalt |
| 9 mm Vindsperre |
| 198 mm Bindingsverk - Isolert |
| 1 mm Dampsperre |
| 48 mm Ulforing - Isolert |
| 13 mm Plåtekledning - Vegg |



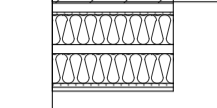
YV-02 BRUN KLEDNING

| |
|------------------------------------|
| 22 mm Utvendig kledning - Liggende |
| 30 mm Luffing - Vertikalt |
| 9 mm Vindsperre |
| 198 mm Bindingsverk - Isolert |
| 1 mm Dampsperre |
| 48 mm Ulforing - Isolert |
| 13 mm Plåtekledning - Vegg |



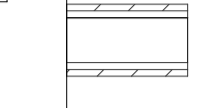
YV-04

| |
|------------------------------------|
| 22 mm Utvendig kledning - Liggende |
| 30 mm Luffing - Vertikalt |
| 9 mm Vindsperre |
| 198 mm Bindingsverk - Isolert |
| 1 mm Dampsperre |
| 48 mm Ulforing - Isolert |
| 13 mm Plåtekledning - Vegg |



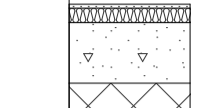
YV-05

| |
|------------------------------------|
| 22 mm Utvendig kledning - Liggende |
| 23 mm Luffing - Vertikalt |
| 0 mm Dampsperre |
| 148 mm Stenderverk tre - Usolert |
| 23 mm Luffing - Vertikalt |
| 22 mm Utvendig kledning - Liggende |



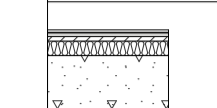
YV-06

| |
|--|
| 13 mm Gips |
| 48 mm Stenderverk tre - Isolert |
| 200 mm Betong |
| 150 mm Isolasjon - Ekspandert polystyren (EPS) |



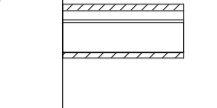
YV-07

| |
|--|
| 8 mm Flis - Vegg |
| 1 mm Lim |
| 1 mm Membran |
| 12 mm Våtromsplate |
| 15 mm Råpanel |
| 48 mm Stenderverk tre - Isolert |
| 200 mm Betong |
| 150 mm Isolasjon - Ekspandert polystyren (EPS) |



Dekkeforank

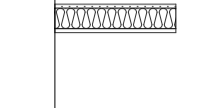
| |
|------------------------------|
| 22 mm Liggende kledning |
| 30 mm Luffing - Horisontalt |
| 98 mm Bindingsverk - Usolert |
| 1 mm Dampsperre |
| 18 mm Tre |



INNVEDIG

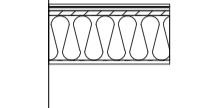
IV-01

| |
|---------------------------------|
| 13 mm Gipsplate - Vegg |
| 88 mm Stenderverk tre - Isolert |
| 13 mm Gipsplate - Vegg |



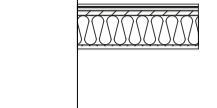
IV-02

| |
|---------------------------------|
| 8 mm Flis - Vegg |
| 1 mm Lim |
| 1 mm Membran |
| 12 mm Våtromsplate |
| 15 mm Råpanel |
| 48 mm Stenderverk tre - Isolert |
| 13 mm Gipsplate - Vegg |



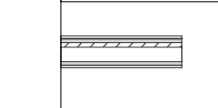
IV-03

| |
|---------------------------------|
| 13 mm Gipsplate - Vegg |
| 88 mm Stenderverk tre - Isolert |
| 13 mm Gipsplate - Vegg |



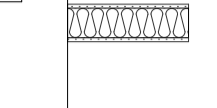
IV-04

| |
|---------------------------------|
| 8 mm Flis - Vegg |
| 12 mm Våtromsplate |
| 48 mm Stenderverk tre - Isolert |
| 13 mm Gipsplate - Vegg |



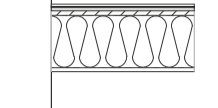
IV-07

| |
|---------------------------------|
| 13 mm Gipsplate - Vegg |
| 88 mm Stenderverk tre - Isolert |
| 13 mm Gipsplate - Vegg |



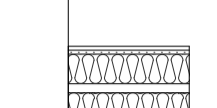
IV-13

| |
|----------------------------------|
| 8 mm Flis - Vegg |
| 1 mm Lim |
| 1 mm Membran |
| 12 mm Våtromsplate |
| 15 mm Råpanel |
| 173 mm Stenderverk tre - Isolert |
| 13 mm Gipsplate - Vegg |



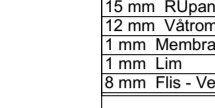
IV-Skille

| |
|------------------------|
| 13 mm Gipsplate - Vegg |
| 1 mm Lim |
| 1 mm Membran |
| 13 mm Gipsplate - Vegg |



IV-Skille2

| |
|-----------------------------|
| 8 mm Flis - Vegg |
| 1 mm Lim |
| 1 mm Membran |
| 12 mm Våtromsplate |
| 15 mm Råpanel |
| 48 mm Lekt |
| 30 mm Råpanel |
| 15 mm Luffing - Horisontalt |
| 12 mm Våtromsplate |
| 1 mm Lim |
| 1 mm Membran |
| 8 mm Flis - Vegg |



IV-Skille Bad

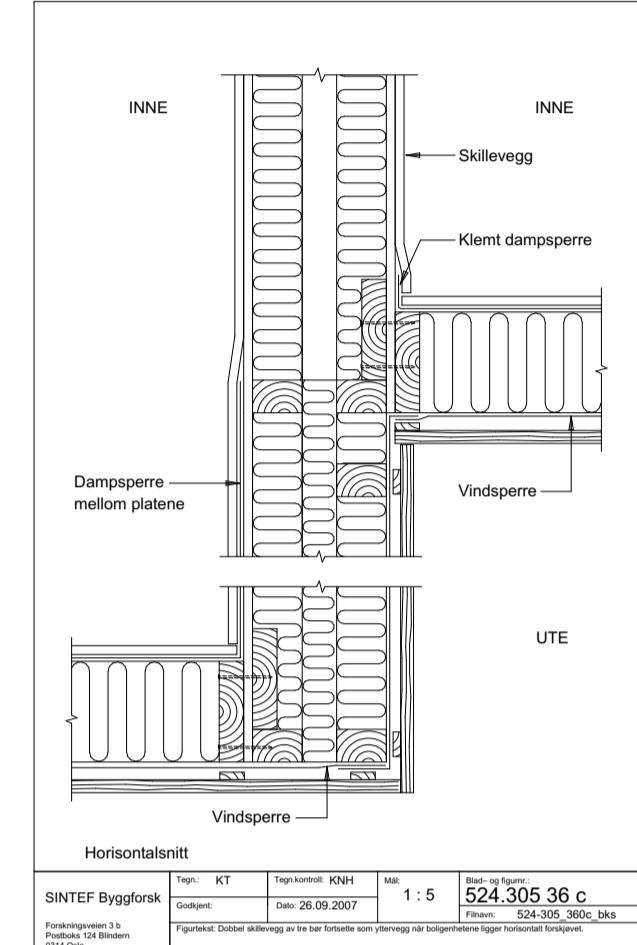
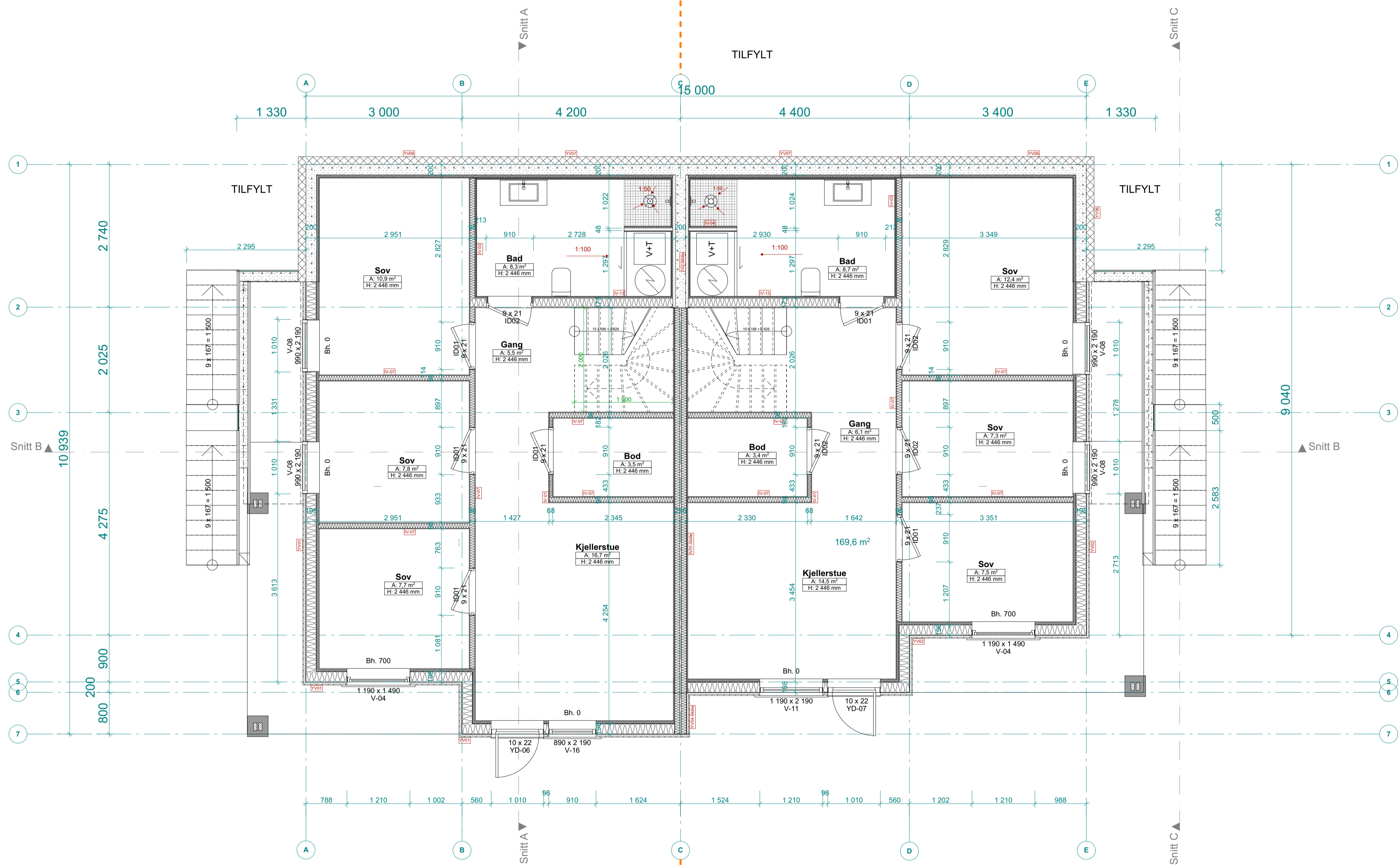
| |
|-----------------------------|
| 8 mm Flis - Vegg |
| 1 mm Lim |
| 1 mm Membran |
| 12 mm Våtromsplate |
| 15 mm Råpanel |
| 48 mm Lekt |
| 30 mm Råpanel |
| 15 mm Luffing - Horisontalt |
| 12 mm Våtromsplate |
| 1 mm Lim |
| 1 mm Membran |
| 8 mm Flis - Vegg |



obs.Rupanel for veggfeste på bad

svart hus

brunt hus



byggeforskdetalj:
Byggedetalj 524.305.Fig.36c
Dobbel skillevegg av tre bør fortsette som yttervegg når boligenhetene ligger horisontalt forskjøvet.

Hus - svart kledning
BRA= 67,7 m²
BYA= 85,7 m²
P-BYA= 27,0 m²

1.ETG
Fasade 3 Δ

Hus - naturbrun kledning
BRA= 67,2 m²
BYA= 84,5 m²
P-BYA= 27,0 m²

Type tegning:
Plan 1. Etasje_BK18-20

Fase:
Arbeidstegning

Prosjektering av:
ARK: TYARK



Strandgaten 19
tel. 97 43 94 70

Tittel:
ELVAÅSEN Meland
Tiltakshaver
Boligbygg Vest as

Kontroll prosjekt
Sign.: OZ Kontroll: TT
Filnavn: BK18-20_Hus 39-46_Arb.tegning.pln

Målestokk: A1

Dato: 20.02.19

Prosjektnr.: 1518
Type tegning: Plan 1. Etasje_BK18-20

Tegningsnr.: A22-101

Revisjons nr: