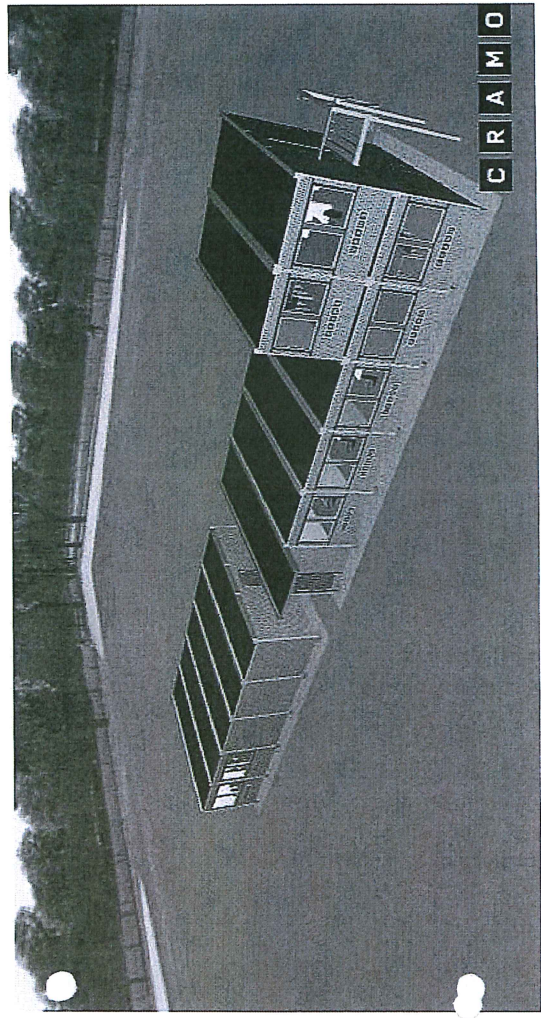


MEIAND KOMMUNE

Gjodteke 5-1-15

Saksnr. 14/2797

Sakshandsamar e.f. TSE

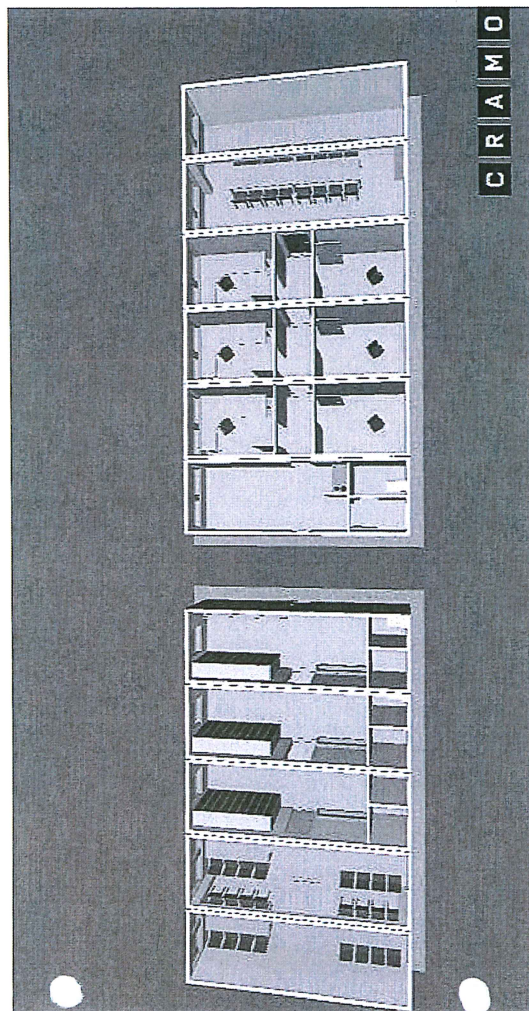


MELAND KOMMUNE

Godteke 5-1-15

Saksnr. 14/3797

Sakshandsamar e.f. TSE

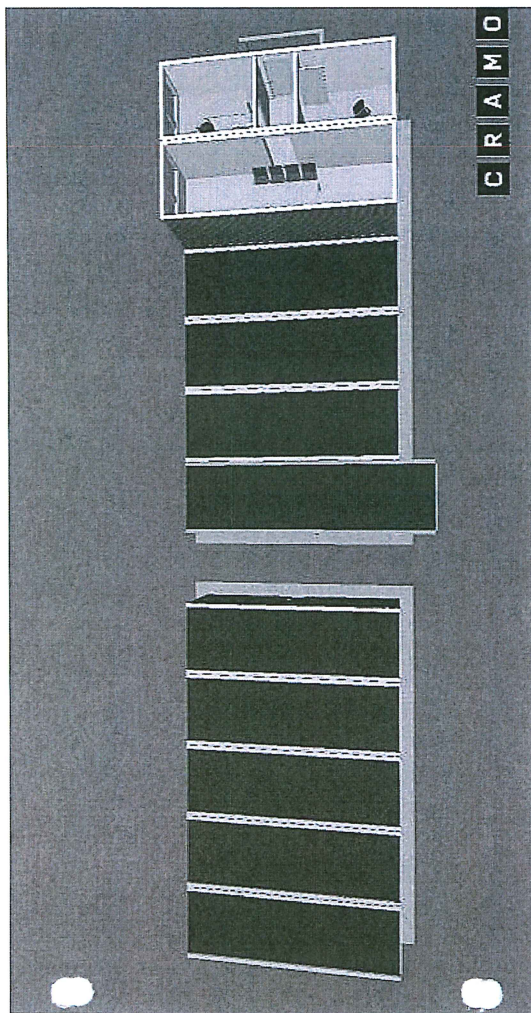


MELAND KOMMUNE

Grodtanke 5-1-15

Saksnr. 14/3797

Sakshandsamar e.f. TJS

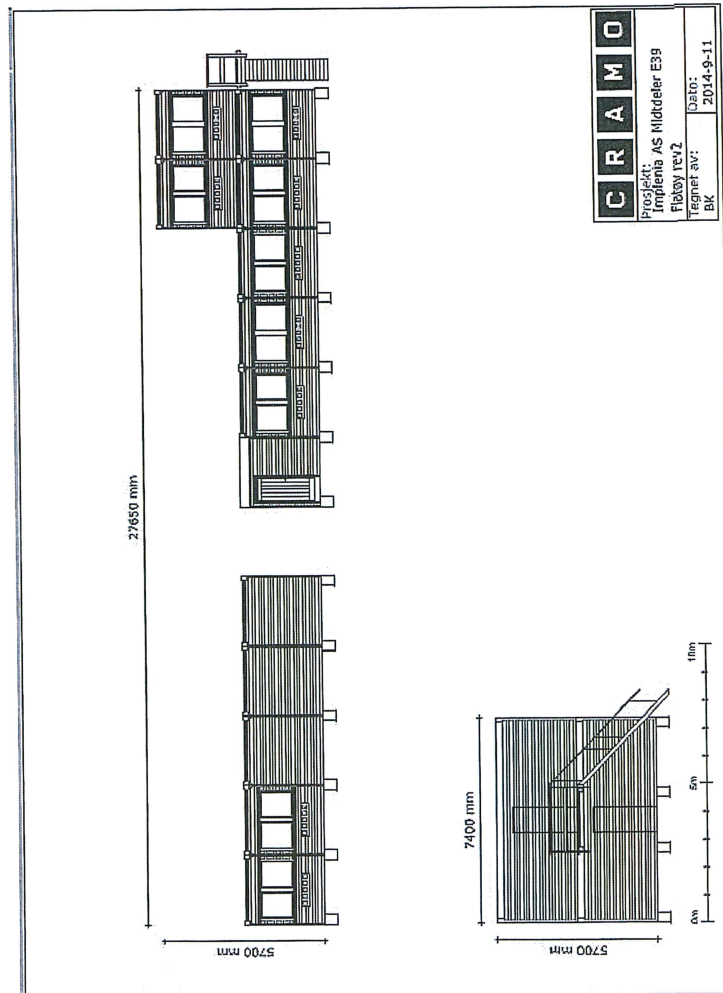


MELAND KOMMUNE

Prosjekt: S-1-15

Saksnr. 14/3747

Sakshandsamar e.f. TSk

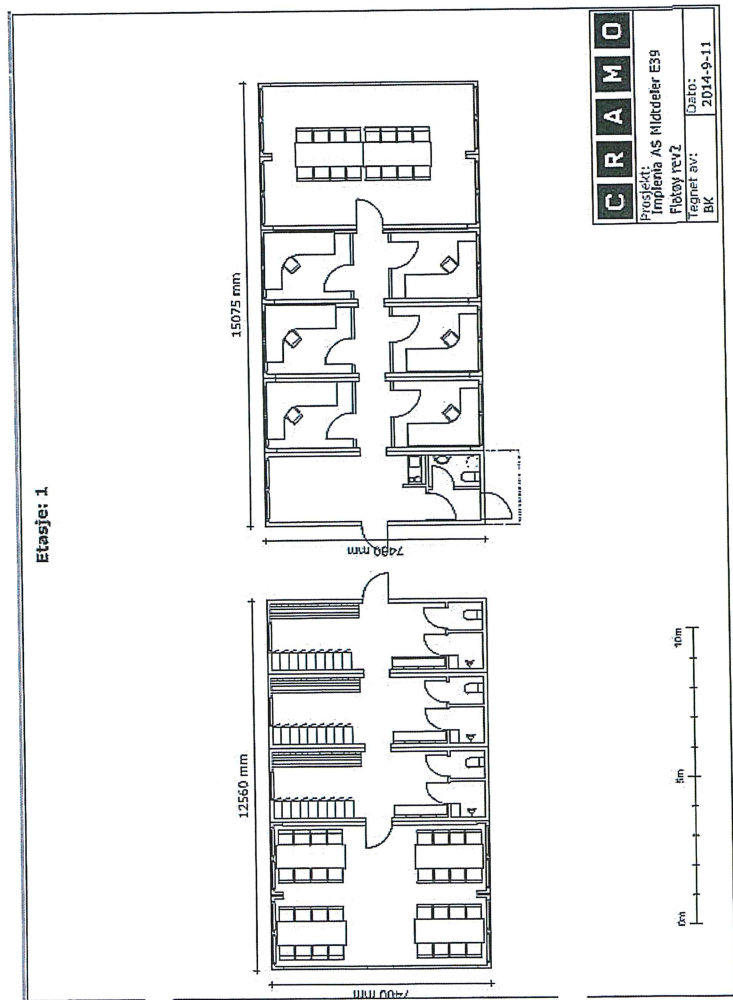


MELAND KOMMUNE

Godteke 5-1-15

Saksnr. 14/3797

Sakshandsamar e.f. TJ



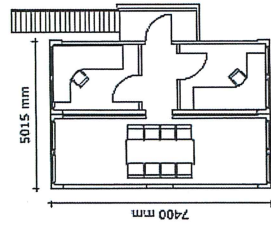
MELAND KOMMUNE

Godtcekk 49/5-1-15

Saksnr. 17/3797

Sakshandsamar e.f. TSE

Etasje: 2



C	R	A	M	O
Prosjekt: Implanta AS Midtdeleer E39				
Fase: 100% TSV'2				
Tegnet av: BK			Dato: 2014-9-11	