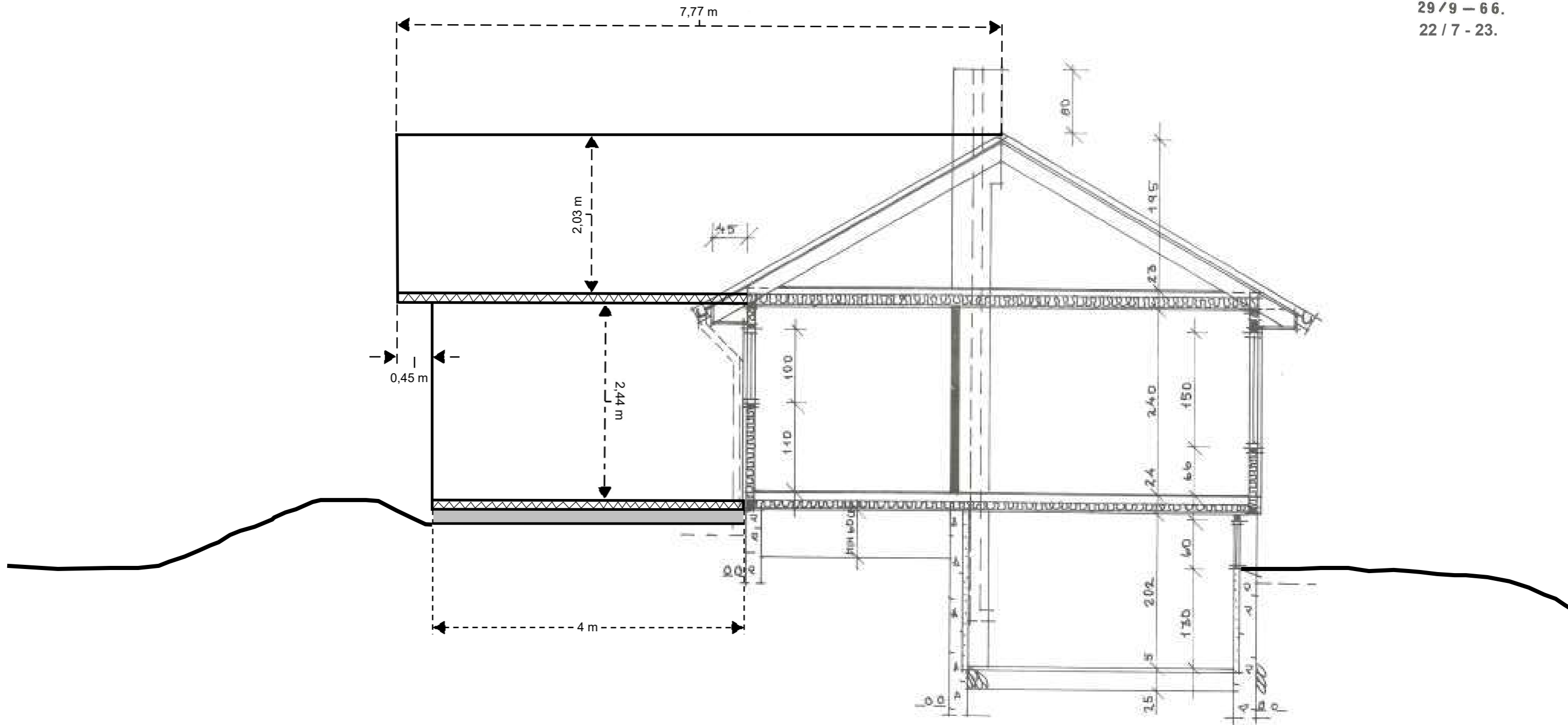


KARL RØDLAND'S  
TYPE NR. 103  
M. 1:50

29/9 - 66.

22/7 - 23.



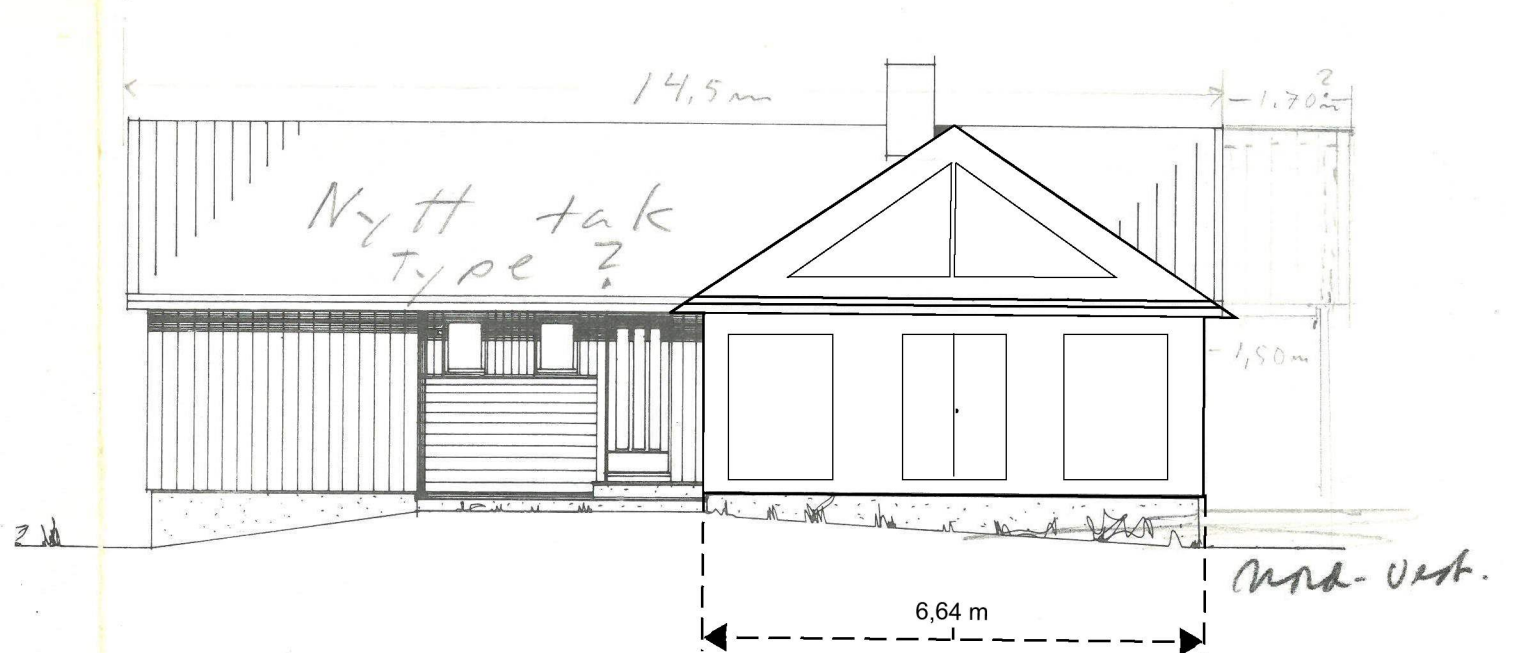
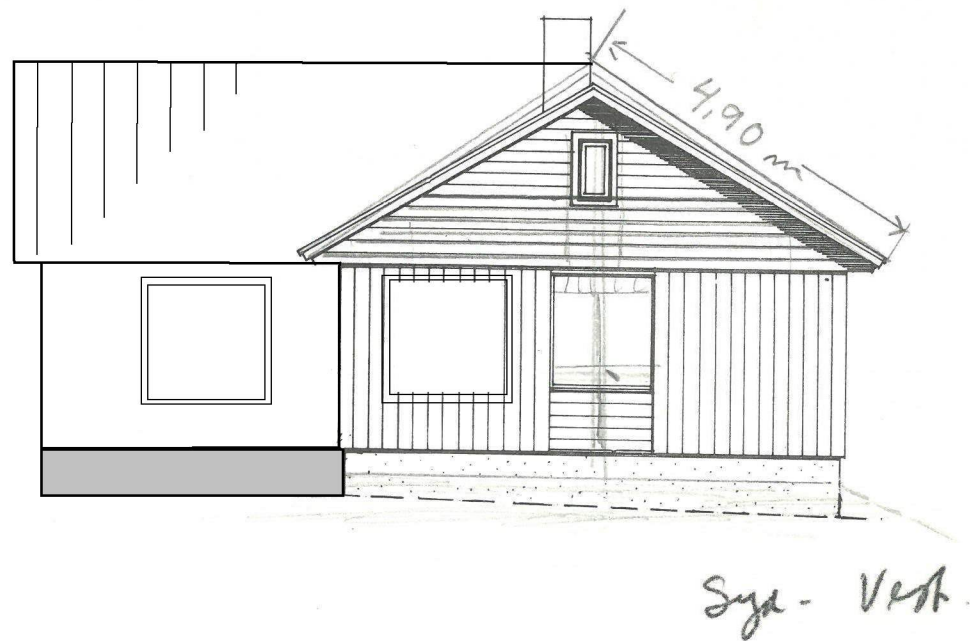
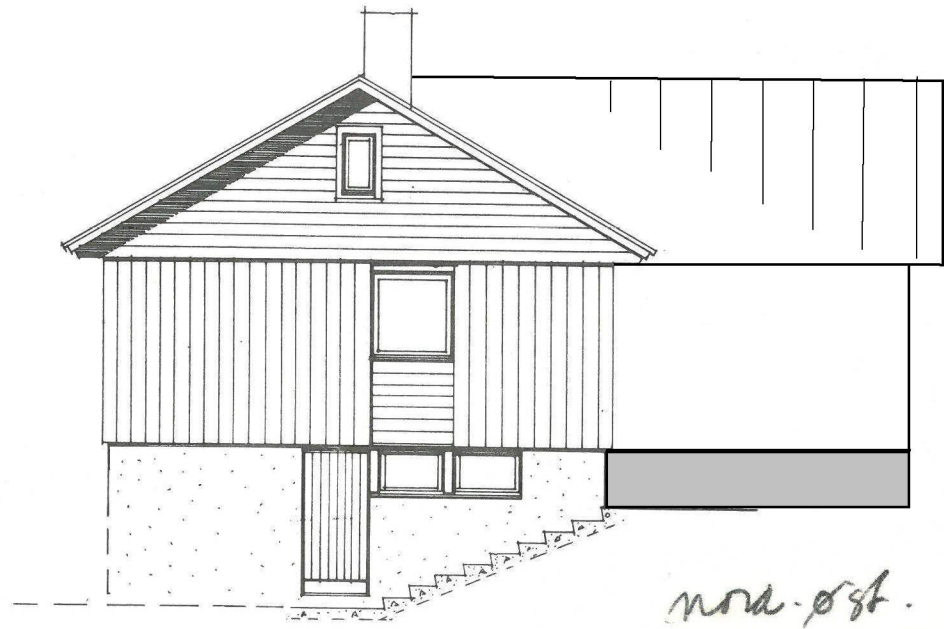
SNITT A-A

FASADER

KARL RØDLAND's  
TYPE NR. 103 +  
M. 1:100

29/9 - 66.

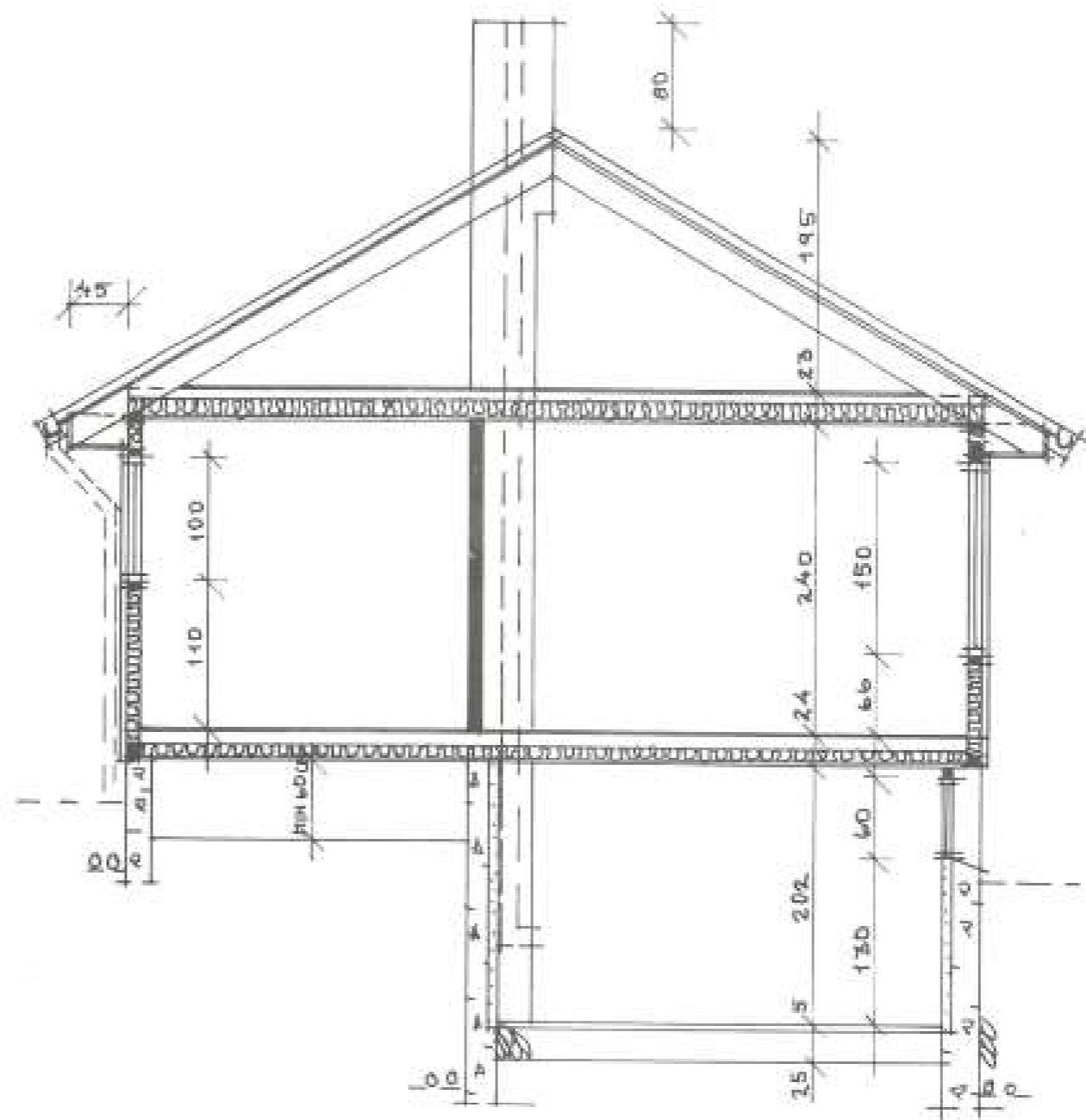
22/7 - 23.



heif Myrdal's nybygg  
pi Vals bruants fossen  
Bergen 16/8 - 68  
Karl Rødland

KARL RØDLAND's  
TYPE NR. 103  
M. 1:50

29/9 - 66.

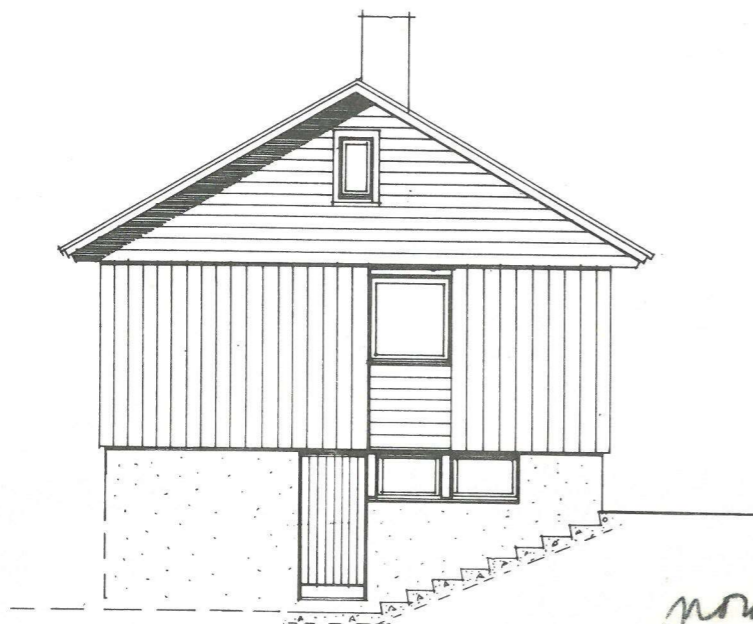


SNITT A-A

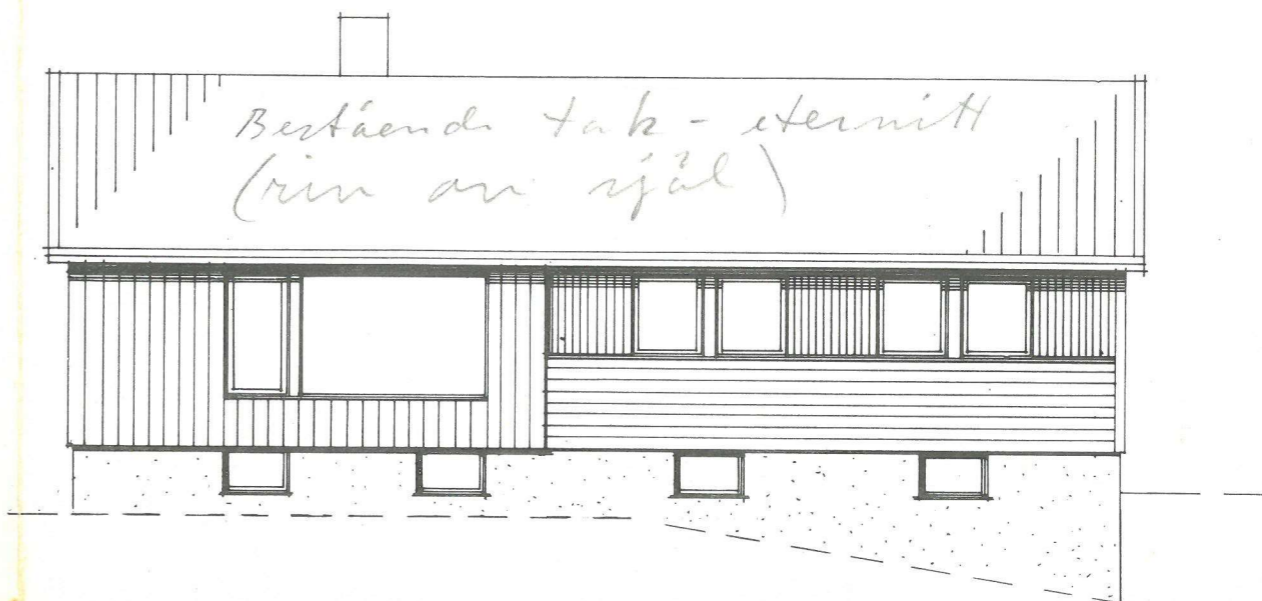
FASADER

KARL RØDLAND'S  
TYPE NR. 103 +  
M. 1:50

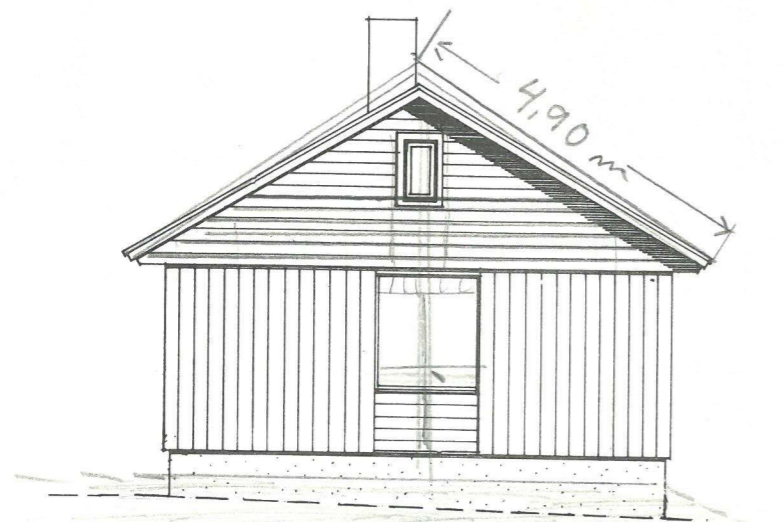
29/9 - 66.



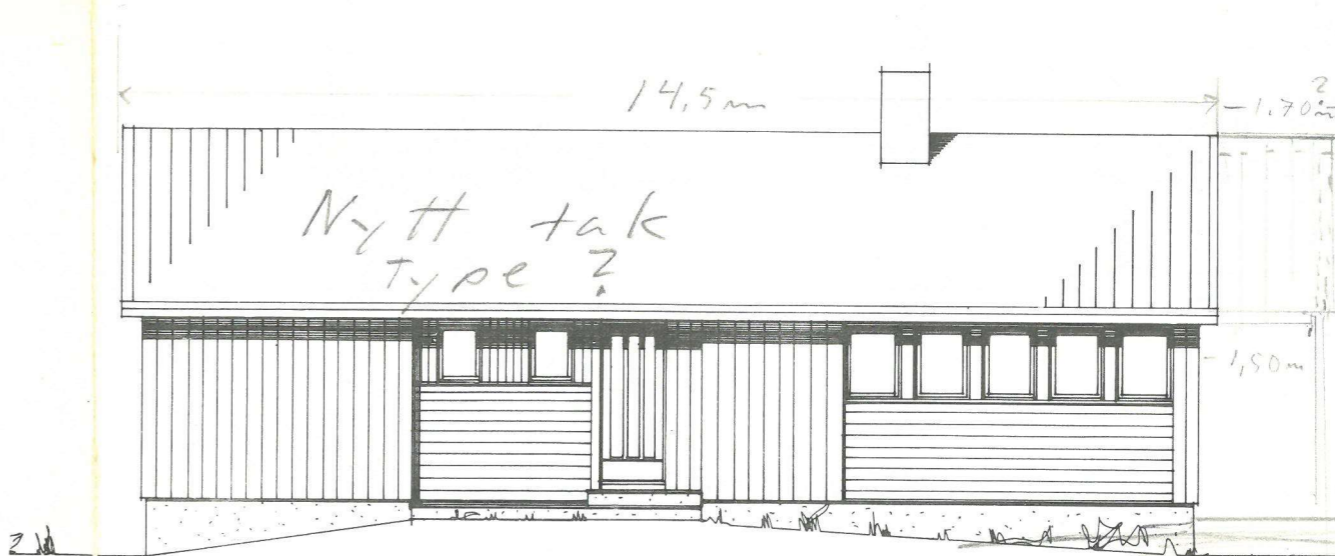
nrn. øst.



Syd. øst.



Syd. Vest.



nrn. Vest.

heft Nyele's nybygger  
på Vals brændes forsen  
Bergen 1968 - 68  
Karl Rødland